

## Product datasheet for RC221283

### CCR2 (NM\_000648) Human Tagged ORF Clone

#### Product data:

Product Type:	Expression Plasmids
Product Name:	CCR2 (NM_000648) Human Tagged ORF Clone
Tag:	Myc-DDK
Symbol:	CCR2
Synonyms:	CC-CKR-2; CCR2A; CCR2B; CD192; CKR2; CKR2A; CKR2B; CMKBR2; MCP-1-R
Mammalian Cell Selection:	Neomycin
Vector:	pCMV6-Entry (PS100001)
E. coli Selection:	Kanamycin (25 ug/mL)
ORF Nucleotide Sequence:	>RC221283 representing NM_000648 Red=Cloning site Blue=ORF Green=Tags(s)

TTTTGTAATACGACTCACTATAGGGCGGCCGGAATTCGTCGACTGGATCCGGTACCGAGGAGATCTGCC  
GCC**CGATCGCC**

ATGCTGTCCACATCTCGTTCTCGGTTTATCAGAAATACCAACGAGAGCGGTGAAGAAGTCACCACCTTTT  
TTGATTATGATTACGGTGTCCCTGTCTATAAATTTGACGTGAAGCAAATGGGGCCCACTCCTGCCTCC  
GCTCTACTCGTGGTGTTCATCTTTGGTTTTGTGGCAACATGCTGGTCATCCTCATCTTAATAAAGTGC  
AAAAAGCTGAAGTCTTGACTGACATTTACCTGCTCAACCTGGCCATCTCTGATCTGCTTTTTCTTATTA  
CTCTCCATTGTGGGCTCACTCTGCTGCAAATGAGTGGTCTTTGGGAATGCAATGTGCAAATTATTCAC  
AGGGCTGTATCAGATCGTTATTTGGCGAATCTTCTCATCATCCTCCTGACAATCGATAGATACCTG  
GCTATTGTCCATGCTGTGTTTGCTTTAAAAGCCAGGACGGTACCTTTGGGGTGGTGACAAGTGTATCA  
CCTGGTTGGTGGCTGTGTTGCTTCTGTCCCAGGAATCATCTTTACTAAATGCCAGAAAGAAGATTCTGT  
TTATGTCTGTGGCCCTTATTTCCACGAGGATGGAATAATTTCCACACAATAATGAGGAACATTTGGGG  
CTGGTCTGCCGCTGCTCATCATGGTCATCTGCTACTCGGAATCCTGAAAACCTGCTTCGGTGTGCAA  
ACGAGAAGAAGAGGCATAGGGCAGTGAGAGTCATCTTACCATCATGATTGTTTACTTTCTTCTTCTGGAC  
TCCCTATAATATTGTCATTCTCCTGAACACCTTCCAGGAATCTTCGGCCTGAGTAACTGTGAAAGCACC  
AGTCAACTGGACCAAGCCAGCAGGTGACAGAGACTCTTGGGATGACTCACTGTCATCAATCCCATCA  
TCTATGCCTTCGTTGGGAGAAGTTCAGAAGGTATCTCTCGGTGTTCTTCGAAAAGCACATCACCAGCG  
CTTCTGAAACAATGTCCAGTTTCTACAGGGAGACAGTGGATGGAGTCAACAAACACGCCTTCC  
ACTGGGAGCAGGAAGTCTCGGCTGTTTA

**ACGCGT**ACGCGGCCGCTCGAGCAGAAACTCATCTCAGAAGAGGATCTGGCAGCAAATGATATCCTGGATT  
ACAAGGATGACGACGATAAGGTTAA



[View online »](#)

**Protein Sequence:** >RC221283 representing NM\_000648  
Red=Cloning site Green=Tags(s)

MLSTSRSRFIRNTNESGEEVTTFFDYDYGAPCHKFDVKQIGAQLLPPLYSLVVFIFGFVGNMLVILILINC  
 KKLKCLTDIYLLNLAISDLLFLITLPLWAHSAANEWVFGNAMCKLFTGLYHIGYFGGIFFIILLTIDRYL  
 AIVHAVFALKARTVTFGVVTSVITWLVAVFASVPGIIFTKCQKEDSVYVCGPYFPRGWNNFHTIMRNILG  
 LVLPLLIMVICYSGILKTLRLCRNEKRRHRAVRVIFTIMIVYFLFWTPYINIVILLNTFFQEFFGLSNCEST  
 SQLDQATQVTETLGMTHCCINPIIYAFVGEKFRRYLSVFFRKHITKRFCQPCPVFYRETVDGVTSTNTPS  
 TGEQEVSAAGL

TRTRPLEQKLISEEDLAANDILDYKDDDDKV

**Chromatograms:** [https://cdn.origene.com/chromatograms/mk6047\\_f03.zip](https://cdn.origene.com/chromatograms/mk6047_f03.zip)

**Restriction Sites:** SgfI-MluI

**Cloning Scheme:**



**ACCN:** NM\_000648

**ORF Size:** 1080 bp

**OTI Disclaimer:** The molecular sequence of this clone aligns with the gene accession number as a point of reference only. However, individual transcript sequences of the same gene can differ through naturally occurring variations (e.g. polymorphisms), each with its own valid existence. This clone is substantially in agreement with the reference, but a complete review of all prevailing variants is recommended prior to use. [More info](#)

**OTI Annotation:** This clone was engineered to express the complete ORF with an expression tag. Expression varies depending on the nature of the gene.

**Components:** The ORF clone is ion-exchange column purified and shipped in a 2D barcoded Matrix tube containing 10ug of transfection-ready, dried plasmid DNA (reconstitute with 100 ul of water).

**Reconstitution Method:**

1. Centrifuge at 5,000xg for 5min.
2. Carefully open the tube and add 100ul of sterile water to dissolve the DNA.
3. Close the tube and incubate for 10 minutes at room temperature.
4. Briefly vortex the tube and then do a quick spin (less than 5000xg) to concentrate the liquid at the bottom.
5. Store the suspended plasmid at -20°C. The DNA is stable for at least one year from date of shipping when stored at -20°C.

**RefSeq:** [NM\\_000648.1](#), [NP\\_000639.1](#)

**RefSeq Size:** 1979 bp

**RefSeq ORF:** 1082 bp

**Locus ID:** 1231

**Cytogenetics:** 3p21.31

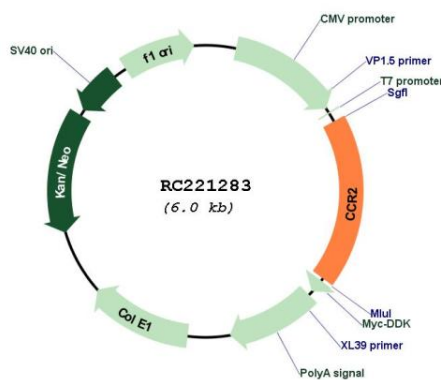
**Domains:** 7tm\_1

**Protein Families:** Druggable Genome, GPCR, Transmembrane

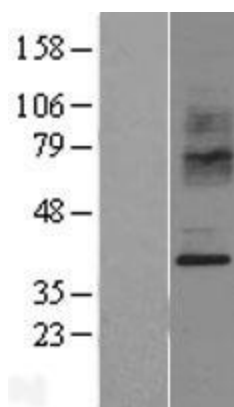
**MW:** 40.9 kDa

**Gene Summary:** This gene encodes two isoforms of a receptor for monocyte chemoattractant protein-1, a chemokine which specifically mediates monocyte chemotaxis. Monocyte chemoattractant protein-1 is involved in monocyte infiltration in inflammatory diseases such as rheumatoid arthritis as well as in the inflammatory response against tumors. The receptors encoded by this gene mediate agonist-dependent calcium mobilization and inhibition of adenylyl cyclase. This gene is located in the chemokine receptor gene cluster region. Two alternatively spliced transcript variants are expressed by the gene. [provided by RefSeq]

### Product images:



Circular map for RC221283



Western blot validation of overexpression lysate (Cat# [LY426625]) using anti-DDK antibody (Cat# [TA50011-100]). Left: Cell lysates from untransfected HEK293T cells; Right: Cell lysates from HEK293T cells transfected with [RC225538] using transfection reagent MegaTran 2.0 (Cat# [TT210002]).