

Product datasheet for **RC221280**

Nurr1 (NR4A2) (NM_006186) Human Tagged ORF Clone

Product data:

Product Type:	Expression Plasmids
Product Name:	Nurr1 (NR4A2) (NM_006186) Human Tagged ORF Clone
Tag:	Myc-DDK
Symbol:	Nurr1
Synonyms:	HZF-3; NOT; NURR1; RNR1; TINUR
Mammalian Cell Selection:	Neomycin
Vector:	pCMV6-Entry (PS100001)
E. coli Selection:	Kanamycin (25 ug/mL)



[View online »](#)

ORF Nucleotide
Sequence:

>RC221280 representing NM_006186
Red=Cloning site Blue=ORF Green=Tags(s)

CTATAGGGCGGCCGGAATTCGTCGACTGGATCCGGTACCGAGGAGATCTGCC
GCC**CGGATCGCC**

ATGCCTTGTGTT**CAGGCGCAGTATGGGTCTCGCCTCAAGGAGCCAGCCCGCTTCTCAGAGCTACAGTT**
ACCACTCTTCGGGAGAATACAGCTCCGATTTCTTAACTCCAGAGTTTGTCAAGTTTAGCATGGACCTCAC
CAAACTGAAATCACTGCCACCACTTCTCTCCCACTTCACTACCTTTATGGACAACACTACAGCACAGGC
TACGACGTCAAGCCACCTTGCTTGTACCAAATGCCCTGTCCGGACAGCAGTCTCCATTAAGGTAGAAG
ACATTCAGATGCACAAC**TACCAGCAACACAGCCACCTGCCCCCCAGTCTGAGGAGATGATGCCGCACTC**
CGGGTCGGTTTACTACAAGCCCTCTCGCCCCGACGCCACCACCCGGGCTTCCAGGTGCAGCACAGC
CCCATGTGGGACGACCCGGGATCTCTCCACAAC**TCCACCAGA**ACTACGTGGCCACTACGCACATGATCG
AGCAGAGGAAAACGCCAGTCTCCCGCTCTCCCTTTCTCTTTAAGCAATCGCCCCCTGGCACCCCGGT
GTCTAGTTGCCAGATGCGCTTCCAGGGGCCCTGCACGTCCCATGAACCCGGAGCCCGCCGGCAGCCAC
CACGTGGTGGACGGGACAGACCTTCGCTGTGCCAACCCATTTCGAAGCCCGCTCCATGGGCTTCCCGG
GCCTGCAGATCGGCCACGCGTCTCAGCTGCTCGACACGCAGGTGCCCTCACCGCCGTCGCGGGGCTCCCC
CTCAAACGAGGGGCTGTGCGCTGTGTGGGACAACGCGGCCTGCCAACTACGGCGTGCACCTGT
GAGGGCTGCAAAGGCTTCTTTAAGCGCACAGTGCAAAAAATGCAAAATACGTGTGTTTAGCAATAAAA
ACTGCCAGTGGACAAGCGTCGCCGGAATCGTGTGACTGCCGATTCAGAAAGTGCCTGGCTGTTGG
GATGGTCAAAGAAGTGGTTCCGACAGACAGTTTAAAGGCCGGAGAGTCTGTTGCCCTGAAACCGAAG
AGCCACAGGAGCCCTCTCCCTTCGCCCCGGTGAGTCTGATCAGTGCCTCGTCAGGGCCATGTCG
ACTCAACCCGGCTATGACCAGCCTGGACTATTCAGGTTCCAGGCGAACCTGACTATCAAATGAGTGG
AGATGACACCCAGCATATCCAGCAATTCTATGATCTCCTGACTGGCTCCATGGAGATTATCCGGGGCTGG
GCAGAGAAGATCCCTGGCTTCGACAGACCTGCCAAAGCCGACCAAGACCTGCTTTTTGAATCAGCTTCT
TAGAACTGTTTGTCTTCGATTAGCATA**CAGGTCCA**ACCAGTGGAGGGTAAACTCATCTTTTGAATGG
GGTGGTCTTGACAGGTTGCAATGCGTTCGTGGCTTTGGGGAATGGATTGATTCCATTGTTGAATTCTCC
TCCA**ACTTGC**AGAATATGAACATCGACATTTCTGCCTTCTCCTGCATTGCTGCCCTGGCTATGGTCACAG
AGAGACACGGGCTCAAGGAACCAAGAGAGTGGAAAGACTGCAAAACAAGATTGTAATTGTCTCAAAGA
CCAGT**GACTTT**CAACAATGGGGGTTGAACCGCCCAATTATTTGTCAA**ACTGTTGGG**GAAGCTCCCA
GA**ACTT**CGTACCCTTTGCACACAGGGGCTACAGCGC**ATTTT**CTACCTGAAATTGGAAGACTTGGTCCAC
CGCCAGCAATAATTGACAA**ACTTTT**CCTGGACACTTTACCTTTACGCGTCCGACGCGTACGCGGGCGCT
CGAGCAGAA**ACTCAT**CTCAGAAGAGGATCTGGCAGCAAATGATATCCTGGATTACAAGGATGACGACGAT
AAGTTTAAAC

AG**CGGACCG**ACGCGTACGCGGCCGCTCGAGCAGAA**ACTCATCTCTGAAGAGGATCTGGCAGCAAATGATATCCTGGATT**
ACAAGGATGACGACGATAAGGTTAA

Protein Sequence: >RC221280 representing NM_006186
 Red=Cloning site Green=Tags(s)

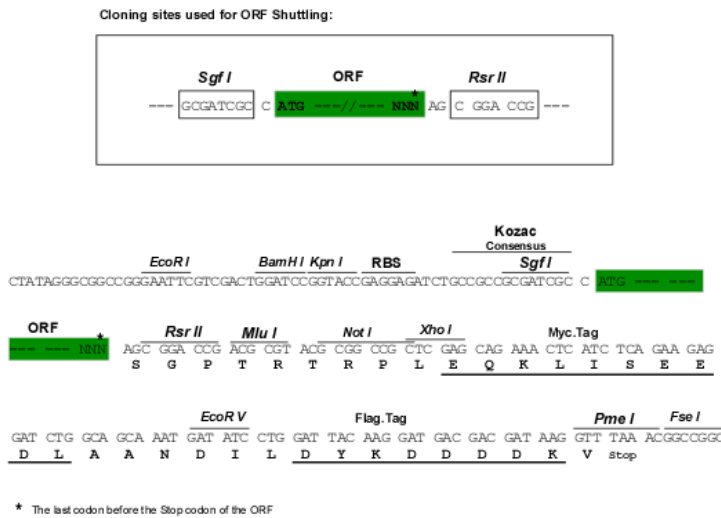
MPCVQAQYGSSPQGASPASQSYSHSSGEYSSDFLTPEFVKFSMDLTNTEITATTSLPSTFMDNYSTG
 YDVKPPCLYQMPLSGQQSSIKVEDIQMHNYQQHSHLPPQSEEMPHSGSVYYKPPSPPTPTTGFVQHS
 PMWDDPGLHNFHQNYVATTHMIEQRKTPVSRLSLFSFKQSPPGTPVSSCQMRFDGPLHVPMPNPEAGSH
 HVVDGQTFAVPNPIRKPAASMGFPGLQIGHASQLLDTQVPSPPSRGSPSNEGLCAVCGDNAACQHYGVRTC
 EGCKGFFKRTVQKNAKYVCLANKNCPVDKRRRNRCQYCRFQKCLAVGMVKEVVRTDSLKRRRGLPSKPK
 SPQEPSPPSPVSLISALVRAHVDSNPAMTSLDYSRFQANPDYQMSGDDTQHIQQFYDLLTGSMEIIRGW
 AEKIPGFADLPKADQDLLFESAFLELFLVRLAYRSNPVEGKLIFCNGVVLHRLQCVRGFGEWIDSIVEFS
 SNLQNMNIDISAFSCIAALAMVTERHGLKEPKRVEELQNKIVNCLKDHVTFNNGGLNRPNYLSKLLGKLP
 ELRTLCTQGLQRIFYLKLEDLVPPPAIIDKFLDLPFSGPTRTRPLEQKLISEEDLAANDILDYKDDDD
 KV*

SGPTRTRPLEQKLISEEDLAANDILDYKDDDDKV

Chromatograms: https://cdn.origene.com/chromatograms/mg4652_h01.zip

Restriction Sites: SgfI-RsrII

Cloning Scheme:



ACCN: NM_006186

ORF Size: 1794 bp

OTI Disclaimer: Due to the inherent nature of this plasmid, standard methods to replicate additional amounts of DNA in E. coli are highly likely to result in mutations and/or rearrangements. Therefore, OriGene does not guarantee the capability to replicate this plasmid DNA. Additional amounts of DNA can be purchased from OriGene with batch-specific, full-sequence verification at a reduced cost. Please contact our customer care team at custsupport@origene.com or by calling 301.340.3188 option 3 for pricing and delivery.

The molecular sequence of this clone aligns with the gene accession number as a point of reference only. However, individual transcript sequences of the same gene can differ through naturally occurring variations (e.g. polymorphisms), each with its own valid existence. This clone is substantially in agreement with the reference, but a complete review of all prevailing variants is recommended prior to use. [More info](#)

OTI Annotation: This clone was engineered to express the complete ORF with an expression tag. Expression varies depending on the nature of the gene.

Components: The ORF clone is ion-exchange column purified and shipped in a 2D barcoded Matrix tube containing 10ug of transfection-ready, dried plasmid DNA (reconstitute with 100 ul of water).

Reconstitution Method:

1. Centrifuge at 5,000xg for 5min.
2. Carefully open the tube and add 100ul of sterile water to dissolve the DNA.
3. Close the tube and incubate for 10 minutes at room temperature.
4. Briefly vortex the tube and then do a quick spin (less than 5000xg) to concentrate the liquid at the bottom.
5. Store the suspended plasmid at -20°C. The DNA is stable for at least one year from date of shipping when stored at -20°C.

RefSeq: [NM_006186.4](#)

RefSeq Size: 3447 bp

RefSeq ORF: 1797 bp

Locus ID: 4929

UniProt ID: [P43354](#)

Cytogenetics: 2q24.1

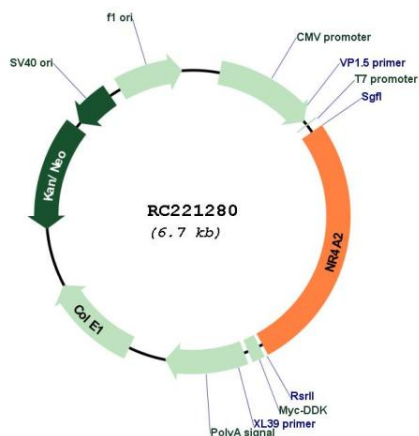
Domains: HOLI, zf-C4

Protein Families: Druggable Genome, Nuclear Hormone Receptor, Transcription Factors

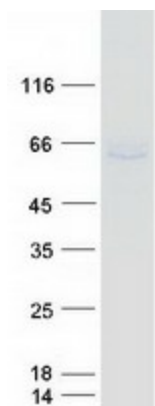
MW: 66.4 kDa

Gene Summary: This gene encodes a member of the steroid-thyroid hormone-retinoid receptor superfamily. The encoded protein may act as a transcription factor. Mutations in this gene have been associated with disorders related to dopaminergic dysfunction, including Parkinson disease, schizophrenia, and manic depression. Misregulation of this gene may be associated with rheumatoid arthritis. Alternatively spliced transcript variants have been described, but their biological validity has not been determined. [provided by RefSeq, Jul 2008]

Product images:



Circular map for RC221280



Coomassie blue staining of purified NR4A2 protein (Cat# [TP321280]). The protein was produced from HEK293T cells transfected with NR4A2 cDNA clone (Cat# RC221280) using MegaTran 2.0 (Cat# [TT210002]).