

Product datasheet for RC221279

COL14A1 (NM_021110) Human Tagged ORF Clone

Product data:

Product Type:	Expression Plasmids
Product Name:	COL14A1 (NM_021110) Human Tagged ORF Clone
Tag:	Myc-DDK
Symbol:	COL14A1
Synonyms:	UND
Mammalian Cell Selection:	Neomycin
Vector:	pCMV6-Entry (PS100001)
E. coli Selection:	Kanamycin (25 ug/mL)
ORF Nucleotide Sequence:	>RC221279 representing NM_021110 Red=Cloning site Blue=ORF Green=Tags(s)

TTTTGTAATACGACTCACTATAGGGCGGCCGGAATTCGTCGACTGGATCCGGTACCGAGGAGATCTGCC
GCC**CGATCGCC**

ATGAAGATTTCCAGCGCAAGATGCGGTACTGGTTGCTTCCACCTTTTTGGCAATTGTTTATTTCTGCA
CCATTGTCCAAGGTCAAGTGGCTCCACCCACAAGGTTAAGATATAATGTAATATCTCATGACAGTATACA
GATTTTCATGGAAGGCTCCAAGAGGGAAATTTGGTGGTTACAACTTCTTGTGACTCCAATTCAGGTGGA
AAAATAACCAGCTGAATCTGCAGAACTGCAACTAAAGCAATTATTCAAGGCTTATGCCAGACCAGA
ATTACACAGTTCAAATTATTGCATACAATAAGATAAAGAAAGCAAGCCAGCTCAAGGCCAATTCAGAAT
TAAAGATTTAGAAAAAGAAAGGATCCAAAGCCCAGAGTCAAAGTTGTGGACAGAGGAAATGGGAGTAGA
CCATCTTCACCAGAAGAAGTGAATTTGTCTGTCAAACCTCCAGCAATTGCTGACATTGTAATCCTGGTCG
ATGGTTTACATGGAGTATTGGAAGATTCAACTTCAGACTGGTTCCGGCATTCTTGGAAAACCTGGTTACAGC
ATTCGATGTGGGCTCAGAGAAGACACGAATTGGTCTTGCACAGTATAGTGGTGACCCAGAATAGAATGG
CACTTGAATGCATTTAGCACAAAAGATGAAGTATTGAAGCTGTCCGAAACCTCCCATATAAAGGAGGAA
ATACACTAACAGGTCTTGCTTTGAACTACATTTTTGAAAATAGCTCAAACCAGAAGCAGGATCAAGGAC
TGGAGTATCCAAAATTGGCATTTTAATCACAGATGGAAAATCCCAAGATGACATTATCCACCATCTAGA
AATCTTCTGTGAGTCTGGTGTAGAAGTGTGGCCATAGGGGTGAAAACCGGGATGTAATGAGCTGCAGG
AGATCGCCTCTGAACCAGACAGCACTCATGTGTACAATGTTGCCGAATTCGATCTGATGCACACAGTTGT
GGAGAGTCTGACCAGGACTCTCTGCTCTAGAGTGAAGAACAGGACAGAGAAATTAAGCCCTCAGCCCAT
GCCATCACTGGGCCGCTACGGAGTTGATTACTTCTGAAGTCACTGCCAGAAGCTTTATGGTTAACTGGA
CTCATGCCCCAGGAAATGTGAAAAAATACAGAGTTGTGTATTATCCTACCAGGGGTGAAAAACCAGACGA
GGTGGTGGTAGATGGAAGTGTATCTTCCACAGTGTGAAAACTTGATGTCTTTAACTGAATATCAGATA
GCAGTCTTTGCAATCTATGCCACACTGCTAGTGAAGGCTACGGGAACTGAAACTACACTTGCTTTAC
CGATGGCTTCTGACCTTCTACTGTACGACGTGACTGAGAACAGCATGCGAGTCAAATGGGATGCAGTGCC
TGGGGCCTCAGGTTACCTGATCCTTTATGCTCCTAACAGAGGGCCTGGCTGGGATGAAAAAGAGATG



[View online »](#)

AAAATTGGAGAGACCCACACAGATATTGAATTGAGTGGGTTGTTGCCAATACAGAATACACAGTCACAG
 TTTATGCCATGTTTGGAGAAGAGGCCAGTGATCCTGTTACGGGACAAGAAACAACATTGGCTTTAAGTCC
 ACCAAGAAACCTGAGAATCTCCAATGTTGGCTCTAACAGTGCTCGATTAACCTGGGACCCAACTTCAAGA
 CAGATCAATGGTTATCGAATTGTATAAACAATGCAGATGGGACTGAAATCAATGAGGTTGAAGTCGATC
 CTATTACTACCTCCCTCTGAAGGGCTTGACACCTCTCACAGGTATACTATTGCTATTTTCTCCATCTA
 TGATGAAGGACAGTCAGAGCCTCTGACTGGAGTTTTTACCACCGAGGAAGTCCAGCCCAGCAACTACTTA
 GAAATGATGAGGTGACGACAGACAGTTTTAGGGTGACCTGGCATCCCCCTCTCAGTGATGAAGGGCTAC
 ACAAATTGATGTGGATTCCAGTCTATGGGGGAAGACTGAGGAGTTGCTCTGAAAGAAGCAGGACTC
 ACATGTTATTGAAGGCCTGGAGCCCGTACGGAGTATGAAGTTTCACTATTGGCCGTA CTTGATGATGGA
 AGCGAGAGTGAGGTGGTACTGCTGTGCGGACCACACTTGACAGTTTTTGGACAGAACCGCTACAACCA
 TAGTGCTTACCACATCTGTACTTCAGTTTTCCAGACGGGAATCAGAAACCTAGTTGTAGGTGATGAAAC
 TACTTCTAGCCTGCGGGTAAAATGGGACATTTCTGACAGCGATGTGCAGCAGTTTAGGGTGACCTACATG
 ACAGCTCAAGGGACCCCTGAGGAAGAAGTCATAGGAACGGTTATGGTGCCTGGAAGCCAGAACAACCTCC
 TTCTGAAGCCTCTGCTTCTGATACTGAATACAAAGTCACAGTGACTCCCATCTACACGGATGGCGAAGG
 CGTCAGCGTCTCCGCTCTGGAAAAACCTTACCATCCTCGGGGCCCCAGAACTTGGGGGTGTCGAGGAA
 TGGTATAACCGGTTGCGCATTACGTGGGACCCCCATCTCCCCGGTGAAGGCTATAGAATTGTCTACA
 AACCTGTCAAGTGTCTGGTCCAACACTGGAAACGTTTGTGGGAGCTGACATTAACACCATCCTTATCAC
 AAACCTCCTCAGCGGAATGGACTACAATGTGAAGATATTTGCCTCCCAGGCCTCAGGCTTACGCGACGCC
 CTGACAGGCATGGTGA AACATTGTTCTTGGGTGTTACCAATCTCCAAGCCAAACATGTTGAAATGACCA
 GCTTGTGTGCCACTGGCAGGTACATCGCCATGCCACAGCCTATAGGGTGTATAGAATCCCTCCAGGA
 TAGGCAAAAGCAAGAATCCACTGTGGGTGGAGGGACAACCAGGCATTGCTTCTATGGACTCAGCCTGAT
 TCTGAATATAAAATCAGTGTATATACAAAGTCCAGGAGATTGAAGGACCTAGTGTGAGCATAAATGGAAA
 AAACACAATCACTTCTACACGACCACCACTTTTCTCCAACCATCCACCAGCAAAAGAAATGTATA
 GCGCGCAAGGCTGACCTGGTATTTATGGTGGATGGATCCTGGAGCATTGGAGATGAAAAATTTCAATAAG
 ATCATCAGCTTTCTATACAGCACTGTTGGAGCCCTGAACAAGATTGGCACAGATGGAACCCAAGTTGCAA
 TGGTTCAGTTCAGTATGATCCCAGAACAGAAATTA AACTAAATGCTTACAAAACCAAAGAGACTTTCT
 TGATGCAATTAACACATTTTATACAAAGGAGGAAATACAAAACAGGAAAAGCAATTAAGTATGTTGGA
 GATACCTGTTCACTGCAGAGTCAGGTACAAGAAGGGGCATCCCAAAGGTTATCGTGGTTATAACTGATG
 GAAGATACAAGATGATGTGAACAAAATCTCCAGGGAGATGCAATTAGATGGCTATAGCATTTTTGCAAT
 TGGTGTGGCCGATGCAGATTACTCGGAGTTGGTTAGCATTGGCAGTAAGCCACGCGCACGCCATGTCTTC
 TTTGTGGATGACTTTGACGCCTTAAGAAAATCGAAGATGAGTTAATTACTTTTGTCTGCGAAACAGCAT
 CAGCAACCTGTCCAGTGGTACACAAGGATGGCATTGATCTTGCAGGATTTAAGATGATGGAATGTTTGG
 TTTGGTTGAAAAAGATTTTTATCAGTGGAAAGGGTTTCTATGGAGCCTGGTACCTTCAATGTGTTTCCA
 TGTTACCAACTCCATAAAGATGCCTGGTTTCCAGCCAACCAGGTA CTTGACCCAGAAGGATTGCCCT
 CCGACTACACAATCAGTTTTCTATTCCGGATTCTTCTGACACTCCACAGGAGCCATTTGCTCTTTGGGA
 GATTTTAAATAAAAAATCTGACCATTGGTTGGGGTATTTTAGACAATGGTGGGAAAACCTAACATAT
 TTCAACTATGACCAGAGTGGGGATTTTCAAACCTGTTACTTTTGAAGGACCTGAAATTAGGAAAATTTTT
 ATGGAAGCTTTCACAAGCTACACATTGTGTGAGTACTTTGGTCAAAGTGGTTATTGACTGCAAGCA
 AGTGGGTGAGAAGGCAATGAACGCATCAGCTAATATCACGTGAGTGGTGTAGAAGTCTAGGGAAAATG
 GTTCGATCAAGAGGACCAGGTGGAAACTCTGCACCGTTCCAGTTACAGATGTTTGATATTGTTTGTCCA
 CATCATGGGCAATACAGACAAATGCTGTGAACTTCCAGGCCTGAGAGATGATGAGTCTTGCCAGACCT
 TCCCCATTCTGCTCCTGTTCTGAAACCAATGAAGTGGCTCTGGGACCAGCGGGCCACCAGGTGGTCCA
 GGACTCCGAGGACCAAAGGGCCAGCAAGGTGAACCGGGTCCAAGGGACCAGATGGCCCTCGGGGTGAAA
 TTGGTCTGCCAGGACCTCAGGGTCCACCTGGACCTCAAGGACCAAGTGGTCTGTCCATTCAAGGAATGCC
 CGGAATGCCAGGAGAAAAAGGAGAGAAAGGAGATACTGGCCTTCCAGGTCCACAGGGTATCCAGGAGGC
 GTTGGTTCACCAGGACGTGATGGCTCACCAGGCCAGAGGGGCTTCCGGGAAAGGATGGATCCTCGGGAC
 CTCAGGACCACCAGGGCAATAGGCATTCCTGGCACCCCTGGAGTCCCAGGGATCACAGGAAGCATGGG
 ACCGCAAGGCGCCTGGGACCACCTGGTGTCCCTGGAGCAAGGGGGAACGAGGAGAGCGGGGTGACCTG
 CAGTCTCAAGCCATGGTGAATCAGTGGCGCTCAAGTATGCGAACAGCTCATCCAGAGTCACATGGCCA
 GGTACTACTGCCATCCTCAACCAGATTCCAGCCACTCCTCATCCATCCGGACTGTCCAAGGGCTCCTGG
 GGAGCCTGGGAGGCCAGGCTCACCTGGAGCCCCTGGTGAACAAGGACCCCCAGGCACACCAGGCTTCCCC
 GGAAATGCAGGCGTGCCAGGGACCCAGGAGAACGAGGTCTAACTGGTATCAAAGGAGAAAAAGGAAATC

CAGGCGTTGGAACCCAAGGTCCAAGAGGCCCCCTGGACCAGCAGGACCTTCAGGGGAGAGTCGGCCTGG
 CAGCCCTGGGCCCCCTGGCTCTCCTGGACCAAGAGGCCACCAGGTCATCTGGGGTTCTGGACCCCAA
 GGTCTTCTGGCCAGCCTGGATATTGTGACCCCTCATCATGTTCTGCCTATGGTGTGAGAGCTCCCCATC
 CAGATCAGCCAGAGTTACCCCTGTCCAAGATGAGCTGGAAGCCATGGAAGTGTGGGGCCCTGGAGTC

ACGCGTACGCGGGCCGCTCGAGCAGAACTCATCTCAGAAGAGGATCTGGCAGCAATGATATCCTGGATT
 ACAAGGATGACGACGATAAGGTTTAA

Protein Sequence:

>RC221279 representing NM_021110
 Red=Cloning site Green=Tags(s)

MKIFQRKMRYWLLPPFLAIVYFCTIVQGVAPPTRLRYNVISHDSIQISWKAPRGKFGGYKLLVPTPSSG
 KTNQLNLQNTATKAI IQGLMPDQNYTVQIIAYNKDKESKPAQQGFRIKDLEKRKDPKPRVKVVDNRNGSR
 PSSPEEVKFCQTPAIADIVILVDGSWSIGRFNFRVLRHFLNLVAFDVGSEKTRIGLAQYSGDPRIEW
 HLNAFSTKDEVIEAVRNLPHYKGGNTLTGLALNYIFENSKPEAGSRTGVSKIGILITDGKSQDDIIPPSR
 NLRESGVELFAIGVNADVNELQEIASEPDSTHVYNVAEFDLMHTVVESLTRTLCSRVEEQDREIKASAH
 AITGPPELITSEVTARSMVNWTHAPGNVEKYRVVYYPTRGGKPDEVVVDGTVSSTVLKLNLSLMEYQI
 AVFAIYAHTASEGLRGTEETLALPMSDLLLYDVTENSMRVKWDVAVPGASGYLILYAPLTEGLAGDEKEM
 KIGETHDIELSGLLPNTEYTVVYAMFGEEASDPVTGQETTLALSPRNLRI SNVGSNSARLTWDPSTR
 QINGYRIVYNNADGTEINEVEVDPITTFPLKGLTPLTEYTAIFSIYDEGQSEPLTGVTFTTEEVAQOYL
 EIDEVTTDSFRVTHWPLSADEGLHKLMPVYGGKTEEVVLKEEQDSHVIEGLEPGTEYEVSLAVLDDG
 SESEVVTAVGTTLDSFWTEPATTIVPTTSVTSVFQTGIRNLVVGDETTSSLRVKWDISDSVQVQFRVTYM
 TAQGDPEEEVIGTVMVPGSQNNLLKPLLPDTEYKVTVTPIYTDGEGVSVSAPGKTLPSGGPQNLRVSEE
 WYNRLRITWPPSSPVKGYRIVYKPVSVPGPTLETFFVADINTILITNLLSGMDYNVVKIFASQASGFSDA
 LTGMVKTFLGLVGNLQAKHVEMTSLCAHWQVHRHATAYRVVIESLQDRQKQESTVGGGTRHCFYGLQPD
 SEYKISVYTKLQIEGSPVSIMEKTQSLPTRPPTFPPTIPPAKEVCKAAKADLVFMDVGSWSIGDENFNK
 IISFLYSTVGLNKGITDGTQVAMVQFTDDPRTEFKLNAYKTKETLLDAIKHISYKGGNTKTKGAIKYVR
 DTLFTAESGTRRGI PKVIVVITDGRSQDDVNKISREMQLDGYSIFAIGVADADYSELVSIKSPSARHVF
 FVDDFDFAKKIEDELITFCETASATCPVVHKDGDIDLAFKMMEMFGLVEKDFSSVEGVSMEPGTFNVFP
 CYQLHKDALVSQPTRYLHPEGLPSDYTTISFLFRILPDTPEPFALWEILNKNSDPLVGVILDNGGKTLTY
 FNYDQSGDFQTVTFEGPEIRKIFYGSHKLIHVSETLVKVVIDCKQVGEKAMNASANITSDGVEVLGKM
 VRSRGGPNSAPFQLQMFDIVCSTSWANTDKCCELPGLRDESCPDLPKSCSCSETNEVALGPAGPPGGP
 GLRGPKGQGEPPGKPDGPRGEI GLPGPQGGPPGQPSGLSIQGMGMPGEKGEKGTGLPGPQGI PGG
 VGSPGRDGSPPGRLPGKDGSSGPPGPPGPIGIPGTGVPGITGSMGPQALGPPGVPAKGERGERGDL
 QSQAMVRSVARQVCEQLIQSHMARYTALNQNIPSHSSSIRTVQPPGEPGRPGSPGAPGEQPPGTPGFP
 GNAGVPGTPGERLGTGKGEKGNPGVGTQGRPPGPPGAPSGESRPGSPGPPGSPGPRGPPGHLGVPGPQ
 GPSGQPGYCDPSSCSAYGVRAPHDPQPEFTPVQDELEAMELWGPV

TRTRPLEQKLI SEEDLAANDILDYKDDDDKV

Chromatograms:

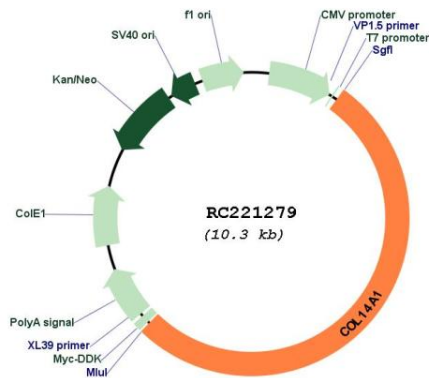
https://cdn.origene.com/chromatograms/mk8101_b03.zip

Restriction Sites:

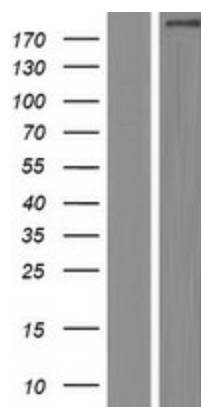
SgfI-MluI

Components:	The ORF clone is ion-exchange column purified and shipped in a 2D barcoded Matrix tube containing 10ug of transfection-ready, dried plasmid DNA (reconstitute with 100 ul of water).
Reconstitution Method:	<ol style="list-style-type: none"> 1. Centrifuge at 5,000xg for 5min. 2. Carefully open the tube and add 100ul of sterile water to dissolve the DNA. 3. Close the tube and incubate for 10 minutes at room temperature. 4. Briefly vortex the tube and then do a quick spin (less than 5000xg) to concentrate the liquid at the bottom. 5. Store the suspended plasmid at -20°C. The DNA is stable for at least one year from date of shipping when stored at -20°C.
RefSeq:	<u>NM_021110.4</u>
RefSeq Size:	6463 bp
RefSeq ORF:	5391 bp
Locus ID:	7373
UniProt ID:	<u>Q05707</u>
Cytogenetics:	8q24.12
Protein Families:	Transmembrane
MW:	193.5 kDa
Gene Summary:	This gene encodes the alpha chain of type XIV collagen, a member of the FACIT (fibril-associated collagens with interrupted triple helices) collagen family. Type XIV collagen interacts with the fibril surface and is involved in the regulation of fibrillogenesis. [provided by RefSeq, Jan 2013]

Product images:



Circular map for RC221279



Western blot validation of overexpression lysate (Cat# [LY412082]) using anti-DDK antibody (Cat# [TA50011-100]). Left: Cell lysates from untransfected HEK293T cells; Right: Cell lysates from HEK293T cells transfected with RC221279 using transfection reagent MegaTran 2.0 (Cat# [TT210002]).