

Product datasheet for **RC221264**

EEF1B2 (NM_001959) Human Tagged ORF Clone

Product data:

Product Type:	Expression Plasmids
Product Name:	EEF1B2 (NM_001959) Human Tagged ORF Clone
Tag:	Myc-DDK
Symbol:	EEF1B2
Synonyms:	EEF1B; EEF1B1; EF1B
Mammalian Cell Selection:	Neomycin
Vector:	pCMV6-Entry (PS100001)
E. coli Selection:	Kanamycin (25 ug/mL)
ORF Nucleotide Sequence:	>RC221264 representing NM_001959 Red=Cloning site Blue=ORF Green=Tags(s)

TTTTGTAATACGACTCACTATAGGGCGGCCGGAATTCGTCGACTGGATCCGGTACCGAGGAGATCTGCC
GCC**CGATCGCC**

ATGGGTTTCGGAGACCTGAAAAGCCCTGCCGGCCTCCAGGTGCTCAACGATTACCTGGCGGACAAGAGCT
ACATCGAGGGGTATGTGCCATCACAAGCAGATGTGGCAGTATTTGAAGCCGTGTCCAGCCCACCGCCTGC
CGACTTGTGTCATGCCCTACGTTGGTATAATCACATCAAGTCTTACGAAAAGGAAAAGGCCAGCCTGCCA
GGAGTGAAGAAAGCTTTGGCAAATATGGTCTGCCGATGTGGAAGACACTACAGGAAGTGGAGCTACAG
ATAGTAAAGATGATGATGACATTGACCTCTTTGGATCTGATGATGAGGAGGAAAGTGAAGAAGCAAAGAG
GCTAAGGGAAGAAGCTTGCACAATATGAATCAAAGAAAGCCAAAAACCTGCACCTTGTGCAAGTCT
TCCATCTTACTAGATGTGAAACCTTGGGATGATGAGACAGATATGGCGAAATTAGAGGAGTGCCTCAGAA
GCATTCAAGCAGACGGCTTAGTCTGGGGCTCATCTAACTAGTCCAGTGGGATACGGAATTAAGAACT
TCAAATACAGTGTGTAGTTGAAGATGATAAAGTTGGAACAGATATGCTGGAGGAGCAGATCACTGCTTTT
GAGGACTATGTGCAGTCCATGGATGTGGCTGCTTTCAACAAGATC

ACGCGTACGCGGGCCGCTCGAGCAGAAACTCATCTCAGAAGAGGATCTGGCAGCAAATGATATCCTGGATT
ACAAGGATGACGACGATAAGGTTTAA



[View online »](#)

Protein Sequence: >RC221264 representing NM_001959
Red=Cloning site Green=Tags(s)

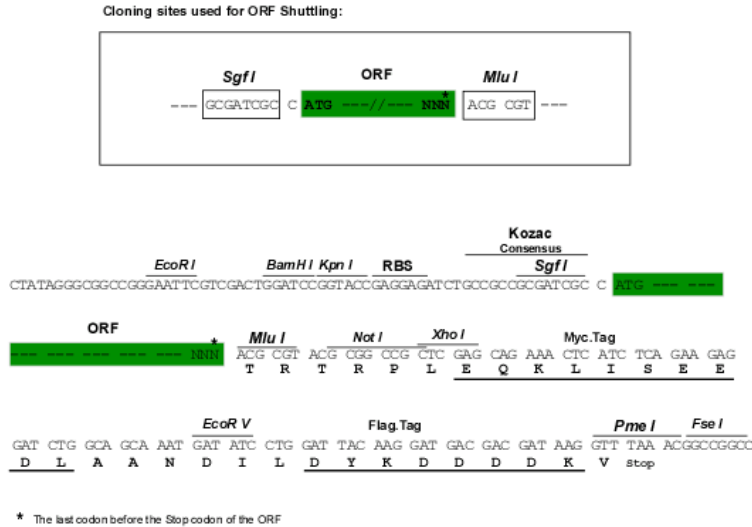
MGFGDLKSPAGLQVLNDYLADKSYIEGYVPSQADVAVFEAVSSPPADLCHALRWYNHIKSYEKEKASLP
 GVKKALGKYGPADVEDTTGSGATDSKDDDDIDLFGSDDEEESSEAKRLREERLAQYESKKAKKPALVAKS
 SILLDVKPWDEETDMAKLEECVRSIQADGLVWSSKLVVPGYGIKKLQIQCVVEDDKVGTMDLLEEQITAF
 EDYVQSMDVAAFNKI

TRTRPLEQKLISEEDLAANDILDYKDDDDKV

Chromatograms: https://cdn.origene.com/chromatograms/mk6036_f05.zip

Restriction Sites: SgfI-MluI

Cloning Scheme:



ACCN: NM_001959

ORF Size: 675 bp

OTI Disclaimer: The molecular sequence of this clone aligns with the gene accession number as a point of reference only. However, individual transcript sequences of the same gene can differ through naturally occurring variations (e.g. polymorphisms), each with its own valid existence. This clone is substantially in agreement with the reference, but a complete review of all prevailing variants is recommended prior to use. [More info](#)

OTI Annotation: This clone was engineered to express the complete ORF with an expression tag. Expression varies depending on the nature of the gene.

Components: The ORF clone is ion-exchange column purified and shipped in a 2D barcoded Matrix tube containing 10ug of transfection-ready, dried plasmid DNA (reconstitute with 100 ul of water).

Reconstitution Method:

1. Centrifuge at 5,000xg for 5min.
2. Carefully open the tube and add 100ul of sterile water to dissolve the DNA.
3. Close the tube and incubate for 10 minutes at room temperature.
4. Briefly vortex the tube and then do a quick spin (less than 5000xg) to concentrate the liquid at the bottom.
5. Store the suspended plasmid at -20°C. The DNA is stable for at least one year from date of shipping when stored at -20°C.

RefSeq: [NM_001959.4](#)

RefSeq Size: 961 bp

RefSeq ORF: 678 bp

Locus ID: 1933

UniProt ID: [P24534](#)

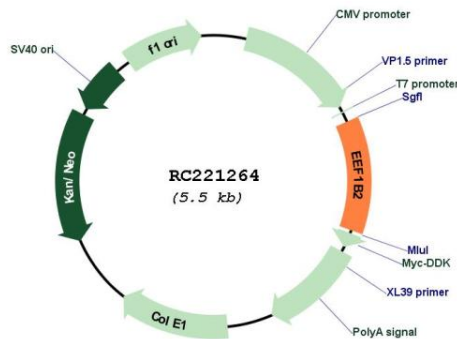
Cytogenetics: 2q33.3

Domains: EF1BD

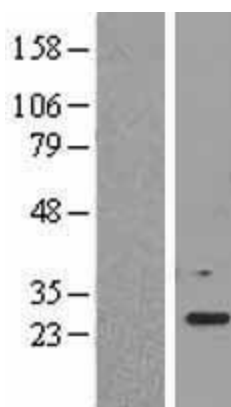
MW: 24.6 kDa

Gene Summary: This gene encodes a translation elongation factor. The protein is a guanine nucleotide exchange factor involved in the transfer of aminoacylated tRNAs to the ribosome. Alternative splicing results in three transcript variants which differ only in the 5' UTR. [provided by RefSeq, Jul 2008]

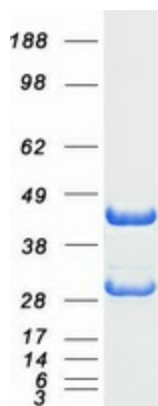
Product images:



Circular map for RC221264



Western blot validation of overexpression lysate (Cat# [LY400721]) using anti-DDK antibody (Cat# [TA50011-100]). Left: Cell lysates from untransfected HEK293T cells; Right: Cell lysates from HEK293T cells transfected with RC221264 using transfection reagent MegaTran 2.0 (Cat# [TT210002]).



Coomassie blue staining of purified EEF1B2 protein (Cat# [TP321264]). The protein was produced from HEK293T cells transfected with EEF1B2 cDNA clone (Cat# RC221264) using MegaTran 2.0 (Cat# [TT210002]).