

Product datasheet for **RC221260**

ZGPAT (NM_181485) Human Tagged ORF Clone

Product data:

Product Type:	Expression Plasmids
Product Name:	ZGPAT (NM_181485) Human Tagged ORF Clone
Tag:	Myc-DDK
Symbol:	ZGPAT
Synonyms:	GPATC6; GPATCH6; KIAA1847; ZC3H9; ZC3HDC9; ZIP
Mammalian Cell Selection:	Neomycin
Vector:	pCMV6-Entry (PS100001)
E. coli Selection:	Kanamycin (25 ug/mL)



[View online »](#)

ORF Nucleotide Sequence:

>RC221260 ORF sequence
 Red=Cloning site Blue=ORF Green=Tags(s)

TTTTGTAATACGACTCACTATAGGGCGGCCGGAATTCGTCGACTGGATCCGGTACCGAGGAGATCTGCC
 GCC**CGGATCGCC**

ATGGACGAGGAGCCTGGAGTCGGCCTTGCAGACCTACCGTGGCAGCTGCAGCAGGTGGAGCTGGCCT
 TGGGCGCCGGCCTGGATTGCTCTGAGCAGGCTGACCTGCCAGCTGCAGGGGGACCTGAAGGAGCTCAT
 CGAGCTCACCGAGGCCAGCCTGGTGTCTGTGAGGAAGAGCAGGTTGTTGGCCGCGCTGGACGAAGAGCGC
 CCGGGCCGCCAGGAAGATGCTGAGTACCAGGCTTCCGGGAGGCCATCACTGAGGCGGTGGAGGCCACGAG
 CAGCGGCCGTTGGTCCGGATCAGAGACCGTTCCTAAAGCAGAGGCGGGGCCAGAATCTGCGGCAGGTGG
 GCAGGAGGAGGAAGAGGGAGAGGACGAGGAAGAGCTGAGTGGGACAAAGGTGAGCGGCCCTACTACAGC
 TCCTGGGGCACTCTGGAGTATCACAAACCCATGGTGGTGGGAACGAAGAGGCGGAGGATGGCTCGGCGG
 GTGTCCGTGTGCTTACCTGTACCCCACTACAAGTCTCTGAAGCCGTGCCGTTCTTCTGGAGGGAAA
 GTGCCGCTTAAAGGAACTGCAGGTTCTCCCATGGGCAGGTGGTCTCTCTGGATGAGCTGCGCCCTTC
 CAGGACCCAGACCTGAGCTCCCTGCAGGCGGCTCTGCGTGTCTGGCCAAGCACCAGGATGGCCTCTGGC
 ACGCAGCACGCATCACCGATGTGGACAACGGCTACTACACAGTCAAGTTTGACTCGCTGCTGCTGAGGGA
 GGCCGTGGTGGAGGGGACGGCATCCTGCCCCACTGCGCACAGAGGCCACAGAGTCCGACTCAGACAGC
 GACGGTACGGGTGACTCCAGCTATGCCAGAGTGGTGGGTGAGTGTGTGGACTCTGGGACCTGCAGCT
 CTGCCCTTGTGGCTGGGAGGTGCACACGCGAGGTATAGGCTCCAGACTCCTCACCAAGATGGGCTATGA
 GTTTGGCAAGGGTTTGGCCGACACGCGGAAGGCCGGTGGAGCCATCCATGCTGTGGTGTTCCTCGA
 GGAAGTCGCTGGACAGTGTGTGGAGACCCTGCAGAAGCAGACCAGGTTGGCAAGGTGGCACCAACA
 AGCCCCCAGTCCGGGGAAGAGGGGCCAGGCTGGGGCCGCCAGCTCCTCGAATGTGTTTACTT
 CCTCAATGAAAAGCTGCAAGGTCAAGGCTCCTGGGGCCCTAGAAGCCGGGGCGGCCCCAGCGGGGAGGAGG
 AGCAAGGACATGTACCATGCCAGCAAGAGTGCCAAGCGGGCCCTGAGCCTGCGGCTCTTCCAGACTGAGG
 AGAAGATCGAGCGAACCCAGCGGACATCAGGAGCATCCAGGAGGCTCTCGCCCGCAACGCTGGCCGGCA
 TAGCGTGGCGTACGCCAGCTGCAGGAGAAGCTGGCAGGAGCCAGCGCCAGCTGGGGCAGCTCCGGGCT
 CAGGAAGCCGGCTGCAGCAGGAGCAGAGGAAGGCAGACACCCACAAGAAGATGACTGAGTTT

ACGCGTACGCGGCCGCTCGAGCAGAACTCATCTCAGAAGAGGATCTGGCAGCAAATGATATCTGGATT
 ACAAGGATGACGACGATAAGGTTTAA

Protein Sequence:

>RC221260 protein sequence
 Red=Cloning site Green=Tags(s)

MDEESLESALQTYRAQLQQVELALGAGLDSSEQADLRQLQGDLELIELTEASLVSVRKSRLLAALDEER
 PGRQEDAEYQAFREAITAEVEAPAAARGSGSETVPKAEAGPESAAGQEEEEGEDEEELSGTKVSAPYYS
 SWGTLEYHNAMVVGTEEAEDGSAGVRVLYLYPTHKSLKPCPFLELGKCRFKENCRF SHGQVVSLELDRPF
 QDPDLSSLQAGSACLAKHQDGLWHAARITDVDNGYTYVKFDSLRLREAVVEGDGILPPLRTEATESDSDS
 DGTGDSSYARVVGSDAVDSGTCSSAFAGWEVHTRGIGSRLLTKMGYEFKGLGRHAEGRVEPIHAVVLP
 GKSLDQCVELQKQTRVKGAGTNKPPRCRGRGARPGGRPAPRNVDFLNEKLQGGQAPGALEAGAAPAGRR
 SKDMYHASKSAKRALSRLRFQTEEKIERTQRDIRSIQEALARNAGRHSVASAQLQEKLQLAGAQRQLGQLRA
 QEAGLQEQRKADTHKKMTEF

TRTRPLEQKLI SEEDLAANDILDYKDDDDKV

Chromatograms:

https://cdn.origene.com/chromatograms/mk6337_g12.zip

Restriction Sites:

Sgfl-Mlul

Cloning Scheme:

ACCN: NM_181485

ORF Size: 1533 bp

OTI Disclaimer: Due to the inherent nature of this plasmid, standard methods to replicate additional amounts of DNA in E. coli are highly likely to result in mutations and/or rearrangements. Therefore, OriGene does not guarantee the capability to replicate this plasmid DNA. Additional amounts of DNA can be purchased from OriGene with batch-specific, full-sequence verification at a reduced cost. Please contact our customer care team at custsupport@origene.com or by calling 301.340.3188 option 3 for pricing and delivery.

The molecular sequence of this clone aligns with the gene accession number as a point of reference only. However, individual transcript sequences of the same gene can differ through naturally occurring variations (e.g. polymorphisms), each with its own valid existence. This clone is substantially in agreement with the reference, but a complete review of all prevailing variants is recommended prior to use. [More info](#)

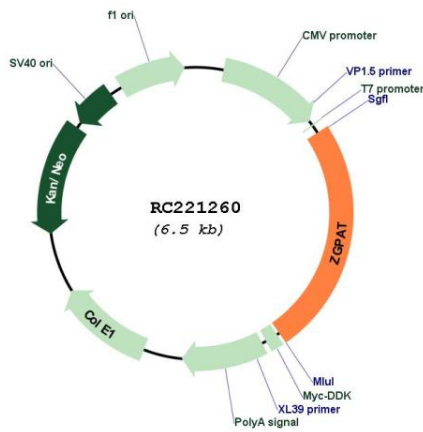
OTI Annotation: This clone was engineered to express the complete ORF with an expression tag. Expression varies depending on the nature of the gene.

Components: The ORF clone is ion-exchange column purified and shipped in a 2D barcoded Matrix tube containing 10ug of transfection-ready, dried plasmid DNA (reconstitute with 100 ul of water).

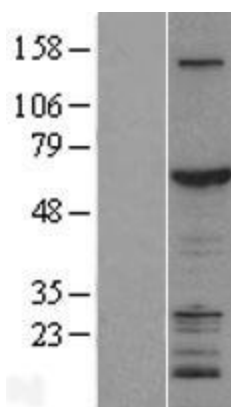
- Reconstitution Method:**
1. Centrifuge at 5,000xg for 5min.
 2. Carefully open the tube and add 100ul of sterile water to dissolve the DNA.
 3. Close the tube and incubate for 10 minutes at room temperature.
 4. Briefly vortex the tube and then do a quick spin (less than 5000xg) to concentrate the liquid at the bottom.
 5. Store the suspended plasmid at -20°C. The DNA is stable for at least one year from date of shipping when stored at -20°C.

Note:	Plasmids are not sterile. For experiments where strict sterility is required, filtration with 0.22um filter is required.
RefSeq:	<u>NM_181485.1</u> , <u>NP_852150.1</u>
RefSeq Size:	1898 bp
RefSeq ORF:	1536 bp
Locus ID:	84619
UniProt ID:	<u>Q8N5A5</u>
Cytogenetics:	20q13.33
MW:	55.6 kDa
Gene Summary:	Transcription repressor that specifically binds the 5'-GGAG[GA]A[GA]A-3' consensus sequence. Represses transcription by recruiting the chromatin multiprotein complex NuRD to target promoters. Negatively regulates expression of EGFR, a gene involved in cell proliferation, survival and migration. Its ability to repress genes of the EGFR pathway suggest it may act as a tumor suppressor. Able to suppress breast carcinogenesis.[UniProtKB/Swiss-Prot Function]

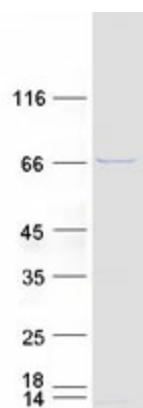
Product images:



Circular map for RC221260



Western blot validation of overexpression lysate (Cat# [LY405782]) using anti-DDK antibody (Cat# [TA50011-100]). Left: Cell lysates from untransfected HEK293T cells; Right: Cell lysates from HEK293T cells transfected with RC221260 using transfection reagent MegaTran 2.0 (Cat# [TT210002]).



Coomassie blue staining of purified ZGPAT protein (Cat# [TP321260]). The protein was produced from HEK293T cells transfected with ZGPAT cDNA clone (Cat# RC221260) using MegaTran 2.0 (Cat# [TT210002]).