

## Product datasheet for **RC221258**

### **GPR89A (NM\_001097613) Human Tagged ORF Clone**

#### **Product data:**

Product Type:	Expression Plasmids
Product Name:	GPR89A (NM_001097613) Human Tagged ORF Clone
Tag:	Myc-DDK
Symbol:	GPR89A
Synonyms:	GPHR; GPR89; GPR89B; SH120; UNQ192
Mammalian Cell Selection:	Neomycin
Vector:	pCMV6-Entry (PS100001)
E. coli Selection:	Kanamycin (25 ug/mL)



[View online »](#)

**ORF Nucleotide Sequence:**

>RC221258 representing NM\_001097613  
 Red=Cloning site Blue=ORF Green=Tags(s)

TTTTGTAATACGACTCACTATAGGGCGGCCGGAATTCGTCGACTGGATCCGGTACCGAGGAGATCTGCC  
 GCC**CGCATCGCC**

ATGCGCCAATTGTTTAAAGACTATGAGATACGTCAGTATGTTGTACAGGTGATCTTCTCCGTGACGTTTG  
 CATTTTCTTGACCATGTTTGTAGCTCATCATCTTTGAAATCTTAGGAGTATTGAATAGCAGCTCCCGTTA  
 TTTTCACTGGAATAATGAACCTGTGTGAATTCTGCTGATCCTGGTTTTTTCATGGTGCCTTTTTACATTGGC  
 TATTTTATTGTGAGCAATATCCGACTACTGCATAAACAACGACTGCTTTTTTCTGTCTCTTATGGCTGA  
 CCTTTATGATTTCTTCTGGAACTAGGAGATCCCTTTCCATTCTCAGCCAAAACATGGGATCTTATC  
 CATAGAACAGCTCATCAGCCGGTTGGTGTGATTGGAGTACTCTCATGGCTCTTCTTTCTGGATTTGGT  
 GCTGTCAACTGCCATACACTTACATGTCTTACTTCTCAGGAATGTGACTGACACGGATATTCTAGCCC  
 TGGAACGGCGACTGCTGCAAACCATGGATATGATCATAAGCAAAAAGAAAAGGATGGCAATGGCACGGAG  
 AACAAATGTTCCAGAAGGGGGAAGTGCATAACAAACCATCAGGTTTCTGGGAATGATAAAAAGTGTACC  
 ACTTCAGCATCAGGAAGTGAAAACTTACTCTTATTCAACAGGAAGTGGATGCTTTGGAAGAATTAGCA  
 GGCAGCTTTTTCTGAAAACAGCTGATCTATATGCTACCAAGGAGAGAATAGAATACTCCAAAACCTTCAA  
 GGGGAAATATTTTAAATTTCTTGTTACTTTTTCTCTATTTACTGTGTTTGGAAAATTTTCATGGCTACC  
 ATCAATATTGTTTTGATCGAGTTGGGAAAACGGATCCTGTCCACAAGAGGCATTGAGATCACTGTGAATT  
 ATCTGGGAATCCAATTTGATGTGAAGTTTTGGTCCCAACATTTCTTCATTCTGTGGGAATAATCAT  
 CGTCACATCCATCAGAGGATTGCTGATCACTCTACCAAGTCTTTTATGCCATCTTAGCAGTAAGTCC  
 TCCAATGTCATTGCTCTGCTATTAGCACAGATAATGGGCATGACTTTGTCTCCTCTGTGCTGCTGATCC  
 GAATGAGTATGCCTTTAGAATACCGCACCAATAACTGAAGTCTTGGAGAAGTGCAGTTCAACTTCTA  
 TCACCGTTGGTTTGTATGTATCTTCTGGTCAGCGCTCTCTAGCATACTCTTCTCTATTTGGCTCAC  
 AACAGGCACCAGAGAAGCAAATGGCACCT

**ACGCGT**ACGCGGCCGCTCGAGCAGAACTCATCTCAGAAGAGGATCTGGCAGCAAATGATATCCTGGATT  
 ACAAGGATGACGACGATAAGGTTTAA

**Protein Sequence:**

>RC221258 representing NM\_001097613  
 Red=Cloning site Green=Tags(s)

MRQLFKDYEIRQYVVQVIFSVTFAFSCTMFELIIFEILGVLNSSSRYPFHWMNLCVILLILVFMVPFYIG  
 YFIVSNIRLLHKQRLLFSCLLWLFMYFFWKLGDPPILSPKHGILSIEQLISRVGVIGVTLMALLSGFG  
 AVNCPYTYMSYFLRNVTDDILALERRLLQTMDMIISKKKRMAMARRTMFQKGEVHNKPSGFWGMIKSVT  
 TSASGSENLTLIQQEVDALEELSRQLFLETADLYATKERIEYSKTFKGYFNFLGYFFSIYCVWKIFMAT  
 INIVFDRVGKTDVPVTRGIEITVNYLGIQFDVKFWSQHISFILVGIIVTTSIRGLLITLTKFFYAISSSKS  
 SNVIVLLLAQIMGYFVSSVLLIRMSMPLEYRTIITEVLGELQFNFYHRWFDVIFLVSALSSILFLYLAH  
 KQAPEKQMAP

**TR**TRPLEQKLISEEDLAANDILDYKDDDDKV

**Chromatograms:**

[https://cdn.origene.com/chromatograms/ja1502\\_a10.zip](https://cdn.origene.com/chromatograms/ja1502_a10.zip)

**Restriction Sites:**

SgfI-MluI

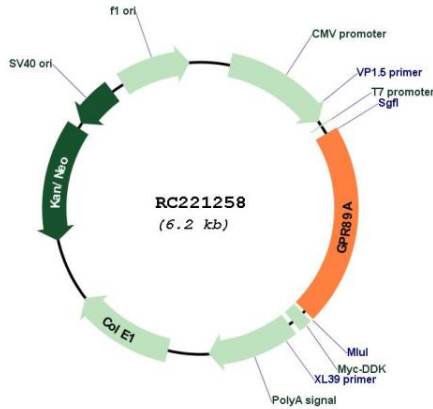


**Protein Families:** Druggable Genome, Transmembrane

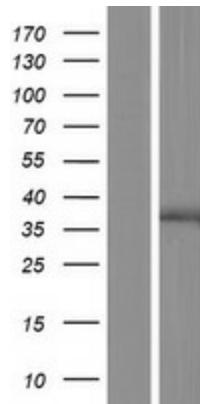
**MW:** 49.99 kDa

**Gene Summary:** GPR89A is a nearly identical copy of the GPR89B gene (MIM 612806).[supplied by OMIM, Jun 2009]

**Product images:**



Circular map for RC221258



Western blot validation of overexpression lysate (Cat# [LY420402]) using anti-DDK antibody (Cat# [TA50011-100]). Left: Cell lysates from untransfected HEK293T cells; Right: Cell lysates from HEK293T cells transfected with RC221258 using transfection reagent MegaTran 2.0 (Cat# [TT210002]).