

Product datasheet for RC221247

ABCC10 (NM_033450) Human Tagged ORF Clone

Product data:

Product Type: Expression Plasmids
Product Name: ABCC10 (NM_033450) Human Tagged ORF Clone
Tag: Myc-DDK
Symbol: ABCC10
Synonyms: EST182763; MRP7; SIMRP7
Mammalian Cell Selection: Neomycin
Vector: pCMV6-Entry (PS100001)
E. coli Selection: Kanamycin (25 ug/mL)
ORF Nucleotide Sequence: >RC221247 representing NM_033450
 Red=Cloning site Blue=ORF Green=Tags(s)

TTTTGTAATACGACTCACTATAGGGCGGCCGGAATTCGTCGACTGGATCCGGTACCGAGGAGATCTGCC
 GCC**CGATCGCC**

ATGTGCCCTCCTTGTCTTCCCCCTGTCCCCAGGAGTCCAGATTACATCCTACCCTGCAGTCTGGATGGC
 GCCTCCGACTTGCAGCTTCTTCTGCTTCCGTCTTCCCGTGTAGACCTTCTCCAGTTGCTTTGCC
 ACCAGGGCAGGCCAGGACCCATAGGGCTAGAGGTGTTGGCAGGGTGCCTGGCAGCTGTGGCCTGGATC
 AGCCACAGCCTGGCCCTGTGGTGTGGCACATCCCCCTCATGGCCACTCCCGGGTCCCTTGGCCTTGG
 CCCTGGTAGCCTTGTGCCAGCTCCAGCCCTAGTGTGACCGTGTGTGGCATTGCCAGCGAGGCACACT
 TCTGCCCCCACTTCTCCAGGGCCATGGCCCGCCTATGCTTGTCTCATCCTGCAGCTGGCTGCACCTTTG
 GCCTATGCACTGGGATGGGAGCTCCTGGGGACACGAGAACCCTGGGCTCAGGAGCCCTCCTGCCCG
 AGGATCAAGAACCTGAGGTGGCTGAAGATGGGGAGAGTTGGCTGTACGCTTTTCTATGCCTGGCTGGC
 ACCCTTGTGGCCGTGGGGCTGTGGAGAGCTCCGGCAGCCTCAGGACATTTGCCCGCTCCCCACAGA
 CTGCAGCCAACCTACCTGGCTCGTGTCTCCAGGCACACTGGCAGGAGGGGGCACGGCTGTGGAGGGCT
 TGTATGGGGCCTTTGGACGGTGTATCTGGCACTTGGACTGTGAAGCTGGTGGGACCATGTTGGGATT
 CTCAGGGCCCTGTTGCTCTCCCTACTGGTGGGCTTCTGGAAGAGGGGCAGGAGCCACTAAGCCACGGC
 CTGCTCTATGCTCTGGGCTAGCCGGTGGGCTGTGCTGGTGTGCTGCAGAATCAGTATGGGTATG
 AGGTATAAAGGTAACACTTCAGGCACGGGGGCTGTGCTGAACATCCTGTACTGAAGGCTTTACAGCT
 GGGGCCAGCCGCTCCTACTGGGAGGCCCTGAACCTACTAGGCACTGACTCTGAACGGCTGTTAAC
 TTTGCTGGGAGCTTCCATGAAGCCTGGGGCTGCCCTGCAACTGGCCATCACCTCTACCTGCTGTACC
 AGCAGGTAGGCGTGGCCTTCGTGGTGGTCTCATCTTGGCACTGCTGCTGGTACCCGCAACAAAGTGAT
 TGCCACCCGCATCATGGCCAGCAACCAGAAATGCTACAGCACAAGGATGCGCGGGTTAAGCTTGTGACA
 GAGCTGCTGAGTGGCATTGGGTATCAAGTTCTGCGGGTGGGAGCAGGCACTGGGAGCCCGAGTAGAGG
 CCTGCCGGCTCGAGAGCTGGGGCACTCCGGTATCAAAATACCTGGATGCGGCCTGTGTACCTGTG
 GGCTGCCCTACCGTTGTCATCTCCATCGTTATCTTACACCTATGTCCTCATGGGCACCAGCTCACT



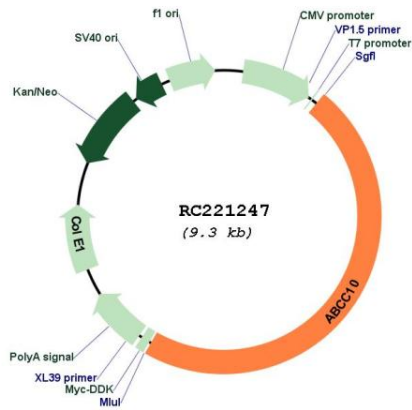
[View online >](#)

GCCACCAAGGTGTTACAGGCCCTGGCACTGGTGCGAATGCTCATTCTTCCTCTCAACAACCTCCCTTGGG
TGATCAATGGTCTCCTGGAGGCCAAAGTGTCTTGGACCGGATCCAGCTTTTCTCGACCTTCCAAACCA
CAACCCCAAGGCCTACTACAGCCAGATTGTGGTATAGATTAGGAGCCAAATCAAGTGGCTTCTGTTC
GATCCCCCTGCAGAGCCATCTACAGTATTGGAGCTGCATGGAGCCTTGTCTCCTGGGACCCAGTTGGAA
CCAGCCTGGAGACCTTCATCAGTATCTCGAAGTAAAAAGGGTATGCTGGTGGGCATCGTGGGGAAGGT
CGGCTGTGGGAAGAGCTCCCTGGCTGCCATCGCTGGAGAGCTCCACAGGCTGCGTGGGCATGTGGCA
GTGCGGGGGCTGTCCAAGGGCTTTGGCCTGGCCACCCAGGAACCCCTGGATCCAGTTTGGCCACCTCCG
ACAACATCCTCTTTGGGAAGACATTTGATGCACAGCTGTACAAGGAGGTGCTAGAAGCCTGCGCCCTCAA
TGATGACCTCAGTATCCTGCCTGCTGGAGACCAGACAGAGGTGGGGGAGAAGGGTGTACCCCTTAGCGGA
GGACAGCGTGCCCGGATTGCCCTTGGCTCGTGTCTACCAGGAAAAGGAGCTCTATCTCCTCGATGACC
CTCTGGCCGCTGTGGATGCAGATGTGGCAACCACCTGCTGCACAGGTGCATCCTGGGCATGCTGAGCTA
CACCACACGGCTGCTCTGACCCACCGCACTGAGTACCTGGAGAGGGCTGACGCGGTGCTGCTGATGGAG
GCCGGGCGCTCATCCGGCTGGACCTCCCTCTGAGATTCTGCCACTGGTACAAGCTGTCCCAAAGCCT
GGGCTGAGAATGGACAAGAGTCTGACTCAGCCACAGCCAGTCACTACAGAACCCAGAGAAAACAAAGGA
GGGGCTGGAGGAGGAGCAGAGCACATCTGGTCGCCTGCTCAGGAAGAAAGCAAGAAGGAGGGCGCCGTG
GCCTTGACAGTGTACCAAGCTTACTGGAAGGCCGTGGGCCAGGGCTTGGCCTTAGCCATCCTCTCTCTC
TGCTTCTCATGAAGCCACGCGGAACGCTGCTGACTGGTGGCTCTCCACTGGATCTCTCAGCTGAAGGC
TGAGAATAGTCCCAGGAGGCGCAACCCTCCACCAGCCAGCTTCTATGGGGCTCTTCTCTCCGAGCTG
CTCCTCTTTCCCTGGAAACCTCTACATCCCAGTGTCCCACTGCCAAAGCTGCCCAATGGCTCCT
CAGACATCCGTTTCTACCTACCGTGTATGCGACCATTGCTGGTGTAAATCCCTCTGCACCCTTCTCCG
GGCAGTGTCTTTGCAGCAGGCACCTTCAAGCAGCTGCCACTCTGCATCGCCGCTGCTGCATCGAGTC
CTTATGGCACCAGTGACTTTCTCAATGCCACACCCACGGCCGGATCCTAAACCGCTTCTCCTCTGATG
TGGCTGTGCGGATGACAGCCTGCCCTTCACTCAACATCCTCTGGCCAACGCGGCAGCCTGTGTTGG
GCTCCTGGCCGTGCTGGGCTCTGGCCTGGCCTGGCTGCTCCTGCTGCCGCTTTGAGCATCATGTAC
TATCACGTGCAGCGCCTACAGGGCCTCCTCACGGGAGCTGCGGCGCCTGGGCAGCCTCACCTGTCTC
CACTGTATAGCCATCTGGCCGATACCTTGGCTGGCCTCTCTGTGCTCCGGGCCACAGGGGCCACCTACAG
GTTTGAGGAGGAGAACCTGCGACTCCTTGGCTAAACCAGAGGTGCCAGTTTGGCACCAGTGCCACAATG
CAGTGGCTGGACATTGGCTACAGCTCATGGGGCGGCAGTGGTCAAGCCTATCGCAGGCATCGCTCTGG
TGCAGCACCAGCAGGGCCTCGCTAACCCAGGGCTGGTGGGCTTGTGCTGCTTATGCCCTGTCCCTGAC
GGGCTGCTCTCGGGCCTGGTGGCAGCTTACACAGACAGAGGCCATGCTGGTGGAGCGTGGAGCGGCTG
GAAGAGTACACCTGTGACCTGCCCCAGGAACCCAGGGCCAGCCACTGCAGCTGGGCACCGGCTGGCTGA
CCCAGGGGGCGTGGAGTTCAGGACGTGGTGTGGCGTACCGGCCAGGGCTGCCGAATGCCCTGGATGG
AGTGACCTTCTGCGTGCAGCCTGGAGAGAAGTTGGGCATCGTGGGCCGCACAGGCTCCGGCAAGTCTTCC
CTGTTGTTGGTGTCTTCCGGCTGCTAGAGCCAGTTCAGGGCGAGTGTGCTGGACGGCGTGGACACCA
GCCAGCTGGAGCTGGCCAGCTCAGATCCCAGTTGGCTATCATCCCCAGGAGCCCTTTTGTTCAGTGG
GACTGTTCCGGAAAACCTGGACCCCAAGGGCTACATAAGGACAGGGCCTTGTGGCAGGCCCTGAAGCAG
TGCCACCTGAGTGGGTGATTACATCCATGGGTGGTCTGGATGGTGGAGCTGGGTGAGGGGGCGGAGCT
TATCTCTTGGGCAGAGCAGCTGTTGTGTTGGCCAGGGCTCTCCTCACAGATGCCAAGATCCTGTGTAT
GCCAACAAAGACAGTGTGACCATTTGCCATAGGCTCAACACGATCCTGAACTCAGACCGGGTGTGGTGC
TACAAGCGGGGAGAGTGGTAGAGCTGGACTCCCGGCCACCTGCGCAACCAGCCCCACTCCCTGTTCCA
GCAGCTGCTGCAGAGCAGCCAGCAGGGAGTCCCTGCCTCACTCGGAGGTCCC

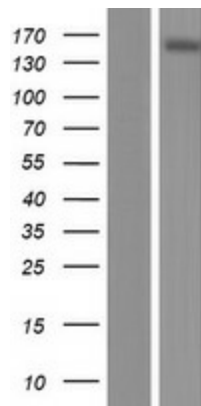
ACGCGTACGCGGGCCGCTCGAGCAGAACTCATCTCAGAAGAGGATCTGGCAGCAATGATATCCTGGATT
ACAAGGATGACGACGATAAGGTTTAA

OTI Disclaimer:	The molecular sequence of this clone aligns with the gene accession number as a point of reference only. However, individual transcript sequences of the same gene can differ through naturally occurring variations (e.g. polymorphisms), each with its own valid existence. This clone is substantially in agreement with the reference, but a complete review of all prevailing variants is recommended prior to use. More info
OTI Annotation:	This clone was engineered to express the complete ORF with an expression tag. Expression varies depending on the nature of the gene.
Components:	The ORF clone is ion-exchange column purified and shipped in a 2D barcoded Matrix tube containing 10ug of transfection-ready, dried plasmid DNA (reconstitute with 100 ul of water).
Reconstitution Method:	<ol style="list-style-type: none">1. Centrifuge at 5,000xg for 5min.2. Carefully open the tube and add 100ul of sterile water to dissolve the DNA.3. Close the tube and incubate for 10 minutes at room temperature.4. Briefly vortex the tube and then do a quick spin (less than 5000xg) to concentrate the liquid at the bottom.5. Store the suspended plasmid at -20°C. The DNA is stable for at least one year from date of shipping when stored at -20°C.
RefSeq:	NM_033450.2 , NP_258261.2
RefSeq Size:	5118 bp
RefSeq ORF:	4395 bp
Locus ID:	89845
UniProt ID:	Q5T3U5
Cytogenetics:	6p21.1
Protein Families:	Druggable Genome, Transmembrane
Protein Pathways:	ABC transporters
MW:	158.6 kDa
Gene Summary:	The protein encoded by this gene is a member of the superfamily of ATP-binding cassette (ABC) transporters. ABC proteins transport various molecules across extra- and intra-cellular membranes. ABC genes are divided into seven distinct subfamilies (ABC1, MDR/TAP, MRP, ALD, OABP, GCN20, and White). This ABC full-transporter is a member of the MRP subfamily which is involved in multi-drug resistance. Multiple transcript variants encoding different isoforms have been found for this gene.[provided by RefSeq, Nov 2010]

Product images:



Circular map for RC221247



Western blot validation of overexpression lysate (Cat# [LY409514]) using anti-DDK antibody (Cat# [TA50011-100]). Left: Cell lysates from untransfected HEK293T cells; Right: Cell lysates from HEK293T cells transfected with RC221247 using transfection reagent MegaTran 2.0 (Cat# [TT210002]).