

Product datasheet for **RC221242**

ZNF707 (NM_001100598) Human Tagged ORF Clone

Product data:

Product Type:	Expression Plasmids
Product Name:	ZNF707 (NM_001100598) Human Tagged ORF Clone
Tag:	Myc-DDK
Symbol:	ZNF707
Mammalian Cell Selection:	Neomycin
Vector:	pCMV6-Entry (PS100001)
E. coli Selection:	Kanamycin (25 ug/mL)
ORF Nucleotide Sequence:	>RC221242 ORF sequence Red=Cloning site Blue=ORF Green=Tags(s)

TTTTGTAATACGACTCACTATAGGGCGGCCGGAATTCGTCGACTGGATCCGGTACCGAGGAGATCTGCC
GCC**CGATCGCC**

ATGGCCCAGGAGCCAGTGACCTTCAGGGACGTGGCCATCTACTTCTCAAGGGAGGAGTGGGCGTGTCTGG
AACCCAGCCAGAGGGCCCTCTACCGGGACGTGATGCTGGACAACCTCAGCAGTGTGGCTGCTCTGGGATT
TTGCAGCCCCAGACCAGACCTCGTCTCTCGCTGGAACAGTGGGAGGAGCCGTGGGTTGAAGACCGGGAG
AGACCTGAGTTCAGGCAGTGCAGAGGGGACCCCGCCAGGGGCAAGGAAGTCTGCAGACCCCAAGAGAC
ATTGTGATCATCCAGCTTGGGCTACAAGAAAACCCAGTGCGGCGAGAAAGCCAGGGAAGGAAGCAGC
CTTTAGGAAGGGCTTCAGGCTGGACACGGATGACGGGCAGCTTCCAGAGCTGCTCCAGAAAGACAGAC
GCCAAGCCCACGGCTTCCCGTGTGAGGTGCTCACGCAGCGTTGTGGCGGCGCCGGCCGAGAGAGC
GCCGGAAGCAGCGCGCAGTAGAGCTGTCGTTTCATCTGCGGCACGTGCGGGAAGGCGCTCAGCTGCCACAG
CCGGCTGCTCGCTCACCAGACGGTGCACACGGGAACCAAGGCCTTCGAGTGCCCCGAGTGCAGCCAGACC
TTCCGGTGGGCTTCAAACCTGCAGCGCCACCAGAAGAACCACACGCGGAGAAAGCCCTTCTGCTGCGAGG
CCTGCGGGCAGGCGTTCAGCCTGAAGGACCGCCTGGCTCAGCACCAGGTCACACCGAGCACAGGCC
CTACTCGTGTGGCGACTGTGGGAAAGCCTTCAAGCAGAAGTCAAACCTTCTCAGACACCAGCTGGTGCAC
ACCGGGGAGCGCGCTTCTACTGCGGGACTGCGGCAAAGCCTTCCGGACCAAGGAGAACCTCAGCCACC
ACCAGAGGGTCCACAGCGGGGAGAAGCCCTACACCTGTGCCGAGTGCAGCAAGTCCCTCCGGTGGCCCAA
GGGCTTACGATCCACCGGAGGCTGCACCTGACGAAGAGGTTCTACGAGTGCAGGCACTGTGGGAAAGGC
TTCCGTCACTGGGGTTCTTACGCGGCATCAGAGGACTCACAGGCACGGGGAGGTG

ACGCGTACGCGGCCGCTCGAGCAGAACTCATCTCAGAAGAGGATCTGGCAGCAAATGATATCCTGGATT
ACAAGGATGACGACGATAAGGTTTAA



[View online »](#)

Protein Sequence: >RC221242 protein sequence
Red=Cloning site Green=Tags(s)

MAQEPVTRFDVAIYFSREEWACLEPSQRALYRDVMLDNFSSVAALGFCSPRPDLVSRLEQWEEPWVEDRE
 RPEFQAVQRGPRPGARKSADPKRHCDHPAWAHKKTHVRRERAREGSSFRKGFRLDTDDGQLPRAAPERTD
 AKPTAFPCQVL TQRCGRPRGRERRRQRAVELSFICGTGKALSCHSRLLAHQTVHTGTAFECPECGQT
 FRWASNLQRHQKNHTREKPFCEACGQAFSLKDRLAQHRKVHTEHRPYSCGDCGKAFKQKSNLLRHQLVH
 TGERPFYCADCGKAFRTKENLSHHQRVHSGEKPYTCAECGKSFWRWPKGFSIHRRLHLTKRFYECGHCGKG
 FRHLGFFTRHQTRHRGVEV

TRTRPLEQKLISEEDLAANDILDYKDDDDKV

Chromatograms: https://cdn.origene.com/chromatograms/mk6539_e12.zip

Restriction Sites: SgfI-MluI

Cloning Scheme:

Cloning sites used for ORF Shuttling:



* The last codon before the Stop codon of the ORF

ACCN: NM_001100598

ORF Size: 1107 bp

OTI Disclaimer: The molecular sequence of this clone aligns with the gene accession number as a point of reference only. However, individual transcript sequences of the same gene can differ through naturally occurring variations (e.g. polymorphisms), each with its own valid existence. This clone is substantially in agreement with the reference, but a complete review of all prevailing variants is recommended prior to use. [More info](#)

OTI Annotation: This clone was engineered to express the complete ORF with an expression tag. Expression varies depending on the nature of the gene.

Components: The ORF clone is ion-exchange column purified and shipped in a 2D barcoded Matrix tube containing 10ug of transfection-ready, dried plasmid DNA (reconstitute with 100 ul of water).

Reconstitution Method:

1. Centrifuge at 5,000xg for 5min.
2. Carefully open the tube and add 100ul of sterile water to dissolve the DNA.
3. Close the tube and incubate for 10 minutes at room temperature.
4. Briefly vortex the tube and then do a quick spin (less than 5000xg) to concentrate the liquid at the bottom.
5. Store the suspended plasmid at -20°C. The DNA is stable for at least one year from date of shipping when stored at -20°C.

RefSeq: [NM_001100598.1](#), [NP_001094068.1](#)

RefSeq Size: 2228 bp

RefSeq ORF: 1116 bp

Locus ID: 286075

UniProt ID: [Q96C28](#)

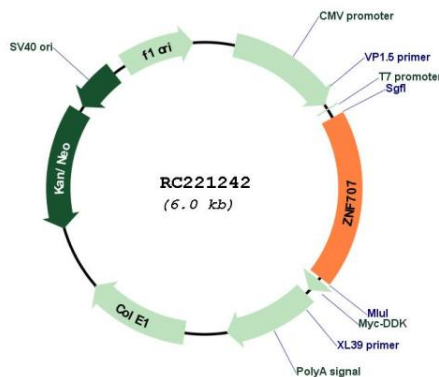
Cytogenetics: 8q24.3

Protein Families: Transcription Factors

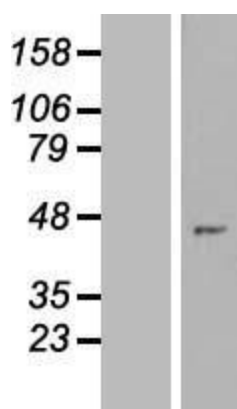
MW: 42.9 kDa

Gene Summary: May be involved in transcriptional regulation.[UniProtKB/Swiss-Prot Function]

Product images:



Circular map for RC221242



Western blot validation of overexpression lysate (Cat# [LY420277]) using anti-DDK antibody (Cat# [TA50011-100]). Left: Cell lysates from untransfected HEK293T cells; Right: Cell lysates from HEK293T cells transfected with [RC221291] using transfection reagent MegaTran 2.0 (Cat# [TT210002]).