

## Product datasheet for RC221234

### CCR2 (NM\_000647) Human Tagged ORF Clone

#### Product data:

Product Type:	Expression Plasmids
Product Name:	CCR2 (NM_000647) Human Tagged ORF Clone
Tag:	Myc-DDK
Symbol:	CCR2
Synonyms:	CC-CKR-2; CCR2A; CCR2B; CD192; CKR2; CKR2A; CKR2B; CMKBR2; MCP-1-R
Mammalian Cell Selection:	Neomycin
Vector:	pCMV6-Entry (PS100001)
E. coli Selection:	Kanamycin (25 ug/mL)
ORF Nucleotide Sequence:	>RC221234 ORF sequence Red=Cloning site Blue=ORF Green=Tags(s)

TTTTGTAATACGACTCACTATAGGGCGGCCGGAATTCGTCGACTGGATCCGGTACCGAGGAGATCTGCC  
GCC**CGATCGCC**

ATGCTGTCCACATCTCGTTCTCGGTTTATCAGAAATACCAACGAGAGCGGTGAAGAAGTCACCACCTTTT  
TTGATTATGATTACGGTGTCCCTGTCTATAAATTTGACGTGAAGCAAATGGGGCCCACTCCTGCCTCC  
GCTCTACTCGCTGGTGTTCATCTTTGGTTTTGTGGCAACATGCTGGTCGTCCTCATCTTAATAAAGTCG  
AAAAAGCTGAAGTCTTGACTGACATTTACCTGCTCAACCTGGCCATCTCTGATCTGCTTTTTCTTATTA  
CTCTCCCATTGTGGGCTCACTCTGCTGCAAATGAGTGGTCTTTGGGAATGCAATGTGCAAATTATTCAC  
AGGGCTGTATCAGATCGTTATTTGGCGAATCTTCTTCATCATCCTCCTGACAATCGATAGATACCTG  
GCTATTGTCCATGCTGTGTTTGCTTTAAAAGCCAGGACGGTCACCTTTGGGGTGGTGACAAGTGTGATCA  
CCTGGTTGGTGGCTGTGTTGCTTCTGTCCCAGGAATCATCTTTACTAAATGCCAGAAAGAAGATTCTGT  
TTATGTCTGTGGCCCTTATTTCCACGAGGATGGAATAATTTCCACACAATAATGAGGAACATTTGGGG  
CTGGTCTGCCGCTGCTCATCATGGTCATCTGCTACTCGGAATCCTGAAAACCTGCTTCGGTGTGCAA  
ACGAGAAGAAGAGGCATAGGGCAGTGAGAGTCATCTTACCATCATGATTGTTTACTTTCTTCTTCTGGAC  
TCCCTATAATATTGTCATTCTCCTGAACACCTTCCAGGAATCTTCGGCCTGAGTAACTGTGAAAGCACC  
AGTCAACTGGACCAAGCCAGCAGGTGACAGAGACTCTTGGGATGACTCACTGTCATCAATCCCACATCA  
TCTATGCCTTCGTTGGGAGAAGTTCAGAAGCCTTTTTACATAGCTCTTGGCTGTAGGATTGCCCCACT  
CCAAAAACCAGTGTGTGGAGTCCAGGAGTGAGACCAGGAAAGAATGTGAAAGTACTACACAAGGACTC  
CTCGATGGTCTGGAAAAGGAAAGTCAATTGGCAGAGCCCTGAAAGCAGTCTTCAGGACAAAGAAGGAG  
CC

**ACGCGT**ACGCGGCCGCTCGAGCAGAAACTCATCTCAGAAGAGGATCTGGCAGCAAATGATATCCTGGATT  
ACAAGGATGACGACGATAAGGTTTAA



[View online »](#)



**Reconstitution Method:**

1. Centrifuge at 5,000xg for 5min.
2. Carefully open the tube and add 100ul of sterile water to dissolve the DNA.
3. Close the tube and incubate for 10 minutes at room temperature.
4. Briefly vortex the tube and then do a quick spin (less than 5000xg) to concentrate the liquid at the bottom.
5. Store the suspended plasmid at -20°C. The DNA is stable for at least one year from date of shipping when stored at -20°C.

**RefSeq:** [NM\\_000647.3](#), [NP\\_000638.1](#)

**RefSeq Size:** 2689 bp

**RefSeq ORF:** 1124 bp

**Locus ID:** 1231

**Cytogenetics:** 3p21.31

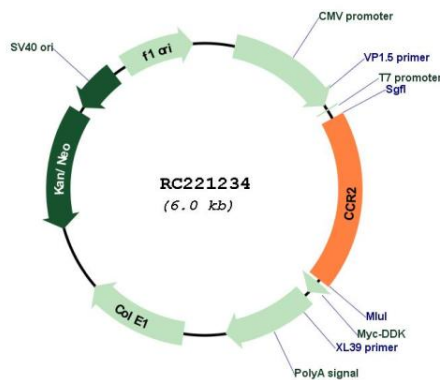
**Domains:** 7tm\_1

**Protein Families:** Druggable Genome, GPCR, Transmembrane

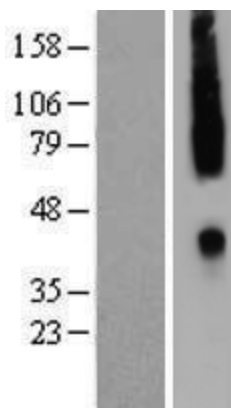
**MW:** 41.9 kDa

**Gene Summary:** This gene encodes two isoforms of a receptor for monocyte chemoattractant protein-1, a chemokine which specifically mediates monocyte chemotaxis. Monocyte chemoattractant protein-1 is involved in monocyte infiltration in inflammatory diseases such as rheumatoid arthritis as well as in the inflammatory response against tumors. The receptors encoded by this gene mediate agonist-dependent calcium mobilization and inhibition of adenylyl cyclase. This gene is located in the chemokine receptor gene cluster region. Two alternatively spliced transcript variants are expressed by the gene. [provided by RefSeq]

### Product images:



Circular map for RC221234



Western blot validation of overexpression lysate (Cat# [LY424596]) using anti-DDK antibody (Cat# [TA50011-100]). Left: Cell lysates from untransfected HEK293T cells; Right: Cell lysates from HEK293T cells transfected with RC221234 using transfection reagent MegaTran 2.0 (Cat# [TT210002]).