

Product datasheet for RC221233

SYTL2 (NM_206930) Human Tagged ORF Clone

Product data:

Product Type:	Expression Plasmids
Product Name:	SYTL2 (NM_206930) Human Tagged ORF Clone
Tag:	Myc-DDK
Symbol:	SYTL2
Synonyms:	CHR11SYT; EXO4; PPP1R151; SGA72M; SLP2; SLP2A
Mammalian Cell Selection:	Neomycin
Vector:	pCMV6-Entry (PS100001)
E. coli Selection:	Kanamycin (25 ug/mL)
ORF Nucleotide Sequence:	>RC221233 representing NM_206930 Red=Cloning site Blue=ORF Green=Tags(s)

TTTTGTAATACGACTCACTATAGGGCGGCCGGAATTCGTCGACTGGATCCGGTACCGAGGAGATCTGCC
GCC**CGATCGCC**

ATGAGTGATGACAGAGAAACAGATACAGCATCAGAAAGCAGTTACCAGCTCAGCAGACACAAGAAGAGCC
CGAGCTCTTTAACCAATCTTAGCAGCTCCTCTGGCATGACGTCTTGTCTTCTGTGAGTGGCAGTGTGAT
GAGTGTATAGTGGAGACTTTGGCAATCTGGAAGTTAAAGGAAATATTCAGTTTGAATTGAATATGTG
GAGTCACTGAAGGAGTTGCATGTTTTTGTGGCCAGTGAAGGACTTAGCAGCAGCGGATGAAAAAAC
AGCGTTCAGACCCATATGTAAGGCCTATTTGCTACCAGACAAAGGCAAAATGGGCAAGAAGAAAACACT
CGTAGTGAAGAAAACCTTGAATCCTGTGTATAACGAAATACTGCGGTATAAAATTGAAAAACAAATCTTA
AAGACACAGAAATTGAACCTGTCCATTTGGCATCGGGATACATTTAAGCGCAATAGTTTCTAGGGGAGG
TGGAACTTGATTTGGAACATGGGACTGGGATAACAAACAGAATAAACAATTGAGATGGTACCCTCTGAA
GCGGAAGACAGCACCAGTTGCCCTTGAAGCAGAAAACAGAGGTGAAATGAAACTAGCTCTCCAGTATGTC
CCAGAGCCAGTCCCTGGTAAAAAGCTTCTACAACCTGGAGAAGTGACATCTGGGTGAAGGAATGCCTTG
ATCTACCAGTCTAAGGGGAAGTCATCTAAATCTTTTGTAAATGTACCATCTTCCAGATACAAGTAG
GAAAAGTCGCCAGAAGACAAGAGCTGTAGGAAAACCAACCCATCTTCAACCACACTATGGTGTAT
GATGGTTTCAGGCCTGAAGATCTGATGGAAGCCTGTGTAGAGCTTACTGTCTGGGACCATTACAATTA
CCAACCAATTTTGGGAGGTCTTCGTATTGGCTTTGGAACAGGTAAGTTATGGGACTGAAGTGGACTG
GATGGACTCTACTTCAGAGGAAGTTGCTCTCTGGGAGAAGATGGTAAACTCCCCAATACTTGGATTGAA
GCAACACTGCCTCTCAGAATGCTTTTGATTGCCAAGATTTCCAAA

ACGCGTACGCGGCCGCTCGAGCAGAAACTCATCTCAGAAGAGGATCTGGCAGCAATGATATCCTGGATT
ACAAGGATGACGACGATAAGGTTAA



[View online »](#)

Reconstitution Method:

1. Centrifuge at 5,000xg for 5min.
2. Carefully open the tube and add 100ul of sterile water to dissolve the DNA.
3. Close the tube and incubate for 10 minutes at room temperature.
4. Briefly vortex the tube and then do a quick spin (less than 5000xg) to concentrate the liquid at the bottom.
5. Store the suspended plasmid at -20°C. The DNA is stable for at least one year from date of shipping when stored at -20°C.

RefSeq: [NM_206930.3](#), [NP_996813.1](#)

RefSeq Size: 2450 bp

RefSeq ORF: 1098 bp

Locus ID: 54843

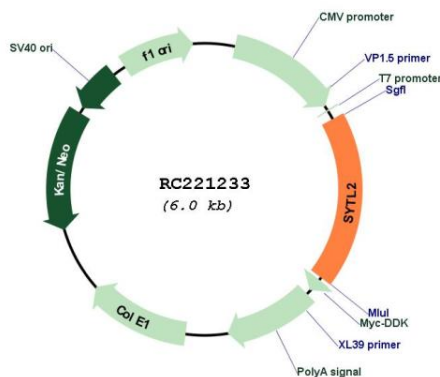
UniProt ID: [Q9HCH5](#)

Cytogenetics: 11q14.1

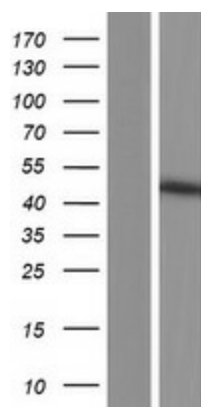
MW: 41.4 kDa

Gene Summary: The protein encoded by this gene is a synaptotagmin-like protein (SLP) that belongs to a C2 domain-containing protein family. The SLP homology domain (SHD) of this protein has been shown to specifically bind the GTP-bound form of Ras-related protein Rab-27A (RAB27A). This protein plays a role in RAB27A-dependent vesicle trafficking and controls melanosome distribution in the cell periphery. Alternative splicing results in multiple transcript variants encoding distinct isoforms.[provided by RefSeq, Jun 2009]

Product images:



Circular map for RC221233



Western blot validation of overexpression lysate (Cat# [LY404178]) using anti-DDK antibody (Cat# [TA50011-100]). Left: Cell lysates from untransfected HEK293T cells; Right: Cell lysates from HEK293T cells transfected with RC221233 using transfection reagent MegaTran 2.0 (Cat# [TT210002]).