

Product datasheet for **RC221229**

CCT3 (NM_005998) Human Tagged ORF Clone

Product data:

Product Type:	Expression Plasmids
Product Name:	CCT3 (NM_005998) Human Tagged ORF Clone
Tag:	Myc-DDK
Symbol:	CCT3
Synonyms:	CCT-gamma; CCTG; PIG48; TCP-1-gamma; TRIC5
Mammalian Cell Selection:	Neomycin
Vector:	pCMV6-Entry (PS100001)
E. coli Selection:	Kanamycin (25 ug/mL)



[View online »](#)

ORF Nucleotide Sequence:

>RC221229 representing NM_005998
 Red=Cloning site Blue=ORF Green=Tags(s)

TTTTGTAATACGACTCACTATAGGGCGGCCGGAATTCGTCGACTGGATCCGGTACCGAGGAGATCTGCC
 GCC**CGGATCGCC**

ATGATGGGCCATCGTCCAGTGCTCGTGCTCAGCCAGAACAAGCGTGAATCCGGAAGAAAAGTTCAAT
 CTGGAAACATCAATGCTGCCAAGACTATTGCAGATATCATCCGAACATGTTTGGGACCCAAGTCCATGAT
 GAAGATGCTTTTGGACCAATGGGAGGCATTGTGATGACCAATGATGGCAATGCCATTCTTCGAGAGATT
 CAAGTCCAGCATCCAGCGGCCAAGTCCATGATCGAAATTAGCCGGACCCAGGATGAAGAGTTGGAGATG
 GGACCACATCAGTAATTATTCTTGCAGGGGAAATGCTGTCTGTAGCTGAGCACTTCTGGAGCAGCAGAT
 GCACCCAACAGTGGTATCAGTGCTTACCGAAGGCATTGGATGATATGATCAGCACCTAAAGAAAATA
 AGTATCCCAGTCGACATCAGTGACAGTGATATGATGCTGAACATCATCAACAGCTCTATTACTACCAAAG
 CCATCAGTCGGTGGTATCTTTGGCTTGAACATTGCCCTGGATGCTGTCAAGATGGTACAGTTTGAGGA
 GAATGGTCGGAAGAGATTGACATAAAAAAATATGCAAGAGTGGAAAAGATACCTGGAGGCATCATTGAA
 GACTCCTGTGTCTTGCCTGGAGTCATGATTAACAAGGATGTGACCCATCCACGTATGCGGCGCTATATCA
 AGAACCTCGCATTGTGCTGCTGGATTCTTCTCTGGAATACAAGAAAGGAAAGCCAGACTGACATTGA
 GATTACACGAGAGGAGGACTTCACCCGAATTCTCCAGATGGAGGAAGAGTACATCCAGCAGCTCTGTGAG
 GACATTATCCAAGTGAAGCCCGATGTGGTCATCACTGAAAAGGGCATCTCAGATTTAGCTCAGCACTACC
 TTATGCGGGCCAATATCACAGCCATCCGCAGAGTCGGAAGACAGACAATAATCGCATTGCTAGAGCCTG
 TGGGGCCCGGATAGTCAGCCGACCAGAGGAAGTGAAGAGATGATGTTGGAACAGGAGCAGGCCTGTTG
 GAAATCAAGAAAATTGGAGATGAATACTTTACTTTTCACTACTGACTGCAAAGACCCCAAGGCCTGCACCA
 TTCTCCTCCGGGGGCTAGCAAAGAGATTCTCTCGGAAGTAGAAGCAACCTCCAGGATGCCATGCAAGT
 GTGTGCAATGTTCTCCTGGACCCTCAGCTGGTGCAGGGGTGGGGCCTCCGAGATGGCTGTGGCCCAT
 GCCTTGACAGAAAATCCAAGGCCATGACTGGTGTGGAACAATGGCCATACAGGGCTGTTGCCAGGCC
 TAGAGGTCATTCTCGTACCCTGATCCAGAAGTGTGGGCCAGCACCATCCGTCTACTTACCTCCCTTCG
 GGCCAAGCACACCAGGAGAAGTGTGAGACCTGGGGTGTAAATGGTGAAGCAGGACTTTGGTGGACATG
 AAGGAAGTGGGCATATGGGAGCCATTGGCTGTGAAGCTGCAGACTTATAAGACAGCAGTGGAGACGGCAG
 TTCTGCTACTGCGAATTGATGACATCGTTTCAGGCCACAAAAGAAAGGCGATGACCAGAGCCGGCAAGG
 CGGGGCTCCTGATGCTGGCCAGGAG

ACGCGTACGCGGCCGCTCGAGCAGAAACTCATCTCAGAAGAGGATCTGGCAGCAAATGATATCCTGGATT
 ACAAGGATGACGACGATAAGGTTTAA

Protein Sequence:

>RC221229 representing NM_005998
 Red=Cloning site Green=Tags(s)

MMGHRPVLVLSQNTKRESGRKVSQGNINAAKTIADIIRTCLGPKSMMKMLLDPMGGIVMTNDGNAILREI
 QVQHPAAKSMIEISRTQDEEVGDGTTSVIILAGEMLSVAEHFLEQQMHPTVVISAYRKALDDMISTLKKI
 SIPVDISDSDMMLNIINSSITTKAISRWSSLACNIALDAVKMVQFEENGRKEIDIKKYARVEKIPGGIIE
 DSCVLRGVMINKDVTHPRMRYIKNPRIVLLDSSLEYKKGESQTDIEITREEDFRILQMEEEYIQQLCE
 DIIQLKPDVVITEKISDLAQHYLMRANITAIRVRKTDNNRIARACGARIVSRPEELREDDVGTGAGLL
 EIKKIGDEYFTFITDCKDPKACTILLRGASKEILSEVERNLDAMQVCRNVLLDPQLVPGGGASEMAVAH
 ALTEKSKAMTGVEQWPYRAVAQALEVIPRTLIQNCGASTIRLLTSLRAKHTQENCETWGVNGETGLVDM
 KELGIWEPLAVKLQTYKTAVETAVLLLRIDDIVSGHKKKGDDQSRQGGAPDAGQE

TRTRPLEQKLISEEDLAANDILDYKDDDDKV

Chromatograms:

https://cdn.origene.com/chromatograms/mk6238_c05.zip

Restriction Sites:

Sgfl-Mlul

Cloning Scheme:


ACCN: NM_005998

ORF Size: 1635 bp

OTI Disclaimer: Due to the inherent nature of this plasmid, standard methods to replicate additional amounts of DNA in E. coli are highly likely to result in mutations and/or rearrangements. Therefore, OriGene does not guarantee the capability to replicate this plasmid DNA. Additional amounts of DNA can be purchased from OriGene with batch-specific, full-sequence verification at a reduced cost. Please contact our customer care team at custsupport@origene.com or by calling 301.340.3188 option 3 for pricing and delivery.

The molecular sequence of this clone aligns with the gene accession number as a point of reference only. However, individual transcript sequences of the same gene can differ through naturally occurring variations (e.g. polymorphisms), each with its own valid existence. This clone is substantially in agreement with the reference, but a complete review of all prevailing variants is recommended prior to use. [More info](#)

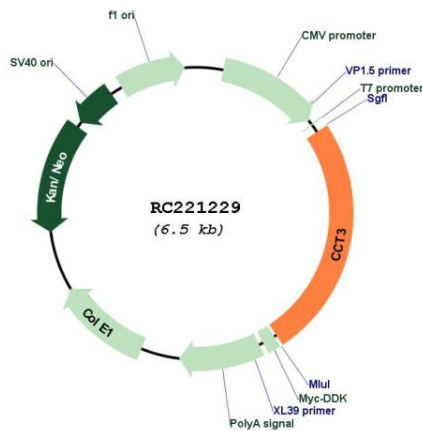
OTI Annotation: This clone was engineered to express the complete ORF with an expression tag. Expression varies depending on the nature of the gene.

Components: The ORF clone is ion-exchange column purified and shipped in a 2D barcoded Matrix tube containing 10ug of transfection-ready, dried plasmid DNA (reconstitute with 100 ul of water).

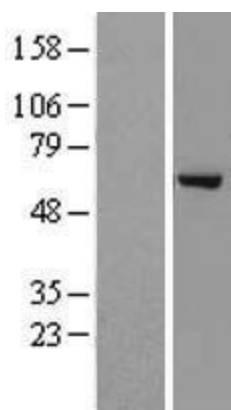
- Reconstitution Method:**
1. Centrifuge at 5,000xg for 5min.
 2. Carefully open the tube and add 100ul of sterile water to dissolve the DNA.
 3. Close the tube and incubate for 10 minutes at room temperature.
 4. Briefly vortex the tube and then do a quick spin (less than 5000xg) to concentrate the liquid at the bottom.
 5. Store the suspended plasmid at -20°C. The DNA is stable for at least one year from date of shipping when stored at -20°C.

Note:	Plasmids are not sterile. For experiments where strict sterility is required, filtration with 0.22um filter is required.
RefSeq:	NM_005998.5
RefSeq Size:	2096 bp
RefSeq ORF:	1638 bp
Locus ID:	7203
UniProt ID:	P49368
Cytogenetics:	1q22
Domains:	cpn60_TCP1
MW:	60.4 kDa
Gene Summary:	The protein encoded by this gene is a molecular chaperone that is a member of the chaperonin containing TCP1 complex (CCT), also known as the TCP1 ring complex (TRiC). This complex consists of two identical stacked rings, each containing eight different proteins. Unfolded polypeptides enter the central cavity of the complex and are folded in an ATP-dependent manner. The complex folds various proteins, including actin and tubulin. Alternate transcriptional splice variants have been characterized for this gene. In addition, a pseudogene of this gene has been found on chromosome 8. [provided by RefSeq, Aug 2010]

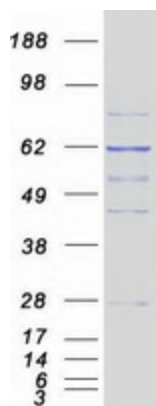
Product images:



Circular map for RC221229



Western blot validation of overexpression lysate (Cat# [LY416943]) using anti-DDK antibody (Cat# [TA50011-100]). Left: Cell lysates from untransfected HEK293T cells; Right: Cell lysates from HEK293T cells transfected with RC221229 using transfection reagent MegaTran 2.0 (Cat# [TT210002]).



Coomassie blue staining of purified CCT3 protein (Cat# [TP321229]). The protein was produced from HEK293T cells transfected with CCT3 cDNA clone (Cat# RC221229) using MegaTran 2.0 (Cat# [TT210002]).