

Product datasheet for RC221228

C2CD4A (NM_207322) Human Tagged ORF Clone

Product data:

Product Type:	Expression Plasmids
Product Name:	C2CD4A (NM_207322) Human Tagged ORF Clone
Tag:	Myc-DDK
Symbol:	C2CD4A
Synonyms:	FAM148A; NLF1
Mammalian Cell Selection:	Neomycin
Vector:	pCMV6-Entry (PS100001)
E. coli Selection:	Kanamycin (25 ug/mL)
ORF Nucleotide Sequence:	>RC221228 representing NM_207322 Red=Cloning site Blue=ORF Green=Tags(s)

TTTTGTAATACGACTCACTATAGGGCGGCCGGAATTCGTCGACTGGATCCGGTACCGAGGAGATCTGCC
GCC**CGATCGCC**

ATGTGGTGCCTGGAGCGACTCCGCTTGGGTCTGAGTGCCTTCGGCGGAGCGGAGACTGGCTTCTCCCGG
GTCGGGCCCGGAGCCAAGTCTCGACCACCGCCGCGTGCACAAATGTGCTCACTCCGGACCGCATCCC
TGAGTTCTGCATCCCGCCACGGCTCATGCCCGCCTGGCCTTGGCTGCGCTCCGGAATCTTGGGTGAA
GAAGCAGGGATGGACGAGGGCGCCGCGCACAGACTGGGACCCGCGCTCGCAGGCCGCGCTGTCAGTGC
CGCACCTGCCCGTGTGCGCACCGCTACGGCTTCTGCGCGCTGCTCGAGAGCCCGCACACGCGCCGCAA
GGAGTCGCTCCTGCTCGGGGGCCCGCCGCGCCCGGGCCACACCTACGGCGGCGGCGCGCGC
CCGGACGCCCTCCTGGGGACCCTGCGCGTCCCGCGAGCTCCGGGCCCGGGACCCCGCGGCCCGGGCT
GTCCCGCCCGCCAGGACGCGCTCGCCCGCGGCGCCCGCGGCTGCCGCTCCTGCGCGTCCCGACGG
GCTGCTGAGTCGCGCGCTGCGGGCTGGGAGGAGTCGCGCGCTGACCCGCGTCCGCTCCGTCACAGCGG
AACGAGGACAAGGAGCGCCGCGGGCTCCAGTCCCGGCCCGGGCCCTCCACGAGCCCGCGTCTG
CCCGGTCCGTTTCCGAGCGCTGGAGGCGAGGGCACCGTGGCTCTGGGCCGCGCGGCGACGCCCT
GCGCTGGCCGCGAGTACTGTCCGGAAACCGGGCGTCCGCTCCGGCTGCTCCGCGCGAGAGCCCG
GCCGGAGGCGCCCGGGCCCGAGCCGTCAGTGTGCGCTCAGCCTCGTCTCGGCGCGCGGCGACCG
CGCTTCGCAATGCAGCACTGTGGTGGGGCGCAGCCGCAAGGCCTCCTTTGACCAGGACTTCTGCTTGA
CGGCTCTCGGAGGACGAAGTGCGCCGCTGGCGTTGAGTCAAGGCCCGGGACGAGGGCCGCGCGCG
GAGCGGGCCGCTGCTGGGCCAGGGTGAAGTGTCCCTGGGCGCCCTCCTGCTGCTC

ACGCGTACGCGGCCGCTCGAGCAGAACTCATCTCAGAAGAGGATCTGGCAGCAAATGATATCCTGGATT
ACAAGGATGACGACGATAAGGTTAA



[View online »](#)

Protein Sequence: >RC221228 representing NM_207322
Red=Cloning site Green=Tags(s)

MWCLERLRLGPECLRRSGDWLLPGRARGAKSRTTAACANVLTDPRIPEFCIPRLLMPRLALAALRNSWVE
 EAGMDEGAGRTDWDPRSQAALSLPHLPRVRTAYGFCALLESPHTRRKESSLLGGPPAPRRAHTYGGGGG
 PDALLGTLRVPRAPGPATPAAPGCPRPQDALARRPRGCRLLRVPDGLL SRALRAGRSRRLTRVRSVSSG
 NEDKERRAGSQSPARAPSTSPSSRVPFPERLEAEGTVALGRAGDALRLAAEYCPGTGRLRLRLRAESP
 AGGAPGPRAVSCRLSLVLRPPGTALRQCSTVVGRSRKASFDQDFCFDGLSEDEVRRRLAVRVKARDEGRGR
 ERGRLLGQGELSLGALLLL

TRTRPLEQKLISEEDLAANDILDYKDDDDKV

Chromatograms: https://cdn.origene.com/chromatograms/mg3460_a08.zip

Restriction Sites: SgfI-MluI

Cloning Scheme:



ACCN: NM_207322

ORF Size: 1107 bp

OTI Disclaimer: The molecular sequence of this clone aligns with the gene accession number as a point of reference only. However, individual transcript sequences of the same gene can differ through naturally occurring variations (e.g. polymorphisms), each with its own valid existence. This clone is substantially in agreement with the reference, but a complete review of all prevailing variants is recommended prior to use. [More info](#)

OTI Annotation: This clone was engineered to express the complete ORF with an expression tag. Expression varies depending on the nature of the gene.

Components: The ORF clone is ion-exchange column purified and shipped in a 2D barcoded Matrix tube containing 10ug of transfection-ready, dried plasmid DNA (reconstitute with 100 ul of water).

Reconstitution Method:

1. Centrifuge at 5,000xg for 5min.
2. Carefully open the tube and add 100ul of sterile water to dissolve the DNA.
3. Close the tube and incubate for 10 minutes at room temperature.
4. Briefly vortex the tube and then do a quick spin (less than 5000xg) to concentrate the liquid at the bottom.
5. Store the suspended plasmid at -20°C. The DNA is stable for at least one year from date of shipping when stored at -20°C.

RefSeq: [NM_207322.3](#)

RefSeq Size: 1407 bp

RefSeq ORF: 1110 bp

Locus ID: 145741

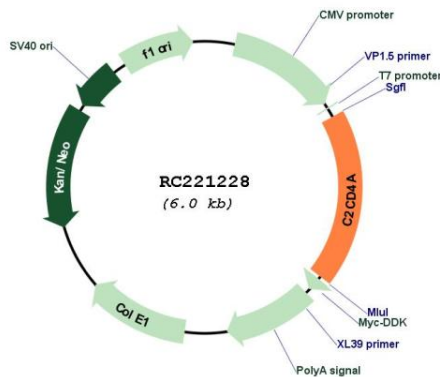
UniProt ID: [Q8NCU7](#)

Cytogenetics: 15q22.2

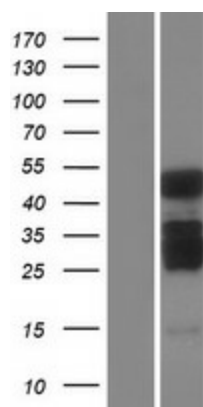
MW: 39.6 kDa

Gene Summary: May be involved in inflammatory process. May regulate cell architecture and adhesion. [UniProtKB/Swiss-Prot Function]

Product images:



Circular map for RC221228



Western blot validation of overexpression lysate (Cat# [LY404099]) using anti-DDK antibody (Cat# [TA50011-100]). Left: Cell lysates from untransfected HEK293T cells; Right: Cell lysates from HEK293T cells transfected with RC221228 using transfection reagent MegaTran 2.0 (Cat# [TT210002]).