

Product datasheet for RC221227L1

SPO11 (NM_012444) Human Tagged Lenti ORF Clone

Product data:

Product Type:	Expression Plasmids
Product Name:	SPO11 (NM_012444) Human Tagged Lenti ORF Clone
Tag:	Myc-DDK
Symbol:	SPO11
Synonyms:	CT35; SPATA43; TOPOVIA; TOPVIA
Mammalian Cell Selection:	None
Vector:	pLenti-C-Myc-DDK (PS100064)
E. coli Selection:	Chloramphenicol (34 ug/mL)
ORF Nucleotide Sequence:	The ORF insert of this clone is exactly the same as(RC221227).
Restriction Sites:	SgfI-MluI
Cloning Scheme:	

Cloning sites used for ORF Shuttling:



* The last codon before the Stop codon of the ORF.

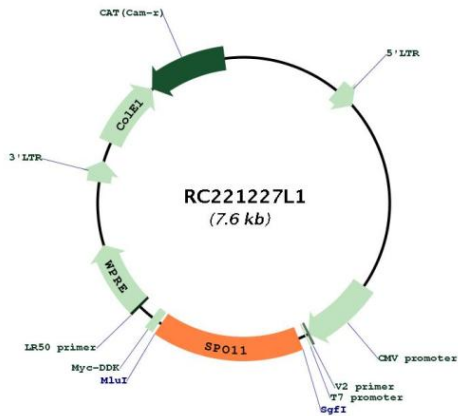
ACCN:	NM_012444
ORF Size:	1188 bp



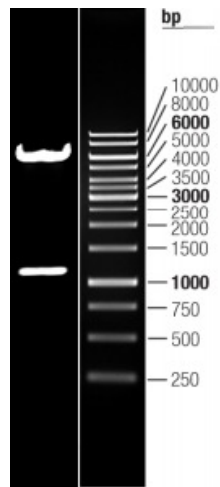
[View online »](#)

OTI Disclaimer:	The molecular sequence of this clone aligns with the gene accession number as a point of reference only. However, individual transcript sequences of the same gene can differ through naturally occurring variations (e.g. polymorphisms), each with its own valid existence. This clone is substantially in agreement with the reference, but a complete review of all prevailing variants is recommended prior to use. More info
OTI Annotation:	This clone was engineered to express the complete ORF with an expression tag. Expression varies depending on the nature of the gene.
Components:	The ORF clone is ion-exchange column purified and shipped in a 2D barcoded Matrix tube containing 10ug of transfection-ready, dried plasmid DNA (reconstitute with 100 ul of water).
Reconstitution Method:	<ol style="list-style-type: none"> 1. Centrifuge at 5,000xg for 5min. 2. Carefully open the tube and add 100ul of sterile water to dissolve the DNA. 3. Close the tube and incubate for 10 minutes at room temperature. 4. Briefly vortex the tube and then do a quick spin (less than 5000xg) to concentrate the liquid at the bottom. 5. Store the suspended plasmid at -20°C. The DNA is stable for at least one year from date of shipping when stored at -20°C.
RefSeq:	NM_012444.2
RefSeq Size:	1826 bp
RefSeq ORF:	1191 bp
Locus ID:	23626
UniProt ID:	Q9Y5K1
Cytogenetics:	20q13.31
Protein Families:	Druggable Genome, Transcription Factors
MW:	44.4 kDa
Gene Summary:	<p>Meiotic recombination and chromosome segregation require the formation of double-strand breaks (DSBs) in paired chromosome homologs. During meiosis in yeast, a meiotic recombination protein is covalently-linked to the 5' end of DSBs and is essential for the formation of DSBs. The protein encoded by this gene is similar in sequence and conserved features to the yeast meiotic recombination protein. The encoded protein belongs to the TOP6A protein family. Several transcript variants encoding different isoforms have been found for this gene, but the full-length nature of only two of them have been described. [provided by RefSeq, Jul 2008]</p>

Product images:



Circular map for RC221227L1



Double digestion of RC221227L1 using SgfI and MluI