

Product datasheet for RC221226

LHX6 (NM_014368) Human Tagged ORF Clone

Product data:

Product Type:	Expression Plasmids
Product Name:	LHX6 (NM_014368) Human Tagged ORF Clone
Tag:	Myc-DDK
Symbol:	LHX6
Synonyms:	LHX6.1
Mammalian Cell Selection:	Neomycin
Vector:	pCMV6-Entry (PS100001)
E. coli Selection:	Kanamycin (25 ug/mL)
ORF Nucleotide Sequence:	>RC221226 representing NM_014368 Red=Cloning site Blue=ORF Green=Tags(s)

TTTTGTAATACGACTCACTATAGGGCGGCCGGGAATTCGTCGACTGGATCCGGTACCGAGGAGATCTGCC
GCC**CGATCGC**C

ATGTA**CTGGAAGCATGAGA**ACGCCGCCCGCCGGCTT**GCCCGAGGGCTGCCGGCTGCCGGCCGAGGGCGGCC**
CCGCCACCGAC**AGGTGATGGCC**AGCCAGGGTCCGGCTGCAAAGCGAC**ACCCGCTGTCTTGAAGGGAC**
CGCGCCCGCCGCATGGCTCAGTCTGACCGCGAGGCC**TGGCAGGAGCTCTGGACAAGGACGAGGGTCAG**
GCCTCCCATGTACGCCAGCACGCCATCTGTCTGCTCACCGCCCTCTGCCGCCTCCTCCGTGCCGCTG
CAGGCAAGAACATCTGCTCCAGTGC**GGCCTCGAGATCCTGGACCGATATCTGCTCAAGTCAACAACCT**
CATCTGGCACGTGCGGTGCCTCGAGTGC**TCCGTGTGTCGACGTCGCTGAGGCAGCAGAACAGCTGTAC**
ATCAAGAACAAGGAGATCTTCTGCAAGATGGACTACTT**CAGCCGATTCGGGACCAAGTGTGCCCGGTGCG**
GCCGACAGATCTACGCCAGCGACTGGGTGCGGAGAGCTCGCGGCAACGCCTACCACCTGGCCTGCTTCGC
CTGCTTCTCGTGAAGCGCCAGCTGTCCACTGGT**GAGGAGTTCGGCCTGGTCGAGGAGAAGGTGCTCTGC**
CGCATCCACTACGACACCATGATTGAGAACCTCAAGAGGGCCCGCCGAGAACGGGAACGGCCCTCACGTTGG
AGGGGGCAGTGCCTCGGAACAGGACAGTCAACCCAAGCCGGCCAAGCGCGCGGGACGTCCTTACC**CGC**
GGAACAGCTGCAGTTATGCAGGCGCAGTTCGCGCAGGACAACAACCCCGACGCTCAGACGCTGCAGAAG
CTGGCGGACATGACGGGCCTCAGCCGGAGAGT**CATCCAGGTGTGGTTTCAA**AACTGCCGGCGCGTCATA
AAAAGCACACGCCGCAACACCCAGTGC**CGCCCTCGGGGGCGCCCGTCCCGCCTTCCCTCCGCCCTGTC**
CGACGACATCCACTACACCCCGTTCAGCAGCCCGAGCGGGCGCGCATGGT**CACCCTGCACGGCTACATT**
GAGAGTCAAGTACAGTGCGGGCAGTGC**ACTGCCGGCTGCCTTACACCGCACCCCGTCCACCTCAAAG**
CCGATATGGATGGGCCGCTCTCCAACCGGGGTGAGAAGGT**CATCCTTTTT**CAGTAC

ACGCGTACCGGGCCGCTCGAGCAGAAACTCATCTCAGAAAGAGGATCTGGCAGCAAATGATATCCTGGATT
ACAAGGATGACGACGATAAGGTTTAA



Protein Sequence: >RC221226 representing NM_014368
Red=Cloning site Green=Tags(s)

MYWKHENAAPALPEGRLPAEGGPATDQVMAQPGSGCKATTRCLEGTAPPAMAQSDAEALAGALDKDEGQ
 ASPCTPSTPSVCSPPSAASSVPSAGKNICSSCGLEILDYLLKVNLIWHVRCLECSVCRTSLRQQNSCY
 IKNKEIFCKMDYFSRFGTKCARCGRQIYASDWVRRARGNAYHLACFACFSCKRQLSTGEEFGLVEEKVLC
 RIHYDTMIENLKRAAENGNGLTLEGAVPSEQDSQPKPAKRARTSF TAEQLQVMQAQFAQDNNPDAQTLQK
 LADMTGLSRRVIQVWFQNCRRARHKHTPQHPVPPSPGAPPSRLPSALSDDIHYTPFSSPERARMVTLHGVI
 ESQVQCGQVHCRLPYTAPPVHLKADMDGPLSNRGEKVIILFY

TRTRPLEQKLISEEDLAANDILDYKDDDDKV

Chromatograms: https://cdn.origene.com/chromatograms/mk8043_c03.zip

Restriction Sites: SgfI-MluI

Cloning Scheme:



* The last codon before the Stop codon of the ORF

ACCN: NM_014368

ORF Size: 1176 bp

OTI Disclaimer: The molecular sequence of this clone aligns with the gene accession number as a point of reference only. However, individual transcript sequences of the same gene can differ through naturally occurring variations (e.g. polymorphisms), each with its own valid existence. This clone is substantially in agreement with the reference, but a complete review of all prevailing variants is recommended prior to use. [More info](#)

OTI Annotation: This clone was engineered to express the complete ORF with an expression tag. Expression varies depending on the nature of the gene.

Components: The ORF clone is ion-exchange column purified and shipped in a 2D barcoded Matrix tube containing 10ug of transfection-ready, dried plasmid DNA (reconstitute with 100 ul of water).

Reconstitution Method:

1. Centrifuge at 5,000xg for 5min.
2. Carefully open the tube and add 100ul of sterile water to dissolve the DNA.
3. Close the tube and incubate for 10 minutes at room temperature.
4. Briefly vortex the tube and then do a quick spin (less than 5000xg) to concentrate the liquid at the bottom.
5. Store the suspended plasmid at -20°C. The DNA is stable for at least one year from date of shipping when stored at -20°C.

RefSeq: [NM_014368.5](#)

RefSeq Size: 3377 bp

RefSeq ORF: 1179 bp

Locus ID: 26468

UniProt ID: [Q9UPM6](#)

Cytogenetics: 9q33.2

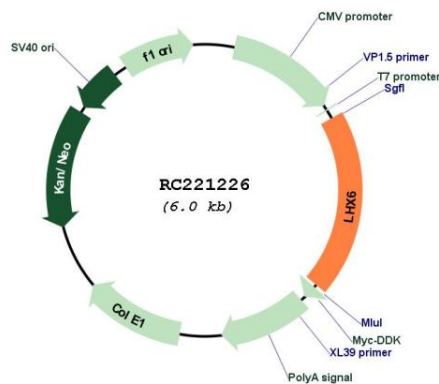
Domains: homeobox, LIM

Protein Families: Transcription Factors

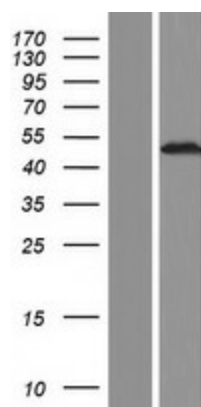
MW: 43 kDa

Gene Summary: This gene encodes a member of a large protein family that contains the LIM domain, a unique cysteine-rich zinc-binding domain. The encoded protein has tandem LIM domains as well as a DNA-binding homeodomain. The protein functions as a transcription factor involved in embryogenesis and head development and is highly expressed in neural crest derived mesenchyme cells. Alternative splicing results in multiple transcript variants encoding distinct isoforms. [provided by RefSeq, Jan 2017]

Product images:



Circular map for RC221226



Western blot validation of overexpression lysate (Cat# [LY415332]) using anti-DDK antibody (Cat# [TA50011-100]). Left: Cell lysates from untransfected HEK293T cells; Right: Cell lysates from HEK293T cells transfected with RC221226 using transfection reagent MegaTran 2.0 (Cat# [TT210002]).