

## Product datasheet for RC221225

### LIPF (NM\_004190) Human Tagged ORF Clone

#### Product data:

|                           |   |
|---------------------------|---|
| Product Type:             | Expression Plasmids   |
| Product Name:             | LIPF (NM_004190) Human Tagged ORF Clone                                     |
| Tag:                      | Myc-DDK   |
| Symbol:                   | LIPF  |
| Synonyms:                 | GL; HGL; HLAL   |
| Mammalian Cell Selection: | Neomycin  |
| Vector:                   | pCMV6-Entry (PS100001)  |
| E. coli Selection:        | Kanamycin (25 ug/mL)  |
| ORF Nucleotide Sequence:  | >RC221225 representing NM_004190<br>Red=Cloning site Blue=ORF Green=Tags(s) |

TTTTGTAATACGACTCACTATAGGGCGCCGGGAATTCGTCGACTGGATCCGGTACCGAGGAGATCTGCC  
GCC**CGATCGCC**

ATGTGGCTGCTTTAACAATGGCAAGTTTGATATCTGTACTGGGGACTACACATGGTTTGTGGAAAAT  
TACATCCTGGAAGCCCTGAAGTGACTATGAACATTAGTCAGATGATTACTTATTGGGGATACCCAAATGA  
AGAATATGAAGTTGTGACTGAAGATGGTTATATTCTTGAAGTCAATAGAATTCCTTATGGGAAGAAAAAT  
TCAGGGAATACAGGCCAGAGACCTGTTGTGTTTTGCAGCATGGTTTGCATCAGCCACAACTGGA  
TTTCCAACCTGCCGAACAACAGCCTTGCCTTCATTCTGGCAGATGCTGGTTATGATGTGTGGCTGGCAA  
CAGCAGAGGAAACACCTGGGCCAGAAGAACTGTACTATTCACCAGATTCAGTTGAATTCGGGCTTTC  
AGCTTTGATGAAATGGCTAAATATGACCTTCCAGCCACAATCGACTTCATTGTAAGAAAACCTGGACAGA  
AGCAGCTACACTATGTTGGCCATCCCAGGGCACCACCATTGGTTTTATTGCCTTTCCACCAATCCCAG  
CCTGGCTAAAAGAATCAAACCTTCTATGCTCTAGCTCCTGTTGCCACTGTGAAGTATACAAAAGCCTT  
ATAAACAACTTAGATTTGTTCCCTCAATCCCTCTCAAGTTTATATTTGGTGACAAAATATTCTACCCAC  
ACAACCTCTTTGATCAATTTCTTGCTACTGAAGTGTGCTCCCGTGAGATGCTGAATCTCCTTTCAGCAA  
TGCCTTATTTATAATTTGTGGATTTGACAGTAAGAAGTTTAAACACGAGTCGCTTGGATGTGTATCTATCA  
CATAATCCAGCAGGAACCTTCTGTTCAAAACATGTTCCATTGGACCCAGGCTGTTAAGTCTGGGAAATTC  
AAGCTTATGACTGGGGAAGCCAGTTCCAGAAATAGGATGCACTATGATCAGTCCCAACCTCCCTACTACAA  
TGTGACAGCCATGAATGTACCAATTGCAAGTGTGGAACGGTGGCAAGGACCTGTTGGCTGACCCCCAAGAT  
GTTGGCCTTTTGTTCAAAACCTCCCAATCTTATTTACCACAAGGAGATTCTTTTTACAACACTTGG  
ACTTTATCTGGCAATGGATGCCCTCAAGAAGTTTACAATGACATTGTTTCTATGATATCAGAAGATAA  
AAAG

**ACGCGT**ACGCGGCCGCTCGAGCAGAACTCATCTCAGAAGAGGATCTGGCAGCAAATGATATCTGGATT  
ACAAGGATGACGACGATAAGGTTTAA



[View online »](#)

**Protein Sequence:** >RC221225 representing NM\_004190  
Red=Cloning site Green=Tags(s)

MWLLLTMASLISVLGTTHGLFGKLHPGSPEVTMNISQMITYWGYPNEEYEVVTEDEGYILEVNRIPYGKKN  
 SGNTGQRPVVFLQHGLLASATNWI SNLPNNSLAFILADAGYDVWLGN SRGNTWARRNLYSPDSVEFWAF  
 SFDEMAKYDLPATIDFIVKKTGQKQLHYVGHSSQGTITIGFIAFSTNPSLAKRIKTFYALAPVATVKYTKSL  
 INKLRFPVQSLFKFIFGDKIFYPHNFFDQFLATEVCSREMLNLLCSNALFII CGFDSKNFNTRSRLDVYLS  
 HNPAGTSVQNMFWHTQAVKSGKFQAYDWGSPVQNRMHYDQSQPPYYNVTAMNVPIAVWNGGKDLLADPQD  
 VGLLLPKLPNLIYHKEIPFYNHLDFIWAMDAPQEYVNDIVSMISEDKK

TRTRPLEQKLISEEDLAANDILDYKDDDDKV

**Chromatograms:** [https://cdn.origene.com/chromatograms/mk6120\\_c08.zip](https://cdn.origene.com/chromatograms/mk6120_c08.zip)

**Restriction Sites:** SgfI-MluI

**Cloning Scheme:**



\* The last codon before the Stop codon of the ORF

**ACCN:** NM\_004190

**ORF Size:** 1194 bp

**OTI Disclaimer:** The molecular sequence of this clone aligns with the gene accession number as a point of reference only. However, individual transcript sequences of the same gene can differ through naturally occurring variations (e.g. polymorphisms), each with its own valid existence. This clone is substantially in agreement with the reference, but a complete review of all prevailing variants is recommended prior to use. [More info](#)

**OTI Annotation:** This clone was engineered to express the complete ORF with an expression tag. Expression varies depending on the nature of the gene.

**Components:** The ORF clone is ion-exchange column purified and shipped in a 2D barcoded Matrix tube containing 10ug of transfection-ready, dried plasmid DNA (reconstitute with 100 ul of water).

**Reconstitution Method:**

1. Centrifuge at 5,000xg for 5min.
2. Carefully open the tube and add 100ul of sterile water to dissolve the DNA.
3. Close the tube and incubate for 10 minutes at room temperature.
4. Briefly vortex the tube and then do a quick spin (less than 5000xg) to concentrate the liquid at the bottom.
5. Store the suspended plasmid at -20°C. The DNA is stable for at least one year from date of shipping when stored at -20°C.

**RefSeq:** [NM\\_004190.4](#)

**RefSeq Size:** 1365 bp

**RefSeq ORF:** 1197 bp

**Locus ID:** 8513

**UniProt ID:** [P07098](#)

**Cytogenetics:** 10q23.31

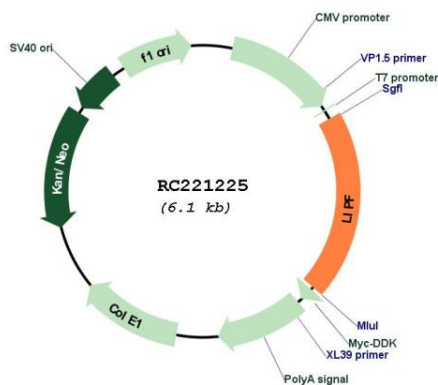
**Protein Families:** Druggable Genome, Secreted Protein

**Protein Pathways:** Glycerolipid metabolism, Metabolic pathways

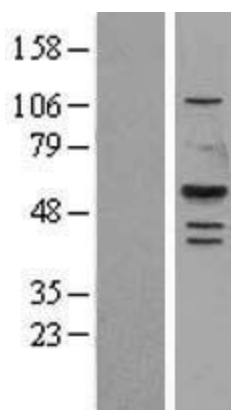
**MW:** 45.24 kDa

**Gene Summary:** This gene encodes gastric lipase, an enzyme involved in the digestion of dietary triglycerides in the gastrointestinal tract, and responsible for 30% of fat digestion processes occurring in human. It is secreted by gastric chief cells in the fundic mucosa of the stomach, and it hydrolyzes the ester bonds of triglycerides under acidic pH conditions. The gene is a member of a conserved gene family of lipases that play distinct roles in neutral lipid metabolism. Several transcript variants encoding different isoforms have been found for this gene. [provided by RefSeq, Nov 2010]

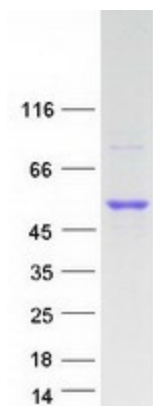
### Product images:



Circular map for RC221225



Western blot validation of overexpression lysate (Cat# [LY401348]) using anti-DDK antibody (Cat# [TA50011-100]). Left: Cell lysates from untransfected HEK293T cells; Right: Cell lysates from HEK293T cells transfected with RC221225 using transfection reagent MegaTran 2.0 (Cat# [TT210002]).



Coomassie blue staining of purified LIPF protein (Cat# [TP321225]). The protein was produced from HEK293T cells transfected with LIPF cDNA clone (Cat# RC221225) using MegaTran 2.0 (Cat# [TT210002]).