

Product datasheet for **RC221224**

IFFO (IFFO1) (NM_080730) Human Tagged ORF Clone

Product data:

Product Type:	Expression Plasmids
Product Name:	IFFO (IFFO1) (NM_080730) Human Tagged ORF Clone
Tag:	Myc-DDK
Symbol:	IFFO
Synonyms:	HOM-TES-103; IFFO
Mammalian Cell Selection:	Neomycin
Vector:	pCMV6-Entry (PS100001)
E. coli Selection:	Kanamycin (25 ug/mL)



[View online »](#)

ORF Nucleotide Sequence:

>RC221224 representing NM_080730
 Red=Cloning site Blue=ORF Green=Tags(s)

TTTTGTAATACGACTCACTATAGGGCGGCCGGGAATTCGTCGACTGGATCCGGTACCGAGGAGATCTGCC
 GCC**CGCATCGCC**

ATGAATCCGTTATTCGGCCCCAACCTCTTCTCTGCAGCAGGAGCAGCAGGGCCTGGCCGGCCACTGG
 GGGACTACTGGAGGCGACCACTTCGCCGGGGAGGAGACTTGCCCCGGCGCCTCTCTCGCCGGCCGG
 CCCTGCTGCCTACTCGCCGCCGGGGCCGGCCCGCCCTGCCGCCATGGCCCTCCGCAATGACCTG
 GGCTCCAACATCAACGTCTCAAGACCCTGAACCTCCGTTCCGCTGCTTCTGGCCAAGGTGCATGAGC
 TGGAGCGCCGAACCGGCTGTTGGAGAAGCACTGCAGCAAGCGCTGGAGGAGGGTAAGCAGGGCCGGCG
 GGGCCTGGGTCTCGGACCAGGCAGTGCAGACCAGGCTTCGTGAGCCCCATCCGGCCCTGGGGCTGCAG
 CTGGGCGCCCGCCGGCCGCTGTCTGCAGCCCTTCGGCGCGCTGCTGGGCTCGCCCGCGCCTCCCGG
 CCGGCCCTCGGCCCTCCGGCCAGCCTCTCGTCTCTCCACCTCCACCTCCACCACCTATTCCTC
 GTCGGCCCGCTTCATGCCCGCACCATCTGGTCTTCTCGCAGCCCGCCGGCTCGGGCCGGACTGGAG
 CCCACTCTGGTGAAGGGCCTGGCTTGTCTGGGTGCACCCGGATGGGGTGGGCGTCCAGATCGACACCA
 TCACGCCCGAGATCCGCGCTCTCTACAACGTGCTGGCCAAAGTGAAGCGGGAGCGGGACGAGTACAAGCG
 GAGGTGGGAAGAGGAGTACACGGTGCAGTCCAGCTGCAAGACCGTGAATGAGCTCCAGGAGGAAGCC
 CAGGAGGCTGATGCCTGCCAGGAGGAGCTGGCACTGAAGTGAACAGTTGAAGGCTGAGCTGGTGGTCT
 TCAAGGGGCTCATGAGTAAACCTGTCGGAGCTGGACACCAAGTCCAGGAGAAAGCCATGAAGGTGGA
 TATGGACATCTGCCCGCCATCGACATCACCGCAAGCTCTCGATGTGGCTCAGCAGCGCAACTGCGAG
 GACATGATCCAGATGTTCCAGTCCCATCCATGGGGGGCGGAAGCGGGAGCGCAAGGCTGCCGTCGAGG
 AGGACACTCCCTGTGAGAGAGTGGGGCCCGCCAGCCGATGGGGATGAGGAGGAGACACAGCCCT
 CAGCATCAACGAGGAGATGCAGCGCATGCTCAACCAGCTGAGGGAGTATGATTTTGGAGACGACTGTGAC
 AGCCTGACTTGGGAGGAGACTGAGGAGACCCTGCTGCTTTGGGAGGATTTCTCAGGCTATGCCATGGCAG
 CTGCAGAGGCCAGGAGAGCAGGAAGATAGCCTGGAGAAGGTGATTAAGATACGGAGTCCCTGTTCAA
 AACCCGGGAGAAGGAGTATCAGGAGACCATTGACCAGATAGAGCTGGAGTTGGCCACGGCCAAGAACGAC
 ATGAACCGGCACCTGCACGAGTACATGGAGATGTGCAGCATGAAGCGCGGCTGGACGTGCAGATGGAGA
 CCTGCCCGGCTCATCACCCAGTCTGGAGACCGAAAGTCTCTGCTTTCCTGCTTTCCTGCGGTCCCGCTTAGCGA
 CCCGCCCGCCCAAGCGAGGCTGAGGACTCCGATCGCGATGTCTCATCTGACAGCTCCATGAGA

ACGCGTACGCGGCCGCTCGAGCAGAACTCATCTCAGAAGAGGATCTGGCAGCAAATGATATCCTGGATT
 ACAAGGATGACGACGATAAGGTTTAA

Protein Sequence:

>RC221224 representing NM_080730
 Red=Cloning site Green=Tags(s)

MNPLFGPNLFLQQEQQLAGPLGDSLGGDHFAGGGDLPPAPLSPAGPAAYSPPGPGPAPPAAMALRNDL
 GSNINVLKTLNLRFRFLAKVHELERRNRLLEKQLQQALEEKGQRRRGLGRRDQAVQTGFVSPIRPLGLQ
 LGARPAAVCSPSARVLGSPARSPAGPLAPSAASLSSSSTSTSTTYSSSARFMPGTIWSF SHARRLGPGL
 PTLVQGPGLSWVHPDGVGVQIDITPEIRALYNVLAKVKRERDEYKRRWEEYTVRIQLQDRVNELQEEA
 QEADACQEELALKVEQLKAEVVFVKGLMSNNLSELDTKIQEKAMKVDMDICRRIDITAKLCDVAQQRNCE
 DMIQMFQVPSMGGRKRERKA AVEEDTSLSESEGRQPDGDEEESTALSINEEMQRLNQLREYDFEDDCD
 SLTWEETEETLLWEDFSGYAMAAEAQGEQEDSLEKVIKDTESLFKTREKEYQETIDQIELELATAKND
 MNRHLHEYMEMCSMKRGLDVQMETCRRLITQSGDRKSPAFTAVPLSDPPPPSEAESDRDVSDDSSMR

TRTRPLEQKLISEEDLAANDILDYKDDDDKV

Restriction Sites:

Sgfl-MluI

Cloning Scheme:

ACCN: NM_080730

ORF Size: 1677 bp

OTI Disclaimer: The molecular sequence of this clone aligns with the gene accession number as a point of reference only. However, individual transcript sequences of the same gene can differ through naturally occurring variations (e.g. polymorphisms), each with its own valid existence. This clone is substantially in agreement with the reference, but a complete review of all prevailing variants is recommended prior to use. [More info](#)

OTI Annotation: This clone was engineered to express the complete ORF with an expression tag. Expression varies depending on the nature of the gene.

Components: The ORF clone is ion-exchange column purified and shipped in a 2D barcoded Matrix tube containing 10ug of transfection-ready, dried plasmid DNA (reconstitute with 100 ul of water).

- Reconstitution Method:**
1. Centrifuge at 5,000xg for 5min.
 2. Carefully open the tube and add 100ul of sterile water to dissolve the DNA.
 3. Close the tube and incubate for 10 minutes at room temperature.
 4. Briefly vortex the tube and then do a quick spin (less than 5000xg) to concentrate the liquid at the bottom.
 5. Store the suspended plasmid at -20°C. The DNA is stable for at least one year from date of shipping when stored at -20°C.

RefSeq: [NM_080730.3](#)
RefSeq Size: 2706 bp

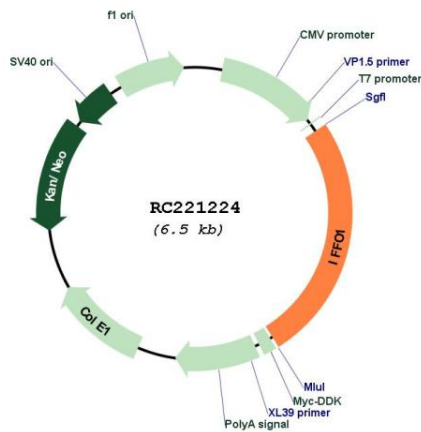
RefSeq ORF: 1689 bp

Locus ID: 25900

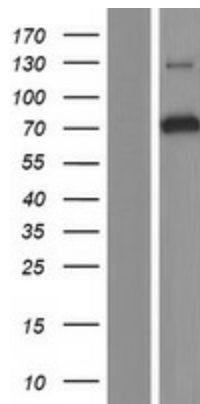
UniProt ID: [Q0D2I5](#)

Cytogenetics: 12p13.31
Domains: filament
Protein Families: Druggable Genome
MW: 61.8 kDa
Gene Summary: This gene is a member of the intermediate filament family. Intermediate filaments are proteins which are primordial components of the cytoskeleton and nuclear envelope. The proteins encoded by the members of this gene family are evolutionarily and structurally related but have limited sequence homology, with the exception of the central rod domain. Multiple alternatively spliced transcript variants encoding different isoforms have been found for this gene. [provided by RefSeq, Jul 2010]

Product images:



Circular map for RC221224



Western blot validation of overexpression lysate (Cat# [LY409046]) using anti-DDK antibody (Cat# [TA50011-100]). Left: Cell lysates from untransfected HEK293T cells; Right: Cell lysates from HEK293T cells transfected with RC221224 using transfection reagent MegaTran 2.0 (Cat# [TT210002]).