

Product datasheet for RC221220

ZNF516 (NM_014643) Human Tagged ORF Clone

Product data:

Product Type:	Expression Plasmids
Product Name:	ZNF516 (NM_014643) Human Tagged ORF Clone
Tag:	Myc-DDK
Symbol:	ZNF516
Synonyms:	HsT287
Mammalian Cell Selection:	Neomycin
Vector:	pCMV6-Entry (PS100001)
E. coli Selection:	Kanamycin (25 ug/mL)
ORF Nucleotide Sequence:	>RC221220 representing NM_014643 Red=Cloning site Blue=ORF Green=Tags(s)

TTTTGTAATACGACTCACTATAGGGCGGCCGGAATTCGTCGACTGGATCCGGTACCGAGGAGATCTGCC
GCC**CGATCGCC**

ATGGATCGCAACAGAGAGGCCGAGATGGAGCTGAGGCGAGGCCCCAGCCCCACCAGGGCCGGCCGGGGCC
ACGAGGTGGATGGGGACAAGGCTACCTGCCACACCTGCTGCATCTGCGGCAAGAGCTTCCCTTCCAGAG
CTCGCTTCGCAGCACATGCGCAAGCACACGGGCGAGAAGCCCTACAAGTGTCCCTACTGCGACCACCGG
GCTTCCAGAAAGGCAACCTGAAGATTCACATCCGGAGCCACCGCACGGGGACTCTGATTCAGGGACACG
AGCCGGAGGCGGGCGAGGCGCCGCTGGGTGAGATGCGCGCCTCCGAGGGCCTGGACGCTGCGCCAGCCC
CACCAAGAGCGCCTCTGCCTGCAACCGGCTGCTGAACGGGGCCTCGCAGGCCGACGGCGCCAGGGTCTG
AACGGGGCCTCGCAGGCCGACAGCGGCAGATCCTGCTGCGGAGCAGCAAGAAGGGGGCAGAGGGGTCCG
CATGCGCCCCGGGGGAGGCCAAGGCAGCGGTCCAGTGCTCCTTCTGCAAGAGCCAGTTCCGAGCGTAAGAA
GGACCTGGAGCTGCACGTGCACCAGGCGCACAGCCGTTCAAGTGACGGCTGTGCAGCTACGCGACGCTG
CGGAGGAGTTCGCTGCTGAGCCACATCGAGAGGGACCACATCACCGCGCAGGGGCCCGGCAGCGGCGAGG
CCTGCGTGGAGAACGGCAAGCCCGAGCTGAGCCCCGGGGAGTTCCCGTGCAGGTTGTGTGCCAGGCCTT
CAGCCAGACCTGGTTCTGAAGGCGCACATGAAGAAGCACCGGGGCTCCTTCGACCACGGTGCACATC
TGCGGCCGTAGGTTCAAGGAGCCCTGGTTCTCAAGAACCACATGAAGGGCGCAGGCCCCCAAGACGGGCA
GCAAGAACAGGCCCAAGAGTGAGCTGGACCCCATCGCCACCATCAACAAGTGGTCCAGGAGGAGTGAT
CGTCGCGCCGCTGAGCCTCTACGAGTCTGCGCCAAGTGCAGGAACTGTTTACAACCTGGACAGCTTG
AACGCCACAATGCCATCCACCGCAGAGTGCAGGCCAGCCGACGCGCGCCCCGGCCGAGGAGGGGGCGG
AGGGGCCCTCGGACACCAAGCAGTTCTTCTCCAGTGCCTGAACCTGAGGCCGTGCGGCGCCGGCGACTC
GTGCCCTGGCACGAGCCGGACGGCGGGTGGCTGAGCTGGACCCGGTCAACAGCTACCAGGCTGGCAG
CTGGCCACGCGGGTAAGGTGGCCGAGCCGGCGAGTACCTCAAGTACGGGGCTGGGACGAGGCGCTGG
CCGGGGACGTGGCCTTCACAAGGACAGGCGGAGTACGTCTGGTGGCCAGGAGAAGCGCAAGCGTGA
GCAGGATGCACCAGCCGCGCAGGGGCCCGCGGAAGCGCGAGCGGGCCTGGGACCCCGCGCCCGCC



GGCCACCTCGATCCCGCTCGGCCGCGGCCCAACCGCAGGGCCGACGCCACCACCGGCCAGGGCAAGT
CCTCCGAGTGCTTCGAGTGCGGCAAGATCTTCCGCACCTATCATCAGATGGTGTGCACTCACGCGTGCA
TCGCCGCGCGCCGCGAGAGGGACAGTGACGGGGACAGGGCGGGCGGGCCCGCTGCGGATCACTCAGT
GAGGGTACTCGGCCTCCAGCCAGCAGCCCTGGCTCCGCCTGTGCCGTGTGACTCCCCGGCTCTG
GCCTGGCCGACGAGGCTGCCGAAGACAGTGGTGAGGAGGGCGCCCTGAACCTGCACCAGGGGGACAGCC
GCGCCGCTGCTGCTTTCCGAAGAGTGACTTCGACCGAGCTCCTCAGTGGAGACCAGAGTCACAAGATG
GGAGATAACGCCCTCGGAAAGAGACACCGCGAGTCCAAGGCAGGGATCGCAGCTTCTGTGTCCATACTTG
AAAACAGTAGCAGAGAGACTTCTAGAAGCAAGAGCAGCACAGATTTTCTATGGACTTAAAGATGCCAGC
ATTTACCCCAAGCAGGAGGTGCCCGTCCCTGGTGTGGTGTGGAGTTCCTTCCAGTACGGGAGCGGAG
GGCCAGACGGGTACCCTGCAGAAAAGCTGTCCGATTTGCACAACAAGGAACACTCTGGGGGAGGGAAGC
GGGCGTGGCCCCAGACCTCATGCCGTAGATTTAAGTGCAGAGTGCAGCGGGATGACCCAGCAATAA
GGAGACGGCTCCTCCCTGCAGGCGGCTTGTAGTCGTTACCCGTGTCTTACTGCAGCCACAAGACCTAC
TACCCCGAGGTCCTGTGGATGCACAAACGCATCTGGCACCGTGTGAGTGCACCTCCGTGGCTCCCCGT
GGATTCAGCCCAATGGTTACAAAAGCATCAGAAGCAATTTGGTTTTCTTTCCCGAGCGGACGCACGGG
CCCCCGCTGCCCTCGGTGGCAAAGAATGCCAGCCTTTGCTCCTTGCTCGGTTACCCGCACTCAGGTG
CCAGGGGGGATGCCGGGTCCAAAAGTGCTCTTCTCCCTGGGAGTGGTCACAAAAGCCCTAGCATGC
CTAAGAATAAGGAGAGCCATTCCGGAGGTCCTGCGCTCTGTGGGCGCCCGGCCCTGACGGGTATCGACA
GACCAAACCTTGTACGGCCAGGAGCCACATGGCGCGCCACACAGGGGCCCTGGCCAAGCCAGGCGAG
GAGGCTAGCTCCAACCGGTGCCGTGCCCGGGTGGCGGGGCTTACAGCAGGAGCGCCACCCTACGCCCA
CCGTATCGCCCGGGCTGGCGCGCAGCCCTCGGCAATAGCAAGCCTGTGGAGAAGTTGGGGTCCCCC
AGCGGGGCTGGCTTTGCCCCACAAATAAGCACAGTGGCCGGACTCCTGAAAGCCAAATTCAGTGCT
CAGCCTCAGGGTCCACCTCCTGCAAAGGGCGAAGGGGGCGCTCCTCCTTACTCCCCGAGCCCCCT
CGAAGGCAGCCAGGAGCTGAGGACTCTGGCCACCTGTGCTGCGGGTCCAGGGGCGACGGCCCTTGCA
GGCCAGCCCGGCTGGCTGGGGCGCCCCGTCTACTCCATCAAACAGGAGCCAGTGGCCGAGGGG
CATGAGAAGCGCCTGGACATCCTCAACATCTTTAAGACGTACATTCAAAGGACTTTGCGACCCTTACC
AGGGATGGGTGTGAGCGCCCTGGGTTGGAGCACAGAGGGACACTCCGGACGCAGGCCCGGCCAGGAGA
GTTGCTGTGCATCGAGTGCAGAAAGAGCTTCCACCAGCCCGCCACCTCAGGGCCACATGCGGGCACAC
TCAGTGGTGTGAGTCCGATGGGCTCGGGTCTGAAGTTCATACCACCTCCGCAGACGCCCCAAAC
AAGGGAGAGACCATTCTAACACAGGTACCGTCCAGACAGTGCCTCTGAGAAAGGGAACC

AGCGGACCGACGCGTACGCGGCCGCTCGAGCAGAAACTCATCTCAGAAGAGGATCTGGCAGCAAATGATATCC
TGGATTACAAGGATGACGACGATAAGGTTTAA

Protein Sequence: >RC221220 representing NM_014643
 Red=Cloning site Green=Tags(s)

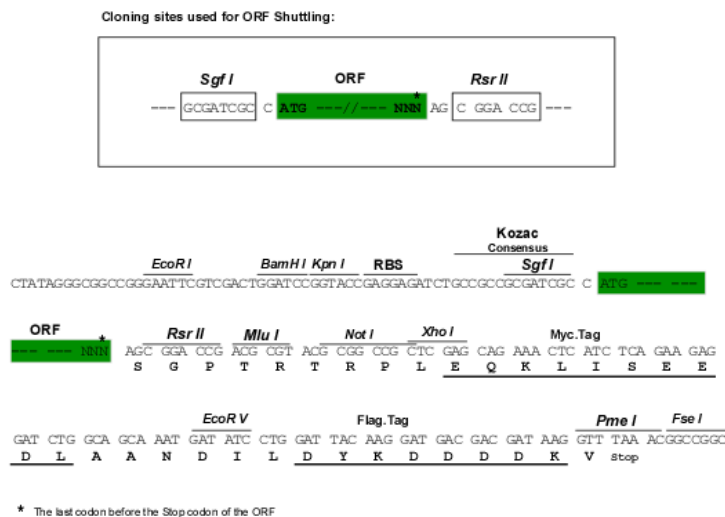
```
MDRNREAEMELRRGSPSTRAGRGEVDGDKATCCTCCICGKSFFPQSSLSQHMRKHTGEKPYKCPYCDHR
ASQKGNLKIHIRSHRTGTLIQGHEPEAGEAPLGEMRASEGLDACASPTKSASACNRLNGASQADGARVL
NGASQADSGRVLRLSSKKAEGSACAPGEAKAAVQCSFCKSQFERKKDLELHVHQAHKPFKRLCSYATL
REESLLSHIERDHITAQGPGEACVENGKPELSPGEFPCEVCGQAFSQTWFLKAHMKKHRSFDHGCHI
CGRRFKEPWFLKNHMKAHGPKTGSKNRPKSELDPIATINNVVQEEVIVAGLSLYEVCAKCGNLFNLDL
NAHNAIHRRVEASRTRAPAEEGAEGPSDTKQFFLQCLNLRPSAAGDSCPGTQAGRRAVAELDPVNSYQAWQ
LATRGKVAEPAEYLKYGAWDEALAGDVAFDKDRREYVLSQEKRKREQDAPAAQGPPrKRASGPGDPAPA
GHLDPRAARNRRAAATTGQGSSECFECGKIFRTYHQMVLHSRVHRRARRERDSGDRAARARCGSL
EGDSASQPSSPGSACAAADSPGSLADEAAEDSGEEGAPEPAPGGQPRRCCFSEEVTSTELSSGDQSHKM
GDNASERDTGESKAGIAASVSILENSRETSTRQEQHRFSMDLKMPAFHPKQEVVPVGDGVEFPSSTGAE
GQTGHPAEKLSDLHNKEHSGGKRALAPDLMPLDLSARSTRDDPSNKETASSLQAALVVHPCPYCSHKTY
YPEVLWMHKRIWHRVSCNSVAPPWIIQPNGYKSIRSNLVFLSRSGRTGPPPALGGKECQPLLLARFTRTQV
PGGMPGSKSGSSPLGVVTKAASMPKNKESHSGGPCALWAPGPDGYRQTKPCHGQEPHGAATQGPLAKPRQ
EASSKVPVAPGGGFSRSATPTPTVIARAGAQPSANSKPVKFGVPPAGAGFAPTNKHSAPDSLAKFSA
QPQGPAPKGEAGAPLPPREPPSKAAQELRRLATCAAGSRGDAALQAQPGVAGAPPVLHSIKQEPVAEG
HEKRLDILNIFKTYIPKDFATLYQGWGVSGLPGLHRTLRQARPGFVCIIECGKSFHQPHLRAHMRAH
SVVFESDGPGRSEVHTTSADAPKQGRDHSNTGTVQTVPLRKGK
```

SGPTRRRLEQKLISEEDLAANDILDYKDDDDKV

Chromatograms: https://cdn.origene.com/chromatograms/mk8043_c05.zip

Restriction Sites: SgfI-RsrII

Cloning Scheme:

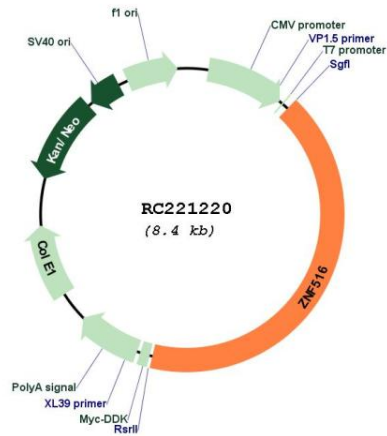


ACCN: NM_014643

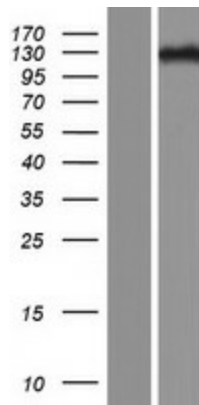
ORF Size: 3489 bp

OTI Disclaimer:	<p>Due to the inherent nature of this plasmid, standard methods to replicate additional amounts of DNA in E. coli are highly likely to result in mutations and/or rearrangements. Therefore, OriGene does not guarantee the capability to replicate this plasmid DNA. Additional amounts of DNA can be purchased from OriGene with batch-specific, full-sequence verification at a reduced cost. Please contact our customer care team at custsupport@origene.com or by calling 301.340.3188 option 3 for pricing and delivery.</p> <p>The molecular sequence of this clone aligns with the gene accession number as a point of reference only. However, individual transcript sequences of the same gene can differ through naturally occurring variations (e.g. polymorphisms), each with its own valid existence. This clone is substantially in agreement with the reference, but a complete review of all prevailing variants is recommended prior to use. More info</p>
OTI Annotation:	<p>This clone was engineered to express the complete ORF with an expression tag. Expression varies depending on the nature of the gene.</p>
Components:	<p>The ORF clone is ion-exchange column purified and shipped in a 2D barcoded Matrix tube containing 10ug of transfection-ready, dried plasmid DNA (reconstitute with 100 ul of water).</p>
Reconstitution Method:	<ol style="list-style-type: none">1. Centrifuge at 5,000xg for 5min.2. Carefully open the tube and add 100ul of sterile water to dissolve the DNA.3. Close the tube and incubate for 10 minutes at room temperature.4. Briefly vortex the tube and then do a quick spin (less than 5000xg) to concentrate the liquid at the bottom.5. Store the suspended plasmid at -20°C. The DNA is stable for at least one year from date of shipping when stored at -20°C.
RefSeq:	<p>NM_014643.1, NP_055458.1</p>
RefSeq Size:	<p>6033 bp</p>
RefSeq ORF:	<p>3492 bp</p>
Locus ID:	<p>9658</p>
UniProt ID:	<p>Q92618</p>
Cytogenetics:	<p>18q23</p>
MW:	<p>124.1 kDa</p>
Gene Summary:	<p>Zinc-finger proteins bind nucleic acids and play important roles in various cellular functions, including cell proliferation, differentiation, and apoptosis. This gene encodes a zinc-finger protein, and belongs to the krueppel C2H2-type zinc-finger protein family. It may be involved in transcriptional regulation. [provided by RefSeq, Sep 2012]</p>

Product images:



Circular map for RC221220



Western blot validation of overexpression lysate (Cat# [LY415147]) using anti-DDK antibody (Cat# [TA50011-100]). Left: Cell lysates from untransfected HEK293T cells; Right: Cell lysates from HEK293T cells transfected with RC221220 using transfection reagent MegaTran 2.0 (Cat# [TT210002]).