

Product datasheet for **RC221211**

ANKRD55 (NM_024669) Human Tagged ORF Clone

Product data:

Product Type:	Expression Plasmids
Product Name:	ANKRD55 (NM_024669) Human Tagged ORF Clone
Tag:	Myc-DDK
Symbol:	ANKRD55
Mammalian Cell Selection:	Neomycin
Vector:	pCMV6-Entry (PS100001)
E. coli Selection:	Kanamycin (25 ug/mL)



[View online »](#)

ORF Nucleotide Sequence:

>RC221211 representing NM_024669
 Red=Cloning site Blue=ORF Green=Tags(s)

TTTTGTAATACGACTCACTATAGGGCGGCCGGGAATTCGTCGACTGGATCCGGTACCGAGGAGATCTGCC
 GCC**CGGATCGCC**

ATGATGAGACAGGCTACCATGGATTTACGACCCCTTCTGTGTTGATCAGCAAAGAGGTGACTCATCTG
 AGGAAGTTGACCTGACCATGGTTTATCAAGCAGCCTCTAATGGAGATGTCAATGCTCTGACTGCAGTGAT
 TCGGGAAGACCCTTCTATCCTAGAAATGCTGTGACAGTGAAGGATGCACGCCCTTGATGCATGCGGTTTCT
 GGACGTCAAGCGGACACAGTGAAGCTGCTGTTGAAGATGGGAGCCAATATTAACATGCAGGATGCTTATG
 GCCGCACAAGTTTATGCCTGGCCACCTACCTGGGCTGGCTTGAAGGCTGTGTGAGTCTACTCAGAAACGG
 TGCCAAGCACAATATCCAGATAAAAAATGGCCGCTGCCACTGCATGCTGCCACTGCTGAGCCCGATATG
 AGGCTCCTCACGGTCTGTTGCAACAGTGAACATCAGCGAGATTAATCACCAGGACAATGAGGGAATGA
 CACCCTCCACTGGCGGCTTTCCACAACAGCCTCAACACACAAAATGCTGCTGAAGAAGGGGGCAGA
 CCCACCTTGTGGATAAAGACTTTAAAACCGCTCTCCACTGGGAGTCCAGAGTGGAAATAGGATTCTG
 TGCTCCATCATTCTGAGCCATCACCAGGGGCCCTCAATCAACTATGATGATGAGAGTGGGAAGACAT
 GTGTACATATCGCAGCGGACGCGGCTTCAGCGATATTATTCATGAGCTGGCAAGAGTCCCTGAGTGTA
 CCTGCAGGCTCTGGATGTGGATGACAGGACACCTCTGCACTGGGCTGCAGCTGCAGGGAAGGCCAATGT
 GTCCAGTCACTGCTGGAGTTGGGAATGGACAGCAACCTGCGGGACATCAATGAGAGCACGCCCTTGGCCT
 ATGCCCTGTAAGTGCAGCGGCTGTGTCAAACCTCTCTCCCAAGAGAGCAGAACAGAGCCTACTCG
 ACCCCCTCCCTCCAGAGCAGTCGGCCCCAGAAGAAGGAGAGACGGTTCAACGTGCTCAACCAATATTC
 TGCAAAAAACAAGAAAGAAGAGCAGAGAGCCCATCAGAAGGATCCAGCAGGAGCCGATACAGAGAGGAGG
 ACACCTCAGAAGTCAATGACATCATCACCACCTTTGATAGCATCGTGGGTACCAACTGCCAAGAACAGCC
 TGGTGATCAGGTGGCTATGGTTGAATTTAAGAAGAAAACCTCAGACAATTCAAAAATCTCTTACCAGAA
 AAGAAAACCGCTGGCCGTAAGGGCTTCCACCAATCAGAACGCAGAGTCTCCACCCATCACCCTGGGCA
 ATAACCTCCTAACAGCCTCCCATAGGGCCACTCCCATGCAGGCTGAGCTCTGCTCCTCATCATATGGC
 CCAGCGATCTCAGAAAAGTGAAGTGAAGTGAAGTGAAGTGAAGTGAAGTGAAGTGAAGTGAAGTGAAGT
 GATAACCCCTGGAAGAGTGATTCTAATCAGGATTTTCTACAAAGTTGGACTGTGTCTTCTTCTGATA
 AGCTGCTGGACAGATTGCTCAGTGTCCGGCTGGTACCAAGAGGTCTCCGTGCCACCACACCTTCGCCA
 TCTACATAATCCATCATCAGGACAAAATTTTTCAGCATCTTCCCCAACAGACACAAAATCAGGGATCTT
 CCTTTCCTCGGAACAACCTAGCTCCCCTACCAGATCAAAAATTTCTATCTGGAGAACCTCTGCGGACAA
 ACCGAGTCTTCTGCAATTCGAAGTCAACGAAGACACAGCACAGCAGCAGAAGAGAGTGAACATTTCTG
 CAACCCACCAAGTATGAAAAAT

ACGCGTACGCGGCCGCTCGAGCAGAAACTCATCTCAGAAGAGGATCTGGCAGCAAATGATATCCTGGATT
 ACAAGGATGACGACGATAAGGTTTAA

Protein Sequence:

>RC221211 representing NM_024669
 Red=Cloning site Green=Tags(s)

MMRQATMDFSTPSVFDQQRGDSSEEVDLTMVYQAASNGDVNALTAVIREDPSILECCDSEGCTPLMHA
 VSRQADTVKLLKMGANINMQDAYGRTSLCLATYLGWLEGCVSLLRNGAKHNIPDKNGRLPLHAATAEPDM
 RLLTVLLQQSNISEINHQDNEGMPLHWAFAHNQPHQMLLKKGADPTLVDFKFTALHWAVQSGNRIL
 CSIILSHHQGPSIINYDDESGKTCVHIAAAGFSDIHELARVPECNLQALDVEDRTPHWAAGKAEC
 VQSLLELGMSNLRDINESTPLAYALYCHTACVKLLSQESRTEPTRPPPSQSSRPQKKERRFVNLNQIF
 CKNKKEEQRAHQKDPDRDYREEDTSEVNDIITTFDSIVGTNCQEQPGDQVAMVEFKKTSDNSKYLLPE
 KKPLARKGLPPIRTQSLPPIITLGNFLTASHRATSHAGLSSAPHHMAQRSQKSRSEQDLLNRTGCQMLL
 DNPWKSNSNQVFSYKVTWVSSDKLLDRLLSVRPGHQEVSPPHLRHLHNPSSGQNFQHLSPNRHKIRD
 LPTFRNLLAPLPDQKFLSPEPLRTRNRPVLAIPSRRHSTAAEESHSANPTSDEN

TRTRPLEQKLISEEDLAANDILDYKDDDDKV

Chromatograms:

https://cdn.origene.com/chromatograms/mk8043_b07.zip

Restriction Sites: SgfI-MluI

Cloning Scheme:



ACCN: NM_024669

ORF Size: 1842 bp

OTI Disclaimer: The molecular sequence of this clone aligns with the gene accession number as a point of reference only. However, individual transcript sequences of the same gene can differ through naturally occurring variations (e.g. polymorphisms), each with its own valid existence. This clone is substantially in agreement with the reference, but a complete review of all prevailing variants is recommended prior to use. [More info](#)

OTI Annotation: This clone was engineered to express the complete ORF with an expression tag. Expression varies depending on the nature of the gene.

Components: The ORF clone is ion-exchange column purified and shipped in a 2D barcoded Matrix tube containing 10ug of transfection-ready, dried plasmid DNA (reconstitute with 100 ul of water).

Reconstitution Method:

1. Centrifuge at 5,000xg for 5min.
2. Carefully open the tube and add 100ul of sterile water to dissolve the DNA.
3. Close the tube and incubate for 10 minutes at room temperature.
4. Briefly vortex the tube and then do a quick spin (less than 5000xg) to concentrate the liquid at the bottom.
5. Store the suspended plasmid at -20°C. The DNA is stable for at least one year from date of shipping when stored at -20°C.

RefSeq: [NM_024669.3](#)

RefSeq Size: 2502 bp

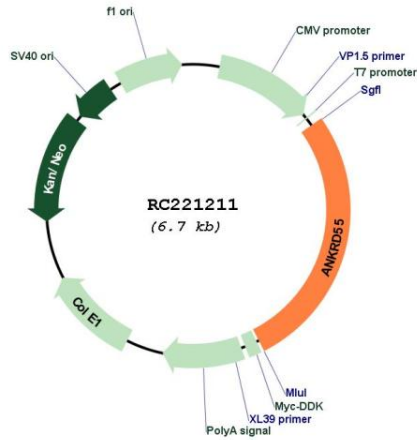
RefSeq ORF: 1845 bp

Locus ID: 79722

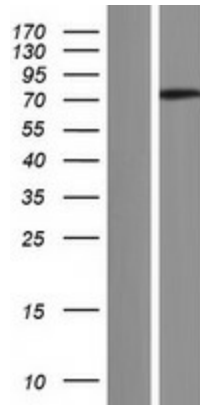
UniProt ID: [Q3KP44](#)

Cytogenetics: 5q11.2
 MW: 68.2 kDa

Product images:



Circular map for RC221211



Western blot validation of overexpression lysate (Cat# [LY411185]) using anti-DDK antibody (Cat# [TA50011-100]). Left: Cell lysates from untransfected HEK293T cells; Right: Cell lysates from HEK293T cells transfected with RC221211 using transfection reagent MegaTran 2.0 (Cat# [TT210002]).