

Product datasheet for **RC221203**

GPR52 (NM_005684) Human Tagged ORF Clone

Product data:

Product Type: Expression Plasmids
Product Name: GPR52 (NM_005684) Human Tagged ORF Clone
Tag: Myc-DDK
Symbol: GPR52
Mammalian Cell Selection: Neomycin
Vector: pCMV6-Entry (PS100001)
E. coli Selection: Kanamycin (25 ug/mL)
ORF Nucleotide Sequence: >RC221203 representing NM_005684
Red=Cloning site Blue=ORF Green=Tags(s)

TTTTGTAATACGACTCACTATAGGGCGGCCGGAATTCGTCGACTGGATCCGGTACCGAGGAGATCTGCC
GCC**CGATCGCC**

ATGAATGAATCCAGGTGGACTGAATGGAGGATCCTGAACATGAGCAGTGGCATTGTGAATGTGTCCGAGC
GTCACCTCTGCCACTTGGATTTGGCCACTACAGTGTGGTGGATGTCTGCATCTTCGAGACAGTGGTTAT
TGTGTTGCTGACATTTCTGATCATTGCTGGGAATCTAACAGTTATCTTTGCTTTTCATTGTGCTCCACTG
TTACATCATTATACTACCAGCTATTTTCATTACAGCAGTGGCATATGCTGATCTTTTCGTTGGAGTTAGCT
GCTTGGTTCCACTCTGTCACCTTCCACTCCACAGGTGCCACAGTCATTGACTTGCAGGTTTT
TGGATATATCATCTCAGTTCTAAAAAGTTTTCTATGGCATGTCTTGCTTGCATCAGTGTGGATCGTTAT
CTTGCAATAACCAAGCCTCTTCTACAATCAACTGGTCAACCCTTGTCGCTTGAGAATTTGCATTATTT
TGATCTGGATCTACTCCTGCCTAATTTTCTTGCCTTCTTTTTGGCTGGGGAAACCTGGTTACCATGG
TGACATTTTGAATGGTGTGCCACGTCTGGCTCACCAGTGCCTATTTTACTGGCTTTATTGTTTGTTTA
CTTTATGCTCCTGCTGCCTTTGTGTCTGCTTCACTTACTTCCACATTTTCAAATTTGCCGTGAGCACA
CCAAAGAGATAAATGACCGAAGAGCCCGATTCCCTAGTCATGAGGTAGATTCTTCCAGAGAGACTGGACA
CAGCCCTGACCGTCGCTACGCCATGGTTTTGTTTAGGATAACCAGTGTATTTTATGCTGTGGCTCCCC
TATATAATTTACTTTCTCTAGAAAGCTCCCGGTCTTGGACAATCCAACCTCTGCTCTTCTTAACAACCT
GGCTTGAATAAGTAATAGTTTTTGAACCTGTGTAAATACAGCCTCTCCAACAGCGTTTTCCGGCTAGG
CCTCCGAAGACTGTCTGAGACAATGTGCACATCTGTATGTGTGAAGGATCAGGAAGCACAAGAACCC
AAACCTAGGAAACGGGCTAATCTTGCTCCATT

ACGCGTACGCGGCCGCTCGAGCAGAACTCATCTCAGAAGAGGATCTGGCAGCAAATGATATCCTGGATT
ACAAGGATGACGACGATAAGGTTTAA



[View online »](#)

Protein Sequence: >RC221203 representing NM_005684
Red=Cloning site Green=Tags(s)

MNESRWTEWRILNMSSGIVNVSERHSCPLGFGHYSVVDVCIFETVVIVLLTFLIIAGNLTVIFVFHCAPL
 LHYYTTSYFIQTMAYADLFVGVSLVPTLSLLHYSTGVHESLTCQVFGYIISVLKSVSMAACLACISVDRY
 LAITKPLSYNQLVTPCRLRICIILIWIYSCLIFLPSFFGWGKPGYHGDIFEWCATSWLTSAYFTGFIVCL
 LYAPAAFVVCFTYFHIFKICRQHTKEINDRRARFPSSHEVDSRETGHSPDRRYAMVLFRITSVFYMLWLP
 YIIYFLLSSRVLDPNPTLSFLTTLWLAISNSFCNCVIYLSNSVFRLGLRRLSETMCTSCMCVKDQEAQEP
 KPRKRANSCSI

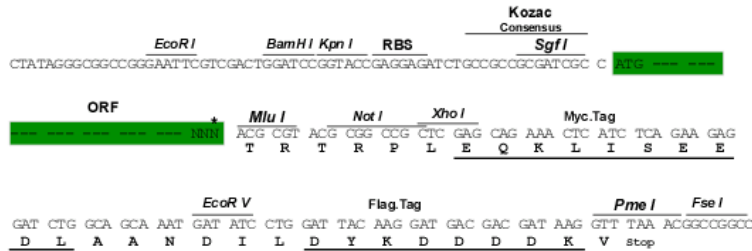
TRTRPLEQKLISEEDLAANDILDYKDDDDKV

Chromatograms: https://cdn.origene.com/chromatograms/mk8116_d03.zip

Restriction Sites: SgfI-MluI

Cloning Scheme:

Cloning sites used for ORF Shuttling:



* The last codon before the Stop codon of the ORF

ACCN: NM_005684

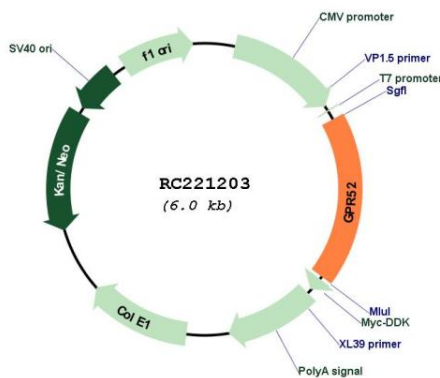
ORF Size: 1083 bp

OTI Disclaimer: Due to the inherent nature of this plasmid, standard methods to replicate additional amounts of DNA in E. coli are highly likely to result in mutations and/or rearrangements. Therefore, OriGene does not guarantee the capability to replicate this plasmid DNA. Additional amounts of DNA can be purchased from OriGene with batch-specific, full-sequence verification at a reduced cost. Please contact our customer care team at custsupport@origene.com or by calling 301.340.3188 option 3 for pricing and delivery.

The molecular sequence of this clone aligns with the gene accession number as a point of reference only. However, individual transcript sequences of the same gene can differ through naturally occurring variations (e.g. polymorphisms), each with its own valid existence. This clone is substantially in agreement with the reference, but a complete review of all prevailing variants is recommended prior to use. [More info](#)

OTI Annotation:	This clone was engineered to express the complete ORF with an expression tag. Expression varies depending on the nature of the gene.
Components:	The ORF clone is ion-exchange column purified and shipped in a 2D barcoded Matrix tube containing 10ug of transfection-ready, dried plasmid DNA (reconstitute with 100 ul of water).
Reconstitution Method:	<ol style="list-style-type: none"> 1. Centrifuge at 5,000xg for 5min. 2. Carefully open the tube and add 100ul of sterile water to dissolve the DNA. 3. Close the tube and incubate for 10 minutes at room temperature. 4. Briefly vortex the tube and then do a quick spin (less than 5000xg) to concentrate the liquid at the bottom. 5. Store the suspended plasmid at -20°C. The DNA is stable for at least one year from date of shipping when stored at -20°C.
RefSeq:	<u>NM_005684.5</u>
RefSeq Size:	1472 bp
RefSeq ORF:	1086 bp
Locus ID:	9293
UniProt ID:	<u>Q9Y2T5</u>
Cytogenetics:	1q25.1
Protein Families:	Druggable Genome, GPCR, Transmembrane
MW:	41.4 kDa
Gene Summary:	Members of the G protein-coupled receptor (GPR) family play important roles in signal transduction from the external environment to the inside of the cell.[supplied by OMIM, Jul 2002]

Product images:



Circular map for RC221203