

Product datasheet for **RC221190L1V**

CRLF2 (NM_022148) Human Tagged ORF Clone Lentiviral Particle

Product data:

Product Type:	Lentiviral Particles
Product Name:	CRLF2 (NM_022148) Human Tagged ORF Clone Lentiviral Particle
Symbol:	CRLF2
Synonyms:	CRLF2; CRLF2Y; TSLPR
Mammalian Cell Selection:	None
Vector:	pLenti-C-Myc-DDK (PS100064)
Tag:	Myc-DDK
ACCN:	NM_022148
ORF Size:	1110 bp
ORF Nucleotide Sequence:	The ORF insert of this clone is exactly the same as(RC221190).
OTI Disclaimer:	The molecular sequence of this clone aligns with the gene accession number as a point of reference only. However, individual transcript sequences of the same gene can differ through naturally occurring variations (e.g. polymorphisms), each with its own valid existence. This clone is substantially in agreement with the reference, but a complete review of all prevailing variants is recommended prior to use. More info
OTI Annotation:	This clone was engineered to express the complete ORF with an expression tag. Expression varies depending on the nature of the gene.
RefSeq:	NM_022148.2
RefSeq Size:	1579 bp
RefSeq ORF:	1116 bp
Locus ID:	64109
UniProt ID:	Q9HC73
Cytogenetics:	X;Y
Protein Families:	Druggable Genome, Secreted Protein, Transmembrane
Protein Pathways:	Cytokine-cytokine receptor interaction, Jak-STAT signaling pathway

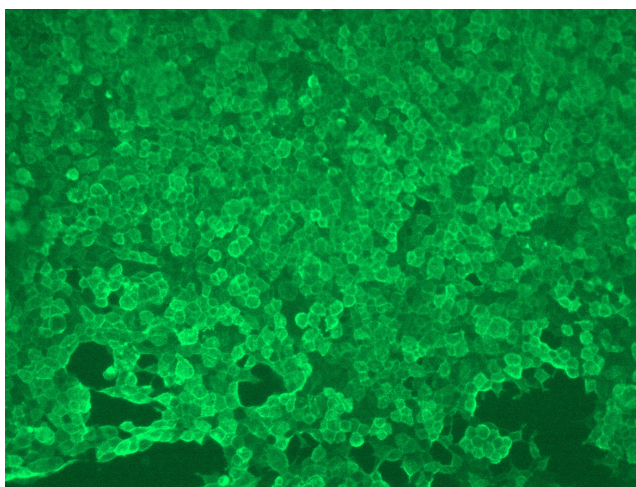


[View online »](#)

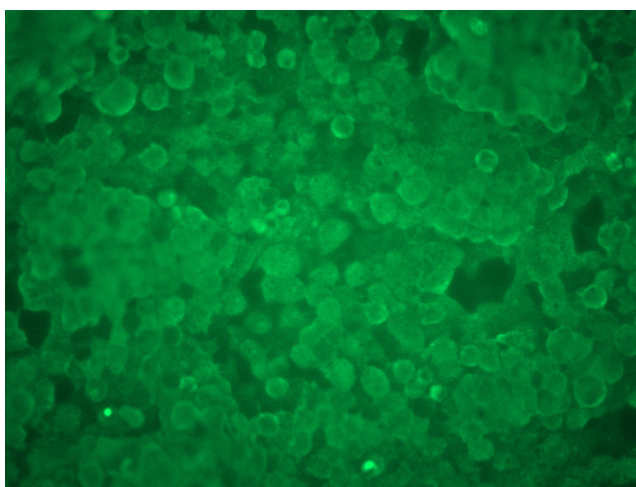
MW: 41.8 kDa

Gene Summary: This gene encodes a member of the type I cytokine receptor family. The encoded protein is a receptor for thymic stromal lymphopoietin (TSLP). Together with the interleukin 7 receptor (IL7R), the encoded protein and TSLP activate STAT3, STAT5, and JAK2 pathways, which control processes such as cell proliferation and development of the hematopoietic system. Rearrangement of this gene with immunoglobulin heavy chain gene (IGH) on chromosome 14, or with P2Y purinoceptor 8 gene (P2RY8) on the same X or Y chromosomes is associated with B-progenitor acute lymphoblastic leukemia (ALL) and Down syndrome ALL. Alternatively spliced transcript variants have been found for this gene. [provided by RefSeq, Sep 2014]

Product images:



[RC221190L1] was used to prepare Lentiviral particles using [TR30037] packaging kit. HEK293T cells were transduced with RC221190L1V particle to overexpress human CRLF2-Myc-DDK fusion protein.



[RC221190L1] was used to prepare Lentiviral particles using [TR30037] packaging kit. HEK293T cells were transduced with RC221190L1V particle to overexpress human CRLF2-Myc-DDK fusion protein.