

Product datasheet for RC221190

CRLF2 (NM_022148) Human Tagged ORF Clone

Product data:

Product Type: Expression Plasmids
Product Name: CRLF2 (NM_022148) Human Tagged ORF Clone
Tag: Myc-DDK
Symbol: CRLF2
Synonyms: CRL2; CRLF2Y; TSLPR
Mammalian Cell Selection: Neomycin
Vector: pCMV6-Entry (PS100001)
E. coli Selection: Kanamycin (25 ug/mL)
ORF Nucleotide Sequence: >RC221190 representing NM_022148
 Red=Cloning site Blue=ORF Green=Tags(s)

TTTTGTAATACGACTCACTATAGGGCGGCCGGAATTCGTCGACTGGATCCGGTACCGAGGAGATCTGCC
 GCC**CGATCGCC**

ATGGGGCGGCTGGTTCTGCTGTGGGAGCTGCCGTCTTTCTGCTGGGAGGCTGGATGGCTTTGGGGCAAG
 GAGGAGCAGAAGGAGTACAGATTCAGATCATCTACTTCAATTTAGAAACCGTGCAGGTGACATGGAATGC
 CAGCAAATACTCCAGGACCAACCTGACTTTCCACTACAGATTC AACGGTATGAGGCCTATGACCAGTGC
 ACCAACTACCTTCTCCAGGAAGTACACTTCGGGGTGCCTCCTAGACGCAGAGCAGCGAGACGACATTC
 TCTATTTCTCCATCAGGAATGGGACGCACCCCGTTTTCCACGCAAGTCGCTGGATGGTTTATTACCTGAA
 ACCCAGTTCGCCGAAGCACGTGAGATTTTCGTGGCATCAGGATGCAGTGACGGTGACGTGTTCTGACCTG
 TCCTACGGGGATCTCCTCTATGAGGTTCACTACCGGAGCCCTTCGACACCGAGTGGCAGTCCAAACAGG
 AAAATACCTGCAACGTACCATAGAAGGCTTGGATGCCGAGAAGTGTTACTCTTTCTGGGTGAGGGTGAA
 GGCTATGGAGGATGTATATGGGCCAGACACATACCCAAGCGACTGGTCAGAGGTGACATGCTGGCAGAGA
 GGCGAGATTCGGGATGCCTGTGCAGAGACACCAACGCCTCCCAAACAAAGCTGTCCAAATTTATTTAA
 TTTCCAGCCTGGCCATCCTTCTGATGGTGTCTCTCCTCCTTCTGTCTTTATGAAATATGGAGAGTGAG
 GAAGTTTCTCATTCCCAGCGTGCCAGACCCGAAATCCATCTTCCCAGGCTCTTTGAGATACACCAAGGG
 AACTTCCAGGAGTGGATCAGACACCCAGAACGTGGCCACCTCCACAAGATGGCAGGTGCAGAGCAAG
 AAAGTGGCCCGAGGAGCCCTGGTAGTCCAGTTGGCCAAGACTGAAGCCGAGTCTCCAGGATGCTGGA
 CCCACAGACCGAGGAGAAAGAGGCTCTGGGGATCCCTCCAGCTTCCCACAGCCCTCCAAGCGGT
 GATGTGTCACAATCGGGGGCTTCACTTTGTGATGAATGACCGCTCCTACGTGGCGTTG

ACGCGTACGCGGCCGCTCGAGCAGAACTCATCTCAGAAGAGGATCTGGCAGCAAATGATATCCTGGATT
 ACAAGGATGACGACGATAAGGTTAA



[View online »](#)

Protein Sequence: >RC221190 representing NM_022148
Red=Cloning site Green=Tags(s)

MGRLVLLWGA AVFLLGGWMLGQGGAEVQIQIIYFNLETVQVTWNASKYSRTNLTFFHYRFGDEAYDQC
 TNYLLQEGHTSGCLLDAEQRDDILYFSIRNGTHPVFTASRWMVYLLKPSSPKHVRFSWHQDAVTVTCSDL
 SYGDLLYEVQYRSPFDTEWQSKQENTCNVTIEGLDAEKCYSFVWRVKAMEDVYGPDTYPSDWSEVTCWQR
 GEIRDACAETPTPPKPKLSKFILISSLAILLMVSLLLLSLWKLWRVRKFLIPSVDPKSIFFPLFEIHQG
 NFQEWITDQTQNV AHLHKMAGAEQESGPEEPLVVQLAKTEAESPRMLDPQTTEEKEASGGSLLQLPHQLQGG
 DVVTIGGFTFVMNDRSYAL

TRTRPLEQKLISEEDLAANDILDYKDDDDKVV

Chromatograms: https://cdn.origene.com/chromatograms/mk6098_b10.zip

Restriction Sites: SgfI-MluI

Cloning Scheme:

Cloning sites used for ORF Shuttling:



* The last codon before the Stop codon of the ORF

ACCN: NM_022148

ORF Size: 1110 bp

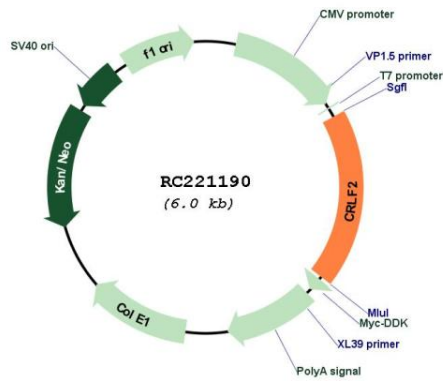
OTI Disclaimer: The molecular sequence of this clone aligns with the gene accession number as a point of reference only. However, individual transcript sequences of the same gene can differ through naturally occurring variations (e.g. polymorphisms), each with its own valid existence. This clone is substantially in agreement with the reference, but a complete review of all prevailing variants is recommended prior to use. [More info](#)

OTI Annotation: This clone was engineered to express the complete ORF with an expression tag. Expression varies depending on the nature of the gene.

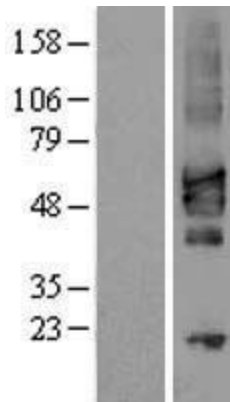
Components: The ORF clone is ion-exchange column purified and shipped in a 2D barcoded Matrix tube containing 10ug of transfection-ready, dried plasmid DNA (reconstitute with 100 ul of water).

Reconstitution Method:	<ol style="list-style-type: none">1. Centrifuge at 5,000xg for 5min.2. Carefully open the tube and add 100ul of sterile water to dissolve the DNA.3. Close the tube and incubate for 10 minutes at room temperature.4. Briefly vortex the tube and then do a quick spin (less than 5000xg) to concentrate the liquid at the bottom.5. Store the suspended plasmid at -20°C. The DNA is stable for at least one year from date of shipping when stored at -20°C.
Note:	Plasmids are not sterile. For experiments where strict sterility is required, filtration with 0.22um filter is required.
RefSeq:	NM_022148.4
RefSeq Size:	1579 bp
RefSeq ORF:	1116 bp
Locus ID:	64109
UniProt ID:	Q9HC73
Cytogenetics:	X;Y
Protein Families:	Druggable Genome, Secreted Protein, Transmembrane
Protein Pathways:	Cytokine-cytokine receptor interaction, Jak-STAT signaling pathway
MW:	41.8 kDa
Gene Summary:	<p>This gene encodes a member of the type I cytokine receptor family. The encoded protein is a receptor for thymic stromal lymphopoietin (TSLP). Together with the interleukin 7 receptor (IL7R), the encoded protein and TSLP activate STAT3, STAT5, and JAK2 pathways, which control processes such as cell proliferation and development of the hematopoietic system. Rearrangement of this gene with immunoglobulin heavy chain gene (IGH) on chromosome 14, or with P2Y purinoceptor 8 gene (P2RY8) on the same X or Y chromosomes is associated with B-progenitor acute lymphoblastic leukemia (ALL) and Down syndrome ALL. Alternatively spliced transcript variants have been found for this gene. [provided by RefSeq, Sep 2014]</p>

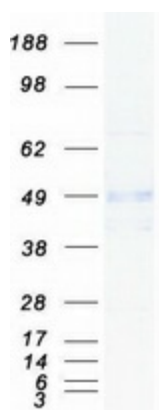
Product images:



Circular map for RC221190



Western blot validation of overexpression lysate (Cat# [LY411736]) using anti-DDK antibody (Cat# [TA50011-100]). Left: Cell lysates from untransfected HEK293T cells; Right: Cell lysates from HEK293T cells transfected with RC221190 using transfection reagent MegaTran 2.0 (Cat# [TT210002]).



Coomassie blue staining of purified CRLF2 protein (Cat# [TP321190]). The protein was produced from HEK293T cells transfected with CRLF2 cDNA clone (Cat# RC221190) using MegaTran 2.0 (Cat# [TT210002]).