

Product datasheet for **RC221187**

HS6ST3 (NM_153456) Human Tagged ORF Clone

Product data:

Product Type:	Expression Plasmids
Product Name:	HS6ST3 (NM_153456) Human Tagged ORF Clone
Tag:	Myc-DDK
Symbol:	HS6ST3
Synonyms:	HS6ST-3
Mammalian Cell Selection:	Neomycin
Vector:	pCMV6-Entry (PS100001)
E. coli Selection:	Kanamycin (25 ug/mL)



[View online »](#)

ORF Nucleotide Sequence:

>RC221187 representing NM_153456
 Red=Cloning site Blue=ORF Green=Tags(s)

TTTTGTAATACGACTCACTATAGGGCGGCCGGAATTCGTCGACTGGATCCGGTACCGAGGAGATCTGCC
 GCC**CGGATCGCC**

ATGGATGAAAGGTTCAACAAGTGGCTGCTGACGCCGGTGTCTACTCTCCTCTTCGTGGTCATCATGTACC
 AGTACGTGTCCCCTCCTGCACCAGCTCCTGCACCAACTTCGGGGAGCAGCCCGCGCGGGGAGGCCGG
 CCCGCCCGCGTCCCGGGTCCCGCCCGCGGGCTCAGGCGCCCGGAGGAGTGGGAGCGCGGCCCCAG
 TTGCCCCCGCGCCCGGGGGCCCCGAGGGACCTCGGGGGCCCGCGCGCGGAGGAGGAGGACGAGG
 AGCCCGGAGACCCCGGGAGGGGAGGAAGAGGAGGAGGAAGACGAGCCGACCCGAGGCCCGGAAAA
 CGGCTCCTGCCCGATTCTGTCGCGCTTCAACTTCAGCCTGAAGGACCTGACCCGCTTCGTGGATTTT
 AACATCAAAGGGCGGACGTGATCGTGTCTCCACATCCAGAAGACGGGGGACCACTTTCCGCCGGC
 ACCTGGTGAAGAACATCCGGCTGGAGCAGCCTTGTAGCTGCAAAGCGGGTCAAGAAGTGCACCTGCCA
 CCGGCCTGGCAAGAAGGAGACGTGGCTTCTCTCCCGCTTCCACCGGCTGGAGCTGCGGGCTGCACGCC
 GACTGGACGGAGCTACCAACTGCGTGCAGCCATCATGGAGAAGAAGGACTGTCCCGCAACCACAGCC
 ACACCAGGAATTTCTATTACATACAATGTTACGGGATCCAGTGTACGTTACCTGAGCGAGTGGAAACA
 TGTCCAGAGAGGGGCCACTTGGAAAACCTCTTTCATATGTGTGATGGAAGAAGCCACCCAGATGAG
 CTGCTACCTGCTACCCTGGGGATGACTGGTCTGGGGTCACTTTCGGGAGTTTATGGATTGCACCTACA
 ACCTGGCTAACATCGCCAGGTGCGCATGCTGGCTGACCTCAGCCTGGTGGGCTGCTATAACTTGACTTT
 CATGAACGAGAGTGAAGAAACACCATCCTGTTGAGAGTGAAGAACAACCTGAAGAATGGCCTTC
 TTTGGGCTCACTGAGTTCCAGAGGAAGACAGTTTCTCTTTGAGAGAACATTCAACCTCAAGTTTCTCT
 CCCCTTACACAGTTCAACATCACGCGGGCTTCAACGTGGAGATCAACGAGGGTCCCGCCCAACGCAT
 TGAGGATCTAAACTTCTGACATGCAGCTTACGAGTATGCAAAAGATCTCTTCCAGCAGCGCTACCCAC
 CACACCAAGCAGCTAGAGCACCAGAGGGACCGCCAGAAGCGCGGGAGGAGCGGAGGCTGCACGAGAGC
 ACAGGGACCACAGTGGCCCAAAGAAGATGGGGCTGCAGAAGGGACTGTACCGAGGACTACAACAGCCA
 GGTGGTGAGATGG

ACGCGTACGCGGCCGCTCGAGCAGAAACTCATCTCAGAAGAGGATCTGGCAGCAATGATATCCTGGATT
 ACAAGGATGACGACGATAAGGTTTAA

Protein Sequence:

>RC221187 representing NM_153456
 Red=Cloning site Green=Tags(s)

MDERFNKWLTPVLTLLFVIMYQYVSPSCTSSCTNFGEQPRAGEAGPPAVPGPARRAQAPPEEWERRPQ
 LPPPPRGPPEGRGAAAPEEDEEPDPRGEEEEDEPDPEAPENGLPRFVPRFNFSLKDLTRFVDF
 NIKGRDIVFLHIQKTGGTTFGRHLVKNIRLEQPCSKAGQKKCTCHRPKKETWLF SRFSTGWSCGLHA
 DWTELTNCVPAIMEKKDCPRNHSRTRNFYITMLRDPVSRYLSEWKHVQRGATWKTSLHMCDGRSPTPDE
 LPTCYPGDDWSGVSREFMDCTYNLANNRQVRMLADLSLVGCYNLTFMNESERNITLLQSAKNNLNMAF
 FGLTEFQRKTQFLFERTFNLFISPFTQFNITRASNVEINEGARQRIEDLNFLDMQLYEYAKDLFQQRYH
 HTKQLEHQDRQKRREERRLQREHRDHQWPKEDGAAEGVTEDYNSQVVRW

TRTRPLEQKLISEEDLAANDILDYKDDDDKV

Chromatograms:

https://cdn.origene.com/chromatograms/mk8012_g01.zip

Restriction Sites:

Sgfl-MluI

Cloning Scheme:


ACCN: NM_153456

ORF Size: 1413 bp

OTI Disclaimer: Due to the inherent nature of this plasmid, standard methods to replicate additional amounts of DNA in E. coli are highly likely to result in mutations and/or rearrangements. Therefore, OriGene does not guarantee the capability to replicate this plasmid DNA. Additional amounts of DNA can be purchased from OriGene with batch-specific, full-sequence verification at a reduced cost. Please contact our customer care team at custsupport@origene.com or by calling 301.340.3188 option 3 for pricing and delivery.

The molecular sequence of this clone aligns with the gene accession number as a point of reference only. However, individual transcript sequences of the same gene can differ through naturally occurring variations (e.g. polymorphisms), each with its own valid existence. This clone is substantially in agreement with the reference, but a complete review of all prevailing variants is recommended prior to use. [More info](#)

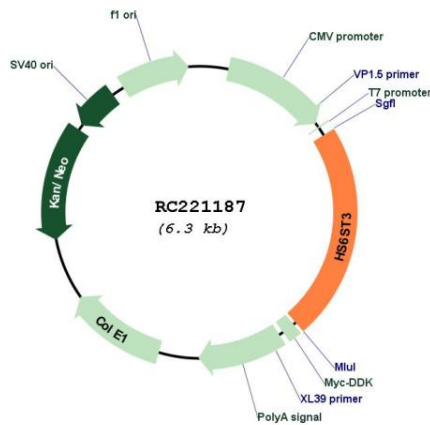
OTI Annotation: This clone was engineered to express the complete ORF with an expression tag. Expression varies depending on the nature of the gene.

Components: The ORF clone is ion-exchange column purified and shipped in a 2D barcoded Matrix tube containing 10ug of transfection-ready, dried plasmid DNA (reconstitute with 100 ul of water).

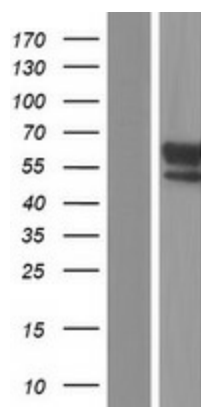
- Reconstitution Method:**
1. Centrifuge at 5,000xg for 5min.
 2. Carefully open the tube and add 100ul of sterile water to dissolve the DNA.
 3. Close the tube and incubate for 10 minutes at room temperature.
 4. Briefly vortex the tube and then do a quick spin (less than 5000xg) to concentrate the liquid at the bottom.
 5. Store the suspended plasmid at -20°C. The DNA is stable for at least one year from date of shipping when stored at -20°C.

RefSeq: [NM_153456.3](#)
RefSeq Size: 7817 bp
RefSeq ORF: 1416 bp
Locus ID: 266722
UniProt ID: [Q8IZP7](#)
Cytogenetics: 13q32.1
Protein Families: Transmembrane
Protein Pathways: Heparan sulfate biosynthesis
MW: 54.7 kDa
Gene Summary: Heparan sulfate (HS) sulfotransferases, such as HS6ST3, modify HS to generate structures required for interactions between HS and a variety of proteins. These interactions are implicated in proliferation and differentiation, adhesion, migration, inflammation, blood coagulation, and other diverse processes (Habuchi et al., 2000 [PubMed 10644753]).[supplied by OMIM, Mar 2008]

Product images:



Circular map for RC221187



Western blot validation of overexpression lysate (Cat# [LY407039]) using anti-DDK antibody (Cat# [TA50011-100]). Left: Cell lysates from untransfected HEK293T cells; Right: Cell lysates from HEK293T cells transfected with RC221187 using transfection reagent MegaTran 2.0 (Cat# [TT210002]).