

Product datasheet for **RC221177**

NICE2 (S100A7A) (NM_176823) Human Tagged ORF Clone

Product data:

Product Type: Expression Plasmids
Product Name: NICE2 (S100A7A) (NM_176823) Human Tagged ORF Clone
Tag: Myc-DDK
Symbol: NICE2
Synonyms: NICE-2; NICE2; S100A7f; S100A7L1; S100A15
Mammalian Cell Selection: Neomycin
Vector: pCMV6-Entry (PS100001)
E. coli Selection: Kanamycin (25 ug/mL)
ORF Nucleotide Sequence: >RC221177 representing NM_176823
Red=Cloning site **Blue**=ORF **Green**=Tags(s)

TTTTGTAATACGACTCACTATAGGGCGCCGGGAATTCGTCGACTGGATCCGGTACCGAGGAGATCTGCC
GCC**CGATCGCC**

ATGAGCAACTCAAGCTGAGAGGTCCATAATAGGCATGATCGACATGTTTCACAAATACACCGGACGTG
ATGGCAAGATTGAGAAGCCAAGCCTGCTGACGATGATGAAGGAGAAGCTCCCAATTTCTCAGTGCCTG
TGACAAAAGGGCATAATTACCTCGCCACTGTCTTTGAGAAAAAGGACAAGAATGAGGATAAGAAGATT
GATTTTTCTGAGTTTCTGCTCTTGTCTGGGAGACATAGCCGCAGACTACCACAAGCAGAGCCATGGAGCGG
CGCCCTGTCTGGGGAAGCCAG

ACGCGTACGCGGCCGCTCGAGCAGAAACTCATCTCAGAAGAGGATCTGGCAGCAAATGATATCCTGGATT
ACAAGGATGACGACGATAAGGTTTAA

Protein Sequence: >RC221177 representing NM_176823
Red=Cloning site **Green**=Tags(s)

MSNTQAERSIIGMIDMFHKYTGRDGKIEKPSLLTMMKENFPNFLSACDKKGIHYLATVFEKKDKNEDKKI
DFSEFLSLLGDIAADYHKQSHGAAPCSGGSQ

TRTRPLEQKLISEEDLAANDILDYKDDDDKV

Chromatograms: https://cdn.origene.com/chromatograms/mk8043_d02.zip

Restriction Sites: SgfI-MluI



[View online »](#)

Cloning Scheme:


ACCN: NM_176823

ORF Size: 303 bp

OTI Disclaimer: The molecular sequence of this clone aligns with the gene accession number as a point of reference only. However, individual transcript sequences of the same gene can differ through naturally occurring variations (e.g. polymorphisms), each with its own valid existence. This clone is substantially in agreement with the reference, but a complete review of all prevailing variants is recommended prior to use. [More info](#)

OTI Annotation: This clone was engineered to express the complete ORF with an expression tag. Expression varies depending on the nature of the gene.

Components: The ORF clone is ion-exchange column purified and shipped in a 2D barcoded Matrix tube containing 10ug of transfection-ready, dried plasmid DNA (reconstitute with 100 ul of water).

- Reconstitution Method:**
1. Centrifuge at 5,000xg for 5min.
 2. Carefully open the tube and add 100ul of sterile water to dissolve the DNA.
 3. Close the tube and incubate for 10 minutes at room temperature.
 4. Briefly vortex the tube and then do a quick spin (less than 5000xg) to concentrate the liquid at the bottom.
 5. Store the suspended plasmid at -20°C. The DNA is stable for at least one year from date of shipping when stored at -20°C.

RefSeq: [NM_176823.4](#)

RefSeq Size: 4351 bp

RefSeq ORF: 306 bp

Locus ID: 338324

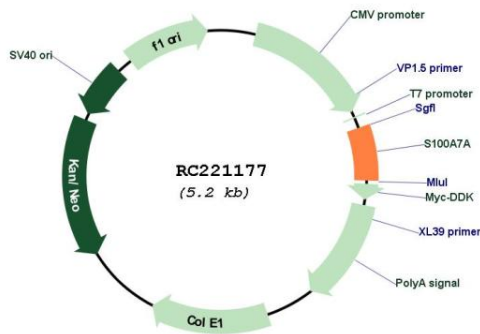
UniProt ID: [Q86SG5](#)

Cytogenetics: 1q21.3

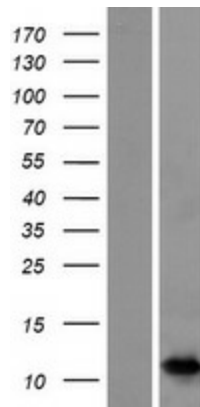
MW: 11.1 kDa

Gene Summary: May be involved in epidermal differentiation and inflammation and might therefore be important for the pathogenesis of psoriasis and other diseases.[UniProtKB/Swiss-Prot Function]

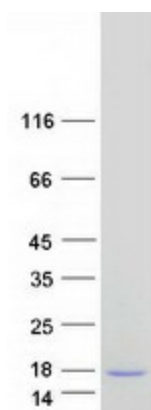
Product images:



Circular map for RC221177



Western blot validation of overexpression lysate (Cat# [LY406111]) using anti-DDK antibody (Cat# [TA50011-100]). Left: Cell lysates from untransfected HEK293T cells; Right: Cell lysates from HEK293T cells transfected with RC221177 using transfection reagent MegaTran 2.0 (Cat# [TT210002]).



Coomassie blue staining of purified S100A7A protein (Cat# [TP321177]). The protein was produced from HEK293T cells transfected with S100A7A cDNA clone (Cat# RC221177) using MegaTran 2.0 (Cat# [TT210002]).