

## Product datasheet for **RC221173**

### **GPRC5C (NM\_018653) Human Tagged ORF Clone**

#### **Product data:**

Product Type:	Expression Plasmids
Product Name:	GPRC5C (NM_018653) Human Tagged ORF Clone
Tag:	Myc-DDK
Symbol:	GPRC5C
Synonyms:	RAIG-3; RAIG3
Mammalian Cell Selection:	Neomycin
Vector:	pCMV6-Entry (PS100001)
E. coli Selection:	Kanamycin (25 ug/mL)



[View online »](#)

**ORF Nucleotide Sequence:**

>RC221173 representing NM\_018653  
 Red=Cloning site Blue=ORF Green=Tags(s)

TTTTGTAATACGACTCACTATAGGGCGGCCGGGAATTCGTCGACTGGATCCGGTACCGAGGAGATCTGCC  
 GCC**GCGATCGCC**

ATGGGGACCCAACCAGAGCCTGGCCTGGGAGCCAGGATGGCCATCCACAAAGCCTTGGTGTGTGCCTGG  
 GACTGCCTCTCTTCTGTCCAGGGCCCTGGGCCAGGGCCATGTCCACCCGGCTGCAGCCAAGCCCT  
 CAACCCCTGTACTACAACCTGTGTGACCGCTCTGGGGCTGGGGCATCGTCCTGGAGGCCGTGGCTGGG  
 GCGGGCATTGTCACCACGTTTGTGCTCACCATCATCTGGTGGCCAGCCTCCCCTTTGTGCAGGACCA  
 AGAAACGGAGCCTGCTGGGGACCCAGGTATTCTTCTTCTGGGGACCCTGGGCCTCTTCTGCCTCGTGT  
 TGCCTGTGTGGTGAAGCCCGACTTCTCCACCTGTGCCTCTCGGCGCTTCTCTTTGGGGTCTGTTCGCC  
 ATCTGCTTCTTGTCTGGCGGCTCACGCTTTGCCCTCAACTTCTGGCCCGGAAGAACCACGGGCCCC  
 GGGGCTGGGTGATCTTCACTGTGGCTCTGCTGCTGACCCTGGTAGAGGTATCATCAATACAGAGTGGCT  
 GATCATACCCTGGTTCGGGGCAGTGGCGAGGGCGGCCCTCAGGGCAACAGCAGCGCAGGCTGGGCCGTG  
 GCCTCCCCTGTGCCATCGCAACATGGACTTTGTTCATGGCACTCATCTACGTATGCTGCTGCTGCTGG  
 GTGCCTTCTGGGGCCCTGGCCCGCCCTGTGTGGCCGCTACAAGCGCTGGCGTAAGCATGGGGTCTTTGT  
 GCTCCTCACACAGCCACCTCCGTTGCCATATGGGTGGTGTGGATCGTATGTAATACTACGGCAACAAG  
 CAGCACAACAGTCCCACCTGGGATGACCCACGCTGGCCATCGCCCTCGCCGCAATGCCTGGGCCCTTCG  
 TCCTCTTCTACGTATCCCCGAGGTCTCCAGGTGACCAAGTCCAGCCCAGAGCAAAGCTACCAGGGGGA  
 CATGTACCCACCCGGGGCGTGGGCTATGAGACCATCTGAAAGAGCAGAAGGGTACAGAGCATGTTCTGTG  
 GAGAACAAGGCCTTTTCCATGGATGAGCCGTTGACGTAAGAGGCCGGTGTACCATACAGCGGGTACA  
 ATGGGCAGCTGCTGACCAGTGTGTACCAGCCACTGAGATGGCCCTGATGCACAAAGTCCGTCGGAAGG  
 AGCTTACGACATCATCTCCACGGGCCACCGCAACAGCCAGGTGATGGGCAGTGCCAACCTCGACCCTG  
 CGGGCTGAAGACATGTAATCGGCCAGAGCCACCAGGCGGCCACACCGCCGAAAGACGGCAAGAACTCTC  
 AGGTCTTTAGAAACCCTACGTGTGGAC

**ACGCGT**ACGCGGCCGCTCGAGCAGAACTCATCTCAGAAGAGGATCTGGCAGCAAATGATATCCTGGATT  
 ACAAGGATGACGACGATAAGGTTTAA

**Protein Sequence:**

>RC221173 representing NM\_018653  
 Red=Cloning site Green=Tags(s)

MGTQPEPGLGARMIAHKALVMCLGLPLFLFPGAWAQGHVPPGCSQGLNPLYYNLCDRSGAWGIVLEAVAG  
 AGIVTTFVLTIIILVASLFPVQDTKKRSLGLTQVFFLLGLFCLVFACVVKPDFSTCASRRFLFGVLF  
 ICFSCLAHVAFALNFLARKNHGPRGWVIFVALLLTLVEVIINTEWLIITLVRGSGEGGPQGNSSAGWAV  
 ASPCAIANMDFVMALIYVMLLLGAFLGAWPALCGRYKRWKRGVFLVLLTTATSVAIWVWVIMVMTYGNK  
 QHNSPTWDDPTLAIALAANAWAFVLFYVIPEVSQVTKSSPEQSYQGDMPTRGVGYETILKEQKQSMFV  
 ENKAFSMDEPVAAKRPVSPYSYNGQLLTSVYQPTMALMHKVPSEGAYDIILPRATANSQVMGSANSTL  
 RAEDMYSAQSHQAATPPKDGKNSQVFRNPYVWD

**TR**TRPLEQKLISEEDLAANDILDYKDDDDKV

**Chromatograms:**

[https://cdn.origene.com/chromatograms/mg3435\\_f08.zip](https://cdn.origene.com/chromatograms/mg3435_f08.zip)

**Restriction Sites:**

Sgfl-Mlul

**Cloning Scheme:**



**ACCN:** NM\_018653

**ORF Size:** 1359 bp

**OTI Disclaimer:** Due to the inherent nature of this plasmid, standard methods to replicate additional amounts of DNA in E. coli are highly likely to result in mutations and/or rearrangements. Therefore, OriGene does not guarantee the capability to replicate this plasmid DNA. Additional amounts of DNA can be purchased from OriGene with batch-specific, full-sequence verification at a reduced cost. Please contact our customer care team at [custsupport@origene.com](mailto:custsupport@origene.com) or by calling 301.340.3188 option 3 for pricing and delivery.

The molecular sequence of this clone aligns with the gene accession number as a point of reference only. However, individual transcript sequences of the same gene can differ through naturally occurring variations (e.g. polymorphisms), each with its own valid existence. This clone is substantially in agreement with the reference, but a complete review of all prevailing variants is recommended prior to use. [More info](#)

**OTI Annotation:** This clone was engineered to express the complete ORF with an expression tag. Expression varies depending on the nature of the gene.

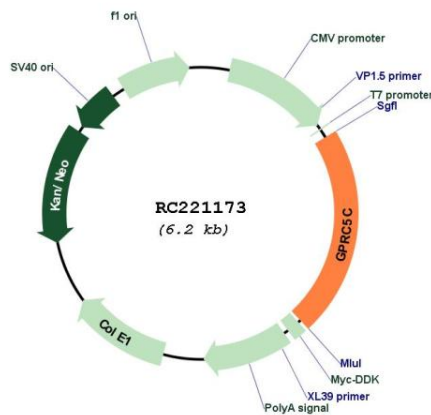
**Components:** The ORF clone is ion-exchange column purified and shipped in a 2D barcoded Matrix tube containing 10ug of transfection-ready, dried plasmid DNA (reconstitute with 100 ul of water).

- Reconstitution Method:**
1. Centrifuge at 5,000xg for 5min.
  2. Carefully open the tube and add 100ul of sterile water to dissolve the DNA.
  3. Close the tube and incubate for 10 minutes at room temperature.
  4. Briefly vortex the tube and then do a quick spin (less than 5000xg) to concentrate the liquid at the bottom.
  5. Store the suspended plasmid at -20°C. The DNA is stable for at least one year from date of shipping when stored at -20°C.

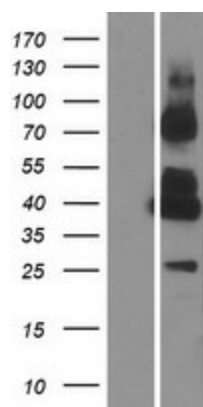
**RefSeq:** [NM\\_018653.3, NP\\_061123.3](#)  
**RefSeq Size:** 1836 bp  
**RefSeq ORF:** 1326 bp  
**Locus ID:** 55890  
**UniProt ID:** [Q9NQ84](#)  
**Cytogenetics:** 17q25.1  
**Protein Families:** Druggable Genome, GPCR, Transmembrane  
**MW:** 49.2 kDa  
**Gene Summary:**

The protein encoded by this gene is a member of the type 3 G protein-coupled receptor family. Members of this superfamily are characterized by a signature 7-transmembrane domain motif. The specific function of this protein is unknown; however, this protein may mediate the cellular effects of retinoic acid on the G protein signal transduction cascade. Two transcript variants encoding different isoforms have been found for this gene. [provided by RefSeq, Jul 2008]

**Product images:**



Circular map for RC221173



Western blot validation of overexpression lysate (Cat# [LY412960]) using anti-DDK antibody (Cat# [TA50011-100]). Left: Cell lysates from untransfected HEK293T cells; Right: Cell lysates from HEK293T cells transfected with RC221173 using transfection reagent MegaTran 2.0 (Cat# [TT210002]).