

## Product datasheet for RC221172

### ASPP1 (PPP1R13B) (NM\_015316) Human Tagged ORF Clone

#### Product data:

Product Type:	Expression Plasmids
Product Name:	ASPP1 (PPP1R13B) (NM_015316) Human Tagged ORF Clone
Tag:	Myc-DDK
Symbol:	ASPP1
Synonyms:	ASPP1; p53BP2-like; p85
Mammalian Cell Selection:	Neomycin
Vector:	pCMV6-Entry (PS100001)
E. coli Selection:	Kanamycin (25 ug/mL)
ORF Nucleotide Sequence:	>RC221172 representing NM_015316 Red=Cloning site Blue=ORF Green=Tags(s)

TTTTGTAATACGACTCACTATAGGGCGGCCGGAATTCGTCGACTGGATCCGGTACCGAGGAGATCTGCC  
GCC**CGATCGCC**

ATGATGCCGATGATATTAACGTGTTTTCTTGAGCAACAATGAACAGATTTAACAGAAGTTCCTATAACAC  
CGGAAACAACCTGTCGAGATGTTGTAGAATTTGCAAGGAACCTGGAGAAGGCAGCTGCCATTTAGCTGA  
AGTGTGGAGGGGAAATGAACGTCCCATACCCTTTGATCATATGATGTACGAACATCTTCAGAAATGGGGT  
CCACGGAGGGAAGAAGTAAAATTTTCTTCGACACGAGGACTCCCCAACTGAGAACAGTGAACAAGGTG  
GCCGTGACACCAAGAGCAACGAACTCAGAGAAATGTAATAAATGTACCTGGAGAAAAACGTAAGAAAA  
TGGGGTTGGGAATCCACGTGTTGAACTTACCCTCTCAGAGCTCCAAGATATGGCAGCTAGGCAACAGCAG  
CAGATTGAAAATCAGCAGCAGATGTTGGTTGCCAAGGAACAGCGTTTACATTTTCTAAAGCAACAGGAGC  
GCCGTGACGAGCAGTCTATTTCTGAAAATGAAAAGCTTCAGAAAATGAAAAGAACGAGTTGAAGCCCAGGA  
GAACAAGCTGAAGAAAATTCGTGCAATGAGAGGACAAGTCGACTACAGCAAAATCATGAACGGCAATCTG  
TCTGCTGAAAATAGAAAGGTTCAAGTGCATGTTCCAGGAAAAGAAGCAGGAAGTACAGACTGCAATTTTAA  
GGGTTGATCAGCTTAGTCAGCAATTGGAAGATTTAAAGAAAGGAAAACGTAATGGGTTCCAGTCTTACAA  
TGGCAAATGACGGGACCAGCGGGTGGAGTTAAAAGAACTGTACCAAGAACTACAGATTCGTAACCAA  
CTTAACCAGGAACAAAATCAAACTTCAGCAGCAGAAGGAACCTTAAATAAGCGCAACATGGAGGTGG  
CCATGATGGACAAGCGAATCAGTGAACGCGTGAACGCTCTATGGGAAAAAAATTCAGCTGAACCGTGT  
GAATGGCAGTCAACACCACAGTCCCCTCTGAGCACATCGGGCAGGGTCTGCTGCTGGGCCTTATATC  
CAGGTTCCAGTGCCGGAAGCTTCTGTGCTGGGGACCCTATAAAGCCCCAGTCTCTCAGTATTGCCCT  
CAAATGCTGCTCATGGAAGATCCAAATCCGCTAATGATGGAACTGGCCAACATTAACAGAAATCTAG  
CTCTCCGTGAAACAGTGCAGGTGGCCGGTGCAGACTGGAAGGATCCGAGCGTGGAGGGTCTGTCAAG  
CAGGGCACTGTCTCCAGCCAGCCTGTGCCCTTCTCAGCACTGGGACCCACGGAGAAGCCGGGCATCGAGA  
TTGGTAAAGTGCCACCTCCATCCCGGGTGTAGGCAAGCAGCTGCCTCCAAGCTATGGGACATACCAAG  
TCCTACACCTCTGGGTCCTGGTGCACAAGCTCCCTGAAAGGAGGAAGGAGGCAGCTTGCCAGGCC



[View online »](#)

AGTGCAGGCTGCCAAGTCGACAGAGGCCACCCTGCTGCCCGCCACAGGCAGCACCCCCAGCCAGGCT  
 CCTCACAACAGATTACAGCAGAGGATTTCCGTACCGCAAGTCCCACGTACCCGCCAGCGGGACCCTGC  
 ATTTCCAGCTGGGGACAGCAAGCCTGAACTCCCCTGACAGTGGCCATTAGGCCTTTCTGGCTGATAAA  
 GGGTCAAGGCCACAGTCTCCAGAAAGGACCCAGACAGTGAATTCAAGTTCCATATACTCCATGTACC  
 TCCAGCAAGCCACACCACCTAAGAATTACCAGCCGGCAGCACACAGCGCCTTAAATAAGTCAGTTAAAGC  
 AGTGTATGGTAAGCCCGTTTTACCTTCGGGTCAACCTCTCCATCGCCGCTGCCGTTTCTCACGGGTCA  
 CTGTCCACGGGCACACCACAGCCTCAGCCACCTCAGAAAGTACTGAGAAAGAGCCTGACAGGATGGCC  
 CGGCCGCCCGCAGATGGCAGCACCGTGGAGAGCCTGCCACGGCCACTAGCCCCACCAAGCTCACGCC  
 CATCGTGCATTGCCACTGCGCTACCAGAGTGATGCAGACCTGGAGGCCCTCCGAGGAAGCTGGCCAAC  
 GCGCCCCGGCCCCGAAAAAGCGCAGCTCCATCACAGAGCCCAGGGCCCCGGCGGGCCCAACATCCAGA  
 AGCTGCTGTACCAGCGCTTAACACCCTGGCCGGTGGCATGGAGGGCACCCCTTTCTACCAGCCCAGCCC  
 CTCCAGGACTTCATGGGCACCTTGCCGATGTGGACAATGAAACACCAATGCCAATGAAACCTGGAA  
 GAGTCCCCCTGCCAGCCACAGCCCCTCCCGCTGAGCCTGCCCGTTCATCAGATGCCAATGATA  
 ATGAGTTACCTTCCCCGAACCAGAGGAGCTCATCTGTCCCAAACCACCCACCAAACTGCCGAGCCGGC  
 AGAGGACAATAACAACAACGTGGCCACGGTCCCACCACGAGCAGATCCCGAGTCTGTGGCTGAGGCC  
 CCATCTCCAGGGGAAGAGCAGGTCCTCCAGCACCTTCCCCCTGCCAGCCACCCTCCTGCCACCTCCA  
 CGAAACAAGCGGCAACTTGAAGAAGCCAACTCGGAGCGGACGGGGCACGGGCTGAGAGTCCGGTTTAA  
 CCCCTGGCACTGCTCCTAGACGCTCTCTGGAAGGAGAGTTCGATCTGGTGCAGAGGATCATCTATGAG  
 GTGGAAGATCCCAGCAAGCCCAACGACGAAGGGATCACCCACTGCACAACGCCGTCTGCCCGGCCACC  
 ATCACATCGTGAAGTTCCTGCTGGATTTTGGTGTCAACGTGAATGCTGCTGATAGTATGGATGGACGCC  
 GCTGCACTGCGCTGCCTTTGTAACAGCGTTCACTCTGCAAACAGCTGGTGGAGAGTGGTGCCGCATT  
 TTTGCCTAACCATAAAGCGACATTGAAACTGCTGCAGACAAGTGTGAGGAGATGGAGGAAGGCTACATCC  
 AGTGTCTCCAGTTTCTATATGGGGTGCAGGAAAAGCTGGGTGTGATGAACAAAGGTGTGGCGTATGCTCT  
 GTGGGACTACGAGGCCAGAACAGTGCAGAGTGTCTTCCACGAAGGGGACGCCCTCACCATCTGAGG  
 CGCAAGGACGAAAGCGAGACTGAGTGGTGGTGGGCTCGCCTTGGAGACGGGAGGGCTATGTGCCAAAA  
 ACCTGCTGGGCTGTATCCACGGATCAAACCCGACAGCGAACACTCGCC

AGCGGACCGACGCGTACGCGGCCGCTCGAGCAGAAACTCATCTCAGAAGAGGATCTGGCAGCAAATGATATCC  
 TGGATTACAAGGATGACGACGATAAGGTTTAA

**Protein Sequence:**

>RC221172 representing NM\_015316  
 Red=Cloning site Green=Tags(s)

MMPMILTVFLSNNEQILTEVPITPETTCRDVVEFCKEPGECSCHLAEVWRGNERPIPFDHMMYELKQKWG  
 PRREEVKFFLRHEDSPTENSEQGGRTQEQRTRQNVINVPGEKRTENGVGNPRVELTLSELQDMAARQQQ  
 QIENQQQMLVAKEQRLHFLKQERRQQQSISENEKLQKLKERVEAQENLKKIRAMRGQVDYSKIMNGNL  
 SAEIERFSAMFQEKQEVQTAILRVDQLSQQLEDLKKGLNGFQSYNGKLTGPAAVELKRLYQELQIRNQ  
 LNQEQNSKLQQKELLNKRNMVAMMDKRISELRERLYGKKIQLNRVNGTSSPQSPLSTSGRVAAVGPYI  
 QVPSAGSFPVLDPIKQSLSIASNAAHGRSKSANDGNWPTLKQNSSSVKPVQVAGADWKDPSVEGSVK  
 QGTVSSQVPVFSALGPTEKPGIEIGKVPPPPIPGVGKQLPPSYGYPSPTPLGPGSTSSLERRKEGSLPRP  
 SAGLPSRQRPTLLPATGSTPQPGSSQIQQRISVPPSPTYPAGPPAFAPAGDSKPELPLTVAIRPFLADK  
 GSRPQSPRKGPTVNSSIYSMYLQQAATPPKNYQPAHSAALNKSVAVYKPVLPSTSPSPLPFLHGS  
 LSTGTPQPQPPSESTEKEPEQDGAAPADGSTVESLPRPLSPTKLTPIVHSPRLYQSDADLEALRRKLAN  
 APRPLKKRSSITEPEGGPNIQKLLYQRFNTLAGGMEGTPFYQSPSQDFMGLTADVDNGNTNANGNLE  
 ELPPAQPTAPLPAEPAPSSDANDNELPSPEPEELICPQTHQTAEPADNNNNVATVPTTEQIPSPVAEA  
 PSPGEEQVPPAPLPPASHPPATSTNKRTNLKPNINSERTGHGLRVRFNPLALLLDASLEGEFDLVQRIYE  
 VEDPSKPNDEGITPLHNAVCAHHHIVKFLDFGVNVNAADSDGWTPLHCAASCNSVHLCKQLVESGAAI  
 FASTISDIETAADKCEEMEEGYIQCSQFLYGVQEKLGMNKGVAYALWDYEAQNSDEL SFHEGDALITLR  
 RKDESETEWWWARLGDREGYVPKNLLGLYPRIKPRQRTLA

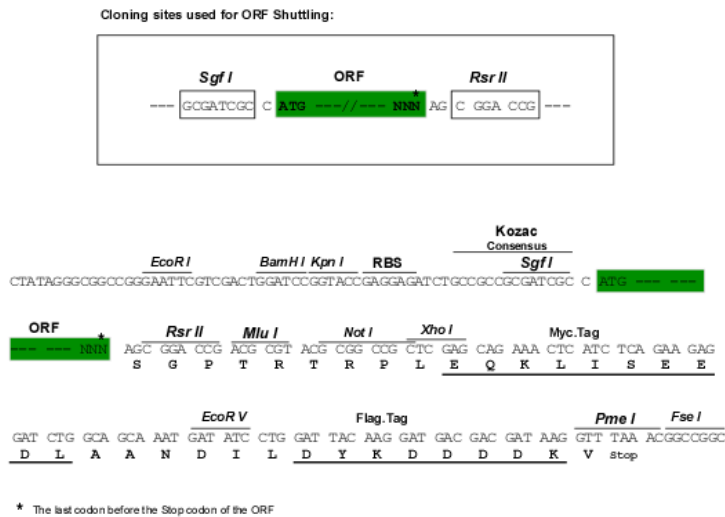
SGPTRRRLQKLI SEEDLAANDILDYKDDDDKV

**Chromatograms:**

[https://cdn.origene.com/chromatograms/mk8043\\_d03.zip](https://cdn.origene.com/chromatograms/mk8043_d03.zip)

Restriction Sites: SgfI-RsrII

Cloning Scheme:



ACCN: NM\_015316

ORF Size: 3270 bp

OTI Disclaimer: The molecular sequence of this clone aligns with the gene accession number as a point of reference only. However, individual transcript sequences of the same gene can differ through naturally occurring variations (e.g. polymorphisms), each with its own valid existence. This clone is substantially in agreement with the reference, but a complete review of all prevailing variants is recommended prior to use. [More info](#)

OTI Annotation: This clone was engineered to express the complete ORF with an expression tag. Expression varies depending on the nature of the gene.

Components: The ORF clone is ion-exchange column purified and shipped in a 2D barcoded Matrix tube containing 10ug of transfection-ready, dried plasmid DNA (reconstitute with 100 ul of water).

Reconstitution Method:

1. Centrifuge at 5,000xg for 5min.
2. Carefully open the tube and add 100ul of sterile water to dissolve the DNA.
3. Close the tube and incubate for 10 minutes at room temperature.
4. Briefly vortex the tube and then do a quick spin (less than 5000xg) to concentrate the liquid at the bottom.
5. Store the suspended plasmid at -20°C. The DNA is stable for at least one year from date of shipping when stored at -20°C.

RefSeq: [NM\\_015316.3](#)

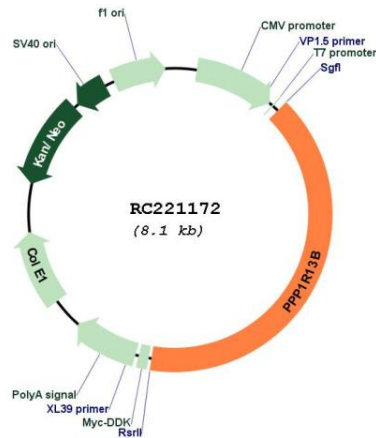
RefSeq Size: 4834 bp

RefSeq ORF: 3273 bp

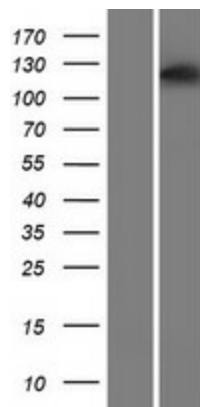
Locus ID: 23368

**UniProt ID:** [Q96KQ4](#)  
**Cytogenetics:** 14q32.33  
**Domains:** SH3, ANK  
**Protein Families:** Druggable Genome  
**MW:** 119.4 kDa  
**Gene Summary:** This gene encodes a member of the ASPP (apoptosis-stimulating protein of p53) family of p53 interacting proteins. The protein contains four ankyrin repeats and an SH3 domain involved in protein-protein interactions. ASPP proteins are required for the induction of apoptosis by p53-family proteins. They promote DNA binding and transactivation of p53-family proteins on the promoters of proapoptotic genes. Expression of this gene is regulated by the E2F transcription factor. [provided by RefSeq, Jul 2008]

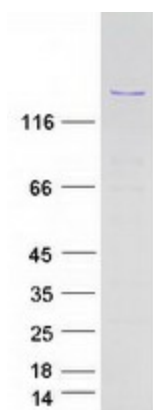
### Product images:



Circular map for RC221172



Western blot validation of overexpression lysate (Cat# [LY414647]) using anti-DDK antibody (Cat# [TA50011-100]). Left: Cell lysates from untransfected HEK293T cells; Right: Cell lysates from HEK293T cells transfected with RC221172 using transfection reagent MegaTran 2.0 (Cat# [TT210002]).



Coomassie blue staining of purified PPP1R13B protein (Cat# [TP321172]). The protein was produced from HEK293T cells transfected with PPP1R13B cDNA clone (Cat# RC221172) using MegaTran 2.0 (Cat# [TT210002]).