

Product datasheet for **RC221171**

CDC14B (NM_001077181) Human Tagged ORF Clone

Product data:

Product Type:	Expression Plasmids
Product Name:	CDC14B (NM_001077181) Human Tagged ORF Clone
Tag:	Myc-DDK
Symbol:	CDC14B
Synonyms:	Cdc14B1; Cdc14B2; CDC14B3; hCDC14B
Mammalian Cell Selection:	Neomycin
Vector:	pCMV6-Entry (PS100001)
E. coli Selection:	Kanamycin (25 ug/mL)



[View online »](#)

ORF Nucleotide Sequence:

>RC221171 representing NM_001077181
 Red=Cloning site Blue=ORF Green=Tags(s)

TTTTGTAATACGACTCACTATAGGGCGGCCGGAATTCGTCGACTGGATCCGGTACCGAGGAGATCTGCC
 GCC**CGCATCGCC**

ATGAGCCGGGAGGGCGCGGGGCGAGCTTTGGTAGCCGAGGTGATCAAAGATCGCCTTTGTTTGGCCATTC
 TCTACAGCAGACCAAAGAGTGCATCAAATGTACATTATTTTCAGCATAGATAATGAACTTGAATATGAGAA
 CTTCTACGCAGATTTTGGACCACTCAATCTGGCAATGGTTTACAGATATTGTTGCAAGATCAATAAGAAA
 TTAAGTCCATTACAATGTTAAGGAAGAAAATTGTTCAATTTACTGGCTCTGATCAGAGAAAAACAAGCAA
 ATGCTGCCTTCTTGGTGGATGCTACATGGTTATATATTTGGGAGAACCCAGAGAAGCATATAGAAT
 ATTAATCTTTGGAGAGACATCCTATATTCCTTTCAGAGATGCTGCCTATGGAAGTTGCAATTTCTACATT
 ACACTTCTTGACTGTTTTATGCAGTAAAGAAGGCAATGCAGTATGGCTTCTTAATTTCAACTCATTTA
 ACCTTGATGAATATGAACACTATGAAAAAGCAGAAAATGGAGATTTAAATGGATAATACCAGACCGATT
 TATTGCCTTCTGTGGACCTCATTCAAGAGCCAGACTTGAAGTGGTTACCACCAACATTCTCCTGAGACT
 TATATTCATATTTAAGAATCACAAATGTTACTACCATTATTCGTCCTGAATAAAAGGATGTATGATGCCA
 AACGCTTTACGGATGCTGGCTTCGATCACCATGATCTTTTCTTTCGCGGATGGCAGCACCCCTACTGATGC
 CATTGTCAAAGAATTCCTAGATATCTGTGAAAATGCTGAGGGTGCCATTGCAGTACATTGCAAAGCTGGC
 CTTGGTCGCACGGGCACTCTGATAGCCTGCTACATCATGAAGCATTACAGGATGACAGCAGCCGAGACCA
 TTGCGTGGGTGAGGATCTGCAGACCTGGCTCGGTGATTGGGCCTCAGCAGCAGTTTTTGGTGATGAAGCA
 AACCAACTCTGGCTGGAAGGGGACTATTTTCGTGAGAAGTTAAAGGGCAGGAGAATGGACAACACAGA
 GCAGCCTTCTCCAACCTCTCTCTGGCCTGATGACATTTCCATAAATGGGTGAGAGATCAAGATCAGC
 AAGAACCAGAACCGTACAGTATGATGACGAAATCAATGGAGTACACAAAGGTGATAGACTTCGGGCCTT
 GAAAAGCAGAAGACAATCCAAAACAACGCTATTCCTCTCACAGTAATTCTTCAATCCAGTGTTCAGAGC
 TGTA AACATCTGAACCTAACATTTCTGGCAGTGCAGGCATTACTAAAAGAACCACCAGATCTGCTTCAA
 GAAAAGCAGTGTAAAAGTCTCTCCATTTCAAGGACTAAAACAGTCTTGCCT

ACGCGTACGCGGCCGCTCGAGCAGAACTCATCTCAGAAGAGGATCTGGCAGCAAATGATATCCTGGATT
 ACAAGGATGACGACGATAAGGTTTAA

Protein Sequence:

>RC221171 representing NM_001077181
 Red=Cloning site Green=Tags(s)

MSREGAGAALVAEVIKDRLCFAILYSRPKSASNVHYFSIDNELEYENFYADFGPLNLAMVYRYCCKINKK
 LKSITMLRKKIVHFTGSDQRKQANAFLVGCYMIYLRTRPEEAYRILIFGETSYIPFRDAAAYGSCNFYI
 TLLDCFHAVKKAMQYGF LNFNSFNLDEYEHYKAENGLNWIIPDRFIAFCGPHSRARLESYHQHSPET
 YIQYFKNHNVTTIIRLNKRMYPDARFTDAGFDHDLFFADGSTPTDAIVKEFLDICENAEGAIIVHCKAG
 LGRTGTLIACYIMKHRYMTAAETIAWVRICRPGSVIGPQQFLVMKQTNLWLEGDYFRQKLGQENQHR
 AAFSKLLSGVDDISINGVENQDQEQPEPYSDDDEINGVTQGDRLRALKSRRQSKTNAIPLTVILQSSVQS
 CKTSEPNISSGAGITKRTRRSASRKSSVKSLSISRTKTVLR

TRTRPLEQKLISEEDLAANDILDYKDDDDKV

Chromatograms:

https://cdn.origene.com/chromatograms/mk8005_d03.zip

Restriction Sites:

Sgfl-Mlul

Cloning Scheme:



ACCN: NM_001077181

ORF Size: 1383 bp

OTI Disclaimer: The molecular sequence of this clone aligns with the gene accession number as a point of reference only. However, individual transcript sequences of the same gene can differ through naturally occurring variations (e.g. polymorphisms), each with its own valid existence. This clone is substantially in agreement with the reference, but a complete review of all prevailing variants is recommended prior to use. [More info](#)

OTI Annotation: This clone was engineered to express the complete ORF with an expression tag. Expression varies depending on the nature of the gene.

Components: The ORF clone is ion-exchange column purified and shipped in a 2D barcoded Matrix tube containing 10ug of transfection-ready, dried plasmid DNA (reconstitute with 100 ul of water).

Reconstitution Method:

1. Centrifuge at 5,000xg for 5min.
2. Carefully open the tube and add 100ul of sterile water to dissolve the DNA.
3. Close the tube and incubate for 10 minutes at room temperature.
4. Briefly vortex the tube and then do a quick spin (less than 5000xg) to concentrate the liquid at the bottom.
5. Store the suspended plasmid at -20°C. The DNA is stable for at least one year from date of shipping when stored at -20°C.

RefSeq: [NM_001077181.3](#)

RefSeq Size: 5131 bp

RefSeq ORF: 1386 bp

Locus ID: 8555

UniProt ID: [O60729](#)

Cytogenetics: 9q22.32-q22.33

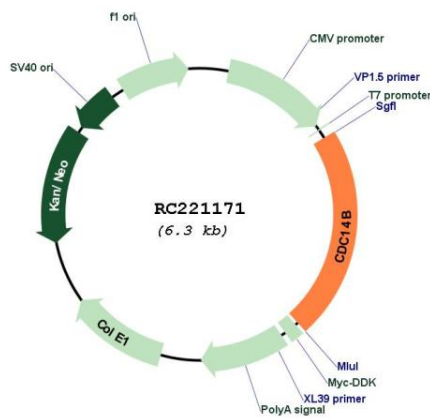
Protein Families: Druggable Genome, Phosphatase

Protein Pathways: Cell cycle

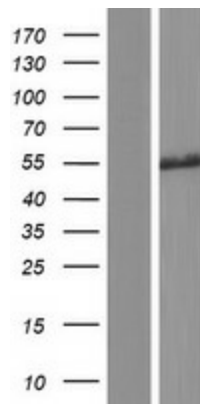
MW: 52.1 kDa

Gene Summary: The protein encoded by this gene is a member of the dual specificity protein tyrosine phosphatase family. This protein is highly similar to *Saccharomyces cerevisiae* Cdc14, a protein tyrosine phosphatase involved in the exit of cell mitosis and initiation of DNA replication, which suggests the role in cell cycle control. This protein has been shown to interact with and dephosphorylates tumor suppressor protein p53, and is thought to regulate the function of p53. Alternative splice of this gene results in 3 transcript variants encoding distinct isoforms. [provided by RefSeq, Jul 2008]

Product images:



Circular map for RC221171



Western blot validation of overexpression lysate (Cat# [LY421370]) using anti-DDK antibody (Cat# [TA50011-100]). Left: Cell lysates from untransfected HEK293T cells; Right: Cell lysates from HEK293T cells transfected with RC221171 using transfection reagent MegaTran 2.0 (Cat# [TT210002]).