

## Product datasheet for **RC221168**

### CHRNA1 (NM\_001039523) Human Tagged ORF Clone

#### Product data:

Product Type:	Expression Plasmids
Product Name:	CHRNA1 (NM_001039523) Human Tagged ORF Clone
Tag:	Myc-DDK
Symbol:	CHRNA1
Synonyms:	ACHRA; ACHRD; CHRNA; CMS1A; CMS1B; CMS2A; FCCMS; SCCMS
Mammalian Cell Selection:	Neomycin
Vector:	pCMV6-Entry (PS100001)
E. coli Selection:	Kanamycin (25 ug/mL)



[View online »](#)

**ORF Nucleotide Sequence:**

>RC221168 representing NM\_001039523  
 Red=Cloning site Blue=ORF Green=Tags(s)

TTTTGTAATACGACTCACTATAGGGCGGCCGGAATTCGTCGACTGGATCCGGTACCGAGGAGATCTGCC  
 GCC**GCGATCGCC**

ATGGAGCCCTGGCCTCTCCTCTGCTCTTAGCCTTTGCTCAGCTGGCCTCGTCCTGGGCTCCGAACATG  
 AGACCCGTCTGGTGGCAAAGCTATTTAAAGACTACAGCAGCGTGGTGCAGCCAGTGAAGACCACCGCCA  
 GGTCTGGAGGTACCGTGGCCTGCAGCTGATACAGCTCATCAATGTGGATGAAGTAAATCAGATCGTG  
 ACAACCAATGTGCGTCTGAAACAGGGTGACATGGTAGACTGCCACGCCAGCTGCGTGACTTTGGGAG  
 TTCCTTTGTTTTCTCATCTGCAGAAATGAGCAATGGGTGGATTACAACCTAAAATGGAATCCAGATGACTA  
 TGGCGGTGTGAAAAAATTCACATTCCTTCAGAAAAGATCTGGCGCCAGACCTTGTCTCTATAACAAAT  
 GCAGATGGTGACTTTGCTATTGTCAAGTTCACCAAAGTGTCTCTGCAGTACACTGGCCACATCACGTGGA  
 CACCTCCAGCCATCTTTAAAAGCTACTGTGAGATCATCGTCACCCACTTCCCTTTGATGAACAGAAGT  
 CAGCATGAAGCTGGGCACCTGGACCTACGACGGCTCTGTCGTGGCCATCAACCCGAAAGCGACCAGCCA  
 GACCTGAGCAACTTCATGGAGAGCGGGAGTGGGTGATCAAGGAGTCCCGGGGCTGGAAGCACTCCGTGA  
 CCTATTCTGCTGCCCGACACCCCTACCTGGACATCACCTACCACTTCGTCATGCAGCGCCTGCCCT  
 CTACTTCATCGTCAACGTCAATCCCCTGCTCTCTCTCTTCTTAACTGGCCTGGTATTCTACCTG  
 CCCACAGACTCAGGGGAGAAGATGACTCTGAGCATCTCTGTCTTACTGTCTTTGACTGTGTTCTCTG  
 TCATCGTGGAGCTGATCCCTCCACGTCCAGTGTGTGCCCTTGATTGAAAAATACATGCTGTTCCACAT  
 GGTGTTTCGTCATTGCCTCCATCATCACTGTGATCGTCATCAACACACACCACCGTCCACCCAGCACC  
 CATGTCATGCCAACTGGGTGCGGAAGGTTTTATCGACTATCCCAAATATCATGTTTTCTCCACAA  
 TGAAAAGACCATCCAGAGAAAAGCAAGCAAAAAGATTTTTACAGAAGACATTGATCTGACATTTCC  
 TGGAAAGCCAGGGCCTCCACCCATGGGCTTCCACTCTCCCTGATCAAACACCCGAGGTGAAAAGTGCC  
 ATCGAGGGCATCAAGTACATCGCAGAGACCATGAAGTCAGACCAGGAGTCTAACAATGCGCGGCAGAGT  
 GGAAGTACGTTGCAATGGTATGGACCACATACTCCTCGGAGTCTTCATGCTTGTTCATCATCGGAAC  
 CCTAGCCGTGTTGCAGGTGACTCATTGAATTAATCAGCAAGGA

**ACGCGT**ACGCGGCCGCTCGAGCAGAAACTCATCTCAGAAGAGGATCTGGCAGCAATGATATCCTGGATT  
 ACAAGGATGACGACGATAAGGTTTAA

**Protein Sequence:**

>RC221168 representing NM\_001039523  
 Red=Cloning site Green=Tags(s)

MEPWLLLLLFLCSAGLVLGSEHETRLVAKLFKDYSSVVRPVEDHRQVVEVTVGLQLIQLINVDEVNQIV  
 TTNVRLKQGDMDLPRPSCVTLGVPLFSLQNEQWVDYNLKWNPDYGGVKKIHIPSEKIWRPDLVLYNN  
 ADGDFAIVKFTKVLQYTGHITWPPAIFKSYCEIIVTHFPFDEQNCMKLGTWYDGSVVAINPESDQP  
 DLSNFMESGEWIKESRGWKHSVTYSCCPDTPYLDITYHFVMQRLPLYFIVNVIIPCLLFSFLTGLVFYL  
 PTDSGEKMTLSISVLLSLTVFLLVIVELIPSTSSAVPLIGKYMLFTMVFVIASIIITVIVINTHHRSPST  
 HVMPNWRKVFIDTIPNIMFFSTMKRPSREKQDKIFTEDIDISDISGKPGPPPMGFHSPLIKHPEVKS  
 AIEGIKYIAETMKSQESNNAAEWKYVAMVMDHILLGVFMLVCIIGTLAVFAGRLIELNQGG

**TR**TRPLEQKLISEEDLAANDILDYKDDDDKV

**Chromatograms:**

[https://cdn.origene.com/chromatograms/mk6506\\_f12.zip](https://cdn.origene.com/chromatograms/mk6506_f12.zip)

**Restriction Sites:**

Sgfl-MluI

**Cloning Scheme:**


**ACCN:** NM\_001039523

**ORF Size:** 1446 bp

**OTI Disclaimer:** The molecular sequence of this clone aligns with the gene accession number as a point of reference only. However, individual transcript sequences of the same gene can differ through naturally occurring variations (e.g. polymorphisms), each with its own valid existence. This clone is substantially in agreement with the reference, but a complete review of all prevailing variants is recommended prior to use. [More info](#)

**OTI Annotation:** This clone was engineered to express the complete ORF with an expression tag. Expression varies depending on the nature of the gene.

**Components:** The ORF clone is ion-exchange column purified and shipped in a 2D barcoded Matrix tube containing 10ug of transfection-ready, dried plasmid DNA (reconstitute with 100 ul of water).

**Reconstitution Method:**

1. Centrifuge at 5,000xg for 5min.
2. Carefully open the tube and add 100ul of sterile water to dissolve the DNA.
3. Close the tube and incubate for 10 minutes at room temperature.
4. Briefly vortex the tube and then do a quick spin (less than 5000xg) to concentrate the liquid at the bottom.
5. Store the suspended plasmid at -20°C. The DNA is stable for at least one year from date of shipping when stored at -20°C.

**RefSeq:** [NM\\_001039523.3](#)

**RefSeq Size:** 2040 bp

**RefSeq ORF:** 1449 bp

**Locus ID:** 1134

**UniProt ID:** [P02708](#)

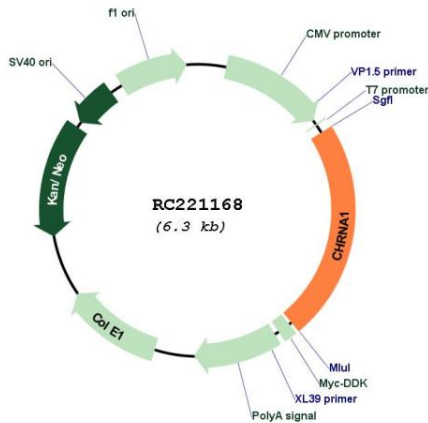
**Cytogenetics:** 2q31.1

**Protein Families:** Druggable Genome, Ion Channels: Cys-loop Receptors, Transmembrane

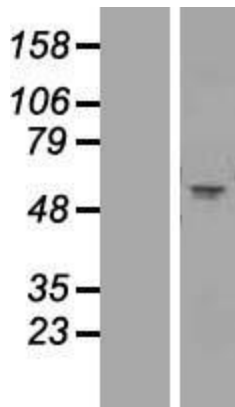
**MW:** 54.55 kDa

**Gene Summary:** The muscle acetylcholine receptor consists of 5 subunits of 4 different types: 2 alpha subunits and 1 each of the beta, gamma, and delta subunits. This gene encodes an alpha subunit that plays a role in acetylcholine binding/channel gating. Alternatively spliced transcript variants encoding different isoforms have been identified. [provided by RefSeq, Nov 2012]

**Product images:**



Circular map for RC221168



Western blot validation of overexpression lysate (Cat# [LY422065]) using anti-DDK antibody (Cat# [TA50011-100]). Left: Cell lysates from untransfected HEK293T cells; Right: Cell lysates from HEK293T cells transfected with RC221168 using transfection reagent MegaTran 2.0 (Cat# [TT210002]).