

Product datasheet for **RC221153**

CD62E (SELE) (NM_000450) Human Tagged ORF Clone

Product data:

Product Type:	Expression Plasmids
Product Name:	CD62E (SELE) (NM_000450) Human Tagged ORF Clone
Tag:	Myc-DDK
Symbol:	CD62E
Synonyms:	CD62E; ELAM; ELAM1; ESEL; LECAM2
Mammalian Cell Selection:	Neomycin
Vector:	pCMV6-Entry (PS100001)
E. coli Selection:	Kanamycin (25 ug/mL)



[View online »](#)

ORF Nucleotide Sequence:

>RC221153 representing NM_000450
 Red=Cloning site Blue=ORF Green=Tags(s)

TTTTGTAATACGACTCACTATAGGGCGGCCGGAATTCGTCGACTGGATCCGGTACCGAGGAGATCTGCC
 GCC**CGCATCGCC**

ATGATTGCTTCACAGTTTCTCTCAGCTCTCACTTTGGTGCTTCTCATTAAAGAGAGTGGAGCCTGGTCTT
 ACAACACCTCCACGGAAGCTATGACTTATGATGAGGCCAGTGCTTATTGTGAGCAAAAGGTACACACACCT
 GGTGCAATTCAAACAAGAAGAGATTGAGTACCTAACTCCATATTGAGCTATTCACCAAGTTATTAC
 TGGATTGGAATCAGAAAAGTCAACAATGTGTGGGTCTGGGTAGGAACCCAGAAACCTCTGACAGAAGAAG
 CCAAGAAGTGGGCTCCAGGTGAACCAACAATAGGCAAAAAGTGAAGGACTGCGTGGAGATCTACATCAA
 GAGAGAAAAGATGTGGGCATGTGAATGATGAGAGGTGCAGCAAGAAGAAGCTTGCCCTATGCTACACA
 GCTGCCTGTACCAATACATCCTGCAGTGGCCACGGTGAATGTGTAGAGACCATCAATAATTACACTTGCA
 AGTGTGACCCTGGCTTCAGTGGACTCAAGTGTGAGCAAATGTGAACTGTACAGCCCTGGAATCCCTGGA
 GCATGGAAGCCTGGTTTGCAGTCAACCTGGGAACTTCAGCTACAATCTTCTGCTCTATCAGCTGT
 GATAGGGTTACCTGCCAAGCAGCATGGAGACCATGCAGTGTATGCCTCTGGAGAATGGAGTGCCTTA
 TTCCAGCCTGCAATGTGGTTGAGTGTGATGCTGTGACAAATCCAGCCAATGGGTTCTGTTGGAATGTTTCCA
 AAACCTGGAAGCTTCCCATGGAACACAACCTGTACATTTGACTGTGAAGAAGGATTTGAACTAATGGGA
 GCCCAGAGCCTTCAGTGTACCTCATCTGGGAATTGGGACAACGAGAAGCCAACGTGTAAGCTGTGACAT
 GCAGGGCCGTCCGCCAGCCTCAGAAATGGCTCTGTGAGGTGCAGCCATCCCTGCTGGAGAGTTCACCTT
 CAAATCATCTGCAACTTCACCTGTGAGGAAGGCTTCAATGTTGCAGGGACCAGCCAGGTTGAATGCACC
 ACTCAAGGGCAGTGGACACAGCAAATCCAGTTTGTGAAGCTTCCAGTGCACAGCCTTGCCAACCCCG
 AGCGAGGCTACATGAATGTCTTCTAGTGTCTTGGCAGTTTCCGTTATGGGTCCAGCTGTGATTCTC
 CTGTGAGCAGGGTTTTGTGTTGAAGGGATCCAAAAGGCTCCAATGTGGCCCCACAGGGGAGTGGGACAAC
 GAGAAGCCACATGTGAAGCTGTGAGATGCGATGCTGTCCACCAGCCCCGAAGGTTTTGGTGAAGTGTG
 CTCATTCCCTATTGGAGAATTCACCTACAAGTCTTGTGCCTTCAGCTGTGAGGAGGGATTTGAATT
 ACATGGATCAACTCAACTGAGTGCACATCTCAGGGACAATGGACAGAAGAGGTTCTTCTGCCAAGTG
 GTAAAATGTTCAAGCCTGGCAGTCCCGGAAAGATCAACATGAGCTGCAGTGGGAGCCCGTGTGGCA
 CTGTGTCAAGTTCGCCTGCTGAAGGATGGACGCTCAATGGCTCTGCAGCTCGGACATGTGGAGCCAC
 AGGACACTGGTCTGGCCTGCTACCTACCTGTGAAGCTCCCACTGAGTCCAACATTCCTTGGTAGCTGGA
 CTTTCTGTGCTGGACTCTCCCTCTGACATTAGCACCATTTCTCTCTGGCTTCGAAAATGCTTACGGA
 AAGCAAAGAAATTTGTTCTGCCAGCAGCTGCCAAGCCTTGAATCAGATGGAAGCTACCAAAGCCTTC
 TTACATCCTT

ACGCGTACGCGGCCGCTCGAGCAGAAACTCATCTCAGAAGAGGATCTGGCAGCAAATGATATCCTGGATT
 ACAAGGATGACGACGATAAGGTTTAA

Protein Sequence:

>RC221153 representing NM_000450
 Red=Cloning site Green=Tags(s)

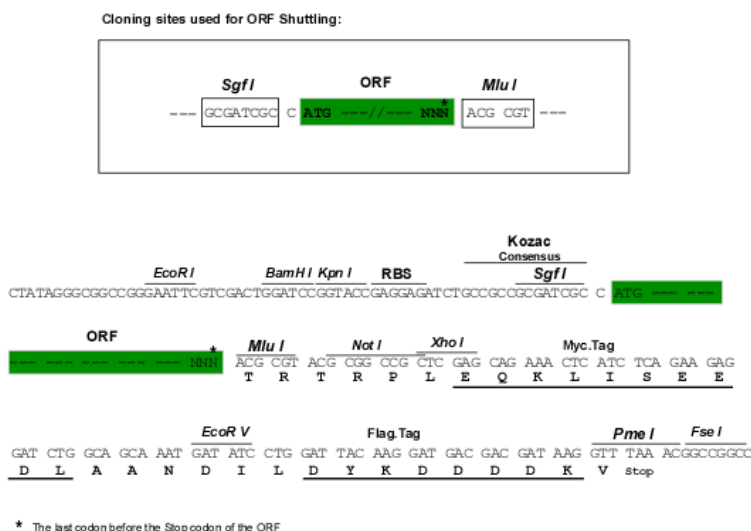
MIASQFLSALTLVLLIKESGAWSYNTSTEAMTYDEASAYCQQRHYTHLVAIQNKEEIEYLNSILSYSPSY
 WIGIRKVNNVVVVGTQKPLTEEAKNWAPGEPNNRQKDEDCVEIYIKREKDVGMWNDERCSKKLALCYT
 AACTNTSCSGHGECVETINNYTCKDPGFSGLKCEQIVNCTALESPEHGSLVCSHPLGNFSYNSSCSISC
 DRGYLPSSMETMQCMSSGEWSAPIPACNVVECDAVTNPANGFVECFQNPGSFPWNTCTFDCEEFGELMG
 AQSLQCTSSGNWDNEKPTCKAVTCRAVRQPQNGSVRCSHSPAGEFTFKSSCNFTCEEFGMLQGPQVQECT
 TQGQWTQQIPVCEAFQCTALSNPERGYMCLPSASGSFRYGSSECFSCQGFVCLKGSKRLQCGPTGEWDN
 EKPTCEAVRCDVHQPPLGLVRCASPIGEFTYKSSCAFSCSEFGFELHGSTQLECTSQGQWTEEVSPCQV
 VKCSSLAVPGKINMSCSGEPVFGTVCKFACPEGWTLNLSAARTCGATGHWGSLLPTEAPTESNIPLVAG
 LSAAGLSLLTAPFLWLRKCLRKAKKFPASSCQSLESDSYQKPSYIL

TRTRPLEQKLISEEDLAANDILDYKDDDDKV

Chromatograms: https://cdn.origene.com/chromatograms/mk6205_h02.zip

Restriction Sites: SgfI-MluI

Cloning Scheme:



ACCN: NM_000450

ORF Size: 1830 bp

OTI Disclaimer: The molecular sequence of this clone aligns with the gene accession number as a point of reference only. However, individual transcript sequences of the same gene can differ through naturally occurring variations (e.g. polymorphisms), each with its own valid existence. This clone is substantially in agreement with the reference, but a complete review of all prevailing variants is recommended prior to use. [More info](#)

OTI Annotation: This clone was engineered to express the complete ORF with an expression tag. Expression varies depending on the nature of the gene.

Components: The ORF clone is ion-exchange column purified and shipped in a 2D barcoded Matrix tube containing 10ug of transfection-ready, dried plasmid DNA (reconstitute with 100 ul of water).

Reconstitution Method:

1. Centrifuge at 5,000xg for 5min.
2. Carefully open the tube and add 100ul of sterile water to dissolve the DNA.
3. Close the tube and incubate for 10 minutes at room temperature.
4. Briefly vortex the tube and then do a quick spin (less than 5000xg) to concentrate the liquid at the bottom.
5. Store the suspended plasmid at -20°C. The DNA is stable for at least one year from date of shipping when stored at -20°C.

RefSeq: [NM_000450.2](#)

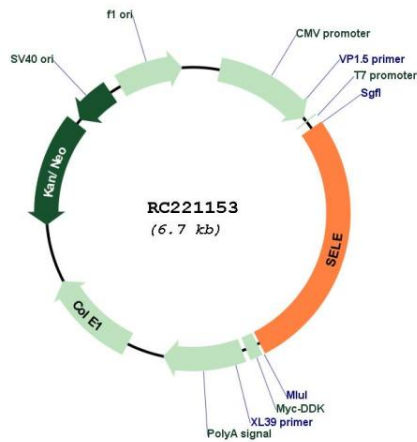
RefSeq Size: 3834 bp

RefSeq ORF: 1833 bp

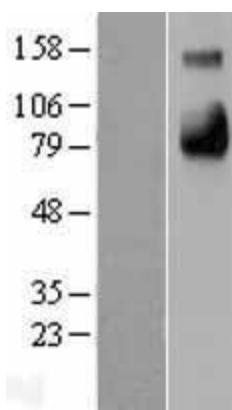
Locus ID:	6401
UniProt ID:	P16581
Cytogenetics:	1q24.2
Domains:	CCP, CLECT, EGF
Protein Families:	Druggable Genome, Transmembrane
Protein Pathways:	Cell adhesion molecules (CAMs)
MW:	66.66 kDa

Gene Summary: The protein encoded by this gene is found in cytokine-stimulated endothelial cells and is thought to be responsible for the accumulation of blood leukocytes at sites of inflammation by mediating the adhesion of cells to the vascular lining. It exhibits structural features such as the presence of lectin- and EGF-like domains followed by short consensus repeat (SCR) domains that contain 6 conserved cysteine residues. These proteins are part of the selectin family of cell adhesion molecules. Adhesion molecules participate in the interaction between leukocytes and the endothelium and appear to be involved in the pathogenesis of atherosclerosis. [provided by RefSeq, Jul 2008]

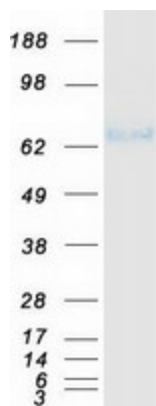
Product images:



Circular map for RC221153



Western blot validation of overexpression lysate (Cat# [LY400158]) using anti-DDK antibody (Cat# [TA50011-100]). Left: Cell lysates from untransfected HEK293T cells; Right: Cell lysates from HEK293T cells transfected with RC221153 using transfection reagent MegaTran 2.0 (Cat# [TT210002]).



Coomassie blue staining of purified SELE protein (Cat# [TP321153]). The protein was produced from HEK293T cells transfected with SELE cDNA clone (Cat# RC221153) using MegaTran 2.0 (Cat# [TT210002]).