

Product datasheet for **RC221146**

FBP2 (NM_003837) Human Tagged ORF Clone

Product data:

Product Type:	Expression Plasmids
Product Name:	FBP2 (NM_003837) Human Tagged ORF Clone
Tag:	Myc-DDK
Symbol:	FBP2
Mammalian Cell Selection:	Neomycin
Vector:	pCMV6-Entry (PS100001)
E. coli Selection:	Kanamycin (25 ug/mL)
ORF Nucleotide Sequence:	>RC221146 ORF sequence Red=Cloning site Blue=ORF Green=Tags(s)

TTTTGTAATACGACTCACTATAGGGCGGCCGGAATTCGTCGACTGGATCCGGTACCGAGGAGATCTGCC
GCC**CGATCGCC**

ATGACGGACAGAAGCCCCTTCGAAACCGACATGCTCACCTGACCCGCTACGTTATGGAAAAGGGCGTC
AGGCCAAAGGGACTGGGGAGCTCACCCAGCTGCTGAACTCAATGCTGACGGCCATCAAAGCCATCTCCTC
GGCTGTGCGCAAGGCCGGTCTGGCCACCTGTATGGAATCGCAGGAAGCGTTAACGTGACGGGAGATGAG
GTGAAGAACTGGATGTGCTATCCAATTCCTGGTGATCAACATGCTCCAATCCTCTATAGTACCTGCG
TCCTGGTCTCAGAAGAGAATAAGGACGCCATCACCAGCAAGGAGAAGAGGGGAAATACGTGGTCTG
CTTTGACCCACTGGATGGATCTTCCAATATTGACTGCCTGGCCTCCATCGGAACCATCTTTGCCATCTAT
AGAAAGACCTCAGAGGATGAGCCTTCTGAAAAGGATGCCCTGCAGTGTGGCCGCAATATTGTGGCCGAG
GTTATGCGCTGTACGGTAGTGAACCTGGTGGCTCTCTCCACAGGGCAAGGCGTGGACCTCTTCATGCT
TGACCCGGCTCTTGGTGAATTTGCTGGTGGAAAAAGATGTCAAGATTAAGAAGAAAGGAAAGATTTAC
AGCCTGAATGAGGGCTATGCCAAGTATTTGATGCGGCCACCACTGAATATGTGCAGAAAAAGAAATTC
CTGAGGATGGCAGTGCTCCCTACGGGGCCAGGTATGTGGGCTCCATGGTGGCTGACGTGCACCGCACCT
GGTCTATGGAGGAATCTCCTGTACCCAGCAACCAGAAGAGCCCTAAGGGCAAGCTCCGGCTCCTGTAT
GAATGCAATCCCCTGGCCTACATCATTGAGCAGGCAGGAGGCTTGCCGACCACGGGGACCCAGCCTGTAC
TGGACGTGAAGCCGAGGCAATTCACCAGCGAGTCCCCTCATTCTGGGGTACCAGAGGATGTGCAGGA
ATATCTCACCTGTGTGCAGAAAAATCAGGCAGGCAGC

ACGCGTACGCGGCCGCTCGAGCAGAACTCATCTCAGAAGAGGATCTGGCAGCAAATGATATCCTGGATT
ACAAGGATGACGACGATAAGGTTTAA



[View online »](#)

Protein Sequence: >RC221146 protein sequence
Red=Cloning site Green=Tags(s)

MTDRSPFETDMLTLTRYVMEKGRQAKGTGELTQLLNSMLTAIKAISSAVRKAGLAHLHYGIAGSVNVTGDE
 VKKLDVLSNSLVINMLQSSYSTCVLVSEENKDAIITAKEKRGKYVVCDFPLDGSSNIDCLASIGTIFAIY
 RKTSEDEPSEKDALQCGRNIVAAGYALYGSATLVALSTGQGVDFMLDPALGEFVLVEKDVKIKKKGKIY
 SLNEGYAKYFDAATTEYVQKKKFPEDGSAPYGARYVGSVMADVHRTL VYGGIFL YPANQKSPKGLRLLY
 ECNPVAYIIEQAGGLATTGTQPVLDVKPEAIHQRVPLILGSPEDVQEYLTVCVQKNQAGS

TRTRPLEQKLISEEDLAANDILDYKDDDDKV

Chromatograms: https://cdn.origene.com/chromatograms/mk6462_b05.zip

Restriction Sites: SgfI-MluI

Cloning Scheme:

Cloning sites used for ORF Shuttling:



* The last codon before the Stop codon of the ORF

ACCN: NM_003837

ORF Size: 1017 bp

OTI Disclaimer: The molecular sequence of this clone aligns with the gene accession number as a point of reference only. However, individual transcript sequences of the same gene can differ through naturally occurring variations (e.g. polymorphisms), each with its own valid existence. This clone is substantially in agreement with the reference, but a complete review of all prevailing variants is recommended prior to use. [More info](#)

OTI Annotation: This clone was engineered to express the complete ORF with an expression tag. Expression varies depending on the nature of the gene.

Components: The ORF clone is ion-exchange column purified and shipped in a 2D barcoded Matrix tube containing 10ug of transfection-ready, dried plasmid DNA (reconstitute with 100 ul of water).

Reconstitution Method:

1. Centrifuge at 5,000xg for 5min.
2. Carefully open the tube and add 100ul of sterile water to dissolve the DNA.
3. Close the tube and incubate for 10 minutes at room temperature.
4. Briefly vortex the tube and then do a quick spin (less than 5000xg) to concentrate the liquid at the bottom.
5. Store the suspended plasmid at -20°C. The DNA is stable for at least one year from date of shipping when stored at -20°C.

RefSeq: [NM_003837.4](#)

RefSeq Size: 1367 bp

RefSeq ORF: 1020 bp

Locus ID: 8789

UniProt ID: [O00757](#)

Cytogenetics: 9q22.32

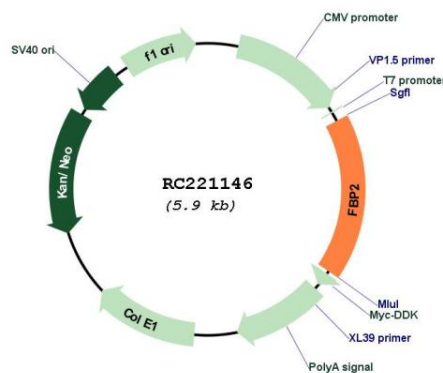
Protein Families: Druggable Genome

Protein Pathways: Fructose and mannose metabolism, Glycolysis / Gluconeogenesis, Insulin signaling pathway, Metabolic pathways, Pentose phosphate pathway

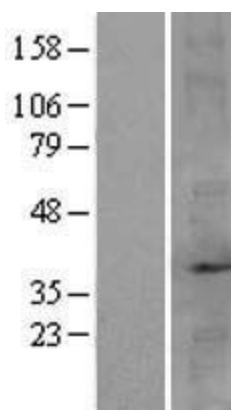
MW: 36.8 kDa

Gene Summary: This gene encodes a gluconeogenesis regulatory enzyme which catalyzes the hydrolysis of fructose 1,6-bisphosphate to fructose 6-phosphate and inorganic phosphate. [provided by RefSeq, Jul 2008]

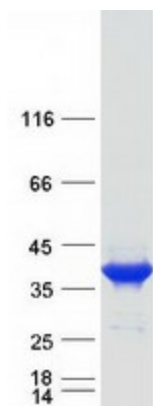
Product images:



Circular map for RC221146



Western blot validation of overexpression lysate (Cat# [LY418397]) using anti-DDK antibody (Cat# [TA50011-100]). Left: Cell lysates from untransfected HEK293T cells; Right: Cell lysates from HEK293T cells transfected with RC221146 using transfection reagent MegaTran 2.0 (Cat# [TT210002]).



Coomassie blue staining of purified FBP2 protein (Cat# [TP321146]). The protein was produced from HEK293T cells transfected with FBP2 cDNA clone (Cat# RC221146) using MegaTran 2.0 (Cat# [TT210002]).