

Product datasheet for RC221137

ORAI2 (NM_032831) Human Tagged ORF Clone

Product data:

Product Type: Expression Plasmids
Product Name: ORAI2 (NM_032831) Human Tagged ORF Clone
Tag: Myc-DDK
Symbol: ORAI2
Synonyms: C7orf19; CBCIP2; MEM142B; TMEM142B
Mammalian Cell Selection: Neomycin
Vector: pCMV6-Entry (PS100001)
E. coli Selection: Kanamycin (25 ug/mL)
ORF Nucleotide Sequence: >RC221137 representing NM_032831
Red=Cloning site Blue=ORF Green=Tags(s)

TTTTGTAATACGACTCACTATAGGGCGGCCGGAATTCGTCGACTGGATCCGGTACCGAGGAGATCTGCC
GCC**CGATCGCC**

ATGAGTGCTGAGCTTAACGTGCCTATCGACCCCTCTGCTCCTGCCTGCCCTGAGCCCGGCCATAAGGGCA
TGGATTACCGGGACTGGTCCGCCGAGCTACCTGGAAGTGGTCACTCTAACCACCACTCGGTACAGGC
CCTGTCGTGGCGGAAGCTCTACCTGAGCAGGGCAAGCTGAAGGCCTCCAGCAGGACCTCCGCCCTCCTC
TCCGGCTTGGCCATGGTGGCCATGGTGGAGGTGCAGCTGGAGACGCAGTACCAGTACCCGCGCCGCTGC
TGATTGCCTTCAGCGCCTGCACCAGGTGCTGGTGGCCGTGCACCTGTTCCGCCCTCCTCATCAGCACCTG
CATCCTGCCCAATGTGGAGGCCGTGAGCAACATCCACAACCTGAACTCCATCAGCGAGTCCCGCATGAG
CGCATGCATCCCTACATCGAGCTGGCCTGGGGTCTCCACCGTCTGGCATCCTACTTCTCTGGCCG
AGGTGGTCTGCTCTGCTGGATCAAGTTCCTCCCGTGGATGCCCGGCCAGCCTGGCCCCCACCTGG
CCCTGGGAGTCACACGGGCTGGCAGGCCGCCCTGGTGTCCACCATCATCATGGTGGCCGTGGGCCTCATC
TTCGTGGTCTTCACCATCCACTTCTACCGCTCCCTGGTGCGCCACAAAACGGAGCGCCACAACCGCGAGA
TCGAGGAGCTCCACAAGCTCAAGTCCAGCTGGACGGGCATGAGCGCAGCCTGCAGGTCTTG

ACGCGTACGCGGCCGCTCGAGCAGAACTCATCTCAGAAGAGGATCTGGCAGCAAATGATATCCTGGATT
ACAAGGATGACGACGATAAGGTTTAA



[View online »](#)

Reconstitution Method:

1. Centrifuge at 5,000xg for 5min.
2. Carefully open the tube and add 100ul of sterile water to dissolve the DNA.
3. Close the tube and incubate for 10 minutes at room temperature.
4. Briefly vortex the tube and then do a quick spin (less than 5000xg) to concentrate the liquid at the bottom.
5. Store the suspended plasmid at -20°C. The DNA is stable for at least one year from date of shipping when stored at -20°C.

RefSeq: [NM_032831.4](#)

RefSeq Size: 2527 bp

RefSeq ORF: 765 bp

Locus ID: 80228

UniProt ID: [Q96SN7](#)

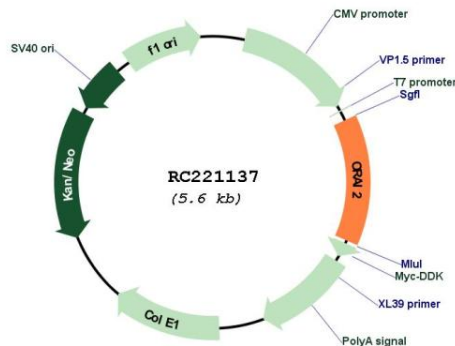
Cytogenetics: 7q22.1

Protein Families: Transmembrane

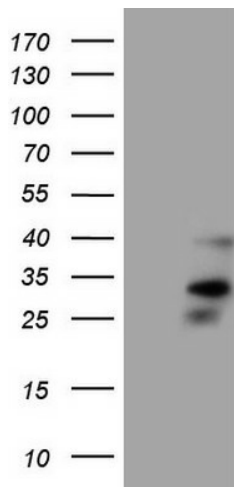
MW: 28.4 kDa

Gene Summary: Ca(2+) release-activated Ca(2+)-like (CRAC-like) channel subunit which mediates Ca(2+) influx and increase in Ca(2+)-selective current by synergy with the Ca(2+) sensor, STIM1. [UniProtKB/Swiss-Prot Function]

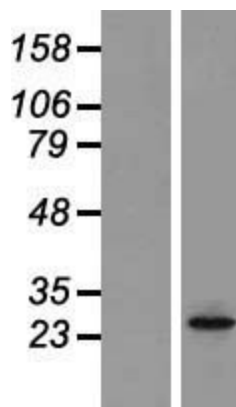
Product images:



Circular map for RC221137



HEK293T cells were transfected with the pCMV6-ENTRY control (Cat# [PS100001], Left lane) or pCMV6-ENTRY Orai2 (Cat# RC221137, Right lane) cDNA for 48 hrs and lysed. Equivalent amounts of cell lysates (5 ug per lane) were separated by SDS-PAGE and immunoblotted with anti-Orai2 (Cat# [TA807500])(1:500). Positive lysates [LY409919] (100ug) and [LC409919] (20ug) can be purchased separately from OriGene.



Western blot validation of overexpression lysate (Cat# [LY426680]) using anti-DDK antibody (Cat# [TA50011-100]). Left: Cell lysates from untransfected HEK293T cells; Right: Cell lysates from HEK293T cells transfected with [RC225330] using transfection reagent MegaTran 2.0 (Cat# [TT210002]).