

Product datasheet for RC221132

TREM2 (NM_018965) Human Tagged ORF Clone

Product data:

Product Type:	Expression Plasmids
Product Name:	TREM2 (NM_018965) Human Tagged ORF Clone
Tag:	Myc-DDK
Symbol:	TREM2
Synonyms:	PLOSL2; TREM-2; Trem2a; Trem2b; Trem2c
Mammalian Cell Selection:	Neomycin
Vector:	pCMV6-Entry (PS100001)
E. coli Selection:	Kanamycin (25 ug/mL)
ORF Nucleotide Sequence:	>RC221132 representing NM_018965 Red=Cloning site Blue=ORF Green=Tags(s)

TTTTGTAATACGACTCACTATAGGGCGCCGGGAATTCGTCGACTGGATCCGGTACCGAGGAGATCTGCCGCCCGATCGCC

ATGGAGCCTCTCCGGCTGCTCATCTTACTCTTTGTCACAGAGCTGTCCGGAGCCACAACACCACAGTGTCCAGGGCGTGGCGGGCCAGTCCCTGCAGGTGTCTTGCCCTATGACTCCATGAAGCACTGGGGAGGCGCAAGGCCTGGTCCCGCCAGCTGGGAGAGAAGGGCCATGCCAGCGTGTGGTCAGCACGCACAACCTTGTTGCTGCTGCTTCTGAGGAGTGAATGGGAGCACAGCCATCAAAGACGATACCTGGGTGGCACTCTCACATTACGCTGCGGAATCTACAACCCATGATGCGGGTCTCTACCAGTGCAGAGCCTCCATGGCAGTGAAGCTGACACCCCTCAGGAAGGTCCCTGGTGGAGGTGCTGGCAGACCCCTGGATCACCGGGATGCTGGAGATCTCTGGTTCCCGGGGAGTCTGAGAGCTTCGAGGATGCCATGTGGAGCACAGCATCTCCAGGAGCCTCTGGAAGGAGAAATCCCCTTCCCACCCACTTCCATCCTTCTCCTCCTGGCCTGCATCTTTCTCATCAAGATCTAGCAGCCAGCGCCCTCTGGGCTGCAGCCTGGCATGGACAGAAAGCCAGGGACACATCCACCCAGTGAACTGGACTGTGGCCATGACCCAGGGTATCAGCTCCAAACTCTGCCAGGGCTGAGAGACCG

ACGCGTACGCGGGCGCTCGAGCAGAACTCATCTCAGAAGAGGATCTGGCAGCAAATGATATCCTGGATTACAAGGATGACGACGATAAGGTTTAA



[View online »](#)

Protein Sequence: >RC221132 representing NM_018965
Red=Cloning site Green=Tags(s)

MEPLRLLILLFVTELSGAHNTTVFQGVAGQSLQVSCPYDSMKHWGRRKAWCRQLGEKGPCQRVVSTHNLW
 LLSFLRRWNGSTAIKDDTLGGTLTITLRLNQPHDAGLYQCQSLHGSEADTLRKVLVEVLADPLDHRDAGD
 LWFPGESESFEDAHVHSISRSLLEGEIPFPPTSILLLLACIFLIKILAASALWAAAWHGQKPGTHPPSE
 LDCGHDPGYQLQTLPLGRDIT

TRTRPLEQKLISEEDLAANDILDYKDDDDKV

Chromatograms: https://cdn.origene.com/chromatograms/mk6491_g01.zip

Restriction Sites: SgfI-MluI

Cloning Scheme:



ACCN: NM_018965

ORF Size: 690 bp

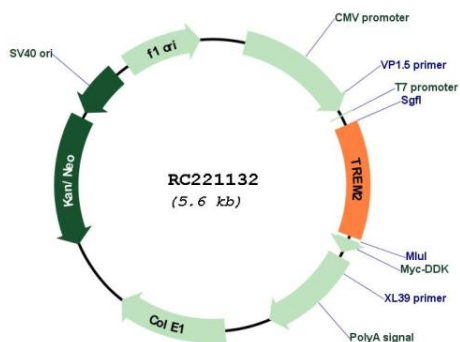
OTI Disclaimer: The molecular sequence of this clone aligns with the gene accession number as a point of reference only. However, individual transcript sequences of the same gene can differ through naturally occurring variations (e.g. polymorphisms), each with its own valid existence. This clone is substantially in agreement with the reference, but a complete review of all prevailing variants is recommended prior to use. [More info](#)

OTI Annotation: This clone was engineered to express the complete ORF with an expression tag. Expression varies depending on the nature of the gene.

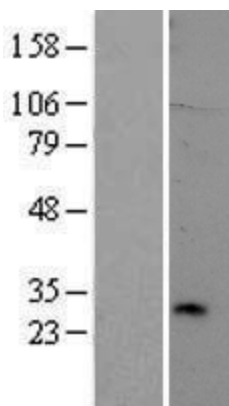
Components: The ORF clone is ion-exchange column purified and shipped in a 2D barcoded Matrix tube containing 10ug of transfection-ready, dried plasmid DNA (reconstitute with 100 ul of water).

Reconstitution Method:	<ol style="list-style-type: none">1. Centrifuge at 5,000xg for 5min.2. Carefully open the tube and add 100ul of sterile water to dissolve the DNA.3. Close the tube and incubate for 10 minutes at room temperature.4. Briefly vortex the tube and then do a quick spin (less than 5000xg) to concentrate the liquid at the bottom.5. Store the suspended plasmid at -20°C. The DNA is stable for at least one year from date of shipping when stored at -20°C.
Note:	Plasmids are not sterile. For experiments where strict sterility is required, filtration with 0.22um filter is required.
RefSeq:	NM_018965.4
RefSeq Size:	1041 bp
RefSeq ORF:	693 bp
Locus ID:	54209
UniProt ID:	Q9NZC2
Cytogenetics:	6p21.1
Protein Families:	Druggable Genome, Secreted Protein, Transmembrane
MW:	23.4 kDa
Gene Summary:	This gene encodes a membrane protein that forms a receptor signaling complex with the TYRO protein tyrosine kinase binding protein. The encoded protein functions in immune response and may be involved in chronic inflammation by triggering the production of constitutive inflammatory cytokines. Defects in this gene are a cause of polycystic lipomembranous osteodysplasia with sclerosing leukoencephalopathy (PLOS). Alternative splicing results in multiple transcript variants encoding different isoforms. [provided by RefSeq, Nov 2012]

Product images:



Circular map for RC221132



Western blot validation of overexpression lysate (Cat# [LY412853]) using anti-DDK antibody (Cat# [TA50011-100]). Left: Cell lysates from untransfected HEK293T cells; Right: Cell lysates from HEK293T cells transfected with RC221132 using transfection reagent MegaTran 2.0 (Cat# [TT210002]).