

Product datasheet for RC221130

UBE2W (NM_001001481) Human Tagged ORF Clone

Product data:

Product Type:	Expression Plasmids
Product Name:	UBE2W (NM_001001481) Human Tagged ORF Clone
Tag:	Myc-DDK
Symbol:	UBE2W
Synonyms:	UBC-16; UBC16
Mammalian Cell Selection:	Neomycin
Vector:	pCMV6-Entry (PS100001)
E. coli Selection:	Kanamycin (25 ug/mL)
Restriction Sites:	SgfI-MluI
Cloning Scheme:	

Cloning sites used for ORF Shuttling:



* The last codon before the Stop codon of the ORF

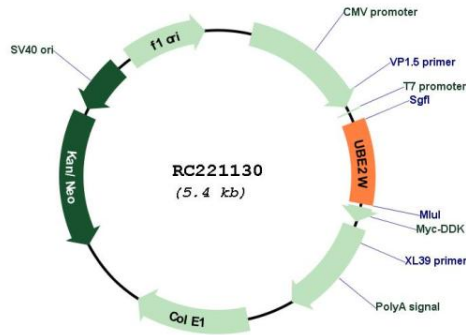
ACCN:	NM_001001481
ORF Size:	486 bp



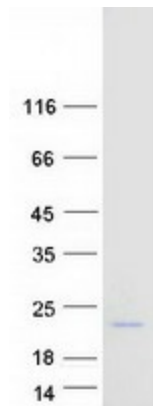
[View online >](#)

OTI Disclaimer:	The molecular sequence of this clone aligns with the gene accession number as a point of reference only. However, individual transcript sequences of the same gene can differ through naturally occurring variations (e.g. polymorphisms), each with its own valid existence. This clone is substantially in agreement with the reference, but a complete review of all prevailing variants is recommended prior to use. More info
OTI Annotation:	This clone was engineered to express the complete ORF with an expression tag. Expression varies depending on the nature of the gene.
Components:	The ORF clone is ion-exchange column purified and shipped in a 2D barcoded Matrix tube containing 10ug of transfection-ready, dried plasmid DNA (reconstitute with 100 ul of water).
Reconstitution Method:	<ol style="list-style-type: none">1. Centrifuge at 5,000xg for 5min.2. Carefully open the tube and add 100ul of sterile water to dissolve the DNA.3. Close the tube and incubate for 10 minutes at room temperature.4. Briefly vortex the tube and then do a quick spin (less than 5000xg) to concentrate the liquid at the bottom.5. Store the suspended plasmid at -20°C. The DNA is stable for at least one year from date of shipping when stored at -20°C.
RefSeq:	NM_001001481.1 , NP_001001481.1
RefSeq Size:	4057 bp
RefSeq ORF:	489 bp
Locus ID:	55284
UniProt ID:	Q96B02
Cytogenetics:	8q21.11
Protein Families:	Transcription Factors
Protein Pathways:	Ubiquitin mediated proteolysis
MW:	18.5 kDa
Gene Summary:	This gene encodes a nuclear-localized ubiquitin-conjugating enzyme (E2) that, along with ubiquitin-activating (E1) and ligating (E3) enzymes, coordinates the addition of a ubiquitin moiety to existing proteins. The encoded protein promotes the ubiquitination of Fanconi anemia complementation group proteins and may be important in the repair of DNA damage. There is a pseudogene for this gene on chromosome 1. Alternative splicing results in multiple transcript variants. [provided by RefSeq, Aug 2012]

Product images:



Circular map for RC221130



Coomassie blue staining of purified UBE2W protein (Cat# [TP321130]). The protein was produced from HEK293T cells transfected with UBE2W cDNA clone (Cat# RC221130) using MegaTran 2.0 (Cat# [TT210002]).