

Product datasheet for **RC221128**

HAS3 (NM_005329) Human Tagged ORF Clone

Product data:

Product Type:	Expression Plasmids
Product Name:	HAS3 (NM_005329) Human Tagged ORF Clone
Tag:	Myc-DDK
Symbol:	HAS3
Mammalian Cell Selection:	Neomycin
Vector:	pCMV6-Entry (PS100001)
E. coli Selection:	Kanamycin (25 ug/mL)



[View online »](#)

ORF Nucleotide Sequence:

>RC221128 representing NM_005329
 Red=Cloning site Blue=ORF Green=Tags(s)

TTTTGTAATACGACTCACTATAGGGCGGCCGGAATTCGTCGACTGGATCCGGTACCGAGGAGATCTGCC
 GCC**GCGATCGCC**

ATGCCGGTGCAGCTGACGACAGCCCTGCGTGTGGTGGCACCAGCCTGTTTGCCTGGCAGTGCTGGGTG
 GCATCCTGGCAGCCTATGTGACGGGCTACCAGTTCATCCACACGAAAAGCACTACTGTCTTCGGCCT
 GTACGGCGCCATCCTGGGCTGCACCTGCTCATTAGAGCCTTTTTGCCTTCTGGAGCACCGGCGCATG
 CGAGCTGCCGGCCAGGCCCTGAAGCTGCCTCCCCGCGCGGGGCTCGGTGGCACTGTGCATTGCCGCGT
 ACCAGGAGGACCCTGACTACTTGCCAAGTGCCTGCGCTCGGCCAGCGCATCTCCTTCCCTGACCTCAA
 GGTGGTCAATGGTGGTGGATGGCAACCGCCAGGAGGACGCCTACATGCTGGACATCTCCACGAGGTGCTG
 GGCGGCACCGAGCAGGCCGGCTCTTTGTGTGGCGCAGCAACTCCATGAGGCAGGCGAGGGTGAGACGG
 AGGCCAGCCTGCAGGAGGCATGGACCGTGTGCGGGATGTGGTGGCGGCCAGCACCTTCTCGTGCATCAT
 GCAGAAGTGGGGAGGCAAGCGCGAGGTCATGTACACGGCCTTCAAGGCCCTCGGCGATTCCGTGGACTAC
 ATCCAGGTGTGCGACTCTGACACTGTGCTGGATCCAGCCTGCACCATCGAGATGCTTCGAGTCTGGAGG
 AGGATCCCAAGTAGGGGAGTCCGGGGAGATGTCAGATCCTCAACAAGTACGACTCATGGATTCCTT
 CCTGAGCAGCGTGCAGTACTGGATGGCCTTCAACGTGGAGCGGGCCTGCCAGTCTACTTTGGTGTGTG
 CAGTGTATTAGTGGGCCCTTGGGCATGTACCGAACAGCCTCCTCCAGCAGTTCCTGGAGGACTGGTACC
 ATCAGAAGTTCCTAGGCAGCAAGTGCAGCTTCCGGGATGACCGGCACCTCACCAACCGAGTCTGAGCCT
 TGGCTACCGAAGTAAAGTATACCGCGCGTCCAAGTGCCTCACAGAGACCCCACTAAGTACCTCCGGTGG
 CTCAACCGAGCAACCCGCTGGAGCAAGTCTTACTTCCGGGAGTGGCTCTACAACCTCTGTGGTTCCATA
 AGCACCACTCTGGATGACCTACGAGTCAAGTGGTACGGGTTTCTCCCTTCTTCCCTCATTGCCACGGT
 TATACAGCTTTTCTACCGGGCCGCATCTGGAACATTCTCCTCTTCTGCTGACGGTGCAGCTGGTGGGC
 ATTATCAAGGCCACTACGCCTGCTTCTTCCGGGCAATGCAGAGATGATCTTATGTCCCTCTACTCCC
 TCCTCTATATGTCCAGCCTTCTGCCGGCAAGATCTTTGCCATTGCTACCATCAACAAATCTGGCTGGGG
 CACCTCTGGCCGAAAACCATTGTGGTGAACCTTATTGGCCTCATTCTGTGCCATCTGGGTGGCAGTT
 CTCCTGGGAGGGCTGGCCTACACAGCTTATTGCCAGGACCTGTTCAAGTGGAGACAGAGCTAGCCTTCTTG
 TCTCTGGGCTATACTGTATGGCTGCTACTGGGTGGCCCTCTCATGCTATATCTGGCCATCATCGCCC
 GCGATGTGGGAAGAAGCCGGAGCAGTACAGCTTGGCTTTTCTGAGGTG

ACGCGTACGCGGCCGCTCGAGCAGAAACTCATCTCAGAAGAGGATCTGGCAGCAAATGATATCCTGGATT
 ACAAGGATGACGACGATAAGGTTTAA

Protein Sequence:

>RC221128 representing NM_005329
 Red=Cloning site Green=Tags(s)

MPVQLTTALRVVGTSLFALAVLGGILAAVVTGYQFIHTEKHYLSFGLYGAILGLHLLIQSLFAFLEHRRM
 RRAGQALKLPSRRGSVALCIAAYQEDPDYLRKCLRSAQRISFPDLKVVMMVVDGNRQEDAYMLDIFHEVL
 GGTEQAGFFVWRSNFHEAGEGETEASLQEGMDRVRDVVRASTFSCIMQKWGGKREVMYAFKALGDSVDY
 IQVCDSDTVLDPACTIEMLRVLEEDPQVGGVGGDVQILNKYDSWISFLSSVRYWMAFNVERACQSYFGCV
 QCISGPLGMYRNSLLQQFLEDWYHQKFLGSKCSFGDDRHLTNRVLSLGYRKYTARSKCLTETPTKYLRW
 LNQQTRWSKSYFREWLNSLWFHKKHLLWMTYESVVTGFFPFLIATVIQLFYRGRINILLFLLTVQLVG
 I IKATYACFLRGAEMIFMSLYSLLYMSLLPAKIFAIATINKSGWGTSGRKTIVNFIGLIPVSIWVAV
 LLGGLAYTAYCQDLFSETELAFLVSGAILYGCYWVALLMLYLAIIARRCGKKPEQYSLFAEV

TRTRPLEQKLISEEDLAANDILDYKDDDDKV

Chromatograms:

https://cdn.origene.com/chromatograms/mk6501_g01.zip

Restriction Sites:

Sgfl-Mlul

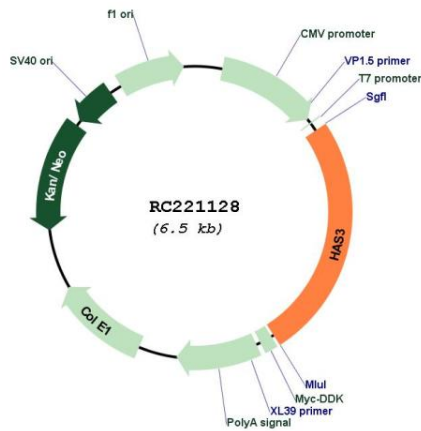
Cytogenetics: 16q22.1

Protein Families: Transmembrane

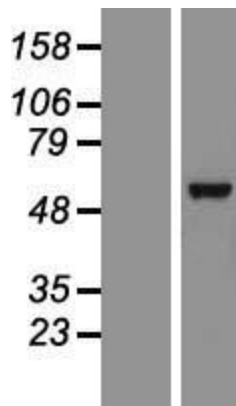
MW: 62.8 kDa

Gene Summary: The protein encoded by this gene is involved in the synthesis of the unbranched glycosaminoglycan hyaluronan, or hyaluronic acid, which is a major constituent of the extracellular matrix. This gene is a member of the NODC/HAS gene family. Compared to the proteins encoded by other members of this gene family, this protein appears to be more of a regulator of hyaluronan synthesis. Alternative splicing results in multiple transcript variants. [provided by RefSeq, Dec 2010]

Product images:



Circular map for RC221128



Western blot validation of overexpression lysate (Cat# [LY417376]) using anti-DDK antibody (Cat# [TA50011-100]). Left: Cell lysates from untransfected HEK293T cells; Right: Cell lysates from HEK293T cells transfected with RC221128 using transfection reagent MegaTran 2.0 (Cat# [TT210002]).