

## Product datasheet for **RC221119**

### **APOA1BP (NAXE) (NM\_144772) Human Tagged ORF Clone**

#### Product data:

Product Type:	Expression Plasmids
Product Name:	APOA1BP (NAXE) (NM_144772) Human Tagged ORF Clone
Tag:	Myc-DDK
Symbol:	APOA1BP
Synonyms:	AIBP; APOA1BP; PEBEL; YJEFN1
Mammalian Cell Selection:	Neomycin
Vector:	pCMV6-Entry (PS100001)
E. coli Selection:	Kanamycin (25 ug/mL)
ORF Nucleotide Sequence:	>RC221119 ORF sequence Red=Cloning site Blue=ORF Green=Tags(s)

TTTTGTAATACGACTCACTATAGGGCGCCGGGAATTCGTCGACTGGATCCGGTACCGAGGAGATCTGCC  
GCC**CGGATCGCC**

ATGTCCAGGCTGCGGGCGCTGCTGGCCTCGGGCTGCTGGTTGCGGGCTCGCGCCTGCCGCGGATCAAAA  
GCCAGACCATCGCCTGTCGCTCGGGACCCACCTGGTGGGACCGCAGCGGCTGAACTCGGGTGGCCGCTG  
GGACTCAGAGGTCATGGCGAGCACGGTGGTGAAGTACCTGAGCCAGGAGGAGGCCAGGCCGTGGACCAG  
GAGCTATTTAACGAATACCAGTTCAGCGTGGACCAACTTATGAACTGGCCGGGCTGAGCTGTGCTACAG  
CCATCGCCAAGGCATATCCCCCAGTCCATGTCCAGGAGCCCCCTACTGTCCTGGTCATCTGTGGCCC  
GGGAATAATGGAGGAGATGGTCTGGTCTGTGCTCGACACCTCAAACCTTTGGCTACGAAACCAACCATC  
TATTACCCAAAAGGCCTAACAGCCCTCTTCACTGCATTGGTGACCCAGTGTCAGAAAATGGACATCC  
CTTTCTTGGGAAATGCCCGCAGAGCCCATGACGATTGATGAACTGTATGAGCTGGTGGTGGATGCCAT  
CTTTGGCTTCAGCTTCAAGGGCGATGTTCCGGAACCGTCCACAGCATCCTGAGTGTCTGAAGGGACTC  
ACTGTGCCATTGCCAGCATCGACATCCCTCAGGATGGGACGTGGAGAAGGAAATGCTGGAGGGATCC  
AGCCAGACTTGCTCATCTCCCTCACAGCCCCAAAAAATCTGCAACCCAGTTTACCGTGCCTACCATTA  
CCTGGGGGTGTTTTGTGCCACCTGCTCTGAAAAAGAAGTACCAGCTGAACTGCCACCCTACCCTGAC  
ACTGAGTGTGCTATCGTCTGCAG

**ACGCGT**ACGCGGGCGCTCGAGCAGAAACTCATCTCAGAAGAGGATCTGGCAGCAAATGATATCCTGGATT  
ACAAGGATGACGACGATAAGGTTTAA



[View online »](#)

**Protein Sequence:** >RC221119 protein sequence  
Red=Cloning site Green=Tags(s)

MSRLRALLGLLLVAGSRLPRIKSQTIACRSRGPTWWGPQRLNSGGRWDSEVMAS TVVKYLSQEEAQA VDQ  
 ELFNEYQF SVDQLMELAGL SCATAIAKAYPPTSMRSRPPTVLVICGPGNGGDGLV CARHLKLF GYEPTI  
 YYPKRPNKPLFTALVTQCQKMDIPFLGEMPAEPM TIDEL YELVDAIFGF SFGKGDVREP FHSILSVLKGL  
 TVPIASIDIPSGWDVEKGNAGGIQPDLLISL TAPKKSATQFTGRYHYLGGRFVPPALEKKYQLNLPPYPD  
 TECVYRLQ

TRTRPLEQKLISEEDLAANDILDYKDDDDKV

**Chromatograms:** [https://cdn.origene.com/chromatograms/mk6559\\_f12.zip](https://cdn.origene.com/chromatograms/mk6559_f12.zip)

**Restriction Sites:** SgfI-MluI

**Cloning Scheme:**



**ACCN:** NM\_144772

**ORF Size:** 864 bp

**OTI Disclaimer:** The molecular sequence of this clone aligns with the gene accession number as a point of reference only. However, individual transcript sequences of the same gene can differ through naturally occurring variations (e.g. polymorphisms), each with its own valid existence. This clone is substantially in agreement with the reference, but a complete review of all prevailing variants is recommended prior to use. [More info](#)

**OTI Annotation:** This clone was engineered to express the complete ORF with an expression tag. Expression varies depending on the nature of the gene.

**Components:** The ORF clone is ion-exchange column purified and shipped in a 2D barcoded Matrix tube containing 10ug of transfection-ready, dried plasmid DNA (reconstitute with 100 ul of water).

**Reconstitution Method:**

1. Centrifuge at 5,000xg for 5min.
2. Carefully open the tube and add 100ul of sterile water to dissolve the DNA.
3. Close the tube and incubate for 10 minutes at room temperature.
4. Briefly vortex the tube and then do a quick spin (less than 5000xg) to concentrate the liquid at the bottom.
5. Store the suspended plasmid at -20°C. The DNA is stable for at least one year from date of shipping when stored at -20°C.

**RefSeq:** [NM\\_144772.3](#)

**RefSeq Size:** 1121 bp

**RefSeq ORF:** 867 bp

**Locus ID:** 128240

**UniProt ID:** [Q8NCW5](#)

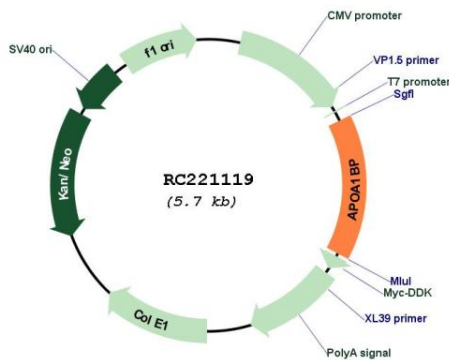
**Cytogenetics:** 1q22

**Domains:** YjeF\_N

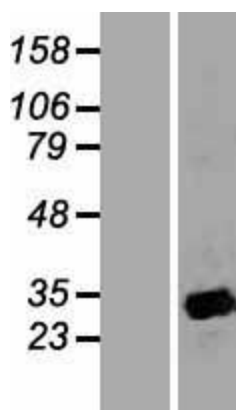
**MW:** 31.7 kDa

**Gene Summary:** The product of this gene interacts with apolipoprotein A-I (apoA-I), the major apolipoprotein of high-density lipoproteins (HDLs). It is secreted into some bodily fluids, and its synthesis and secretion are stimulated in vitro by incubating cells with apoA-I. The human genome contains related pseudogenes. [provided by RefSeq, Jul 2008]

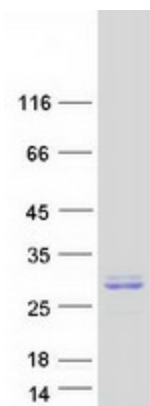
## Product images:



Circular map for RC221119



Western blot validation of overexpression lysate (Cat# [LY408111]) using anti-DDK antibody (Cat# [TA50011-100]). Left: Cell lysates from untransfected HEK293T cells; Right: Cell lysates from HEK293T cells transfected with RC221119 using transfection reagent MegaTran 2.0 (Cat# [TT210002]).



Coomassie blue staining of purified NAXE protein (Cat# [TP321119]). The protein was produced from HEK293T cells transfected with NAXE cDNA clone (Cat# RC221119) using MegaTran 2.0 (Cat# [TT210002]).