

Product datasheet for RC221118

SORBS2 (NM_021069) Human Tagged ORF Clone

Product data:

Product Type:	Expression Plasmids
Product Name:	SORBS2 (NM_021069) Human Tagged ORF Clone
Tag:	Myc-DDK
Symbol:	SORBS2
Synonyms:	ARGBP2; PRO0618
Mammalian Cell Selection:	Neomycin
Vector:	pCMV6-Entry (PS100001)
E. coli Selection:	Kanamycin (25 ug/mL)
ORF Nucleotide Sequence:	>RC221118 representing NM_021069 Red=Cloning site Blue=ORF Green=Tags(s)

TTTTGTAATACGACTCACTATAGGGCGGCCGGAATTCGTCGACTGGATCCGGTACCGAGGAGATCTGCC
GCC**CGATCGCC**

ATGAGTTACTATCAGAGGCCGTTTTCCCCCTCGGCATATTCTCTCCAGCCTCACTCAACTCCAGCATTG
TCATGCAGCACGGCACATCCCTCGATTCCACAGACACATATCCCCAGCATGCGCAGTCTCTGGATGGCAC
CACCAGCAGCTCTATCCCCGTACCGATCCTCAGAGGAAGAGAAGAGAGTGACAGTCATCAAAGCCCCG
CATTACCCAGGGATCGGGCCCGTGGATGAATCCGGAATCCCACAGCAATTAGAACGACAGTCGACCCGGC
CCAAGGACTGGTACAAGACGATGTTAAGCAAATTCACATGGTGCACAAGCCGGATGATGACACAGACAT
GTATAATACTCCTTATACATAACAATGCAGGTCTGTACAACCCACCTACAGTGCTCAGTCACACCCTGCT
GCAAAGACCCAAACCTACAGACCTCTTTCCAAAAGCCACTCCGACAACAGCCCCAATGCCTTTAAGGATG
CGTCTCCCCAGTGCCTCCCCACATGTTCCACCTCCAGTCCCAGCGCTTCGACCAAGAGATCGGTCTTC
AACAGAAAAGCATGACTGGGATCCTCCAGACAGAAAAGTGGACACAAGAAAATTTTCGGTCTGAGCCAAGG
AGTATTTTTGAATATGAACCTGGCAAGTCATCAATTTCTCAGCATGAAAGACCAGCCTCCTTGATCAGT
CCTCTATAGACAGAAGCCTGGAAGACCCATGAGTCTGCAAGCATGGCCAGTGACTTCAGGAAGCGGAG
GAAGAGCGAGCCTGCAGTGGTCCACCACGGGGCTTGGGAGATCAAAGTGCAGCAGGACTAGCCCCAGGC
CGAGTGGACCTCCAGGATCAAGCACCACTTTACAAAGTCTTTCACTAGCTCTTCTCCTTCTTCCCCAT
CAAGAGCAAAAGGTGGGATGATAGCAAAATATGTCCATCCCTTTGCAGTTACTCAGGGCTCAACGGCAA
CCCCCTCAGTGAGTTAGATTACTGTAGCACTTACAGACAGCACTTGGATGTCCCTCGGGACTCACCAAGA
GCCATTAGTTTCAAGAACGGCTGGCAAATGGCCCGGCAAAACGCAGAAATCTGGAGCAGCAGGAAGAAA
CCGTCTCTCCAAAATCAAATCCCGGAGCTGTGACGATCTCCTAAACGACGACTGCGATAGCTTCCCGGA
CCCGAAAGTCAAGTCGGAAGCATGGGCTCCCTGTTATGTGAGGAGGACTCCAAGGAGAGCTGCCCCATG
GCGTGGGGTCCCCCTACGTCCCGGAGTTTCGAGTAACGGCAGATCAAGGATCAGACACAGGTGAGCCC
GCAACGCCCGGGTTCTGAAGATGTACAAGAAAATGCACCGCATCAACCGCAAGGACCTGATGAACTC
CGAGGTGATCTGCTCCGTAAGTCCAGGATTCTGCAGTACGAGAGCGAGCAGCAGCAAGGACCTGCTG



[View online »](#)

CGCGCCTGGAGCCAGTGCTCCACGGAGGAGGTGCCCCGGGACATGGTGCCACACGCATCTCCGAATTTCG
 AAAAGCTGATCCAGAAGTCCAAATCCATGCCAAATTTAGGGGATGACATGCTGTCTCCCGTAACCCCTAGA
 ACCACCGCAAAATGGCCTATGTCCCAAGAGGAGGTTTTCCATTGAGTATTTGCTGGAGGAAGAAAATCAA
 AGCGGCCCCCCGCTCGGGGCCGGCAGGCTGCCAGTCTAACGCCTGGTGCCATTACATTGAAGTCA
 CCAGCGATGAGCAGCCCCGAGCACACGTGGAGTTTTCCGACAGCGACCAGGACGGGTTGTGCCACCA
 CAGTGACTACATTACCTAGAGGGGTATCCTTCTGCAGTGAAAGTGACTTTGATCACTTTTCTTCCACA
 TCCTCCGAAAGCTTTTACGGATCCAGCCACCACCACCACCACCACCACCACCACCACCACCACCCTCA
 TCAGTCTGTCAAAGGCAGGTGCCCGCCTCTACACTCGATTTACCACAATGTTAAAACACGAAAAGAGC
 CAGACACGAAAACACCGAGGAGCCAGAAAGCAAGAAATGGACCCTGGCCTTTCTAAACTTGCTTTTCTA
 GTCAGTCTGTGCCTTTCCGGAGGAAAAAAATTCGGCTCCTAAGAAAACAGACTGAAAAGGCAAAAATGTA
 AAGCATCTGTGTTTGGGCTCTGGACTCTGCCCTTAAAGACATCTGTGACCAAATTAAGCTGAAAAAGAA
 AAGGGGGAGCTTGCCGGACAACAGCATCTGCACCGCCTCATCAGTGAGCTGCTGCCAGATGTTCCCGAG
 AGGAACTCATCCCTGAGAGCGCTGAGGAGGAGCCCCCTGCACCAGCCTCTCCACCCTGCTCCCGATG
 GTGCTATTATTGTCACCTACCAGAATGACTGCGGGAGAATGCCCGCAGTGCCTCTTCCAAGACGT
 GGACACAGCCAACAGCAGCTGCCACCACCAAGACCGTGGCGGTGACTCCAAGACCGTGAGTCCCCTAGA
 AGTTACTCATCCACTTTGACTGACATGGGGAGAAGTGCACCAAGGGAAAGAGAGAACTCCAGAAAAAG
 AGAAATTGCCTGCAAAAGCTGTTTATGATTTTAAAGGCTCAGACATCTAAGGAGTTGTCATTTAAGAAAGG
 AGATACTGTCTACATCCTCAGGAAAATTGATCAAAATTTGGTATGAGGGAGAACACCACGGGAGAGTGGGC
 ATCTTCCCGATCTCATACGTAGAGAAACTCACACCTCCTGAGAAAACACAGCCTGCAAGACCACCTCCGC
 CAGCCCAGCCCGGAGAAATCGGAGAAGCTATAGCCAAATACAACCTCAACGCAGACACAAATGTGGAGCT
 GTCAGTGAAGGGAGATAGAGTTATTTCTTAAAAGAGTTGATCAAACTGGTATGAAGGTAATCAATC
 CCAGAACCAACAGACAAGGCATCTTCCCTGTTTCTTAAAGAGTTGATCAAACTGGTATGAAGGTAATCA
 CTGAGGACTACCCTGACCTCCAATACCCACAGCTATTCTAGTGATAGGATTCACAGCTTGAGCTCAAA
 TAAGCCACAGCGCTCTGTGTTTACTCATGAAAATATTCAAGGTGGGGGGGAACCGTTTCAGGCTCTGTAT
 AACTATACTCCCAGGAATGAAGATGAGCTGAGGACTCAGAGAAAAGTATGTCATTGATGTCATGAAAAGT
 GTGATGACGGCTGGTTTGTGGGGACCTCAAGAAGAACCAATTCTTTGTTACTTTCCCGGAAACTACGT
 CAAGAGGCTG

ACGCGTACGCGGCCGCTCGAGCAGAAACTCATCTCAGAAGAGGATCTGGCAGCAATGATATCCTGGATT
 ACAAGGATGACGACGATAAGGTTTAA

Protein Sequence:

>RC221118 representing NM_021069
 Red=Cloning site Green=Tags(s)

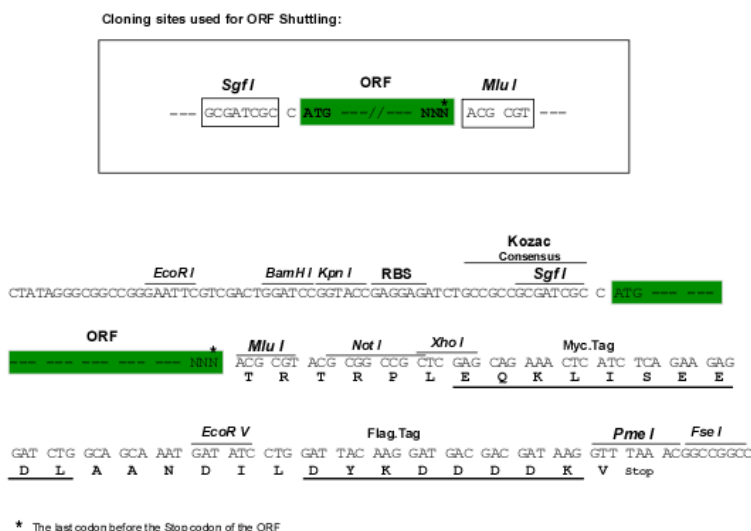
MSYYQRPFSAYSYPASLNSSIVMQHGTSLDSTDTYPQHAQSLDGTSSSIPLYRSSEEEKRVTVIKAP
 HYPGIGPVDESGIPTAIRTTVDRPKDWYKTMFKQIHMVHKPDDDDMYNTPYTYNAGLYNPPYSAQSHPA
 AKTQTYRPLSKSHSDNSPNAFKDASSPVPPPHVPPVPLRPRDRSSTEKHDWDPDRKVDTRKFRSEPR
 SIFEYEPGKSSILQHERPASLYQSSIDRSLERPMSASMASDFRKRKSEPAVGPPRGLGDQSASRTSPG
 RVDLPGSSTTLTKSFTSSSPSSPRAKGGDDSKICPSLCSYSGLNGNPSELDYCSTYRQHLDVPRDSPR
 AIFSFKNGWQMARQNAEIWSSTEETVSPKIKSRSCDDLNDDCDSFDPKVKSESMGSLLEEDSKESCPM
 AWGSPYVEVRSNGRSRIRHRSARNAPGFLKMYKMHRIHRKDLMNSEVICSVKSRIHQYSEEQHKDLL
 RAWSQCSTEIVPRDMVPTRISEFEKLIQKSKSMPNLGDDMLSPVTLEPPQNLCPKRRFSIEYLLEENQ
 SGPPARGRRGCQSNALVPIHIEVTSDEQPRAHVEFSDSDQDGVSDHSDYIHLEGGSSFCSEDFDHFST
 SSESFYGSSHHHHHHHHHHHRLISSCKGRCPASYTRFTTMLKHERARHENTEPRRQEMDPLSKLAF
 VSPVFFRRKNSAPKKQTEKAKCKASVFEALDSALKDIDQIKAEKKRGLPDNSILHRLISELLPDVPE
 RNSSLRALRRSPLHQPLHPLPPDGAIHCPYQNDGMRMPSASFQDVTANSSCHHQDRGGALQDRESR
 SYSSTLDMGRSAPRERRGTPEKEKLPKAVYDFKAQTSKELSFKKGDTVYILRKIDQNWYEGEHGRVG
 IFPISYVEKLTPEKAQPARPPPAQPGEIGEAIAKYNFNADTNVELSLRKGDRVILLKRVQDNWYEGKI
 PGTNRQGIFFVSYVEVVKNTKGAEDYDPPPIPHSYSSDRIHSLSSNKQRPVFTHENIQGGGEPFQALY
 NYTPRNEDELELRESVDIVMEKDDGWFVGTSRRTKFFGTFFPGNYVKRL

TRTRPLEQKLISEEDLAANDILDYKDDDDKV

Chromatograms: https://cdn.origene.com/chromatograms/mg3248_h01.zip

Restriction Sites: SgfI-MluI

Cloning Scheme:



ACCN: NM_021069

ORF Size: 3300 bp

OTI Disclaimer: The molecular sequence of this clone aligns with the gene accession number as a point of reference only. However, individual transcript sequences of the same gene can differ through naturally occurring variations (e.g. polymorphisms), each with its own valid existence. This clone is substantially in agreement with the reference, but a complete review of all prevailing variants is recommended prior to use. [More info](#)

OTI Annotation: This clone was engineered to express the complete ORF with an expression tag. Expression varies depending on the nature of the gene.

Components: The ORF clone is ion-exchange column purified and shipped in a 2D barcoded Matrix tube containing 10ug of transfection-ready, dried plasmid DNA (reconstitute with 100 ul of water).

Reconstitution Method:

1. Centrifuge at 5,000xg for 5min.
2. Carefully open the tube and add 100ul of sterile water to dissolve the DNA.
3. Close the tube and incubate for 10 minutes at room temperature.
4. Briefly vortex the tube and then do a quick spin (less than 5000xg) to concentrate the liquid at the bottom.
5. Store the suspended plasmid at -20°C. The DNA is stable for at least one year from date of shipping when stored at -20°C.

RefSeq: [NM_021069.5](#)

RefSeq Size: 4435 bp

RefSeq ORF: 3303 bp

Locus ID: 8470

UniProt ID: [O94875](#)

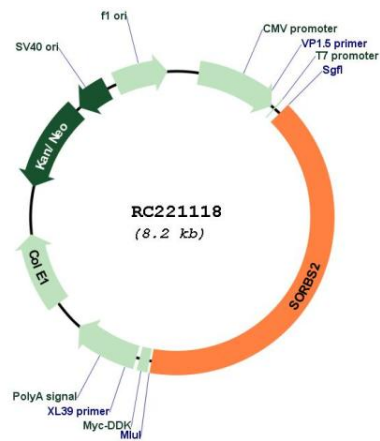
Cytogenetics: 4q35.1

Domains: SH3, Sorb

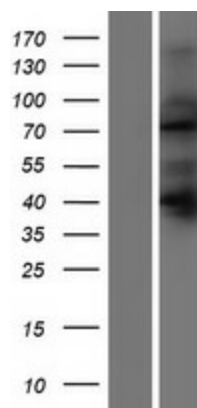
MW: 123.9 kDa

Gene Summary: Arg and c-Abl represent the mammalian members of the Abelson family of non-receptor protein-tyrosine kinases. They interact with the Arg/Abl binding proteins via the SH3 domains present in the carboxy end of the latter group of proteins. This gene encodes the sorbin and SH3 domain containing 2 protein. It has three C-terminal SH3 domains and an N-terminal sorbin homology (SoHo) domain that interacts with lipid raft proteins. The subcellular localization of this protein in epithelial and cardiac muscle cells suggests that it functions as an adapter protein to assemble signaling complexes in stress fibers, and that it is a potential link between Abl family kinases and the actin cytoskeleton. Alternative splicing results in multiple transcript variants encoding different isoforms. [provided by RefSeq, Jul 2008]

Product images:



Circular map for RC221118



Western blot validation of overexpression lysate (Cat# [LY412103]) using anti-DDK antibody (Cat# [TA50011-100]). Left: Cell lysates from untransfected HEK293T cells; Right: Cell lysates from HEK293T cells transfected with RC221118 using transfection reagent MegaTran 2.0 (Cat# [TT210002]).