

## Product datasheet for **RC221110**

### beta TRCP2 (FBXW11) (NM\_033645) Human Tagged ORF Clone

#### Product data:

Product Type:	Expression Plasmids
Product Name:	beta TRCP2 (FBXW11) (NM_033645) Human Tagged ORF Clone
Tag:	Myc-DDK
Symbol:	beta TRCP2
Synonyms:	BTRC2; BTRCP2; FBW1B; Fbw11; FBXW1B; Hos; NEDJED
Mammalian Cell Selection:	Neomycin
Vector:	pCMV6-Entry (PS100001)
E. coli Selection:	Kanamycin (25 ug/mL)



[View online »](#)

**ORF Nucleotide Sequence:**

>RC221110 representing NM\_033645  
 Red=Cloning site Blue=ORF Green=Tags(s)

TTTTGTAATACGACTCACTATAGGGCGGCCGGAATTCGTCGACTGGATCCGGTACCGAGGAGATCTGCC  
 GCC**CGCATCGCC**

ATGGAGCCCGACTCGGTGATTGAGGACAAGACCATCGAGCTCATGATAAGTAATGGAACATCATCTGTGA  
 TCGTCTCCAGAAAGAGGCCATCAGAAGGAACTATCAAAAAGAAAAGACTTGTGTATTAATATTTTGA  
 CCAGTGGTCTGAATCAGATCAAGTGGAATTTGTGGAACATCTTATTTACGAATGTGTCATTATCAGCAT  
 GGACATATTAACCTTACCTGAAGCCCATGTTGCAGCGGGACTTTATTACCGCTTACCAGAGCAAGGCT  
 TAGATCACATAGCAGAAAACATTCTTTCTGACCTGGATGCCAGGTCTCTGTGTCAGCAGAGCTGGTATG  
 TAAAGAATGCGAGCGAGTGATCTCAGAAGGAATGCTTTGGAAGAAGCTGATTGAACGAATGGTACGCACT  
 GATCCCCTATGGAAGGACTTTCAGAAAAGAAGAGGGTGGGATCAGTACCTGTTTAAAAACAGACCCACAG  
 ATGGCCCTCCAAATTCATTTTATAGGTCATTATACCCAAAGATTATCCAGGATATAGAGACTATAGAATC  
 TAACTGGCGGTGTGGACGACACAACCTTGCAGAGGATTCAGTGCCGCTCTGAAAATAGTAAAGGTGTCTAC  
 TGTTTACAGTACGATGATGAAAAAATTATCAGTGGCCTACGAGATAATTCTATTAAGATATGGGATAAAA  
 CCAGCCTGGAATGTTTGAAGTGTAAACAGGACACACAGGCTCTGTCTCTGTCTGCAGTATGATGAGCG  
 TGTCAATTGTAACCTGCTTTCAGATTCTACGGTGAAGTGTGGGATGTGAACACGGGTGAAGTTCTTAAC  
 ACATTGATCCACCACAATGAGGCTGATTGCACTTACGCTTACGCAATGGACTGATGGTACCTGTTCCA  
 AGGACCGCTCCATTGCTGTGTGGGACATGGCTTCTGCGACCGACATCACTTTACGCCGTGCTCGTTGG  
 CCACCGGGCTGCCGTCAATGTAGTAGACTTTGACGACAAGTACATCGTGTCTGCCTCTGGTGACAGGACC  
 ATCAAAGTCTGGAGCACGACACCTGTGAATTTGTTCTGACTCTCAATGGGCACAAGCGGGGCATTGCCT  
 GTCTCCAGTACAGGGATCGCCTGGTTGTTAGTGGATCATCAGATAATACCATTAGGCTCTGGGATTTGA  
 ATGTGGTGCCTGTTTAAAGAGTCTAGAGGGACATGAAGAATTGGTCCGATGCATCCGGTTTGATAACAAG  
 AGGATTGTCAGTGGGCTTATGATGGGAAAATTAAGTTTGGGACTTGAAGCTGCTCTTGACCCTCGAG  
 CCCCAGCAAGCACATTGTGTTTGCACACATTGGTGAACATTCTGGACGTGTGTTTCCGGCTCCAGTTTGA  
 TGAGTTTTCAGATCATCAGCAGCTCCCATGATGACACTATTTTGAATTTGGGATTTCTTAAATGTGCCTCCC  
 AGTGCCCAAGATGAGACCCGTTCTCCCTCCAGAACATACACTTACATCTCTAGA

**ACGCGT**ACGCGGCCGCTCGAGCAGAACTCATCTCAGAAGAGGATCTGGCAGCAATGATATCCTGGATT  
 ACAAGGATGACGACGATAAGGTTTAA

**Protein Sequence:**

>RC221110 representing NM\_033645  
 Red=Cloning site Green=Tags(s)

MEPDSVIEDKTIELMISNGTSSVIVSRKRPSEGNVQKEKDLCKYFDQWSESDQVEFVEHLISRMCHYQH  
 GHINSYLKPMQLQRDFITALPEQGLDHAENILSYLDARSLCAAELVCKEWQRVISEGMLWKLIERMVRT  
 DPLWKGLSERRGWDQYLFKNRPTDGPPNSFYRSLYPKIIQDIETIESNWRGRHNLQRIQCRSENSKGVY  
 CLQYDDEKIIISGLRDNSIKIWDKTSLECLKVLTGHTGSVLCLQYDERVIVTGSSDSTVRVWVNTGEVLN  
 TLIHNEAVLHLRFNGLMVTCSKDRSIAVWDMASATDITLRRVLVGHRAAVNVVDFDDKYIVSASGDR  
 IKVWSTSTCEFVRTLNHGKRGIAQLQYRDRLVVSAGSSDNTIRLWDIECGACLRVLEGEELVRCIRFDNK  
 RIVSGAYDGKIKVWDLQAALDPRAPASTLCLRTLVEHSGRVFRLQFDEFQIISSSHDDTILIWDFLNVPP  
 SAQNETRSPSRTYTISR

**TRTRPLEQKLI**SEEDLAANDILDYKDDDDKV

**Chromatograms:**

[https://cdn.origene.com/chromatograms/mg2876\\_e09.zip](https://cdn.origene.com/chromatograms/mg2876_e09.zip)

**Restriction Sites:**

SgfI-MluI

**Cloning Scheme:**


**ACCN:** NM\_033645

**ORF Size:** 1524 bp

**OTI Disclaimer:** The molecular sequence of this clone aligns with the gene accession number as a point of reference only. However, individual transcript sequences of the same gene can differ through naturally occurring variations (e.g. polymorphisms), each with its own valid existence. This clone is substantially in agreement with the reference, but a complete review of all prevailing variants is recommended prior to use. [More info](#)

**OTI Annotation:** This clone was engineered to express the complete ORF with an expression tag. Expression varies depending on the nature of the gene.

**Components:** The ORF clone is ion-exchange column purified and shipped in a 2D barcoded Matrix tube containing 10ug of transfection-ready, dried plasmid DNA (reconstitute with 100 ul of water).

- Reconstitution Method:**
1. Centrifuge at 5,000xg for 5min.
  2. Carefully open the tube and add 100ul of sterile water to dissolve the DNA.
  3. Close the tube and incubate for 10 minutes at room temperature.
  4. Briefly vortex the tube and then do a quick spin (less than 5000xg) to concentrate the liquid at the bottom.
  5. Store the suspended plasmid at -20°C. The DNA is stable for at least one year from date of shipping when stored at -20°C.

**RefSeq:** [NM\\_033645.3](#)

**RefSeq Size:** 4473 bp

**RefSeq ORF:** 1527 bp

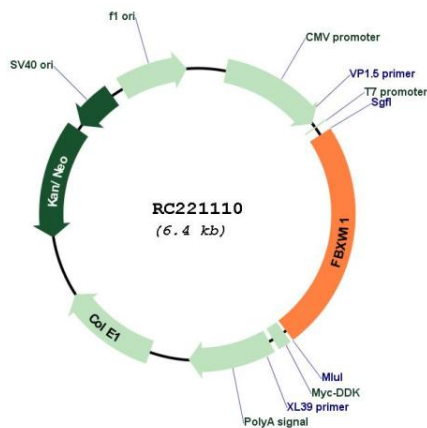
**Locus ID:** 23291

**UniProt ID:** [Q9UKB1](#)

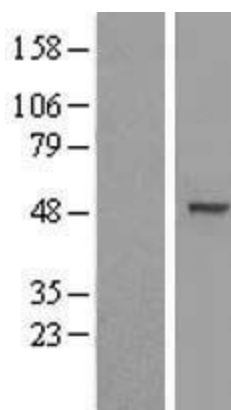
**Cytogenetics:** 5q35.1

<b>Domains:</b>	WD40, F-box
<b>Protein Families:</b>	Druggable Genome
<b>Protein Pathways:</b>	Hedgehog signaling pathway, Oocyte meiosis, Ubiquitin mediated proteolysis, Wnt signaling pathway
<b>MW:</b>	58.2 kDa
<b>Gene Summary:</b>	This gene encodes a member of the F-box protein family which is characterized by an approximately 40 amino acid motif, the F-box. The F-box proteins constitute one of the four subunits of ubiquitin protein ligase complex called SCFs (SKP1-cullin-F-box), which function in phosphorylation-dependent ubiquitination. The F-box proteins are divided into 3 classes: Fbws containing WD-40 domains, Fbls containing leucine-rich repeats, and Fbxs containing either different protein-protein interaction modules or no recognizable motifs. The protein encoded by this gene belongs to the Fbws class and, in addition to an F-box, contains multiple WD40 repeats. This gene contains at least 14 exons, and its alternative splicing generates 3 transcript variants diverging at the presence/absence of two alternate exons. [provided by RefSeq, Jul 2008]

**Product images:**



Circular map for RC221110



Western blot validation of overexpression lysate (Cat# [LY409481]) using anti-DDK antibody (Cat# [TA50011-100]). Left: Cell lysates from untransfected HEK293T cells; Right: Cell lysates from HEK293T cells transfected with RC221110 using transfection reagent MegaTran 2.0 (Cat# [TT210002]).