

Product datasheet for **RC221105**

ZDHHC15 (NM_144969) Human Tagged ORF Clone

Product data:

Product Type:	Expression Plasmids
Product Name:	ZDHHC15 (NM_144969) Human Tagged ORF Clone
Tag:	Myc-DDK
Symbol:	ZDHHC15
Synonyms:	DHHC15; MRX91
Mammalian Cell Selection:	Neomycin
Vector:	pCMV6-Entry (PS100001)
E. coli Selection:	Kanamycin (25 ug/mL)
ORF Nucleotide Sequence:	>RC221105 representing NM_144969 Red=Cloning site Blue=ORF Green=Tags(s)

TTTTGTAATACGACTCACTATAGGGCGCCGGGAATTCGTCGACTGGATCCGGTACCGAGGAGATCTGCC
GCC**CGATCGCC**

ATGCGCGAGGCTGGAAGATGGCTCTGTCTGGGGGCTGCGGTGCTGCCCGGGTACTGTCCTGGGTGC
CAGTGCTCGTTATTGTCCTCGTCGTCTGGTCTACTATGCCTACGCTTTGAACTCTGCCTGGTGAC
TGTTTTGAGCCCAGCAGAAAAAGTTATTTACCTCATACTCTACCATGCCATCTTTGTGTTCTTTACCTGG
ACCTACTGGAAGTCTATCTTTACACTCCCACAGCAGCCAAACCAGAAGTCCACTTGTCTACACAGACA
AGGAGCGCTATGAAAATGAAGAAAGACCTGAGGTCCAGAAGCAGATGCTTGTGATATGGCCAAAAGCT
ACCGGTTTACACAAGAACTGGAAGTGGAGCTGTACGATTCTGTGACCGGTGTCATCTGATCAAGCCAGAC
CGCTGCCACCACTGCTCTGTCTGTGCTATGTGTGTGTTAAAAATGGATCATCACTGCCCTTGGGTTAATA
ACTGCATTGGATTTTCCAACACAAATCTTCTTCAATCTTAGCTTACTCTGTCTCTACTGCCTGTA
CATTGCTACGACAGTCTTCAGCTATTTCAATACTGGAGAGGGGAATTACCCAGTGTTCGCTCTAAG
TTCCATGTCTTTTTCTTCTCTTTGTGGCTGCATGTTTTTTGTCAGCCTTGATCTCTTTGGTTACC
ATTGTTGGCTTGTGAGCAGAAACAAACACCTTAGAGCCTTCTGCACTCCAGTGTTCACAAGTGGCC
AGAGAAAAATGGTTCAACCTTGGCTTCATCAAGAATATCCAGCAGGTGTTGGAGATAAGAAGAAGTTC
TGGTTAATACCTATTGGTTCAGCCCTGGTATGGACACTCCTCCCTATGAGTCTATGAATGAGTCAC
AGAACCCACTGTAGCAATGAAGAAACCTGGGAAGACAACGAGGATGACAACCAAGATTATCCAGAAGG
CTCATCTCTTGTGTGGAACGGAACA

ACGCGTACGCGGCCGCTCGAGCAGAACTCATCTCAGAAGAGGATCTGGCAGCAATGATATCCTGGATT
ACAAGGATGACGACGATAAGGTTTAA



[View online »](#)

Protein Sequence: >RC221105 representing NM_144969
Red=Cloning site Green=Tags(s)

MRRGWKMALSGGLRCCRRVL SWVPVLVIVLVVLSYAYVFELCLVTVLSPA EKVIYLILYHAIFVFFTW
 TYWKSIF TLPQQPNQK FHL SYTDKERYENEERPEVQKMLVDM AKKLPVYTRTSGS GAVRFCDRCHLIKPD
 RCHHCSVCAMCVLKMDHHC PWVNNCIGFSNYKFFLQFLAYSVL YCLYIATTVFSYFIKYWRGELPSVRSK
 FHVLFLLFVACMFFVSLVILFGYHCWLVSRNKTTLEAFCTPVFTSGPEKNGFN LGFIKNIQQVFGDKKKF
 WLIPIGSSPGDGHSPMRS MNESQNPLLANEETWEDNEDDNQDYPEGSSSLAVETET

TRTRPLEQKLISEEDLAANDILDYKDDDDKV

Restriction Sites: SgfI-MluI

Cloning Scheme:

Cloning sites used for ORF Shuttling:



* The last codon before the Stop codon of the ORF

ACCN: NM_144969

ORF Size: 1011 bp

OTI Disclaimer: The molecular sequence of this clone aligns with the gene accession number as a point of reference only. However, individual transcript sequences of the same gene can differ through naturally occurring variations (e.g. polymorphisms), each with its own valid existence. This clone is substantially in agreement with the reference, but a complete review of all prevailing variants is recommended prior to use. [More info](#)

OTI Annotation: This clone was engineered to express the complete ORF with an expression tag. Expression varies depending on the nature of the gene.

Components: The ORF clone is ion-exchange column purified and shipped in a 2D barcoded Matrix tube containing 10ug of transfection-ready, dried plasmid DNA (reconstitute with 100 ul of water).

Reconstitution Method:

1. Centrifuge at 5,000xg for 5min.
2. Carefully open the tube and add 100ul of sterile water to dissolve the DNA.
3. Close the tube and incubate for 10 minutes at room temperature.
4. Briefly vortex the tube and then do a quick spin (less than 5000xg) to concentrate the liquid at the bottom.
5. Store the suspended plasmid at -20°C. The DNA is stable for at least one year from date of shipping when stored at -20°C.

RefSeq: [NM_144969.3](#)

RefSeq Size: 1782 bp

RefSeq ORF: 1014 bp

Locus ID: 158866

UniProt ID: [Q96MV8](#)

Cytogenetics: Xq13.3

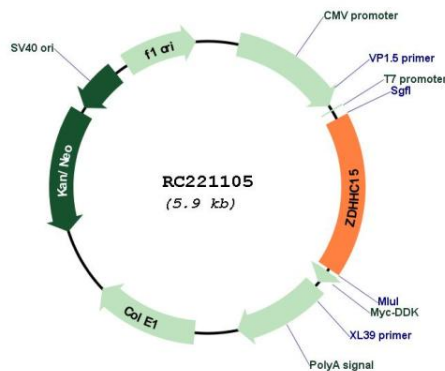
Domains: zf-DHHC

Protein Families: Transmembrane

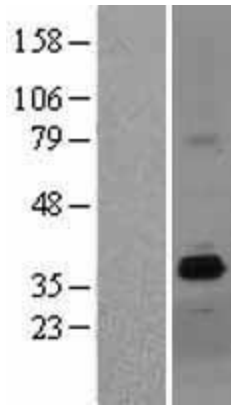
MW: 39.2 kDa

Gene Summary: The protein encoded by this gene belongs to the DHHC palmitoyltransferase family. Mutations in this gene are associated with mental retardatio X-linked type 91 (MRX91). Alternatively spliced transcript variants encoding different isoforms have been found for this gene. [provided by RefSeq, Sep 2009]

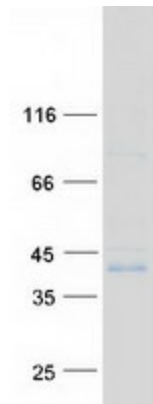
Product images:



Circular map for RC221105



Western blot validation of overexpression lysate (Cat# [LY403407]) using anti-DDK antibody (Cat# [TA50011-100]). Left: Cell lysates from untransfected HEK293T cells; Right: Cell lysates from HEK293T cells transfected with RC221105 using transfection reagent MegaTran 2.0 (Cat# [TT210002]).



Coomassie blue staining of purified ZDHHC15 protein (Cat# [TP321105]). The protein was produced from HEK293T cells transfected with ZDHHC15 cDNA clone (Cat# RC221105) using MegaTran 2.0 (Cat# [TT210002]).