

## Product datasheet for RC221099

### LIMCH1 (NM\_014988) Human Tagged ORF Clone

#### Product data:

Product Type:	Expression Plasmids
Product Name:	LIMCH1 (NM_014988) Human Tagged ORF Clone
Tag:	Myc-DDK
Symbol:	LIMCH1
Synonyms:	LIMCH1A; LMO7B
Mammalian Cell Selection:	Neomycin
Vector:	pCMV6-Entry (PS100001)
E. coli Selection:	Kanamycin (25 ug/mL)
ORF Nucleotide Sequence:	>RC221099 representing NM_014988 Red=Cloning site Blue=ORF Green=Tags(s)

TTTTGTAATACGACTCACTATAGGGCGGCCGGAATTCGTCGACTGGATCCGGTACCGAGGAGATCTGCC  
GCC**CGATCGCC**

ATGGCTTGTCCCCTCTCGGTCTGGAAGCTCTTCAGCCCCTGCAGCCCGAGCCGCCCCCGAGCCCGCT  
TCTCCGAGGCGCAGAAGTGGATTGAGCAAGTAAGTGCAGAAAGTTTGGTGATAAAGATTTTCGGACAGG  
TTTAGAAAATGGAATCCTCCTCTGCGAGTTGCTGAATGCTATAAAGCCAGGACTTGTTAAAAAGATCAAT  
AGATTGCCTACCCCATTCGAGGACTGGACAATATTATCTTATTCTTGAGAGGTTGTAAGAGCTCGGCC  
TTAAAGAATCTCAACTTTTTGACCCGAGTGACCTCCAGGATACATCCAACAGAGTAACAGTCAAGAGCCT  
TGATTATAGTAGGAAGCTGAAAAATGTATTAGTTACCATTACTGGCTGGGAAAAGCAGCAACAGCTGC  
ACATCCTACAGCGGAACGACACTAAACCTGAAGGAGTTTGAAGGATTGTTGGCTCAGATCGAAAAGGACA  
CTGATGACATTGAAAGTCTAAACGCAGTATCCGAGACAGTGGCTACATCGACTGCTGGGATTCCGAGCG  
CAGCGACTCCCTCTCCTCCTCGCCACGGCAGAGATGATTCTTCGACAGCCTGGATTCTTTGGCTCT  
CGCTCTCGGCAGACGCCTTACCAGATGTAGTCTCAGGGGAAGCAGCGATGGGAGAGGAAGCGACTCTG  
AATCCGACTTGCCTCATCGGAAGCTGCCAGATGTGAAGAAGGATGACATGTCTGCACGGCGGACTTCCCA  
TGGTGAGCCGAAATCAGCAGTGCCTTTAAACAGTACCTCCCGAACAAAAGCAATCAGACGGCCTACGTC  
CCCAGCCTCTGAGAAAGAAGAAAGCAGAGAGAGAGGAATACCGCAAGAGCTGGAGTACCGCCACCTCCC  
CGCTGGGTGGGGAGAGGCCCTTACGATACGGTCCGAGAAGTCTGTGTCTGATGACGAGAGAGACCCAG  
CATGTTTGACATGCGGTGTGAGGAGGAGGCCGCGTGCAGCCGCACAGCAGGGCCCGCCAGGAGCAGCTG  
CAGCTGATAAATAACAGCTGAGGGAAGAGGACGACAAATGGCAAGATGACCTGGCTCGTTGGAAGAGTC  
GTAGAAGAAGTGTCTCAGGACTTAATCAAGAAAGAGGAAGAAAGGAAAAAATGGAGAAGTTACTGGC  
TGGAGAAGATGGGACAAGTGAACGAAGGAAAAGCATCAAAACCTACAGAGAAATTGTTCAAGAAAAAGAG  
CGGAGAGAGAGAGCTGCATGAAGCATATAAAGAACGCTCGTCCAGGAGGAGGAGGAGGGGATCTTTC  
AACAGTACATTGAGAGGTTACCATCAGTGAGGCTGTTCTCGAACGCTTGGAGATGCCAAAAATTCTGGA  
AAGAAGCCATTCAACAGAGCCAAATTTATCCTCCTTCTGAATGACCCCAATCCCATGAAATACCTGCGG



CAACAGTCACTGCCTCCACCCAAATTCCTGCCACTGTTGAAACCACCATTGCTCGTGCCAGTGTCTGG  
 ATACCAGCATGTGAGCAGGAGTGGGTCTCCAAGCAAACTGTCCTCCAAAGCAGTGCCTATGCTGAC  
 ACCCAAGCCTTACTCCCAGCCAAAAATTCCTCAAGATGTTCTGAAGACCTTTAAGGTAGACGGGAAAGTC  
 AGTGTGAATGGAGAGACGGTTCATAGAGAGGAGGAGAAGGAAAGAGAGTGTCCCACGGTGGCACCTGCC  
 ACTCCTTAACCAATCCCAGATGTTTGAAGGTGTGGCCAGAGTGCACGGGTCTCCACTGGAGCTGAAACA  
 AGACAACGGTAGCATCGAGATCAACATAAAGAAGCCAACTCTGTTCCCCAAGAGCTCGCAGCAACAGTA  
 GAGAAAACGGAACCGAATAGTCAAGAGGACAAGAATGATGGTGGAAAAATCAAGAAAAGGGAATATAGAAC  
 TTGCCTCATCAGAACCACAGCATTTCACAACAACCTGTGACTCGATGCAGCCCGACCGTGGCCTTTGTGGA  
 ATTTCCCTCCAGCCCCAGCTGAAGAATGATGTGTGCGAAGAAAAAGACCAGAAGAAACCAGAAAATGAA  
 ATGAGTGGAAAGGTGGAGTTGGTGTGTGACAAAAGGTGGTAAAGCCAAAATCTCCAGAACCAGAAAGCAA  
 CGCTGACATTTCCATTTCTGGACAAAATGCCTGAAGCCAACTACATTTGCCAAATCTCAATTTCTCA  
 AGTGGATTCTCCAAGCAGTGAAGTACCTGTTACGACACCTCAGTTTAAAGTTCTGGGCATGGGACCCA  
 GAAGAGGAGCGCAGGCGACAGGAAAAATGGCAACAGGAACAGGAACGTTTGTCCAGGAGAGATACCAGA  
 AGGAGCAGGACAAGCTGAAAGAAGAGTGGGAAAAGGCCAAAAGGAGGTGAAGAGGAAGAACGCAGATA  
 CTATGAGGAGGAGCGTAAGATAATTGAAGACACTGTGGTTCATTTACTGTTTCTCAAGTTCGGCTGAC  
 CAGCTGTCTACCTCTTCCATGACTGAAGGCAGTGGGACAATGAATAAGATAGACCTGGGAAACTGTC  
 AAGATGAAAAACAAGACAGAAGATGGAAGAAATCATTCCAGGGAGATGACAGTGACTTATTGCTGAAGAC  
 TAGGGAAGTGTGACTGGAGGAGAAGGGCAGCCTAACTGAAGGGGCTTGGCTCATTCTGGGAACCTT  
 GTATCAAAGGAGTCCATGAAGACCATCAGCTGGATACCGAGGCTGGGGCCCACTGTGGAACAAACC  
 CACAGCTTGTCCAGGATCCATCCAGAATCAGCAGACATCAAATCCAACGCACAGTTCAGAAGATGTGAA  
 GCCAAAACCTCCCGCTGGATAAAAGCATTAAACCATCAGATCGAGTCTCCAGTGAAGGCGGAAGAAA  
 AGTCCCGAGAGCACTTCCAGGCTGGGCTTTCTCTCCCTGTTCTCCACCCCTCCCGGTCAGTACCCAA  
 ACAGGTCTATAAGTGGAAAGAAGCTGTGCTCTTCTGTTGGGCTTCTTTGGTAAAGGAGTGAATGAT  
 CATCGAGACCCTCAATCTCTATTTTACATCCAGTGTTCAGGTGTGGAATTTGTAAGGCCAGCTTGGGA  
 GATGCAAGTGGGACGGATGTTAGGATTCGAAATGGTCTCCTGAACTGTAATGATTGCTACATGCGAT  
 CCAGAAGTGCCGGGACGCTACAACATTG

ACGCGTACGCGGCCGCTCGAGCAGAACTCATCTCAGAAGAGGATCTGGCAGCAATGATATCCTGGATT  
 ACAAGGATGACGACGATAAGGTTTAA

**Protein Sequence:**

>RC221099 representing NM\_014988  
 Red=Cloning site Green=Tags(s)

MACPALGLEALQPLQPEPPPEPAFSEAQKWIEQVTRSFQDKDFRTGLENGILLCELLNAIKPGLVKKIN  
 RLPTPIAGLDNIILFLRGCKELGLKESQLFDPSDLQDTSNRVTVKSLDYSRKLKNVLTIIYWLGAANS  
 TSYSGTTNLKEFEGLLAQMRKDTDDIESPKRSIRDSGYIDCWDSERSDSLSPRRHRDSDSDFSGS  
 RSRQTPSPDVLVLRGSSDGRGSDSESDLPHRKLDPVKKDDMSARRTSHGEPKSAVFPNQYLPNKSQTAYV  
 PAMPLRKKKAEREEYRKSWSSTATSPLGGERPFRYPRTVPVSDDAESTSMFDMRCEEEAAVQPHSRARQEQ  
 QLINNQLREEDDKWQDDLARWKSRRRSVSQDLIKKEEERKKMEKLLAGEDGTSERRKSIKTYREIVQEKE  
 RRERELHEAYKNARSQEEAEGILQQYIERFTISEAVLERLEMPKILERSHSTEPNLSSFLNDPNPMKYLR  
 QQSLPPPFTATVETIARASVLDTSMSAGSGSPKTVTPKAVPMLTPKPYSPKNSQDVLKTFKVDGKV  
 SVNGETVHREEEKERECPVAPAHSLTKSQMFEGVARVHGSPLKQDNGSIEINIKKPNVSPQELAATT  
 EKTEPNSQEDKNDGGKSRKGNIELASSEPHFTTTVTRCSPTVAFVEFPSSPQLKNDVSEEKQKPKENE  
 MSGKVELVLSQKVVPKSPPEATLTFPFLDKMPEANQLHLPNLNSQVDSPSSEKSPVTPQFKFWAWDP  
 EEERRRQEKWQEQERLLQERYQKEQDKLKEEWEKAQKEVEEERRRYEEERKIIEDTVVPFTVSSSSAD  
 QLSTSSSMTEGSGTMNKIDLGNQCDEKQDRRWKKSFGQDSDLLKKTRESDRLEEKGLTEGALAHSGNP  
 VSKGVHEDHQLDTEAGAPHCNPNQLAQDPSQNTSNPHTSSEDEVKPKTLPLDKSINHQIESPSERRKK  
 SPREHFQAGPFPSPPTPPGQSPNRSISGKKLCSGCLPLGKGAAMIETLNLVYFHIQCFCRIGICKQLG  
 DAVSGTDVIRNGLLNCNDCYMRSRSAGQPTTL

TRTRPLEQKLISEEDLAANDILDYKDDDDKV

**Chromatograms:**

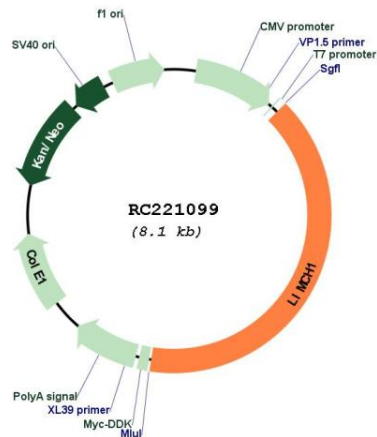
[https://cdn.origene.com/chromatograms/mk8043\\_a01.zip](https://cdn.origene.com/chromatograms/mk8043_a01.zip)



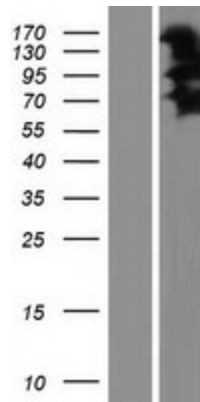
UniProt ID: [Q9UPQ0](#)  
 Cytogenetics: 4p13  
 MW: 121.7 kDa

**Gene Summary:** Actin stress fibers-associated protein that activates non-muscle myosin IIa. Activates the non-muscle myosin IIa complex by promoting the phosphorylation of its regulatory subunit MRLC/MYL9. Through the activation of non-muscle myosin IIa, positively regulates actin stress fibers assembly and stabilizes focal adhesions. It therefore negatively regulates cell spreading and cell migration.[UniProtKB/Swiss-Prot Function]

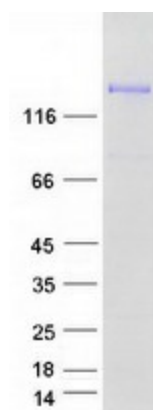
**Product images:**



Circular map for RC221099



Western blot validation of overexpression lysate (Cat# [LY414882]) using anti-DDK antibody (Cat# [TA50011-100]). Left: Cell lysates from untransfected HEK293T cells; Right: Cell lysates from HEK293T cells transfected with RC221099 using transfection reagent MegaTran 2.0 (Cat# [TT210002]).



Coomassie blue staining of purified LIMCH1 protein (Cat# [TP321099]). The protein was produced from HEK293T cells transfected with LIMCH1 cDNA clone (Cat# RC221099) using MegaTran 2.0 (Cat# [TT210002]).