

Product datasheet for RC221081

KRTAP10-11 (NM_198692) Human Tagged ORF Clone

Product data:

Product Type:	Expression Plasmids
Product Name:	KRTAP10-11 (NM_198692) Human Tagged ORF Clone
Tag:	Myc-DDK
Symbol:	KRTAP10-11
Synonyms:	KAP10.9; KAP10.11; KAP18-9; KAP18.11; KRTAP10-9; KRTAP10.9; KRTAP18-9; KRTAP18-11; KRTAP18.9; KRTAP18.11
Mammalian Cell Selection:	Neomycin
Vector:	pCMV6-Entry (PS100001)
E. coli Selection:	Kanamycin (25 ug/mL)
ORF Nucleotide Sequence:	>RC221081 ORF sequence Red=Cloning site Blue=ORF Green=Tags(s)

TTTTGTAATACGACTCACTATAGGGCGGCCGGAATTCGTCGACTGGATCCGGTACCGAGGAGATCTGCC
GCCGCGATCGCC

ATGGCCGCGTCCACCATGTCTGTCTGCTCCAGCGCTTACTCCGACTCCTGGCAGGTGGACGACTGCCAG
AGAGCTGCTGTGAGCCCCCTGCAGCGCCCCAGCTGCTGCGCCCCGCCCCCTCCCTGAGCCTGGTCTG
CACCCAGTGAGCTGTGTGCCAGCCCTGCTGCCAGGCGCCTGTGAGCCAGCGCCTGCCAATCAGGC
TGACCCAGCTCCTGCACGCCGTATGCTGCCAGCAGTCTAGCTGCCAGCCGGCTTGTGCACCTCCTCC
CCTGCCAGCAGGCTGCTGTGCTGCTGCTGCAAGACTGTCTGCTGCAAGCCTGTGTGCTGTGTGCC
TGCTGCTGTGGGCTGCTTCTTCGTGCTGCCGGCAGTCTAGCTGCCAGCCAGCTTGTGTGCTCTTCC
TCCTGCCAGCCGGCTGCTGTGTGCCGTCTGCTGCAAGCCTGTGTGCTGTGTGCCACCTGCTCTGAGG
ATTCTCTTCATGCTGCCAGCAGTCTAGCTGCCAGCCAGCTTGTGCACCTCCTCCTACCAGCAGGC
CTGCTGCGTGCCTGTCTGCTGCAAGACTGTCTACTGCAAGCCATCTGCTGTGTGCTGTCTGCTTAGG
GCTTCTCTTACGCTGCCAGCAGCCTAGCTGCCAGCCAGCTTGTGCACCACCTCCTGCTGCAGACCT
CCTCCTGTGTCCCTCCTGCCACCCCGTGTGACAGGTCCACCTGCTGTGTGCCGTCTCCTCTGCTG
TGCCCCACCTCCTCCTGCCAGTCCAGCTGCTGCTGCCGGCCTCCTGCGTGTCCCTCCTGCGCCCC
GCAAGTCCCCTGCGCTGCTACAGCCTCTGCTCAGGCAAGAAGTCCAGCTGC

ACGCGTACGCGGCCGCTCGAGCAGAACTCATCTCAGAAGAGGATCTGGCAGCAAATGATATCCTGGATT
ACAAGGATGACGACGATAAGGTTTAA



[View online »](#)

Protein Sequence: >RC221081 protein sequence
Red=Cloning site Green=Tags(s)

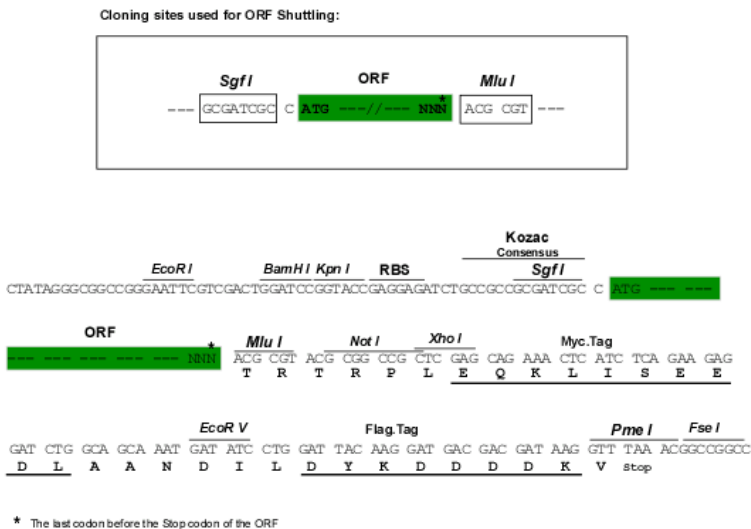
```
MAASTMSVCSSAYSDSWQVDDCPESCPEPPCSAPSCCAPAPSLSLVCTPVSCVSSPCCQAACEPSACQSG  
CTSSCTPSCCQSSCQPACCTSSPCQQACCVPVCKTVCKPVCCVPVCCGAASSCCRQSSCQPACASS  
SCQPACCVPVCKPVCCVSTCSESSSSCQSSCQPACCTSSSYQQACCVPVCKTVYCKPICCVPVCSR  
ASSSRCQPSCQPACCTSSCRPSSSVSLLCHPVCRSTCCVPVSSCCAPTSSCQSSCCCPASCVSLLCRP  
ASSRLACYSLCSGKKSSC
```

TRTRPLEQKLISEEDLAANDILDYKDDDDKV

Chromatograms: https://cdn.origene.com/chromatograms/mk6452_b05.zip

Restriction Sites: SgfI-MluI

Cloning Scheme:



ACCN: NM_198692

ORF Size: 894 bp

OTI Disclaimer: The molecular sequence of this clone aligns with the gene accession number as a point of reference only. However, individual transcript sequences of the same gene can differ through naturally occurring variations (e.g. polymorphisms), each with its own valid existence. This clone is substantially in agreement with the reference, but a complete review of all prevailing variants is recommended prior to use. [More info](#)

OTI Annotation: This clone was engineered to express the complete ORF with an expression tag. Expression varies depending on the nature of the gene.

Components: The ORF clone is ion-exchange column purified and shipped in a 2D barcoded Matrix tube containing 10ug of transfection-ready, dried plasmid DNA (reconstitute with 100 ul of water).

Reconstitution Method:

1. Centrifuge at 5,000xg for 5min.
2. Carefully open the tube and add 100ul of sterile water to dissolve the DNA.
3. Close the tube and incubate for 10 minutes at room temperature.
4. Briefly vortex the tube and then do a quick spin (less than 5000xg) to concentrate the liquid at the bottom.
5. Store the suspended plasmid at -20°C. The DNA is stable for at least one year from date of shipping when stored at -20°C.

RefSeq: [NM_198692.3](#)

RefSeq Size: 1249 bp

RefSeq ORF: 897 bp

Locus ID: 386678

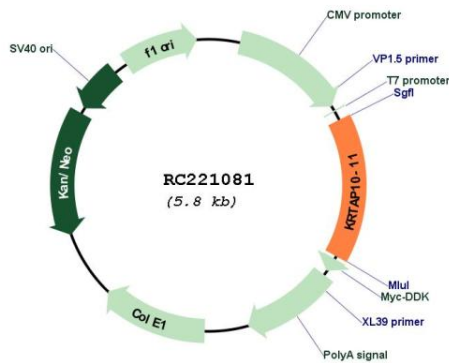
UniProt ID: [P60411](#)

Cytogenetics: 21q22.3

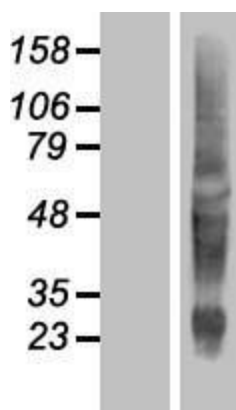
MW: 30.2 kDa

Gene Summary: In the hair cortex, hair keratin intermediate filaments are embedded in an interfilamentous matrix, consisting of hair keratin-associated proteins (KRTAP), which are essential for the formation of a rigid and resistant hair shaft through their extensive disulfide bond cross-linking with abundant cysteine residues of hair keratins. The matrix proteins include the high-sulfur and high-glycine-tyrosine keratins.[UniProtKB/Swiss-Prot Function]

Product images:



Circular map for RC221081



Western blot validation of overexpression lysate (Cat# [LY404811]) using anti-DDK antibody (Cat# [TA50011-100]). Left: Cell lysates from untransfected HEK293T cells; Right: Cell lysates from HEK293T cells transfected with RC221081 using transfection reagent MegaTran 2.0 (Cat# [TT210002]).