

Product datasheet for **RC221074**

ZSCAN1 (NM_182572) Human Tagged ORF Clone

Product data:

Product Type:	Expression Plasmids
Product Name:	ZSCAN1 (NM_182572) Human Tagged ORF Clone
Tag:	Myc-DDK
Symbol:	ZSCAN1
Synonyms:	MZF-1; ZNF915
Mammalian Cell Selection:	Neomycin
Vector:	pCMV6-Entry (PS100001)
E. coli Selection:	Kanamycin (25 ug/mL)
ORF Nucleotide Sequence:	>RC221074 representing NM_182572 Red=Cloning site Blue=ORF Green=Tags(s)

TTTTGTAATACGACTCACTATAGGGCGGCCGGAATTCGTCGACTGGATCCGGTACCGAGGAGATCTGCC
GCC**CGATCGCC**

ATGCTTCCACGGCCAAAGCCCCCTGCCTCCCCAGACGCCCCAGACCCCAACCCGAGTGAGCAGGACG
CAGACCTGGGCCAGCAAGCCCCAGGGACACCGAAGCCAGCGTCTGCGCTTCCGGCAGTTCAGTACCA
CGTGGCGAGCGGGCCGACCTCGCGCTGGGCCAGCTCTGGACGCTGTGCCCCAGTGGCTGAGGCCCGAG
GCGCGCTCCAAGGAGCAGATGCTGGAGCTGCTGGTGTGGAGCAGTTCCTGGCGCGCTGCCAGCAAGA
TCCGGACCTGGGTGCAGTCACAGGGCCCCGAAGCTGCAGGGAGGCCGCCAGCCTGGTGGAGGACCTCAC
ACAGATGTGCCAGCAGGAAGTTCTGGTATCTCTGGACTCGGTGCAACCCAGGACTGGAGTTTCGGTGGAG
GAGGAAGATGGGAAGAGTCCAAGTCCCAGAAAGAACCATCGCAGGCGTCTGAGCTGATTCTGGATGCAG
TGGCAGCAGCCCCAGCACTCCCCAGGAAAGTGGTGGTGGAGACTACCCAGCTCCAGCAGAGTCTGCA
CACCAGGGCGGAGGCCGAAGCGCCCCGCGCCCCCTGGCTTGGTGGGGTCCCGGGCCCGCTTGCCCTGAAG
CCGAGTATCTGGGACGAGCCTGAGGACCTTCTCGCAGGGCCCTCCTCAGACCTGCGGGCAGAAAGGACTG
TGATCTCGAGCCCCAAGGGTCCAAGTGTCTCAGAGAATCAGTCCCCGAAGGAGAAACAGGAACACTGACCA
GAGCGGCCGCCACCAGCCATCCCTCAAGCACACCAAAGGTGGTACCCAAGAGGCTGTTGCAGGCATCTCG
GTAGTCCCGCTGGGCCCGAGGTGGGGCGCCCTCCAGTGTGCCGACTGTGGGATGGTCTCACCTGGG
TCAACCACTTTCATCGAGCACAGAAAGACCCATCGCGAGGAAGGGCCCTTCCGTGCCCGAGTGTGGCAA
GGTCTTCTGCACAACCTCCGTCCTCACTGAGCATGGCAAGATCCACCTGTGGAGCCACCGAGGAAGAAA
GCCCCCGGAGCAAGGGCCCCGGGAGTCCGTCCACCCAGGGATGGAGCCAGGGCCAGTGGCCCTC
GCAGCCCCAAAAGACCCTTCCAGTGTAGCGTCTGCGGGAAGGCCTTCCCTGGATGGTCCACCTCATTGA
CCACCAGAAGCTCCACACGGCCACGGCCACATG

ACGCGTACGCGGCCGCTCGAGCAGAAACTCATCTCAGAAGAGGATCTGGCAGCAAATGATATCCTGGATT
ACAAGGATGACGACGATAAGGTTTAA



Protein Sequence: >RC221074 representing NM_182572
Red=Cloning site Green=Tags(s)

MLPRPKAPASPRRPQTPTPSEQDADPGPASPRDTEAQLRFRQFYHVASGPHLALGQLWTLCRQWLRPE
 ARSKEQMLELLVLEQFLGALPSKMRTWVQSOGPRSCREASLVEDLTQMCQQEVLVSLDSVEPQDWSFGE
 EEDGKSPRSQKEPSQASELILDVAVAAPALPEEWELETTLQQLSLHTRAEAEAPRAPGLLGSRARLPLK
 PSIWDEPEDLLAGPSSDLRAEGTVISSPKGPSAQRI SPRRRNRNTDQSGRHQPSLKHTKGGTQEAVAGIS
 VVPRGPRGRRPFQCADCGMVFVTWVTHFIEHQKTHREEGPFPCPECGKVFLHNSVLTEHGKIHLLEPPRKK
 APRSKGPRESVPPRDGAQGPVAPRSPKRPFQCSVCGKAFPWMVHLIDHQKLHTAHGHM

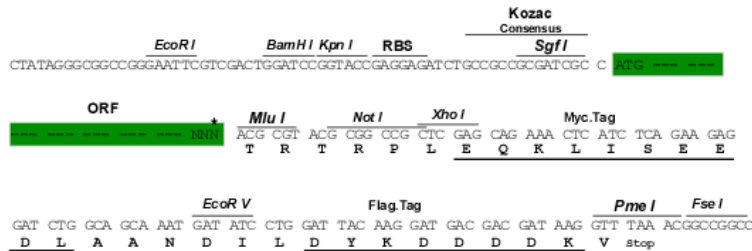
TRTRPLEQKLISEEDLAANDILDYKDDDDKV

Chromatograms: https://cdn.origene.com/chromatograms/mk8043_a06.zip

Restriction Sites: SgfI-MluI

Cloning Scheme:

Cloning sites used for ORF Shuttling:



ACCN: NM_182572

ORF Size: 1224 bp

OTI Disclaimer: The molecular sequence of this clone aligns with the gene accession number as a point of reference only. However, individual transcript sequences of the same gene can differ through naturally occurring variations (e.g. polymorphisms), each with its own valid existence. This clone is substantially in agreement with the reference, but a complete review of all prevailing variants is recommended prior to use. [More info](#)

OTI Annotation: This clone was engineered to express the complete ORF with an expression tag. Expression varies depending on the nature of the gene.

Components: The ORF clone is ion-exchange column purified and shipped in a 2D barcoded Matrix tube containing 10ug of transfection-ready, dried plasmid DNA (reconstitute with 100 ul of water).

Reconstitution Method:

1. Centrifuge at 5,000xg for 5min.
2. Carefully open the tube and add 100ul of sterile water to dissolve the DNA.
3. Close the tube and incubate for 10 minutes at room temperature.
4. Briefly vortex the tube and then do a quick spin (less than 5000xg) to concentrate the liquid at the bottom.
5. Store the suspended plasmid at -20°C. The DNA is stable for at least one year from date of shipping when stored at -20°C.

RefSeq: [NM_182572.4](#)

RefSeq Size: 2052 bp

RefSeq ORF: 1227 bp

Locus ID: 284312

UniProt ID: [Q8NBB4](#)

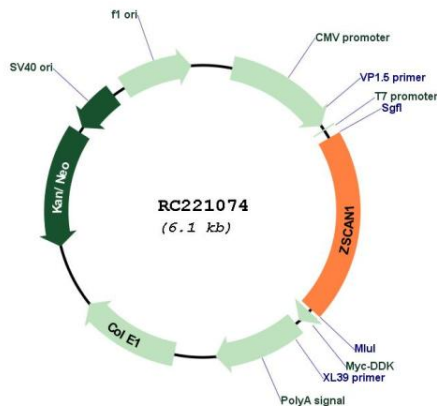
Cytogenetics: 19q13.43

Protein Families: Transcription Factors

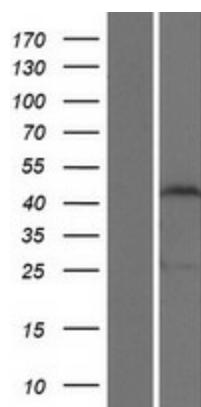
MW: 45.1 kDa

Gene Summary: May be involved in transcriptional regulation.[UniProtKB/Swiss-Prot Function]

Product images:



Circular map for RC221074



Western blot validation of overexpression lysate (Cat# [LY405491]) using anti-DDK antibody (Cat# [TA50011-100]). Left: Cell lysates from untransfected HEK293T cells; Right: Cell lysates from HEK293T cells transfected with RC221074 using transfection reagent MegaTran 2.0 (Cat# [TT210002]).