

## Product datasheet for **RC221056**

### **BTG3 (NM\_006806) Human Tagged ORF Clone**

#### Product data:

**Product Type:** Expression Plasmids  
**Product Name:** BTG3 (NM\_006806) Human Tagged ORF Clone  
**Tag:** Myc-DDK  
**Symbol:** BTG3  
**Synonyms:** ANA; ANA/BTG3; APRO4; TOB5; TOB55; TOFA  
**Mammalian Cell Selection:** Neomycin  
**Vector:** pCMV6-Entry (PS100001)  
**E. coli Selection:** Kanamycin (25 ug/mL)  
**ORF Nucleotide Sequence:** >RC221056 representing NM\_006806  
**Red=Cloning site Blue=ORF Green=Tags(s)**

TTTTGTAATACGACTCACTATAGGGCGGCCGGAATTCGTCGACTGGATCCGGTACCGAGGAGATCTGCC  
GCC**CGATCGCC**

ATGAAGAATGAAATTGCTGCCGTTGTCTTCTTTTTCACAAAGGCTAGTTCGAAAACATGATAAGTTGAAAA  
AAGAGGCAGTTGAGAGGTTTGTGAGAAATTGACCCTAATACTTCAAGAAAAATATAAAAATCACTGGTA  
TCCAGAAAACCATCGAAAGGACAGGCCTACAGATGTATTCGTGTCAATAAATTTAGAGAGTTGATCCT  
GATGTCCTGAAAGCCTGTGAAAACAGCTGCATCTTGATAGTGACCTGGGCTTGCCAAAGGAGCTCACTC  
TCTGGGTGGACCCATGTGAGGTGTGCTGTCCGGTATGGAGAGAAAAACAATGCATTATTGTTGCCAGCTT  
TGAAAATAAAGATGAGAAACAAGGATGAGATCTCCAGGAAAGTTACCAGGGCCCTTGATAAGGTTACCTCT  
GATTATCATTAGGATCCTCTTCTTCAGATGAAGAAACAAGTAAGGAAATGGAAGTGAAACCCAGTTCGG  
TGACTGCACCGCAAGTCTGTGTACCAGATTTGAGAATTTATTTCCACCTCTTCCAATGTGGCACCC  
TTTGCCAGAAAAAGCCAGGAATGTATCGAGGGAATGGCCATCAGAATCACTATCCTCCTCCTGTTCCA  
TTTGTTATCCAATCAGGGAAGAAAAATAAACCATATCGCCCAATCCAGTGACATGGGTACCTCCTC  
CTGGAATGCATTGTGACCGGAATCACTGGATTAATCCTCATATGTTAGCACCTCAC

**ACGCGT**ACGCGGCCGCTCGAGCAGAACTCATCTCAGAAGAGGATCTGGCAGCAAATGATATCCTGGATT  
ACAAGGATGACGACGATAAGGTTTAA



[View online »](#)

**Protein Sequence:** >RC221056 representing NM\_006806  
 Red=Cloning site Green=Tags(s)

MKNEIAAVVFFFTRLVRKHKLKEAVERFAEKLTLILQEYKNHWYPEKPSKGQAYRCIRVNFQRVDP  
 DVLKACENSCILYSDLGLPKELTLWVDPCEVCCRYGEKNNAFIVASFENKDENKDEISRKVTALDKVTS  
 DYHSGSSSSDEETSKEMEVKPSVTAASPYYQISELIFPPLPMWHPLPRKKPGMYRGNHGHQNHYPVPPV  
 FGYPNQGRKNKPYRPIPTVWVPPPGMHCDRNHWINPHMLAPH

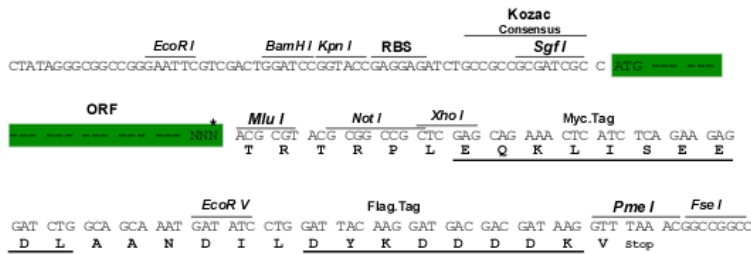
TRTRPLEQKLISEEDLAANDILDYKDDDDKV

**Chromatograms:** [https://cdn.origene.com/chromatograms/mk6242\\_a09.zip](https://cdn.origene.com/chromatograms/mk6242_a09.zip)

**Restriction Sites:** SgfI-MluI

**Cloning Scheme:**

Cloning sites used for ORF Shuttling:



\* The last codon before the Stop codon of the ORF

**ACCN:** NM\_006806

**ORF Size:** 756 bp

**OTI Disclaimer:** The molecular sequence of this clone aligns with the gene accession number as a point of reference only. However, individual transcript sequences of the same gene can differ through naturally occurring variations (e.g. polymorphisms), each with its own valid existence. This clone is substantially in agreement with the reference, but a complete review of all prevailing variants is recommended prior to use. [More info](#)

**OTI Annotation:** This clone was engineered to express the complete ORF with an expression tag. Expression varies depending on the nature of the gene.

**Components:** The ORF clone is ion-exchange column purified and shipped in a 2D barcoded Matrix tube containing 10ug of transfection-ready, dried plasmid DNA (reconstitute with 100 ul of water).

**Reconstitution Method:**

1. Centrifuge at 5,000xg for 5min.
2. Carefully open the tube and add 100ul of sterile water to dissolve the DNA.
3. Close the tube and incubate for 10 minutes at room temperature.
4. Briefly vortex the tube and then do a quick spin (less than 5000xg) to concentrate the liquid at the bottom.
5. Store the suspended plasmid at -20°C. The DNA is stable for at least one year from date of shipping when stored at -20°C.

**Note:** Plasmids are not sterile. For experiments where strict sterility is required, filtration with 0.22um filter is required.

**RefSeq:** [NM\\_006806.5](#)

**RefSeq Size:** 1378 bp

**RefSeq ORF:** 759 bp

**Locus ID:** 10950

**UniProt ID:** [Q14201](#)

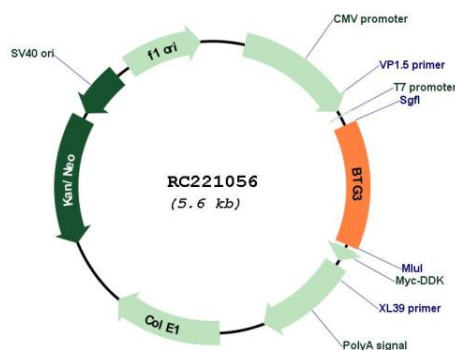
**Cytogenetics:** 21q21.1

**Domains:** Anti\_proliferat

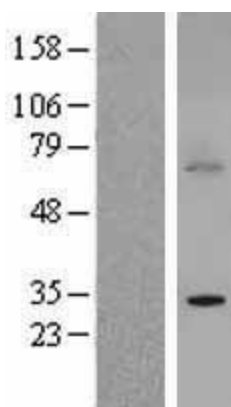
**MW:** 28.9 kDa

**Gene Summary:** The protein encoded by this gene is a member of the BTG/Tob family. This family has structurally related proteins that appear to have antiproliferative properties. This encoded protein might play a role in neurogenesis in the central nervous system. Two transcript variants encoding different isoforms have been found for this gene. [provided by RefSeq, Aug 2008]

### Product images:



Circular map for RC221056



Western blot validation of overexpression lysate (Cat# [LY416410]) using anti-DDK antibody (Cat# [TA50011-100]). Left: Cell lysates from untransfected HEK293T cells; Right: Cell lysates from HEK293T cells transfected with RC221056 using transfection reagent MegaTran 2.0 (Cat# [TT210002]).