

Product datasheet for **RC221053**

OSBPL9 (NM_148908) Human Tagged ORF Clone

Product data:

Product Type:	Expression Plasmids
Product Name:	OSBPL9 (NM_148908) Human Tagged ORF Clone
Tag:	Myc-DDK
Symbol:	OSBPL9
Synonyms:	ORP-9; ORP9
Mammalian Cell Selection:	Neomycin
Vector:	pCMV6-Entry (PS100001)
E. coli Selection:	Kanamycin (25 ug/mL)



[View online »](#)

ORF Nucleotide Sequence:

>RC221053 representing NM_148908
 Red=Cloning site Blue=ORF Green=Tags(s)

TTTTGTAATACGACTCACTATAGGGCGGCCGGAATTCGTCGACTGGATCCGGTACCGAGGAGATCTGCC
 GCC**CGCATCGCC**

ATGGCGTCCATCATGGAAGGGCCGCTGAGCAAATGGACTAACGTGATGAAGGGCTGGCAGTACCGTTGGT
 TCGTGCTGGACTACAATGCAGGACTGCTCTCCTACTACACGTCCAAGGACAAAATGATGAGAGGCTCTCG
 CAGAGGATGTGTTAGACTCAGAGGAGCTGTGATTGGTATAGACGATGAGGACGACAGCACCTTCACAATA
 ACTGTTGATCAGAAAACCTTCCATTTCCAGGCCGCTGATGCTGATGAGCGAGAGAAGTGGATCCATGCCT
 TAGAAGAAACAATTCTTCGACATACTCTCCAGCTTCAAGGTTTGGATTCCAGGATTTGTTCTAGTGCCA
 AGATTTTGATAAGAACTTACAGAAGCTGATGCTTACCTACAAATCTTGATTGAACAATTAAGCTTTTT
 GATGACAAGCTTCAAACCTGCAAAGAAGATGAACAGAGAAAGAAAATTGAACTCTCAAAGACAAACA
 ATAGCATGGTAGAATCAATTAACACTGCATTGTGTTGCTGCAGATTGCCAAAAGTACTATTAATCCCGT
 AGATGCAATATATCAACCTAGTCTTTGGAACCTGTGATCAGCACAATGCCTTCCAGACTGTGTTACCT
 CCAGAACCTGTTCAAGTTGTGAAGTCAGAGCAGGTCATCTTCCCTACCAAGTTGGACCTGTGTTGGCTA
 CCTTGGGACATCATCAGACTCCTACACCAATAGTACAGGCAGTGGCCATTACACCACCGAGTAGCAGTCT
 CACTTCTCCAAGCCACGTGAACCTGTCTCCAAATACAGTCCCAGAGTTCTCTTACTCCAGCAGTGAAGAT
 GAATTTTATGATGCTGATGAATTCATCAAAGTGGCTCATCCCCAAAGCGCTTAATAGATTCTTCTGGAT
 CTGCCTCAGTCTGACACACAGCAGCTCGGAAATAGTCTAAAACGCCAGATACCACAGAATCACTTAA
 TTCTTCTTGTCCAATGGAACAAGTGTGCTGACCTGTTGATTACATGATGACAGAGATGATGATGCG
 GAGGCAGGGTCTGTGGAGGAGCACAAGAGCGTTATCATGCATCTTGTGCGAGGTTAGACTTGGAAATGG
 ATCTTACTAAGGTAGTTCTTCAACGTTTATTCTTGAAGAAGATCTCTTTTGAATAATGTATGCAGACT
 TTTTGCACATCCGGACCTGTTTGTGAGCATTAGTGACCAGAAGGATCCCAAGGATCGAATGGTTCAGGTT
 GTGAAATGGTACCTCTCAGCCTTTCATGCGGGAAGGAAAGGATCAGTTGCCAAAAAGCCATACAATCCCA
 TTTTGGGCGAGATTTTTAGTGTGATTGGACATTACCAATGATACTGAAGAGAACACAGAAGTATTTT
 AGAAGGACCAGTTCCTGGGTTTCCAAAAACAGTGAACATTTGTGGCTGAGCAGGTTTCCCATCATCCA
 CCCATTTAGCCTTTTATGCTGAGTGTTTTAAACAAGAAGATACAATTCATGCTCATATCTGGACCAAT
 CAAAATTCCTTGGGATGTCAATTGGGGTGCACAACATAGGGCAGGGCTGTGTCTCATGTCTAGACTATGA
 TGAACATTACATTCTCACATTCCTCAATGGCTATGGAAGGTCTATCCTCACAGTGCCTGGGTGGAATTA
 GGAGGAGAAATGCAATATTAATTGTCCAAAACAGGCTATAGTGCAATATCATCTCCACACTAAACCTT
 TCTATGGGGCAAGAAGCACAGAATTACTGCCGAGATTTTTCTCCAAATGACAAGAAGTCTTTTTGCTC
 AATTGAAGGGGAATGGAATGGTGTGATGTATGCAAAATATGCAACAGGGGAAAATACAGTCTTTGTAGAT
 ACCAAGAAGTTGCCTATAATCAAGAAGAAAGTGAGGAAGTTGGAAGATCAGAACGAGTATGAATCCCGCA
 GCCTTTGGAAGGATGTCATTTCAACTTAAAAATCAGAGACATTGATGCAGCAACTGAAGCAAAGCACAG
 GCTTGAAGAAAGACAAAGAGCAGAAGCCCGAGAAAGGAAGGAGAAGGAAATTCAGTGGGAGACAAGGTTA
 TTTTATGAAGATGGAGAATGCTGGGTTTATGATGAACCATTACTGAAACGTCTTGGTGTGCCAAGCAT

ACGCGTACGCGGCCGCTCGAGCAGAACTCATCTCAGAAGAGGATCTGGCAGCAAATGATATCCTGGATT
 ACAAGGATGACGACGATAAGGTTTAA

Protein Sequence: >RC221053 representing NM_148908
Red=Cloning site Green=Tags(s)

MASIMEGPLSKWTNVMKGWQYRWFVLDYNAGLLSYTTSKDKMMRGSRRGCVRLRGAIVIGIDDEDDSTFTI
 TVDQKTFHFQARDADEREKWIHALEETILRHTLQQLDLSGFVPSVQDFDKLLEADAYLQILIEQLKLF
 DDKLQNKCEDEQRKKIETLKETTNSMVESIKHCIVLLQIAKSTINPVDAIYQSPLEPVIStMPSQTVLP
 PEPVQLCKSEQRPSLPVGPVLA TLGHHQTPTPNSTGSGHSPSSSLTSPSHVNLSPNTVPEFSYSSSED
 EFDYDADEFHQSGSSPKRLIDSSGSASVLTHSSGNSLKRPDTTESLNSSLNNGTSDADLFDSHDDRDDA
 EAGSVEEHKSVIMHLLSQVRLGMDLTKVVLPTFLERRSLEMYADFFAHPDLFVSI SDQKDPKDRMVQV
 VKWYLSAFHAGRKGSVAKKPYNPILGEIFQCHWTL PNDTEENELVSEGPVWVSKNSVTFVAEQVSHHP
 PISAFYAECFNKKIQFNAHIWTKSKFLGMSIGVHNIQGQCVSCLDYDEHYILTFPNGYGRSILTPVWVEL
 GGECNINCSKTGYSANII FHTKPFYGGKKHRITAEIFSPNDKKSFC SIEGEWNGVMYAKYATGENTVFVD
 TKKLP I I K K K V R K L E D Q N E Y E S R S L W K D V T F N L K I R D I D A A T E A K H R L E E R Q R A E A R E R K E K E I Q W E T R L
 FHEDGECWVYDEPLLKRLGA AKH

TRTRPLEQKLI SEEDLAANDILDYKDDDDKV

Chromatograms: https://cdn.origene.com/chromatograms/mg3428_b03.zip

Restriction Sites: SgfI-MluI

Cloning Scheme:

Cloning sites used for ORF Shuttling:



* The last codon before the Stop codon of the ORF

ACCN: NM_148908

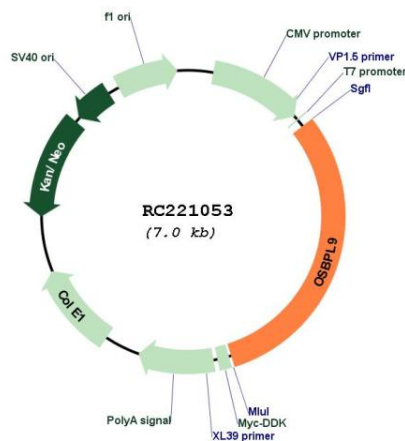
ORF Size: 2169 bp

OTI Disclaimer: The molecular sequence of this clone aligns with the gene accession number as a point of reference only. However, individual transcript sequences of the same gene can differ through naturally occurring variations (e.g. polymorphisms), each with its own valid existence. This clone is substantially in agreement with the reference, but a complete review of all prevailing variants is recommended prior to use. [More info](#)

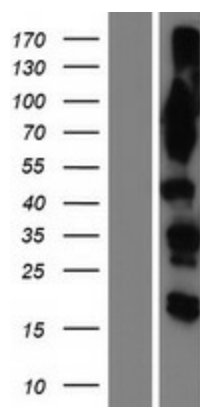
OTI Annotation: This clone was engineered to express the complete ORF with an expression tag. Expression varies depending on the nature of the gene.

Components:	The ORF clone is ion-exchange column purified and shipped in a 2D barcoded Matrix tube containing 10ug of transfection-ready, dried plasmid DNA (reconstitute with 100 ul of water).
Reconstitution Method:	<ol style="list-style-type: none"> 1. Centrifuge at 5,000xg for 5min. 2. Carefully open the tube and add 100ul of sterile water to dissolve the DNA. 3. Close the tube and incubate for 10 minutes at room temperature. 4. Briefly vortex the tube and then do a quick spin (less than 5000xg) to concentrate the liquid at the bottom. 5. Store the suspended plasmid at -20°C. The DNA is stable for at least one year from date of shipping when stored at -20°C.
RefSeq:	<u>NM_148908.4</u>
RefSeq Size:	2880 bp
RefSeq ORF:	2172 bp
Locus ID:	114883
UniProt ID:	<u>Q96SU4</u>
Cytogenetics:	1p32.3
MW:	81.6 kDa
Gene Summary:	This gene encodes a member of the oxysterol-binding protein (OSBP) family, a group of intracellular lipid receptors. Most members contain an N-terminal pleckstrin homology domain and a highly conserved C-terminal OSBP-like sterol-binding domain, although some members contain only the sterol-binding domain. This family member functions as a cholesterol transfer protein that regulates Golgi structure and function. Multiple transcript variants, most of which encode distinct isoforms, have been identified. Related pseudogenes have been identified on chromosomes 3, 11 and 12. [provided by RefSeq, Jul 2010]

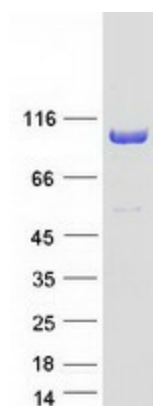
Product images:



Circular map for RC221053



Western blot validation of overexpression lysate (Cat# [LY407764]) using anti-DDK antibody (Cat# [TA50011-100]). Left: Cell lysates from untransfected HEK293T cells; Right: Cell lysates from HEK293T cells transfected with RC221053 using transfection reagent MegaTran 2.0 (Cat# [TT210002]).



Coomassie blue staining of purified OSBPL9 protein (Cat# [TP321053]). The protein was produced from HEK293T cells transfected with OSBPL9 cDNA clone (Cat# RC221053) using MegaTran 2.0 (Cat# [TT210002]).