

Product datasheet for **RC221044**

GABRG3 (NM_033223) Human Tagged ORF Clone

Product data:

Product Type:	Expression Plasmids
Product Name:	GABRG3 (NM_033223) Human Tagged ORF Clone
Tag:	Myc-DDK
Symbol:	GABRG3
Mammalian Cell Selection:	Neomycin
Vector:	pCMV6-Entry (PS100001)
E. coli Selection:	Kanamycin (25 ug/mL)



[View online »](#)

ORF Nucleotide Sequence:

>RC221044 representing NM_033223
 Red=Cloning site Blue=ORF Green=Tags(s)

TTTTGTAATACGACTCACTATAGGGCGGCCGGAATTCGTCGACTGGATCCGGTACCGAGGAGATCTGCC
 GCC**GCGATCGCC**

ATGGCCCCGAAGCTGCTGCTCCTCTGCTGTCTCGGGCTTGCACGCGCGGTCCAGAAAGTGGAAAG
 AGGATGAATATGAAGATTCATCATCAAACCAAAAGTGGGTCTTGCTCCAAAATCCCAAGACACCGACGT
 GACTCTTATTCTCAACAAGTTGCTAAGAGAATATGATAAAAAGCTGAGGCCAGATATTGGAATAAAACCG
 ACCGTAATTGACGTTGACATTTATGTTAACAGCATTGGTCTGTGTCATCAATAAACATGGAATACCAAA
 TTGACATATTTTTGCTCAGACCTGGACAGATAGTCGCCCTTCGATTCAACAGCACAATGAAAATTCTTAC
 TCTGAACAGCAACATGGTGGGTTAATCTGGATCCCAGACACCATCTCCGCAATTCTAAAACCGCAGAG
 GCTCACTGGATCACCACACCCAATCAGCTCCTCCGGATTTGGAATGACGGGAAAACTCTTACACTTTGA
 GGCTCACCATCAATGCTGAGTGCCAGCTGCAGCTGCACAACCTCCCATGGACGAACACTCTGCCCGCT
 GATTTTCTCCAGCTATGGCTATCCCAAAGAAGAAATGATTTATAGATGGAGAAAAATTCAGTGGAGGCA
 GCTGACCAGAAAATCATGGCGGCTTATCAGTTTGACTTCATGGGCCTCAGAAACACCACAGAAAATCGTGA
 CAACGTCTGCAGGTGATTATGTTGTCATGACTATATATTTGAATTGAGTAGAAGATGGGATACTTCAC
 CATTGACACATACATTCCTGTATACTGACTGTGGTTTTATCCTGGGTGTCATTTTGGATCAAAAAAGAT
 GCTACGCCAGCAAGAAGCATTAGGCATCACCACGGTGTGACCATGACCACCTGAGCACCATCGCCA
 GGAAGTCTTGCCACGCGTGTCTACGTGACCGCCATGGACCTTTTTGTGACCGTGTGCTTCTGTTTGT
 CTTGCGCCGCGTGATGGAGTATCCACCCTCAACTACTATTCCAGCTGTAGAAAACCAACCACCAAGAG
 AAGACAACATCGTTACTACATCCAGATTCCTCAAGATGGATTCTGAGCGAATAAGCCTACAAGCCCTT
 CCAACTATTCCTCCTGGACATGAGGCCACCACCAACTGCGATGATCACTTTAAACAATTCGTTTACTG
 GCAGGAATTTGAAGATACCTGTGTCTATGAGTGTCTGGATGGCAAGACTGTCAGAGCTTCTTCTGCTGC
 TATGAAGAATGTAATCAGGATCCTGGAGGAAAGGGCGTATTCACATAGACATCTTGAGCTGGACTCGT
 ACTCCCGGGTCTTTTTCCCCACGCTCTTCTGCTCTTTAACCTGGTCTACTGGGTGGATACCTGTATCT
 CAGCGGTCCG

AG**GCGACCG**ACGCGTACGCGGCCGCTCGAGCAGAAACTCATCTCAGAAGAGGATCTGGCAGCAAATGATATCC
 TGGATTACAAGGATGACGACGATAAGGTTTAA

Protein Sequence:

>RC221044 representing NM_033223
 Red=Cloning site Green=Tags(s)

MAPKLLLLLCLFSGLHARSRKVEEDEYEDSSSNQKWLAPKSQDQDVTLLNKLREYDKKLRPDIGIKP
 TVIDVDIYVNSIGPVSSINMEYQIDIFFAQTWDSRLRFNSTMKILTLNSNMVGLIWIPDTIFRNSKTAE
 AHWITTPNQLLRIWNDGKILYTLRLTINAECQLQLHNFPMDEHSCPLIFSSYGYPKEMIYRWRKNSVEA
 ADQKSWRLYQDFMGLRNTTEIVTTSAGDYVVMTIYFELSRRMGYFTIQYIIPCILTVVLSWVSFWIKKD
 ATPARTALGITTVLMTTLSTIARKSLPRVSYVTAMDLFVTVCFVFAALMEYSTLNYYSSCRKPTTTK
 KTTSLHPDSSRWIPERISLQAPSNYSLLDMRPPPTAMITLNSVYWQEFEDTCVYECLDGKDCQSFCC
 YEECKSGSWRKGRIHIDILELDSYSRVFFPTSFLLFNLVYVWGYLYLSP

SGPTRTRRLEQKLISEEDLAANDILDYKDDDDKV

Chromatograms:

https://cdn.origene.com/chromatograms/mg2513_f01.zip

Restriction Sites:

Sgfl-RsrII

Cloning Scheme:


ACCN: NM_033223

ORF Size: 1410 bp

OTI Disclaimer: The molecular sequence of this clone aligns with the gene accession number as a point of reference only. However, individual transcript sequences of the same gene can differ through naturally occurring variations (e.g. polymorphisms), each with its own valid existence. This clone is substantially in agreement with the reference, but a complete review of all prevailing variants is recommended prior to use. [More info](#)

OTI Annotation: This clone was engineered to express the complete ORF with an expression tag. Expression varies depending on the nature of the gene.

Components: The ORF clone is ion-exchange column purified and shipped in a 2D barcoded Matrix tube containing 10ug of transfection-ready, dried plasmid DNA (reconstitute with 100 ul of water).

- Reconstitution Method:**
1. Centrifuge at 5,000xg for 5min.
 2. Carefully open the tube and add 100ul of sterile water to dissolve the DNA.
 3. Close the tube and incubate for 10 minutes at room temperature.
 4. Briefly vortex the tube and then do a quick spin (less than 5000xg) to concentrate the liquid at the bottom.
 5. Store the suspended plasmid at -20°C. The DNA is stable for at least one year from date of shipping when stored at -20°C.

RefSeq: [NM_033223.5](#)

RefSeq Size: 1536 bp

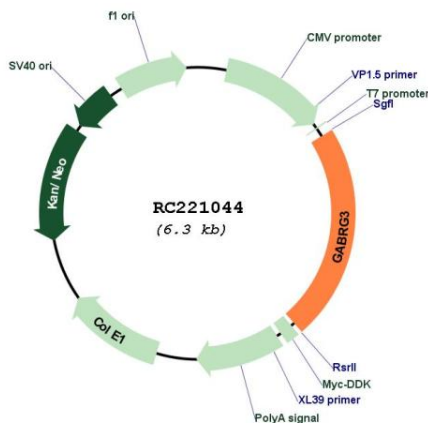
RefSeq ORF: 1404 bp

Locus ID: 2567

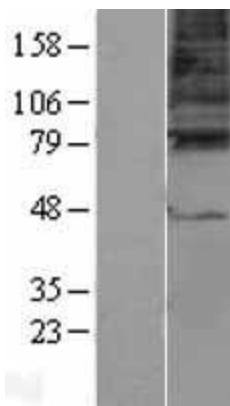
UniProt ID: [Q99928](#)

Cytogenetics: 15q12
Domains: Neur_chan_memb, Neur_chan_LBD
Protein Families: Druggable Genome, Ion Channels: Cys-loop Receptors, Transmembrane
Protein Pathways: Neuroactive ligand-receptor interaction
MW: 54.1 kDa
Gene Summary: This gene encodes a gamma-aminobutyric acid (GABA) receptor. GABA is the major inhibitory neurotransmitter in the mammalian brain where it acts at GABA-A receptors, which are ligand-gated chloride channels. Chloride conductance of these channels can be modulated by agents such as benzodiazepines that bind to the GABA-A receptor. GABA-A receptors are pentameric, consisting of proteins from several subunit classes: alpha, beta, gamma, delta and rho. The protein encoded by this gene is a gamma subunit, which contains the benzodiazepine binding site. Two transcript variants encoding distinct isoforms have been found for this gene. [provided by RefSeq, Aug 2012]

Product images:



Circular map for RC221044



Western blot validation of overexpression lysate (Cat# [LY403235]) using anti-DDK antibody (Cat# [TA50011-100]). Left: Cell lysates from untransfected HEK293T cells; Right: Cell lysates from HEK293T cells transfected with RC221044 using transfection reagent MegaTran 2.0 (Cat# [TT210002]).