

Product datasheet for **RC221043**

CPNE1 (NM_152929) Human Tagged ORF Clone

Product data:

Product Type:	Expression Plasmids
Product Name:	CPNE1 (NM_152929) Human Tagged ORF Clone
Tag:	Myc-DDK
Symbol:	CPNE1
Synonyms:	copine-1; copine I; COPN1; CPN1; MGC1142; OTTHUMP00000030775; OTTHUMP00000030776
Mammalian Cell Selection:	Neomycin
Vector:	pCMV6-Entry (PS100001)
E. coli Selection:	Kanamycin (25 ug/mL)



[View online »](#)

ORF Nucleotide Sequence:

>RC221043 ORF sequence
 Red=Cloning site Blue=ORF Green=Tags(s)

TTTTGTAATACGACTCACTATAGGGCGGCCGGAATTCGTCGACTGGATCCGGTACCGAGGAGATCTGCC
 GCC**CGGATCGCC**

ATGGCCACTGCGTGACCTTGGTTGAGCTGTCCATTTCTGTGACCATCTCATTGACAAGGACATCGGCT
 CCAAGTCTGACCCACTCTGCGTCTTTTACAGGATGTGGGAGGGGACAGCTGGGCTGAGCTTGCCGGAC
 TGAACGGGTGCGAACTGCTCAAGCCCTGAGTTCTCAAGACTCTACAGCTTGAGTACCGCTTTGAGACA
 GTCCAGAAGCTACGCTTTGGAATCTATGACATAGACAACAAGACGCCAGAGCTGAGGGATGATGACTTCC
 TAGGGGTGCTGAGTGTCCCTAGGACAGATTGTGTCCAGCCAGGTAAGTACTCTCCCTTGATGCTGAA
 GCCTGGAAAACCTGCTGGGCGGGGACCATCACGGTCTCAGCTCAGGAATTAAGGACAATCGTGTAGTA
 ACCATGGAGGTAGAGGCCAGAACTAGATAAGAAGGACTTCTGGGAAAATCAGATCCATTTCTGGAGT
 TCTTCCGCCAGGGTATGGGAAATGGCACCTGGTGTACAGATCTGAGGTCATCAAGAACAACCTGAACCC
 TACATGGAAGCGTTTCTCAGTCCCGTTGAGCATTCTGTGGTGGAAACCCAGCACACCCATCCAGGTG
 CAATGCTCCGATTATGACAGTGACGGGTACATGATCTCATCGGTACCTCCACACCAGCTTGCCCCAGC
 TGCAGGACGTCGCCGCTGAGTTGAATGCATCCACCTGAGAAGCAGCAGAAAAAGAAAGCTACAAGAA
 CTCTGGAATATCCGTGTCAAGATTTGTCGGGTAGAAACAGAGTACTCCTTTCTGGACTATGTGATGGGA
 GGCTGTGAGTCAACTTCACTGTGGGCTGGACTTCACTGGTCCAATGGAGACCCTCCTCACCTGACT
 CCCTACACTACCTGAGTCCAACAGGGGTCAATGAGTACCTGATGGCACTGTGGAGTGTGGGACGCGTGGT
 TCAGGACTATGACTCAGACAAGCTGTCCCTGCATTTGGATTTGGGGCCAGGTTCCCTGACTGGCAG
 GTCTCGCATGAATTTGCCTTGAATTTCAACCCAGTAACCCCTACTGTGCAGGCATCCAGGGCATTGTGG
 ATGCCTACGCCAAGCCCTGCCCAAGTTCGCCTCTATGGCCCTACCAACTTTGCACCCATCATCAACCA
 TGTGGCCAGGTTTGCAGCCAGGCTGCACATCAGGGGACTGCCTCGCAATACTTCATGCTGTTGCTGCTG
 ACTGATGGTGTGTGACGGATGTGGAAGCCACACGTGAGGCTGTGGTGCCTCGAACCTGCCATGT
 CAGTGATCATTGTGGGTGTGGTGGTGTGACTTTGAGGCCATGGAGCAGCTGGACGCTGATGGTGGACC
 CCTGCATACAGTTCTGGGACGGCTGTGCCCGGACATTGTGCAGTTTGTACCTACCGCCGGTCCAG
 AATGCCCTCGGGAGGCATTGGCACAGACCGTGTGCGAGAAGTGCCACACAACCTGGTCTCATACTTCA
 GGGCCAGGGTTGGGCCCGCTCAAGCCACTTCCACCCTCAGCCAAGGATCTGCACAGGCCCCCGAGCC
 C

ACGCGTACGCGGCCGCTCGAGCAGAACTCATCTCAGAAGAGGATCTGGCAGCAAATGATATCCTGGATT
 ACAAGGATGACGACGATAAGGTTTAA

Protein Sequence:

>RC221043 protein sequence
 Red=Cloning site Green=Tags(s)

MAHCVTLVQLSISCDHLIDKDIGSKSDPLCVLLQDVGGGWAELGRTERVRNCSSPEFSKTLQLEYRFET
 VQKLRFGIYDIDNKTPELRDDDFLGAECSLGQIVSSQVLTPLMLKPGKPAGRGITVSAQELKDNRVV
 TMEVEARNLDDKDFLGSDFLEFFRQGDGKWHLYYRSEVIKNNLNPTWKRFVSPVQHFCCGPNPSTPIQV
 QCSYDSDGSHDLIGTFHTSLAQLQAVPAEFECIHPEKQKQKSYKNSGTIRVKICRVETEYSFLDYVMG
 GCQINFVGVDFTGSDPSSPDSLHYLSPTGVNEYLMALWSVGSVVQDYSDKLFPAFGFGAQPDPDWQ
 VSHFALNPNPNPYCAGIQGIVDAYRQALPQVRLYGPTNFAPIINHVARFAAQAAHQGTASQYFMLLLL
 TDGAVTDVEATREAVVRASNLPMSEVIVGVGGADFEAMEQLDADGGPLHTRSGQAAARDIVQFVYRRFQ
 NAPREALAQTVLAQVPTQLVSYFRAQGWAPLKLPLPPSAKDPAQAPQA

TRTRPLEQKLISEEDLAANDILDYKDDDDKV

Chromatograms:

https://cdn.origene.com/chromatograms/mk6397_g11.zip

Restriction Sites:

Sgfl-MluI

Cloning Scheme:


ACCN: NM_152929

ORF Size: 1611 bp

OTI Disclaimer: The molecular sequence of this clone aligns with the gene accession number as a point of reference only. However, individual transcript sequences of the same gene can differ through naturally occurring variations (e.g. polymorphisms), each with its own valid existence. This clone is substantially in agreement with the reference, but a complete review of all prevailing variants is recommended prior to use. [More info](#)

OTI Annotation: This clone was engineered to express the complete ORF with an expression tag. Expression varies depending on the nature of the gene.

Components: The ORF clone is ion-exchange column purified and shipped in a 2D barcoded Matrix tube containing 10ug of transfection-ready, dried plasmid DNA (reconstitute with 100 ul of water).

- Reconstitution Method:**
1. Centrifuge at 5,000xg for 5min.
 2. Carefully open the tube and add 100ul of sterile water to dissolve the DNA.
 3. Close the tube and incubate for 10 minutes at room temperature.
 4. Briefly vortex the tube and then do a quick spin (less than 5000xg) to concentrate the liquid at the bottom.
 5. Store the suspended plasmid at -20°C. The DNA is stable for at least one year from date of shipping when stored at -20°C.

RefSeq: [NM_152929.1](#), [NP_690906.1](#)

RefSeq Size: 2199 bp

RefSeq ORF: 1613 bp

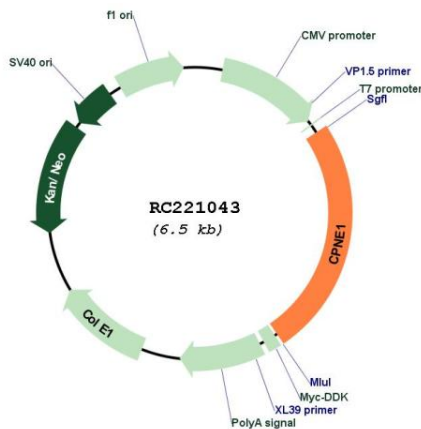
Locus ID: 8904

Cytogenetics: 20q11.22

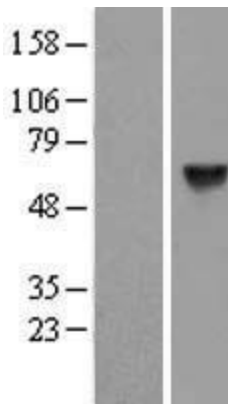
MW: 59.1 kDa

Gene Summary: Calcium-dependent membrane-binding proteins may regulate molecular events at the interface of the cell membrane and cytoplasm. This gene encodes a calcium-dependent protein that also contains two N-terminal type II C2 domains and an integrin A domain-like sequence in the C-terminus. However, the encoded protein does not contain a predicted signal sequence or transmembrane domains. This protein has a broad tissue distribution and it may function in membrane trafficking. This gene and the gene for RNA binding motif protein 12 overlap at map location 20q11.21. Alternate splicing results in multiple transcript variants encoding different proteins. [provided by RefSeq, Aug 2008]

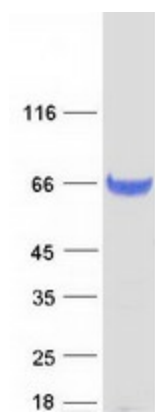
Product images:



Circular map for RC221043



Western blot validation of overexpression lysate (Cat# [LY407224]) using anti-DDK antibody (Cat# [TA50011-100]). Left: Cell lysates from untransfected HEK293T cells; Right: Cell lysates from HEK293T cells transfected with RC221043 using transfection reagent MegaTran 2.0 (Cat# [TT210002]).



Coomassie blue staining of purified CPNE1 protein (Cat# [TP321043]). The protein was produced from HEK293T cells transfected with CPNE1 cDNA clone (Cat# RC221043) using MegaTran 2.0 (Cat# [TT210002]).