

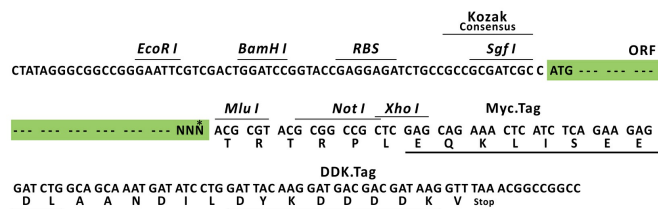
## Product datasheet for RC221033L1

### FATP2 (SLC27A2) (NM\_003645) Human Tagged ORF Clone

#### Product data:

Product Type:	Expression Plasmids
Product Name:	FATP2 (SLC27A2) (NM_003645) Human Tagged ORF Clone
Tag:	Myc-DDK
Symbol:	SLC27A2
Synonyms:	ACSVL1; FACVL1; FATP2; hFACVL1; HsT17226; VLACS; VLCS
Vector:	pLenti-C-Myc-DDK (PS100064)
E. coli Selection:	Chloramphenicol (34 ug/mL)
Cell Selection:	None
ORF Nucleotide Sequence:	The ORF insert of this clone is exactly the same as(RC221033).
Restriction Sites:	Sgfl-MluI
Cloning Scheme:	

Cloning sites used for ORF Shuttling:



\* The last codon before the Stop codon of the ORF.

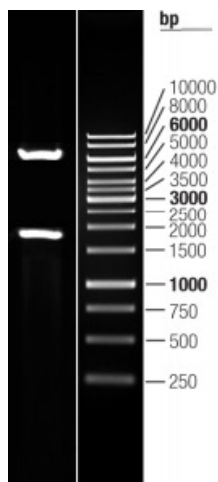
ACCN:	NM_003645
ORF Size:	1860 bp



[View online »](#)

<b>OTI Disclaimer:</b>	The molecular sequence of this clone aligns with the gene accession number as a point of reference only. However, individual transcript sequences of the same gene can differ through naturally occurring variations (e.g. polymorphisms), each with its own valid existence. This clone is substantially in agreement with the reference, but a complete review of all prevailing variants is recommended prior to use. <a href="#">More info</a>
<b>OTI Annotation:</b>	This clone was engineered to express the complete ORF with an expression tag. Expression varies depending on the nature of the gene.
<b>Components:</b>	The ORF clone is ion-exchange column purified and shipped in a 2D barcoded Matrix tube containing 10ug of transfection-ready, dried plasmid DNA (reconstitute with 100 ul of water).
<b>Reconstitution Method:</b>	<ol style="list-style-type: none"><li>1. Centrifuge at 5,000xg for 5min.</li><li>2. Carefully open the tube and add 100ul of sterile water to dissolve the DNA.</li><li>3. Close the tube and incubate for 10 minutes at room temperature.</li><li>4. Briefly vortex the tube and then do a quick spin (less than 5000xg) to concentrate the liquid at the bottom.</li><li>5. Store the suspended plasmid at -20°C. The DNA is stable for at least one year from date of shipping when stored at -20°C.</li></ol>
<b>RefSeq:</b>	<a href="#">NM_003645.2</a>
<b>RefSeq Size:</b>	2343 bp
<b>RefSeq ORF:</b>	1863 bp
<b>Locus ID:</b>	11001
<b>UniProt ID:</b>	<a href="#">O14975</a>
<b>Cytogenetics:</b>	15q21.2
<b>Domains:</b>	AMP-binding
<b>Protein Families:</b>	Transmembrane
<b>Protein Pathways:</b>	PPAR signaling pathway
<b>MW:</b>	70.1 kDa
<b>Gene Summary:</b>	The protein encoded by this gene is an isozyme of long-chain fatty-acid-coenzyme A ligase family. Although differing in substrate specificity, subcellular localization, and tissue distribution, all isozymes of this family convert free long-chain fatty acids into fatty acyl-CoA esters, and thereby play a key role in lipid biosynthesis and fatty acid degradation. This isozyme activates long-chain, branched-chain and very-long-chain fatty acids containing 22 or more carbons to their CoA derivatives. It is expressed primarily in liver and kidney, and is present in both endoplasmic reticulum and peroxisomes, but not in mitochondria. Its decreased peroxisomal enzyme activity is in part responsible for the biochemical pathology in X-linked adrenoleukodystrophy. Alternatively spliced transcript variants encoding different isoforms have been found for this gene. [provided by RefSeq, Apr 2009]

## Product images:



Double digestion of RC221033L1 using SgfI and MluI