

## Product datasheet for **RC221032**

### DEFB108B (NM\_001002035) Human Tagged ORF Clone

#### Product data:

**Product Type:** Expression Plasmids  
**Product Name:** DEFB108B (NM\_001002035) Human Tagged ORF Clone  
**Tag:** Myc-DDK  
**Symbol:** DEFB108B  
**Synonyms:** DEFB-8; hBD-8  
**Mammalian Cell Selection:** Neomycin  
**Vector:** pCMV6-Entry (PS100001)  
**E. coli Selection:** Kanamycin (25 ug/mL)  
**ORF Nucleotide Sequence:** >RC221032 representing NM\_001002035  
Red=Cloning site Blue=ORF Green=Tags(s)

TTTTGTAATACGACTCACTATAGGGCGGCCGGAATTCGTCGACTGGATCCGGTACCGAGGAGATCTGCC  
GCC**CGATCGCC**

ATGAGGATTGCTGCTCCTCTTCGCCATTTCTCTTTATGAGCCAAGTTCTACCAGCCAGGGGCAAAT  
TCAAGGAGATCTGTGAACGTCAAATGGCTCCTGTGGGACTTTTGCCTTGAACAGAAATCCATGTTGG  
GAGATGTTTAAATAGCCAACCTGCTGCCTGCCTCTGGGGCATCAACCAAGAATTGAGAGCACTACACCC  
AAAAAGGAC

**ACGCGT**ACGCGGCCGCTCGAGCAGAAACTCATCTCAGAAGAGGATCTGGCAGCAAATGATATCCTGGATT  
ACAAGGATGACGACGATAAGGTTTAA

**Protein Sequence:** >RC221032 representing NM\_001002035  
Red=Cloning site Green=Tags(s)  
MRIAVLLFAIFFMSQVLPARGKFKEICERPNGSCRDFCLETEIHVGRCLNSQPCLPLGHQPRIESTTP  
KKD

**TRTRPLEQKLISEEDLAANDILDYKDDDDKV**

**Chromatograms:** [https://cdn.origene.com/chromatograms/mk8001\\_e12.zip](https://cdn.origene.com/chromatograms/mk8001_e12.zip)

**Restriction Sites:** Sgfl-MluI



[View online »](#)

**Cloning Scheme:**


**ACCN:** NM\_001002035

**ORF Size:** 219 bp

**OTI Disclaimer:** The molecular sequence of this clone aligns with the gene accession number as a point of reference only. However, individual transcript sequences of the same gene can differ through naturally occurring variations (e.g. polymorphisms), each with its own valid existence. This clone is substantially in agreement with the reference, but a complete review of all prevailing variants is recommended prior to use. [More info](#)

**OTI Annotation:** This clone was engineered to express the complete ORF with an expression tag. Expression varies depending on the nature of the gene.

**Components:** The ORF clone is ion-exchange column purified and shipped in a 2D barcoded Matrix tube containing 10ug of transfection-ready, dried plasmid DNA (reconstitute with 100 ul of water).

- Reconstitution Method:**
1. Centrifuge at 5,000xg for 5min.
  2. Carefully open the tube and add 100ul of sterile water to dissolve the DNA.
  3. Close the tube and incubate for 10 minutes at room temperature.
  4. Briefly vortex the tube and then do a quick spin (less than 5000xg) to concentrate the liquid at the bottom.
  5. Store the suspended plasmid at -20°C. The DNA is stable for at least one year from date of shipping when stored at -20°C.

**RefSeq:** [NM\\_001002035.2](#)

**RefSeq Size:** 222 bp

**RefSeq ORF:** 222 bp

**Locus ID:** 245911

UniProt ID: [Q8NET1](#)

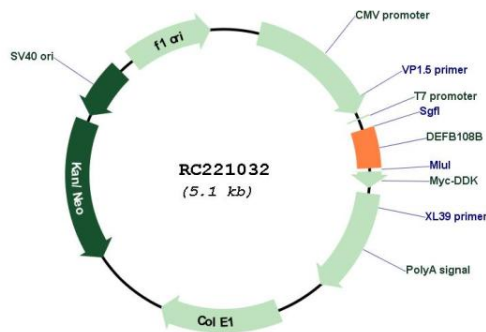
Cytogenetics: 11q13.4

Protein Families: Secreted Protein

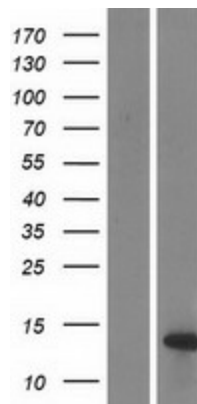
MW: 8.1 kDa

**Gene Summary:** Defensins form a family of antimicrobial and cytotoxic peptides made by neutrophils. Defensins are short, processed peptide molecules that are classified by structure into three groups: alpha-defensins, beta-defensins and theta-defensins. All beta-defensin genes are densely clustered in four to five syntenic chromosomal regions. A pseudogene of this gene has been found on chromosome 8. [provided by RefSeq, Oct 2014]

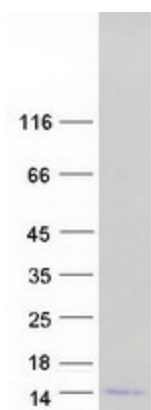
**Product images:**



Circular map for RC221032



Western blot validation of overexpression lysate (Cat# [LY424174]) using anti-DDK antibody (Cat# [TA50011-100]). Left: Cell lysates from untransfected HEK293T cells; Right: Cell lysates from HEK293T cells transfected with RC221032 using transfection reagent MegaTran 2.0 (Cat# [TT210002]).



Coomassie blue staining of purified DEFB108B protein (Cat# [TP321032]). The protein was produced from HEK293T cells transfected with DEFB108B cDNA clone (Cat# RC221032) using MegaTran 2.0 (Cat# [TT210002]).