

Product datasheet for RC221025

CACNA1C (NM_000719) Human Tagged ORF Clone

Product data:

Product Type:	Expression Plasmids
Product Name:	CACNA1C (NM_000719) Human Tagged ORF Clone
Tag:	Myc-DDK
Symbol:	CACNA1C
Synonyms:	CACH2; CACN2; CACNL1A1; CaV1.2; CCHL1A1; LQT8; TS; TS. LQT8
Mammalian Cell Selection:	Neomycin
Vector:	pCMV6-Entry (PS100001)
E. coli Selection:	Kanamycin (25 ug/mL)
ORF Nucleotide Sequence:	>RC221025 representing NM_000719 Red=Cloning site Blue=ORF Green=Tags(s)

TTTTGTAATACGACTCACTATAGGGCGGCCGGAATTCGTCGACTGGATCCGGTACCGAGGAGATCTGCC
GCC**CGATCGCC**

ATGGTCAATGAGAATACGAGGATGTACATTCCAGAGGAAAACCACCAAGTTCCAACATATGGGAGCCAC
GCCCCGCCATGCCAACATGAATGCCAATGCGGCAGCGGGGCTGGCCCTGAGCACATCCCCACCCGGG
GGCTGCCCTGTCGTGGCAGGCGGCCATCGACGCAGCCCGCAGGCTAAGCTGATGGGCAGCGCTGGCAAT
GCGACCATCTCCACAGTCAGCTCCACGCAGCGGAAGCGGCAGCAATATGGGAAACCAAGAAGCAGGGCA
GCACCACGGCCACACGCCCGCCCGAGCCCTGCTCTGCCTGACCTGAAGAACCCATCCGGAGGGCCTG
CATCAGCATTGTCGAATGGAAACCAATTTGAAATAATTATTTACTGACTATTTTGGCAATTGTGTGGCC
TTAGCGATCTATATCCCTTTCCAGAAGATGATCCAACGCCACCAATCCAACCTGGAACGAGTGGAAAT
ATCTCTTTCTCATAATTTTACGGTGGAAGCGTTTTTAAAAGTAATCGCCTATGGACTCCTCTTTACCC
CAATGCCTACCTCCGCAACGGCTGGAACCTACTAGATTTATAATTGTGGTTGTGGGGCTTTTTAGTGCA
ATTTTAGAACAAGCAACCAAGCAGATGGGGCAAACGCTCTCGGAGGGAAAGGGCCGGATTTGATGTGA
AGGCGTGAGGGCCTCCGCGTGTGCGCCCTGCGGCTGGTGTCCGGAGTCCCAAGTCTCCAGGTGGT
CCTGAATTCATCATCAAGGCCATGGTCCCCCTGCTGCACATCGCCCTGCTTGTGCTGTTGTGCATCATC
ATCTACGCCATCATCGGCTTGGAGCTCTCATGGGGAAGATGCACAAGACCTGTACAACCAGGAGGGCA
TAGCAGATGTTCCAGCAGAAGATGACCCTTCCCCTTGTGCGCTGGAAACGGGCCACGGCCGCGCAGTGCCA
GAACGGCACGGTGTGCAAGCCCGCTGGGATGGTCCCAAGCACGGCATCACCAACTTTGACAACCTTTGCC
TTCGCCATGCTCACGGTGTCCAGTGCATCACCATGGAGGGCTGGACGGAGCTGTACTGGGTCAATG
ATGCCGTAGGAAGGGACTGGCCCTGGATCTATTTTGTACTACTAATCATCATAGGGTCATTTTTTGTACT
TAACTTGGTTCTCGGTGTGCTTAGCGGAGATTTTCAAAGAGAGGGAGAAGGCCAAGGCCCGGGGAGAT
TTCCAGAAGCTGCGGGAGAAGCAGCAGCTAGAAGAGGATCTCAAAGGCTACCTGGATTGGATCACTCAGG
CCGAAGACATCGATCCTGAGAATGAGGACGAAGGCATGGATGAGGAGAAGCCCCGAAACATGAGCATGCC
CACCAGTGAGACCGAGTCCGTCAACACCGAAAACCTGGCTGGAGGTGACATCGAGGGAGAAAACCTGCGGG



[View online »](#)

GCCAGGCTGGCCACCGGATCTCCAAGTCAAAGTTCAGCCGCTACTGGCGCCGGTGAATCGGTTCTGCA
 GAAGGAAGTGCCGCGCCGAGTCAAGTCTAATGTCTTCTACTGGCTGGTATTTTCTGGTGTCTCTCAA
 CACGCTCACCATTTGCCTCTGAGCACTACAACCAGCCAACTGGCTCACAGAAGTCCAAGACACGGCAAAC
 AAGGCCCTGCTGGCCCTGTTACGGCAGAGATGCTCCTGAAGATGTACAGCCTGGGCCTGCAGGCCACT
 TCGTGTCCCTCTCAACCGCTTTGACTGCTTCGTGTGTGGCGGCATCCTGGAGACCATCCTGGTGA
 GACCAAGATCATGTCCCACTGGGCATCTCCGTGCTCAGATGCGTCCGGCTGTGAGGATTTTCAAGAT
 ACGAGGTACTGGAACCTTTGACCAACCTGGTGGCATCCTTGTGAACCTGTGCGCTCCATCGCCTCCC
 TGCTCCTTCTCCTTCTCCTTTCATCATCTTCTCCCTCCTGGGGATGCAGCTCTTGGAGGAAAGTT
 CAACTTTGATGAGATGCAGACCCGGAGGAGCACATTGATAAATTCCCCAGTCCCTCCTACTGTGTTT
 CAGATCCTGACCGGGGAGGACTGGAATTCGGTGTATGATGAGGATCATGGCTTATGGCGGCCCTCTT
 TTCCAGGGATGTTAGTCTGTATTTACTTTCATCATCCTCTTTCATCTGTGAAACTATATCCTACTGAATG
 GTTCTTGGCCATTGCTGTGGACAACCTGGCTGATGCTGAGAGCCTCACATCTGCCAAAAGGAGGAGGAA
 GAGGAGAAGGAGAGAAAGAAGCTGGCCAGGACTGCCAGCCAGAGAAGAAACAAGAGTTGGTGGAGAAGC
 CGGCAGTGGGGAAATCCAAGGAGGAGAAGATTGAGCTGAAATCCATCACGGCTGATGGAGAGTCTCCACC
 CGCCACCAAGATCAACATGGATGACCTCCAGCCCAATGAAAATGAGGATAAGAGCCCTACCCCAACCCA
 GAAACTACAGGAGAAGAGGATGAGGAGGAGCCAGAGATGCTGTGGCCCTCGCCACGACCACTCTCTG
 AGCTTACCTTAAGGAAAAGGCAGTGCCATGCCAGAAGCCAGCGGTTTTTTCATCTTACGCTCTAACAA
 CAGGTTTCGCCTCCAGTGCCACCGCATTGTCAATGACACGATCTTACCACCTGATCCTTCTTTCATT
 CTGCTCAGCAGCATTTCCCTGGCTGCTGAGGACCCGGTCCAGCACACCTCCTTCCAGAACCATATTTCTG
 TTTATTTTGATATTGTTTTTACCACATTTTACCATTGAAATGCTCTGAAGATGACTGCTTATGGGGC
 TTTCTTGACAAGGGTCTTTCTGCCGAACTACTTCAACATCCTGGACCTGCTGGTGGTCCAGCGTGTCC
 CTCATCTCCTTTGGCATCCAGTCCAGTCAATCAATGCTGTGAAGATCTTGGAGTCTGCGAGTACTCA
 GGCCCTGAGGGCCATCAACAGGGCCAAGGGCTAAAGCATGTGGTTCAAGTGTGTTTTGCTGCCATCCG
 GACCATCGGGAACATCGTGATTGTCACCACCCTGCTGCAGTTCATGTTTGCCTGCATCGGGCTCCAGCTC
 TTCAAGGGAAGCTGTACACCTGTTGACACAGTTCCAAGCAGACAGAGGGGAATGCAAGGGCAACTACA
 TCACGTACAAAGACGGGGAGGTTGACCACCCCATCATCCAACCCCGCAGCTGGGAGAACAGCAAGTTTGA
 CTTTGACAATGTTCTGGCAGCCATGATGGCCCTTTCACCGTCTCCACCTTGAAGGGTGGCCAGAGCTG
 CTGTACCCTCCATCGACTCCCACAGGAAGACAAGGGCCCATCTACAACCTACCGTGTGGAGATCTCCA
 TCTTCTTTCATCATCTACATCATCATCATCGCTTCTTTCATGATGAACATCTTCTGGGCTTCGTCATCGT
 CACCTTTCAGGAGCAGGGGAGCAGGAGTACAAGAAGTGTGAGCTGGACAAGAACCAGCAGCAGTGCCTG
 GAATACGCCCTCAAGGCCGGCCCTGCGGAGGTACATCCCAAGAACCAGCACCAGTACAAGTGTGGT
 ACGTGGTCAACTCCACTACTTCGAGTACTGATGTTCTGCTCATCCTGCTCAACACCATCTGCCTGGC
 CATGCAGCACTACGGCCAGAGCTGCCTGTTCAAAATCGCCATGAACATCCTCAACATGCTCTTACTGGC
 CTCTTACCGTGGAGATGATCCTGAAGCTCATTGCCTTCAAACCAAGCACTATTTCTGTGATGCATGGA
 ATACATTTGACGCCTTGATTGTTGTGGGTAGCATTGTTGATATAGCAATCACCGAGGTAACCCAGCTGA
 ACATACCAATGCTCTCCCTCTATGAACGCAGAGGAAAACCTCCCGCATCTCCATCACCTTCTTCCGCTG
 TTCCGGTTCATGCGTCTGGTGAAGCTGCTGAGCCGTGGGAGGGCATCCGGACGCTGCTGTGGACCTTCA
 TCAAGTCTTCCAGGCCCTGCCATGTGGCCCTCCTGATCGTGTGCTGTTCTTTCATCTACCGGGTGT
 CGGGATGCAGGTGTTTGGGAAAATTGCCCTGAATGATACCACAGAGATCAACCGGAACAACAATTTGAG
 ACCTTCCCCAGCCGTGCTGCTCCTTTCAGGTGTGCCACCGGGGAGGCTGGCAGGACATCATGCTGG
 CCTGCATGCCAGGCAAGAAGTGTGCCCCAGAGTCCGAGCCAGCAACAGCACGGAGGGTGAACACCCTG
 TGGTAGCAGCTTTGCTGTCTTACTTTCATCAGCTTCTACATGCTCTGTGCCTTCTGATCATCAACCTC
 TTTGTAGTGTGATCATGGACAACCTTGTACTACCTGACAAGGACTGGTCCATCCTTGGTCCCCACCACC
 TGGATGAGTTTAAAAGAATCTGGGCAGAGTATGACCTGAAGCCAAGGGTGTATCAAACACCTGGATGT
 GGTGACCTCCTCCGGCGGATTCAGCCGCCACTAGTTTTGGGAAGCTGTGCCCTACCCGCTGGCTTGC
 AAACGCCTGGTCTCCATGAACATGCCTCTGAACAGCGACGGGACAGTGTGTTCAATGCCACCCTGTTT
 CCCTGGTCAAGACGGCCCTGAGGATCAAACAGAAAGGAACTAGAACAAAGCCAATGAGGAGCTGCGGGC
 GATCATCAAGAAGATCTGGAAGCGGACCAGCATGAAGCTGCTGGACCAGGTGGTGGCCCTGCGAGTGT
 GATGAGGTACCGTTGGCAAGTTCTACGCCAGTTCCTGATCCAGGAGTACTTCCGGAAGTTCAAGAAGC
 GCAAAGAGCAGGGCCTTGTGGGCAAGCCCTCCCAGAGGAACGCGCTGTCTCTGCAGGCTGGCTTGCAC
 ACTGCATGACATCGGGCCTGAGATCCGACGGGCCATCTCTGGAGATCTCACCGCTGAGGAGGAGCTGGAC
 AAGCCATGAAGGAGGCTGTGTCGCTGCTTCTGAAGTACATCTTTCAGGAGGGCCGGTGGCCTGTTCC

GCAACCACGTCAGCTACTACCAAAGCGACGGCCGGAGCGCCTTCCCCAGACCTTCACTACTCAGCGCCC
GCTGCACATCAACAAGGCGGGCAGCAGCCAGGGCGACTGAGTCGCCATCCCACGAGAAGCTGGTGGAC
TCCACCTTCAACCCGAGCAGCTACTCGTCCACCGGCTCCAACGCCAATCAACAACGCCAACAACCCG
CCCTGGGTCGCCCTCCCTCGCCCCGCCGGTACCCAGCAGGTCAGCACTGTGGAGGGCCACGGGCCCC
CTTGTCCCCTGCCATCCGGGTGCAGGAGGTGGCGTGGAAGCTCAGCTCCAACAGGTGCCACTCCGGGAG
AGCCAGGCAGCCATGGCGGGTCAAGGAGACGCTCAGGATGAGATCTATGAAGTGAAGATGAACCATG
ACACGGAGGCTGCAGTGAGCCAGCCTGCTCTCCACAGAGATGCTCTCCTACCAGGATGACGAAAATCG
GCAACTGACGCTCCAGAGGAGGACAAGAGGGACATCCGGCAATCTCCGAGAGGGGTTTCTCCGCTCT
GCCTACTAGGTGGAAGGCCTCCTCCACCTGGAATGTCTGAAGCGACAGAAGGACCGAGGGGGAGACA
TCTCTCAGAAGACAGTCTTGCCTTGCATCTGGTTCATCATCAGGCATTGGCAGTGGCAGGCCTGAGCCC
CCTCCTCCAGAGAAGCCATTCCCTGCCTCATTCCCTAGGCCTTTTCCACCCACCAGCCACACCTGGC
AGCCGAGGCTGGCCCCACAGCCCGTCCCACCCTGCGGCTTGGGGGTGAGTCCAGTGAGAACTCA
ACAGCAGCTTCCATCCATCCACTGCGGCTCCTGGGCTGAGACCACCCCGTGGCGGGGCGCAGCGC
CGCCCGGAGAGTCCGGCCGTCTCCTCATGGTGCCAGCCAGGCTGGGGCCCCAGGAGGCAGTCCAC
GGCAGTGCCAGCAGCCTGGTGAAGCGGCTTTGATTTGAGAAGGACTGGGGCAGTTTGCTCAAGATCCCA
AGTTCATCGAGGTCACCACCAGGAGCTGGCCGACGCTGCGACATGACCATAGAGGAGATGGAGAGCGC
GGCCGACAACATCCTCAGCGGGGGCGCCCCACAGAGCCCAATGGCGCCCTTTACCTTTGTGAACTGC
AGGGACGCGGGGAGGACCGAGCCGGGGGGAAGAGGACGCGGGCTGTGTGCGCGCGGGGTGACCGGA
GTGAGGAGGAGCTCCAGGACAGCAGGCTACGTCAGCAGCCTG

ACGCGTACGCGGGCGCTCGAGCAGAACTCATCTCAGAAGAGGATCTGGCAGCAATGATATCCTGGATT
ACAAGGATGACGACGATAAGGTTAA

Protein Sequence: >RC221025 representing NM_000719
 Red=Cloning site Green=Tags(s)

MV NENT RMYI PEEN HQGS NYGSPR PAHAN MNANAAAGL APEHIPTPGAALSWQAAIDAARQA KLMGSAGN
 ATISTV SSTQRKRQ QYGKPKKQGSTTATRPPRALLCLTLKNPIRRACISIVEWKPF EIIILLTIFANCVA
 LAIYIPFPEDDSNATNSNLERVEYLFLLIIFTVEAFLKVIAYGLLFHPNAYLRNGWNLLDFIIVVGLFSA
 ILEQATKADGANALGGKAGFDVKALRAFRVLRPLRLVSGVPSLQVVLNSIIKAMVPLLHIALLVLFVII
 IYAIIGLELFMGKMHKTCYNQEGIADVPAEDDPSPCALETGHGRQCQNGTVCKPGWDGPKHGITNFDNFA
 FAMLTVFQCITMEGWTDVLYWVNDAVGRDWPWIYFVTLIIIGSFFVLNLVLGVLSGEFSKEREKAKARGD
 FQKLRKQQL EEDLKG YLDWITQAEDIDPENEDEGMDEEKPRNMSMPTSETESVNTENVAGGDIEGENCEG
 ARLAHRISKSKFSRYWRRWNRFCRRKCAAVKSNVFWLVIFLVFLNTLTIASEHYNQPNWLTEVQDTAN
 KALLALFTAEMLLKMYSLGLQAYFVSLFNRFDCFVVGGLIETILVETKIMSPLGISVLRVLRLLRIFKI
 TRYWNSL SNLVA LLNSVRSIASLLLLLFLFIIIFSLGMLFGGKFNDEMQRTRSTFDNFPQSLLTVF
 QILTGEDWNSVMYDGMAYGGPSFPGMLVCIYFIIILFICGNYILLNVFLAIAVDNLADAESL TSAQKEE
 EEKERKKLARTASPEKKQELVEKPAVGESKEEKIELKSITADGESPPATKINMDDLQPNENEDKSPYNP
 ETTGEEDEEPEMPVGRPRPLSELHLKEKAVMPPEASAFFIFSSNNRFRQLQCHRIVNDTIFTNLILFFI
 LLSSISLAAEDPVQHTSFRNHILFYFDIVFTTIFTIEIALKMTAYGAFLHKGSFCRNYFNILDLLVVSVS
 LISFGIQSSAINVVKILRVLRLRPLRAINRAKGLKHVVQCVFVAIRTIGNIVIVITLLQFMFACIGVQL
 FKGLYTCSDSSKQTEAECKGNITYYKDGVDHPIIQPRSWENSKFDFDNVLAAMMALFTVSTFEGWPEL
 LYRSIDSHTEKGIYNYRVEISIFFIIYIIIIAFFMMNIFVGFVIVTFQEQGEQEKNCELDKNQRQCV
 EYALKARPLRRYIPKNQHQYKVVYVNSTYFEYLMFVILLNNTICLAMQHYGQSCLFKIAMNINMLFTG
 LFTVEMILKLI AFKPKHYFCDAWNTFDALIVVGSIVDIAITEVNP AEHTQCSPSMNAEENSRSITFFRL
 FRVMRLVKLLSRGEGIRTLWTFIKSFQALPYVALLIVMLFFIYAVIGMQVFGKIALNDTTEINRNNNFQ
 TFPQAVLLLFRCATGEAWQDIMLACMPGKKCAPESEPSNSTEGETPCGSSFAVFYFISFYMLCAFLIINL
 FVAVIMDNFDYLTRDWSILGPHHLDEFKRIWAEYDPEAKGRIKHLDVVTLLRRIQPPLGFGKLCPHRVAC
 KRLVSMNPLNSDGTVMFNATL FALVRTALRIKTEGNLEQANEELRAIIKKIWKRTSMKLLDQVVPAGD
 DEVTVGKFYATFLIQEYFRKFKRKEQGLVGKPSQRNALSLQAGLRTLHDIGPEIRRAISGDLTAEELD
 KAMKEAVSAASEDDIFRRAGGLFGNHVSYYSQDGRSAFPQTFTTQRPLHINKAGSSQGDTESPSHEKLV
 STFTPSSYSSTGSNANINNANTALGRLPRPAGYPSTVSTVEGHGPPLSPAIRVQEVAVKLSNRCHSRE
 SQAAMAGQEETSQDEIYEVKMNHDEACSEPSLLSTEMLSYQDDENRQLTLPEEDKRDIRQSPKRGFLRS
 ASLGRRAFHFLECLKRQKDRGGDISQKTVLPLHLVHHQALAVAGLSPLLQRSHSPASFPRPFATPPATPG
 SRGWPPQVPVTLRLEGVESSEKLNSSFPSIHCGSWAETTPGGGSSAARRVSRVSLMVPVQAGAPGRQFH
 GSASSLVEAVLISEGLGQFAQDPKIEVTTQELADACDMTIEEMESAADNLSGGAPQSPNGALLPFVNC
 RDAGQDRAGGEEDAGCVRARGRPSEEELQDSRVVYSSL

TRTRPLEQKLISEEDLAANDILDYKDDDDKV

Restriction Sites: SgfI-MluI

Cloning Scheme:

ACCN: NM_000719

ORF Size: 6414 bp

OTI Disclaimer: Due to the inherent nature of this plasmid, standard methods to replicate additional amounts of DNA in E. coli are highly likely to result in mutations and/or rearrangements. Therefore, OriGene does not guarantee the capability to replicate this plasmid DNA. Additional amounts of DNA can be purchased from OriGene with batch-specific, full-sequence verification at a reduced cost. Please contact our customer care team at custsupport@origene.com or by calling 301.340.3188 option 3 for pricing and delivery.

The molecular sequence of this clone aligns with the gene accession number as a point of reference only. However, individual transcript sequences of the same gene can differ through naturally occurring variations (e.g. polymorphisms), each with its own valid existence. This clone is substantially in agreement with the reference, but a complete review of all prevailing variants is recommended prior to use. [More info](#)

OTI Annotation: This clone was engineered to express the complete ORF with an expression tag. Expression varies depending on the nature of the gene.

Components: The ORF clone is ion-exchange column purified and shipped in a 2D barcoded Matrix tube containing 10ug of transfection-ready, dried plasmid DNA (reconstitute with 100 ul of water).

- Reconstitution Method:**
1. Centrifuge at 5,000xg for 5min.
 2. Carefully open the tube and add 100ul of sterile water to dissolve the DNA.
 3. Close the tube and incubate for 10 minutes at room temperature.
 4. Briefly vortex the tube and then do a quick spin (less than 5000xg) to concentrate the liquid at the bottom.
 5. Store the suspended plasmid at -20°C. The DNA is stable for at least one year from date of shipping when stored at -20°C.

RefSeq: [NM_000719.7](#)

RefSeq Size: 8464 bp

RefSeq ORF: 6417 bp

Locus ID: 775

UniProt ID: [Q13936](#)

Cytogenetics: 12p13.33

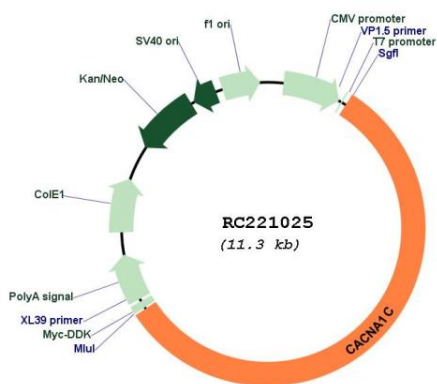
Protein Families: Druggable Genome, Ion Channels: Calcium, Transmembrane

Protein Pathways: Alzheimer's disease, Arrhythmogenic right ventricular cardiomyopathy (ARVC), Calcium signaling pathway, Cardiac muscle contraction, Dilated cardiomyopathy, GnRH signaling pathway, Hypertrophic cardiomyopathy (HCM), Long-term potentiation, MAPK signaling pathway, Type II diabetes mellitus, Vascular smooth muscle contraction

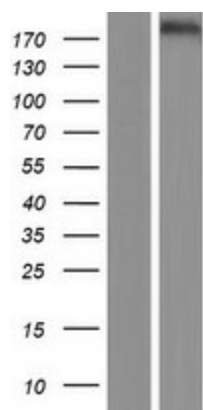
MW: 239.5 kDa

Gene Summary: This gene encodes an alpha-1 subunit of a voltage-dependent calcium channel. Calcium channels mediate the influx of calcium ions into the cell upon membrane polarization. The alpha-1 subunit consists of 24 transmembrane segments and forms the pore through which ions pass into the cell. The calcium channel consists of a complex of alpha-1, alpha-2/delta, beta, and gamma subunits in a 1:1:1:1 ratio. There are multiple isoforms of each of these proteins, either encoded by different genes or the result of alternative splicing of transcripts. The protein encoded by this gene binds to and is inhibited by dihydropyridine. Alternative splicing results in many transcript variants encoding different proteins. Some of the predicted proteins may not produce functional ion channel subunits. [provided by RefSeq, Oct 2012]

Product images:



Circular map for RC221025



Western blot validation of overexpression lysate (Cat# [LY424548]) using anti-DDK antibody (Cat# [TA50011-100]). Left: Cell lysates from untransfected HEK293T cells; Right: Cell lysates from HEK293T cells transfected with RC221025 using transfection reagent MegaTran 2.0 (Cat# [TT210002]).