

Product datasheet for **RC221018**

NUMB (NM_001005744) Human Tagged ORF Clone

Product data:

Product Type:	Expression Plasmids
Product Name:	NUMB (NM_001005744) Human Tagged ORF Clone
Tag:	Myc-DDK
Symbol:	NUMB
Synonyms:	C14orf41; c14_5527; S171
Mammalian Cell Selection:	Neomycin
Vector:	pCMV6-Entry (PS100001)
E. coli Selection:	Kanamycin (25 ug/mL)



[View online »](#)

ORF Nucleotide Sequence:

>RC221018 representing NM_001005744
 Red=Cloning site Blue=ORF Green=Tags(s)

TTTTGTAATACGACTCACTATAGGGCGGCCGGAATTCGTGACTGGATCCGGTACCGAGGAGATCTGCC
 GCC**CGCATCGCC**

ATGAACAAATTACGGCAAAGTTTTAGGAGAAAGAAGGATGTTTATGTTCCAGAGGCCAGTCTCCACATC
 AGTGGCAGACAGATGAAGAAGGCGTTTCGCACCGGAAAATGTAGCTTCCCGTTAAGTACCTTGCCATGT
 AGAAGTTGATGAATCAAGAGGAATGCACATCTGTGAAGATGCTGTAAAAAGATTGAAAGCTGAAAGGAAG
 TTCTTCAAAGGCTTCTTTGGAAAACTGAAAAGAAAGCAGTTAAAGCAGTTCTGTGGGTCTCAGCAGATG
 GACTCAGAGTTGTGGATGAAAAACTAAGGACCTCATAGTTGACCAGACGATAGAGAAAGTTTCTTCTG
 TGCCCCAGACAGGAACCTTGTAGAGCCTTTTCTACATATGCCGTGATGGCACCCTCGTCGTGGATC
 TGTCACTGCTTTCATGGCTGTCAAGGACACAGGTGAAAGGTTGAGCCATGCAGTAGGCTGTGCTTTTGCAG
 CCTGTTTAGAGCGCAAGCAGAAGCGGGAGAAGGAATGTGGAGTACTGCTACTTTTGTGCTAGTCGGAC
 CACTTTTACAAGAGAAGGATCATTCCGTGTCACAACAGCCACTGAACAAGCAGAAAGAGAGGAGATCATG
 AAACAAATGCAAGATGCCAAGAAAGCTGAAACAGATAAGATAGTCGTTGGTTTCATCAGTTGCCCTGGCA
 ACACTGCCCATCCCCATCCTCTCCACCTCTCTACTTCTGATGCCACGACCTCTCTGGAGATGAACAA
 TCCTCATGCCATCCCACGCCGATGCTCCAATTGAACAGCTTGTGCGCAAGGCTCTTTCGAGGTTTT
 CCTGCTCTTAGCCAGAAGATGTCACCCTTTAAACGCCAATATCCCTACGCATCAATGAGTTGCCTTCCA
 CTATGCAGAGGAAGACTGATTTCCCATTAATAATGCAGTGCCAGAAGTAGAAGGGGAGGCAGAGAGCAT
 CAGCTCCCTGTGCTCACAGATCACCAATGCCTTACGACACCTGAGGACCCCTTCTCATCTGCTCCGATG
 ACCAAACAGTGACAGTGGTGGCACCACAATCTCTACCTTCCAAGGGACCGAGTGGGGTCAATCTTCTG
 GTGCTGCTCTCCAGTCTCTTCCAGGCGGTATAGAGCTACTCCCTCTGAGGCCAGTGGTTAGA
 AGAGGTGCTAAGAGCGTCCGGCTCAGCAGCCCCAGGCCCTCAGCTGCTCCTCTGCAGCCAGTTCTCCAG
 CCTCTCCACCCACTGCCATCTCCAGCCAGCATCACCTTTCCAAGGAATGCATTCTCTCACCTCTCAGC
 CTGTGCCAGTGGGTGGTCCCAGCCCTGCAACCAGCCTTTGTCCCTGCCAGTCTATCTGTGGCCAA
 TGGAAATGCCCTATCCAGCCCTAATGTGCTGTGGTGGGCATCACTCCCTCCCAGATGGTGGCCAAACGTA
 TTTGGCACTGCAGGCCACCCTCAGGCTGCCATCCCCATCAGTCAACCAGCCTGGTCAAGCAGCAGACAT
 TCCCTCACTACGAGGCAAGCAGTGTACCACCAGTCCCTCTTTAAGCCTCTGCTCAGCACCTCAACGG
 TTCTGCAGCTTTCATGGTGTAGATGATGGCAGGTTGGCCTCAGCAGACAGGCATACAGAGGTTCTTACA
 GGCACCTGCCAGTGGATCCTTTTGAAGCCAGTGGGCTGCATTAGAAAATAAGTCCAAGCAGCGTACTA
 ATCCCTCCCTACCAACCCTTTCTCCAGTGACTTACAGAAGACGTTTGAATTGAACT

ACGCGTACGCGGCCGCTCGAGCAGAAACTCATCTCAGAAGAGGATCTGGCAGCAAATGATATCCTGGATT
 ACAAGGATGACGACGATAAGGTTTAA

Protein Sequence:

>RC221018 representing NM_001005744
 Red=Cloning site Green=Tags(s)

MNKLRSFRRKDVVYVPEASRPHQWQTDDEEVRTGKCSFPVKYLGHVEVDES RGMHICEDAVKRLKAERK
 FFKGFFGKTGKKAVKAVLWVSADGLRVVDEKTKDLIVDQTIIEKVSFCAPDRNFDRAFSYICRDGTTRRWI
 CHCFMAVKDTERL SHAVGCAFAACLERKQKREKECGVTATFDASRTTFTREGSFRVTTATEQAEREEIM
 KQMQDAKKAETDKIVVGSSVAPGNTAPSPSSPTSPTS DATTSLEMNPHAI PRRHAPIEQLARQGSFRGF
 PALSQKMSPFKRQLSLRINELPSTMQRKTD FPIKNAVPEVEGEAESISSLCSQITNAFSTPEDPFSAPM
 TKPVTVVAPQSPTFQGT EWGQSSGAASPLGFQAGHRRTPSEADRWLEEVSKSVRAQQPQASAPLQPV LQ
 PPPPTAISQPASPFQGN AFLTSQVPVGVV PALQPAFVPAQSYPVANGMPYPAPNVVVGITPSQMVANV
 FGTAGHPQAAPHQSPSLVRQQTFFHYEASSATTSPFFKPPAQHLNGSAAFNGVDDGRLASADRHTVEPT
 GTPCPVDPFEAQWAALENKSKQRTNPSPNPFSSDLQKTFEIEL

TRTRPLEQKLISEEDLAANDILDYKDDDDKV

Chromatograms:

https://cdn.origene.com/chromatograms/mk6507_f06.zip

Restriction Sites: SgfI-MluI

Cloning Scheme:



ACCN: NM_001005744

ORF Size: 1809 bp

OTI Disclaimer: The molecular sequence of this clone aligns with the gene accession number as a point of reference only. However, individual transcript sequences of the same gene can differ through naturally occurring variations (e.g. polymorphisms), each with its own valid existence. This clone is substantially in agreement with the reference, but a complete review of all prevailing variants is recommended prior to use. [More info](#)

OTI Annotation: This clone was engineered to express the complete ORF with an expression tag. Expression varies depending on the nature of the gene.

Components: The ORF clone is ion-exchange column purified and shipped in a 2D barcoded Matrix tube containing 10ug of transfection-ready, dried plasmid DNA (reconstitute with 100 ul of water).

- Reconstitution Method:
1. Centrifuge at 5,000xg for 5min.
 2. Carefully open the tube and add 100ul of sterile water to dissolve the DNA.
 3. Close the tube and incubate for 10 minutes at room temperature.
 4. Briefly vortex the tube and then do a quick spin (less than 5000xg) to concentrate the liquid at the bottom.
 5. Store the suspended plasmid at -20°C. The DNA is stable for at least one year from date of shipping when stored at -20°C.

RefSeq: [NM_001005744.1](#), [NP_001005744.1](#)

RefSeq Size: 3503 bp

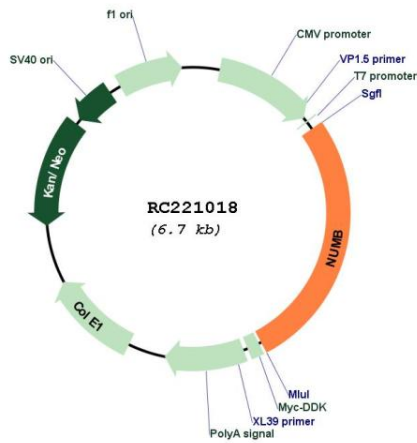
RefSeq ORF: 1812 bp

Locus ID: 8650

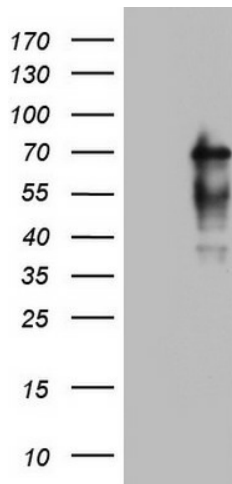
UniProt ID: [P49757](#)
Cytogenetics: 14q24.2-q24.3
Protein Pathways: Notch signaling pathway
MW: 65.7 kDa

Gene Summary: The protein encoded by this gene plays a role in the determination of cell fates during development. The encoded protein, whose degradation is induced in a proteasome-dependent manner by MDM2, is a membrane-bound protein that has been shown to associate with EPS15, LNX1, and NOTCH1. Alternative splicing results in multiple transcript variants. [provided by RefSeq, Feb 2016]

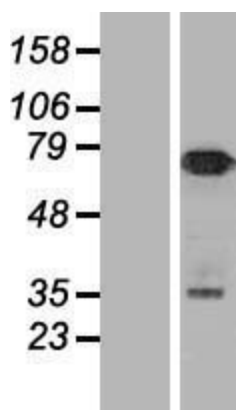
Product images:



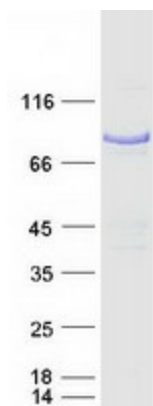
Circular map for RC221018



HEK293T cells were transfected with the pCMV6-ENTRY control (Cat# [PS100001], Left lane) or pCMV6-ENTRY NUMB (Cat# RC221018, Right lane) cDNA for 48 hrs and lysed. Equivalent amounts of cell lysates (5 ug per lane) were separated by SDS-PAGE and immunoblotted with anti-NUMB (Cat# [TA802138]). Positive lysates [LY423644] (100ug) and [LC423644] (20ug) can be purchased separately from OriGene.



Western blot validation of overexpression lysate (Cat# [LY423644]) using anti-DDK antibody (Cat# [TA50011-100]). Left: Cell lysates from untransfected HEK293T cells; Right: Cell lysates from HEK293T cells transfected with RC221018 using transfection reagent MegaTran 2.0 (Cat# [TT210002]).



Coomassie blue staining of purified NUMB protein (Cat# [TP321018]). The protein was produced from HEK293T cells transfected with NUMB cDNA clone (Cat# RC221018) using MegaTran 2.0 (Cat# [TT210002]).