

Product datasheet for **RC221014**

EOMES (NM_005442) Human Tagged ORF Clone

Product data:

Product Type:	Expression Plasmids
Product Name:	EOMES (NM_005442) Human Tagged ORF Clone
Tag:	Myc-DDK
Symbol:	EOMES
Synonyms:	TBR2
Mammalian Cell Selection:	Neomycin
Vector:	pCMV6-Entry (PS100001)
E. coli Selection:	Kanamycin (25 ug/mL)



[View online »](#)

**ORF Nucleotide
Sequence:**

>RC221014 representing NM_005442
 Red=Cloning site Blue=ORF Green=Tags(s)

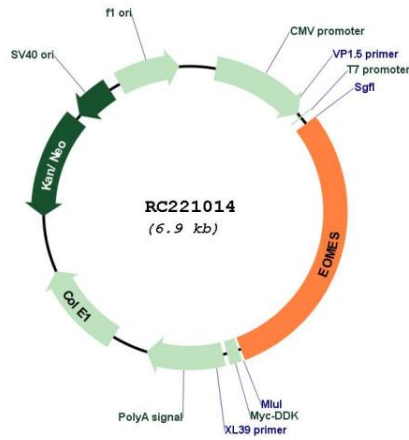
TTTTGTAATACGACTCACTATAGGGCGGCCGGAATTCGTCGACTGGATCCGGTACCGAGGAGATCTGCC
 GCC**CGGATCGCC**

ATGCAGTTAGGGGAGCAGCTCTTGGTGAGCTCAGTGAACCTGCCTGGCGGCACTTCTACCCGCTGGAGA
 GTGCGCGAGGCGGCAGCGCGGGAGCGCTGGCCACCTCCCAGCGCGGCCCTCTCCTCAGAAGTTGGA
 CTTAGACAAAGCGTCCAAGAAGTTTTCCGGCAGTCTCTCCTGCGAGGCGGTGAGCGGGGAGCCCGCAGCC
 GCCAGCGCAGGGGCCCGCGGCCATGCTTAGTGACACCGACGCCGGGACGCATTTGCCAGCGCTGCGG
 CAGTGGCCAAGCCGGGGCCCCGGACGGCCGAAGGGCTCCCCCTGCGGGGAGGAGGAGCTGCCCTCCGC
 CGCTGCAGCCGCCCGCCGCCCGCGGCTGCGGCCACTGCGCGCTACTCCATGGACAGCCTGAGC
 TCCGAGCGGTACTACCTCAGTCCCCGGTCTCAGGGGTGGAGCTGGTGCGCCCTGCTCACTTTCC
 CGTACCAGGCGGGGCTGGGGCGCCCCACGGACCTGTGTACCCGGCTCCTAACGGGGCGCGCTACCCCTA
 CGGCTCCATGCTCCCCCGCGGCTTCCCCGCGGCTGTGTGCCACCCGGGAGGGCGCAGTTTCGCCCCA
 GGAGCCGGTGCAGGCAGTGGCGCGGGCGGTAGCAGCGCGGGGGCGGGCGCCCGGCACCTATCAGTACA
 GCCAGGGGGTCCGCTCTACGGGCCGTACCCTGGAGCCGACGCGCGGGATCTTGCGGAGGACTGGGGG
 CCTGGGGTTCCAGTTCTGGCTTCCGTGCCACGTCTACCTGTGCAACCGGCCTCTGTGGCTCAAATTC
 CACCGCCACAAACTGAGATGATCATTACGAAACAGGGCAGGCGCATGTTTCTTTCTTGAGCTTCAACA
 TAAACGGACTCAATCCCCTGCCACTACAATGTGTTTCGTAGAGGTGGTCTGGCGGACCCCAACCACTG
 GCGCTTCCAGGGGGCAAATGGGTGACCTGTGGCAAAGCCGACAATAACATGCAGGGCAACAAAATGAT
 GTTCACCCAGAGTCTCCTAATACTGGTCCCCTGGATGAGACAGGAGATTTTCATTCGGGAAATTAAC
 TCACCAATAACAAAGCCGAAATAACAACAACACCCAGATGATAGTCTTACAATCCTTACACAAATACCA
 ACCCCGACTGCATATTGTTGAAGTTACAGAGGATGGCGTGGAGGACTTGAATGAGCCCTCAAAGACCCAG
 ACTTTTACCTTCTCAGAAACGCAATTCATTGCACTGACTGCCTACCAAAACACCGATTAATCAACTAA
 AGATTGATCATAACCCCTTTGCAAAAGGCTTACAGAGCAACTATGATTCAATCCCATCAGATTGTCCCTGG
 AGGTGGTACGGCGTTCAATCCTTCTTCCCGAGCCCTTGTCAACACTTACCTCAAGCCCGCTATTAT
 AATGGCGAGAGAACCGTGCACAGACCAACGGCCTCCTTTCACCCCAACAGAGCGAAGAGGTGGCAACC
 CTCCCCAGCGGTGGCTTGTACGCCTGTCCAGCAACCTGGGACCAACAACTAGACATCAGTTTCTATGA
 ATCTGAATATACTTCTAGCACATTGCTCCCATATGGCATTAAATCCTTGCCCTTCAGACATCCCATGCC
 CTGGGGTATTACCCAGACCAACCTTCTGCAATGGCAGGGTGGGAGGTGAGGTTCTTACCAGAGGA
 AGATGGCAGCTGGACTACCATGGACCTCCAGAACAAGCCCACTGTGTTCTCTGAAGATCAGCTCTCCAA
 GGAGAAAGTAAAAGAGGAAATTGGCTCTTCTTGGATAGAGACACCCCTTCCATCAAATCTCTAGATTCC
 AATGATTACAGGATATACACCAGTGCTTGAAGCGAAGGCGGCTGTCTCCTAGCAACTCCAGTAATGAAA
 ATTCACCTCCATAAAGTGTGAGGACATTAATGCTGAAGAGTATAGTAAAGACACCTCAAAGGCATGGG
 AGGGTATTATGCTTTTACACAACCTCC

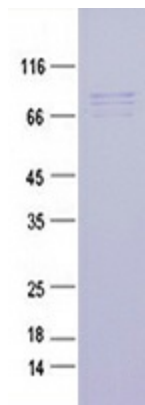
ACGCGTACGCGGGCGCTCGAGCAGAACTCATCTCAGAAGAGGATCTGGCAGCAAATGATATCCTGGATT
 ACAAGGATGACGACGATAAGGTTTAA

Components:	The ORF clone is ion-exchange column purified and shipped in a 2D barcoded Matrix tube containing 10ug of transfection-ready, dried plasmid DNA (reconstitute with 100 ul of water).
Reconstitution Method:	<ol style="list-style-type: none">1. Centrifuge at 5,000xg for 5min.2. Carefully open the tube and add 100ul of sterile water to dissolve the DNA.3. Close the tube and incubate for 10 minutes at room temperature.4. Briefly vortex the tube and then do a quick spin (less than 5000xg) to concentrate the liquid at the bottom.5. Store the suspended plasmid at -20°C. The DNA is stable for at least one year from date of shipping when stored at -20°C.
RefSeq:	NM_005442.4
RefSeq Size:	2756 bp
RefSeq ORF:	2061 bp
Locus ID:	8320
UniProt ID:	O95936
Cytogenetics:	3p24.1
Domains:	T-box
Protein Families:	Embryonic stem cells, ES Cell Differentiation/IPS, Transcription Factors
MW:	72.6 kDa
Gene Summary:	This gene belongs to the TBR1 (T-box brain protein 1) sub-family of T-box genes that share the common DNA-binding T-box domain. The encoded protein is a transcription factor which is crucial for embryonic development of mesoderm and the central nervous system in vertebrates. The protein may also be necessary for the differentiation of effector CD8+ T cells which are involved in defense against viral infections. A similar gene disrupted in mice is shown to be essential during trophoblast development and gastrulation. Alternative splicing results in multiple transcript variants. [provided by RefSeq, May 2013]

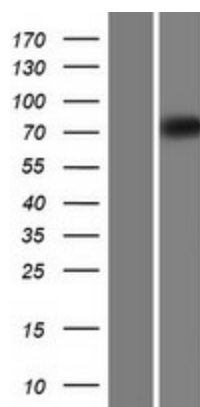
Product images:



Circular map for RC221014



Coomassie blue staining of purified EOMES protein (Cat# [TP321014]). The protein was produced from HEK293T cells transfected with EOMES cDNA clone (Cat# RC221014) using MegaTran 2.0 (Cat# [TT210002]).



Western blot validation of overexpression lysate (Cat# [LY401670]) using anti-DDK antibody (Cat# [TA50011-100]). Left: Cell lysates from untransfected HEK293T cells; Right: Cell lysates from HEK293T cells transfected with RC221014 using transfection reagent MegaTran 2.0 (Cat# [TT210002]).