

Product datasheet for **RC221011**

OSBPL9 (NM_148906) Human Tagged ORF Clone

Product data:

Product Type:	Expression Plasmids
Product Name:	OSBPL9 (NM_148906) Human Tagged ORF Clone
Tag:	Myc-DDK
Symbol:	OSBPL9
Synonyms:	ORP-9; ORP9
Mammalian Cell Selection:	Neomycin
Vector:	pCMV6-Entry (PS100001)
E. coli Selection:	Kanamycin (25 ug/mL)



[View online »](#)

ORF Nucleotide Sequence:

>RC221011 representing NM_148906
 Red=Cloning site Blue=ORF Green=Tags(s)

TTTTGTAATACGACTCACTATAGGGCGGCCGGAATTCGTCGACTGGATCCGGTACCGAGGAGATCTGCC
 GCC**CGGATCGCC**

ATGGTAGAATCAATTAACACTGCATTGTGTGCTGCAGATTGCCAAAGACCAGAGTAATCGCGAGAAGC
 ACGCAGATGGAATGATAAGTACTATTAATCCCGTAGATGCAATATCAACCTAGTCCTTTGGAACCTGT
 GATCAGCACAATGCCTTCCAGACTGTGTACCTCCAGAACCTGTTCAAGTTGTGAAGTCAGAGCAGCGT
 CCATCTTCCCTACCAGTTGGACCTGTGTGGTACCTGGGACATCATCAGACTCCTACACCAAATAGTA
 CAGGCAGTGGCCATTACCACCGAGTAGCAGTCTCACTTCTCCAAGCCACGTGAATTGTCTCCAAATAC
 AGTCCCAGAGTTCTTACTCCAGCAGTGAAGATGAATTTATGATGCTGATGAATCCATCAAAGTGGC
 TCATCCCCAAAGCGTTAATAGATTCTTCTGGATCTGCCTCAGTCTGACACACAGCAGCTCGGGAATA
 GTCTAAAACGCCAGATACCACAGAATCACTTAATTCTTCTTGTCCAATGGAACAAGTGTGCTGACCT
 GTTTGATTACATGATGACAGAGATGATGATGCGGAGGCAGGGTCTGTGGAGGAGACAAGAGCGTTATC
 ATGCATCTCTTGTGCGAGTTAGACTTGAATGGATCTTACTAAGGTAGTCTTCCAACGTTTATCTTG
 AAAGAAGATCTCTTTAGAAATGTATGCAGACTTTTTTGACATCCGGACCTGTTTGTGAGCATTAGTGA
 CCGAAGGATCCCAAGGATCGAATGTTTCAAGTTGTGAAATGGTACCTCTCAGCCTTTCATGCGGGAAGG
 AAAGGATCAGTTGCCAAAAGCCATAACAATCCCATTTGGGCGAGATTTTTCAGTGTCAATTGGACATTAC
 CAAATGATACTGAAGAGAACACAGAAGTTCAGAAAGGACAGTTCCTGGGTTTCCAAAACAGTGT
 AACATTTGTGGCTGAGCAGGTTTCCCATCATCCACCCATTTACGCTTTTATGCTGAGTGTTTTAAACAG
 AAGATACAATTAATGCTCATATCTGGACCAAAATCAAAATTCCTTGGGATGTCAATGGGATGCACAACA
 TAGGGCAGGGCTGTGTCTCATGTCTAGACTATGATGAACATTACATTTCCATTTCCCAATTCGATGG
 AAGGCTATCTCACAGTGCCTGGGTGGAATTAGGAGGAGAATGCAATATTAATTGTTCCAAAACAGGC
 TATAGTGCAAATATCATCTTCCACACTAAACCCTTCTATGGGGCAAGAAGCACAGAATTACTGCCGAGA
 TTTTTTCTCCAAATGACAAGAAGTCTTTTTGCTCAATTGAAGGGGAATGGAATGGTGTGATGATGCAAA
 ATATGCAACAGGGGAAAATACAGTCTTTGTAGATACCAAGAAGTTGCCTATAATCAAGAAGAAAGTGAAG
 AAGTTGGAAGATCAGAACGAGTATGAATCCCGCAGCCTTTGGAAGGATGCTCACTTTCAACTTAAAAATCA
 GAGACATTGATGCAGCAACTGAAGCAAAGCACAGGCTTGAAGAAAGACAAAGAGCAGAAGCCCGAGAAAG
 GAAGGAGAAGGAAATTCAGTGGGAGACAAGGTTATTTTCATGAAGATGGAGAATGCTGGGTTTATGATGAA
 CCATTACTGAAACGTCTTGGTGTGCCAAGCAT

ACGCGTACGCGGCCGCTCGAGCAGAAACTCATCTCAGAAGAGGATCTGGCAGCAAATGATATCCTGGATT
 ACAAGGATGACGACGATAAGGTTTAA

Protein Sequence:

>RC221011 representing NM_148906
 Red=Cloning site Green=Tags(s)

MVESIKHCIVLLQIAKDQSNAEKHADGMISTINPVDAIYQPSPLEPVIISTMPSQTVLPPEPVQLCKSEQR
 PSSLPVGPVLA TLGHHQTPN STGSGHSPSSSLTSPSHVNLSPNTVPEFSYSSSEDEFYDADEFHQSG
 SSPKRLIDSSGSASV LTHSSGNSLKRPTTESLNSLSNGTSDADLFD SHDDRDDDAEAGSVEEHKSVI
 MHLLSQVRLGMDLTKVVLPTFILERRS LLEMYADFFAHPDLFVSI SDQKDPKDRMVQVVKWYL SAFHAGR
 KGSVAKKPYNPILGEIFQCHWTL PNDTEENTELVSEGPVPWVSKNSVTFVAEQVSHHPPISAFYAECFNK
 KIQFNAHIWTKSKFLGMSIGVHNI GQCVSCLDYDEHYILTFPNGYGRSILTPVWVWLGECNINCSKTG
 YSANIIFHTKPFYGGKKHRITAEIFSPNDKKSFC SIEGEWNGV MYAKYATGENTVFVDTKKLPIIKKKVR
 KLEDQNEYESRSLWKDVTFNLKIRDIDAATEAKHRL EERQRAEARERKEKEIQWETRLFHEDGECWVYDE
 PLLKRLGAAKH

TRTRPLEQKLISEEDLAANDILDYKDDDDKV

Chromatograms:

https://cdn.origene.com/chromatograms/mg3434_f09.zip

Restriction Sites:

Sgfl-Mlul

Cloning Scheme:


ACCN: NM_148906

ORF Size: 1713 bp

OTI Disclaimer: The molecular sequence of this clone aligns with the gene accession number as a point of reference only. However, individual transcript sequences of the same gene can differ through naturally occurring variations (e.g. polymorphisms), each with its own valid existence. This clone is substantially in agreement with the reference, but a complete review of all prevailing variants is recommended prior to use. [More info](#)

OTI Annotation: This clone was engineered to express the complete ORF with an expression tag. Expression varies depending on the nature of the gene.

Components: The ORF clone is ion-exchange column purified and shipped in a 2D barcoded Matrix tube containing 10ug of transfection-ready, dried plasmid DNA (reconstitute with 100 ul of water).

- Reconstitution Method:**
1. Centrifuge at 5,000xg for 5min.
 2. Carefully open the tube and add 100ul of sterile water to dissolve the DNA.
 3. Close the tube and incubate for 10 minutes at room temperature.
 4. Briefly vortex the tube and then do a quick spin (less than 5000xg) to concentrate the liquid at the bottom.
 5. Store the suspended plasmid at -20°C. The DNA is stable for at least one year from date of shipping when stored at -20°C.

RefSeq: [NM_148906.1](#), [NP_683704.1](#)

RefSeq Size: 2840 bp

RefSeq ORF: 2160 bp

Locus ID: 114883

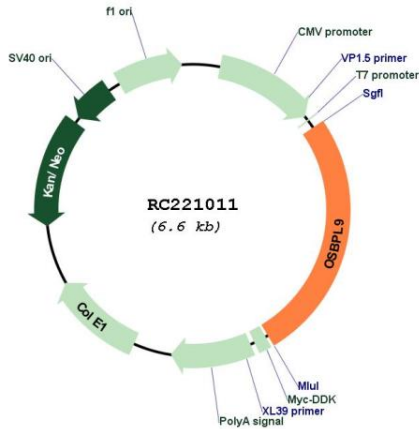
UniProt ID: [Q96SU4](#)

Cytogenetics: 1p32.3

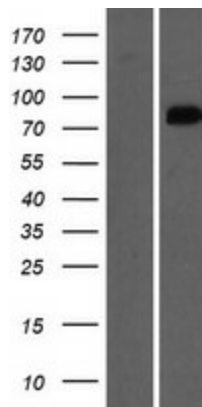
MW: 63.7 kDa

Gene Summary: This gene encodes a member of the oxysterol-binding protein (OSBP) family, a group of intracellular lipid receptors. Most members contain an N-terminal pleckstrin homology domain and a highly conserved C-terminal OSBP-like sterol-binding domain, although some members contain only the sterol-binding domain. This family member functions as a cholesterol transfer protein that regulates Golgi structure and function. Multiple transcript variants, most of which encode distinct isoforms, have been identified. Related pseudogenes have been identified on chromosomes 3, 11 and 12. [provided by RefSeq, Jul 2010]

Product images:



Circular map for RC221011



Western blot validation of overexpression lysate (Cat# [LY407762]) using anti-DDK antibody (Cat# [TA50011-100]). Left: Cell lysates from untransfected HEK293T cells; Right: Cell lysates from HEK293T cells transfected with RC221011 using transfection reagent MegaTran 2.0 (Cat# [TT210002]).